



Yobe State Cholera Outbreak Situation Report

No. 45: 4th November 2018

Yobe State Ministry of Health

Highlights:

- 3 new cases were reported on 4th November 2018 from 2 LGA (Gulani and Damaturu)
- 03 additional samples were collected and tested using RDT. All the 03 samples were positive
- 0 death was reported.

Epidemiological Summary:

The total number of suspected cholera cases reported in Yobe state is 1,744 with 61 associated deaths (CFR 3.50%). In the state, 569 cases have been reported in Gulani LGA, 485 cases in Gujba LGA and 442 cases in Damaturu LGA. In Fune LGA, 181 cases were reported and 67 cases were reported in Potiskum LGA.

Out of 97 samples collected and tested using cholera RDTs, 82 (84.5%) were positive and 15 (15%) were negative. Again, 9 (47%) out of 19 samples cultured were positive for *Vibrio Cholerae*. However, the 9 positive samples were taken to national reference laboratory for quality checks and further analysis samples and *Vibrio Cholerae* O1 (Inaba) serotype was isolated in 4 out of the 9 samples.

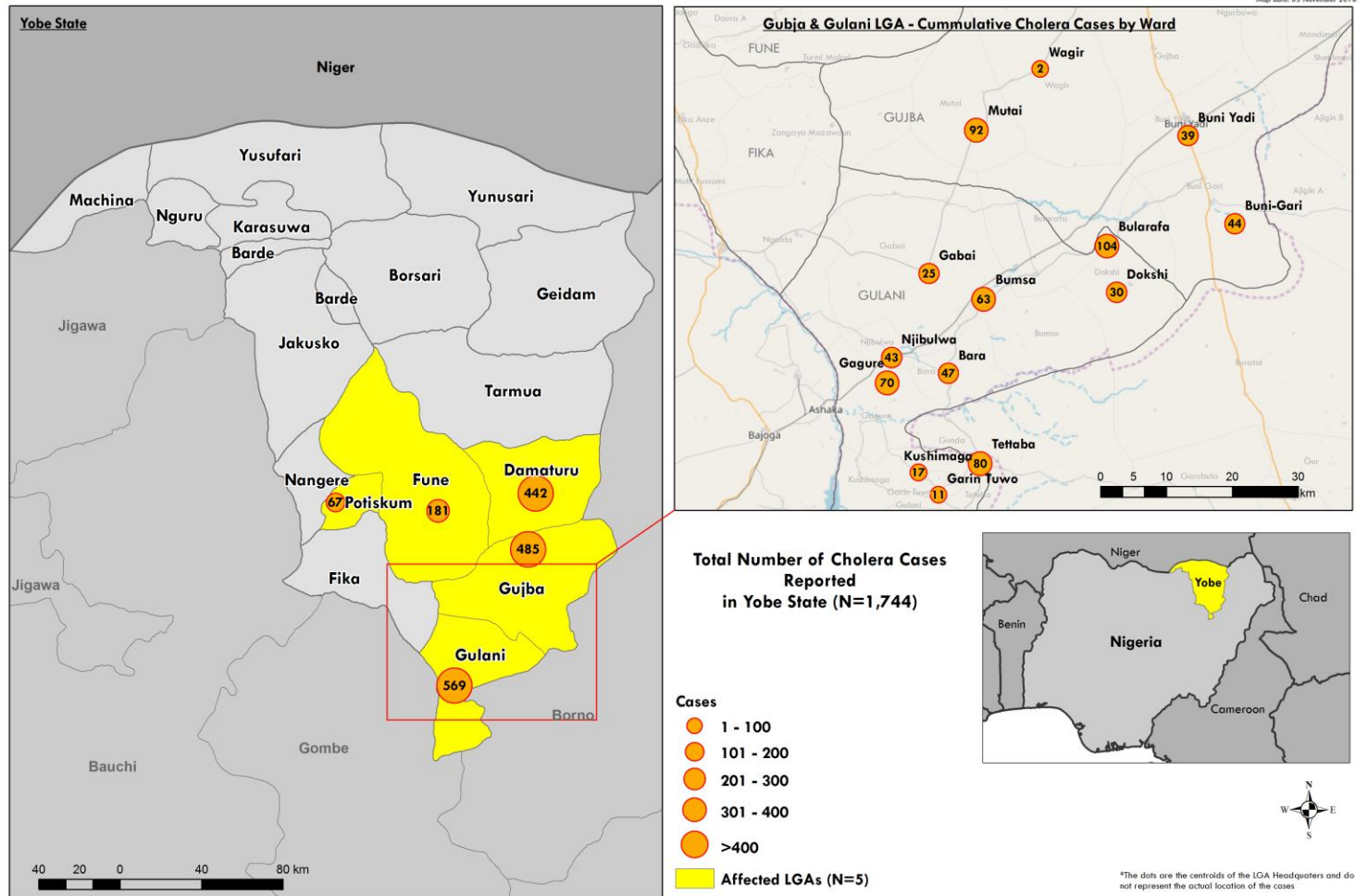
Table 1: Summaries of suspected cholera cases in Yobe State from July to 4th November 018.

	Gulani	Gujba	Damaturu	Fune	Potiskum	Total
Cases						
New suspected cholera cases	2	0	1	0	0	3
Cumulative suspected cholera cases	569	485	442	181	67	1744
Number of wards in the LGA	12	10	11	13	10	56
Number of wards affected	10	8	11	9	10	48
Deaths						
New deaths	0	0	0	0	0	0
Cumulative deaths	20	19	6	12	4	61
Laboratory						
Number of specimen tested (RDT)	26	13	46	12	0	97
Specimen Positive RDT	23	12	38	9	0	82
Pending result for RDT	0	0	0	0	0	0
Number of samples cultured	5	8	5	1	0	19
Specimen Positive Culture	2	4	2	1	0	9
Pending result for Culture	0	0	0	0	0	0

3 new suspected cholera cases reported in Yobe state on 4th November 2018, showing more than 50% decrease in the number of cases reported compared to that of the previous day (Fig. 2). 2 cases were reported from Gulani (Fig 4) and 1 case was reported from Damaturu (Fig 10). No case was reported from Gujba (Fig 6). Also no case was reported from Fune (Fig 8) in over 2 weeks while Potiskum has not reported any case in 6 weeks (Fig. 12).



Yobe State, Nigeria - Number of Cholera Cases Reported from 22nd August to 4th November 2018



Data source:
Yobe State Ministry of Health
World Health Organization, OpenStreetMap

World Health Organization (WHO)
Map production: WHO Health Emergencies Programme

The boundaries and names shown and the designations used on this map do not imply the expression of any opinion whatsoever on the part of the World Health Organization concerning the legal status

Figure 1: Map of Yobe State showing number of suspected cholera cases in affected wards and LGAs

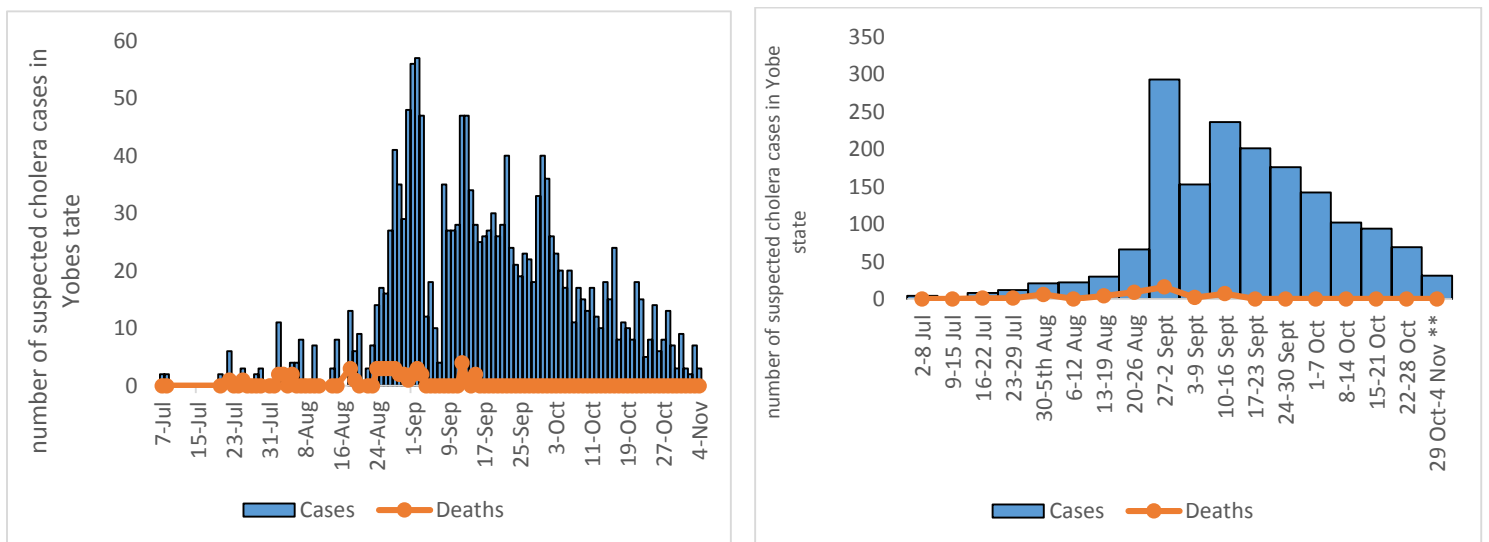


Figure 2: Epi-curve of suspected cholera cases in Yobe state.

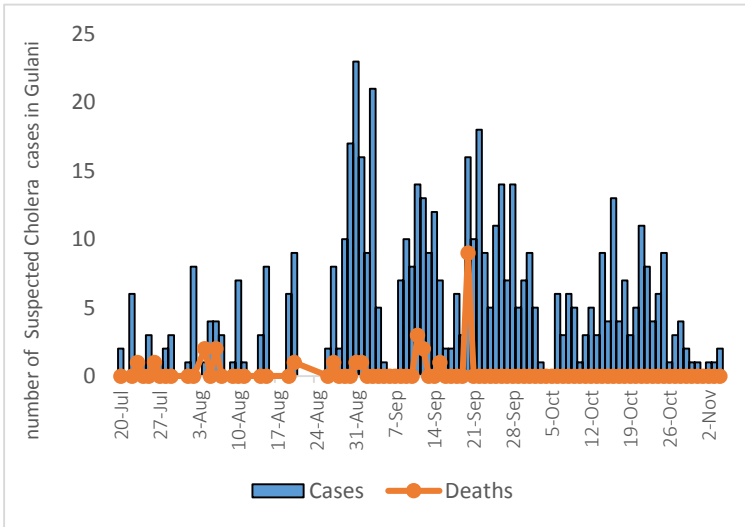


Figure 3: Epi-curve of suspected cholera cases in Yobe state.

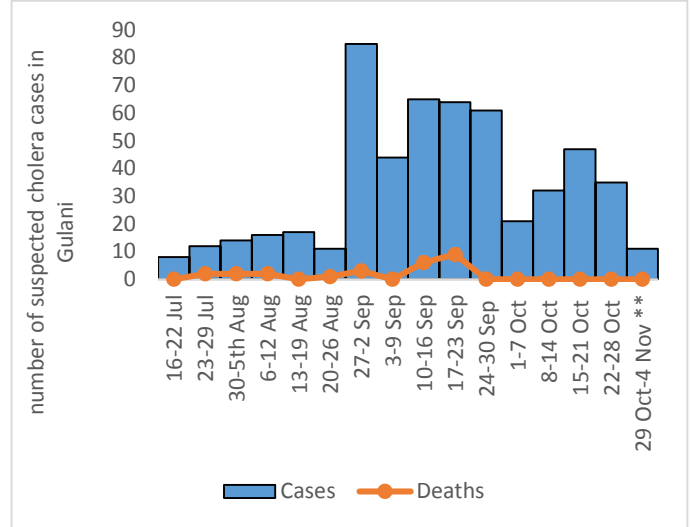


Figure 4: Epi-curve of suspected cholera cases in Gulani LGA.

Figure 5: Weekly Epi-curve of suspected cholera cases in Gulani LGA.

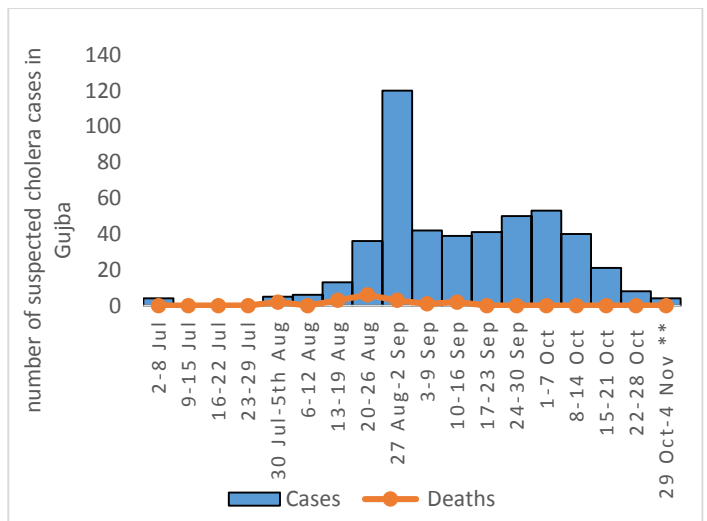
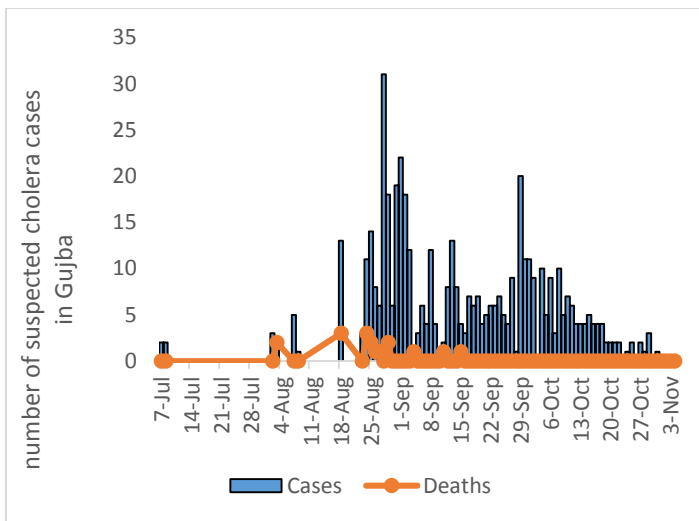


Figure 6: Epi-curve of suspected cholera cases in Gujba LGA.

Figure 7: Weekly Epi-curve of suspected cholera cases in Gujba LGA.

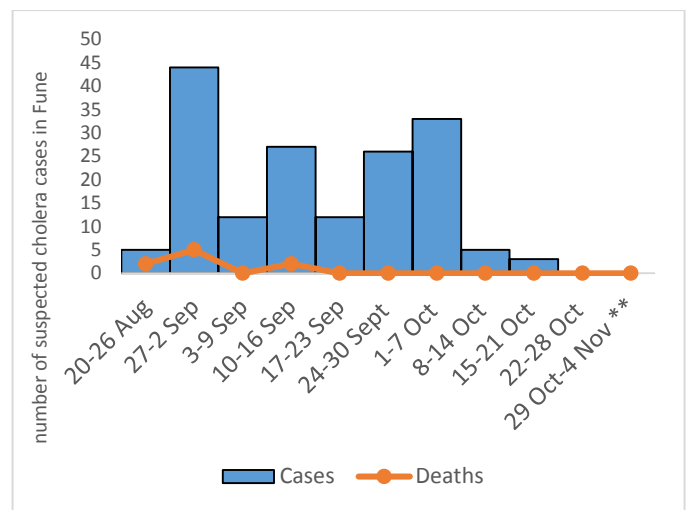
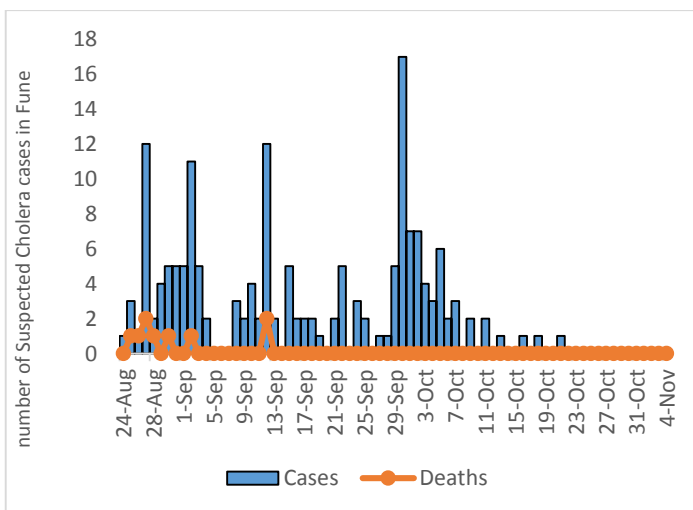


Figure 8: Epi-curve of suspected cholera cases in Fune LGA.

Figure 9: Weekly Epi-curve of suspected cholera cases in Fune LGA

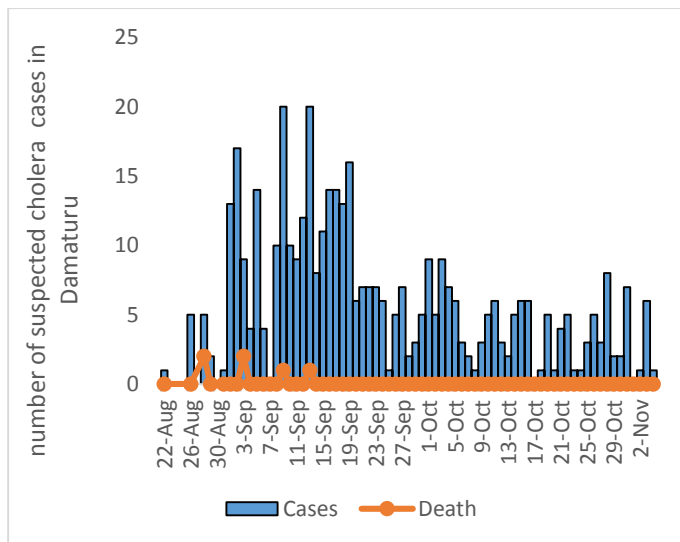


Figure 10: Epi-curve of suspected cholera cases in Damaturu LGA.

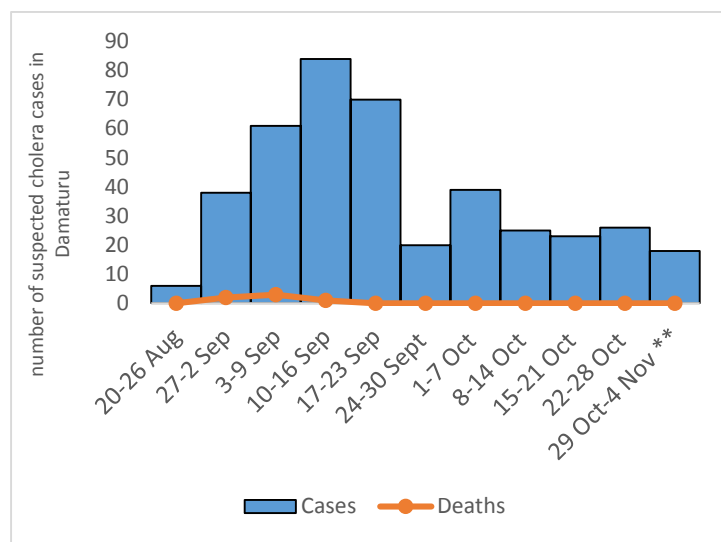


Figure 11: Weekly Epi-curve of suspected cholera cases in Damaturu LGA

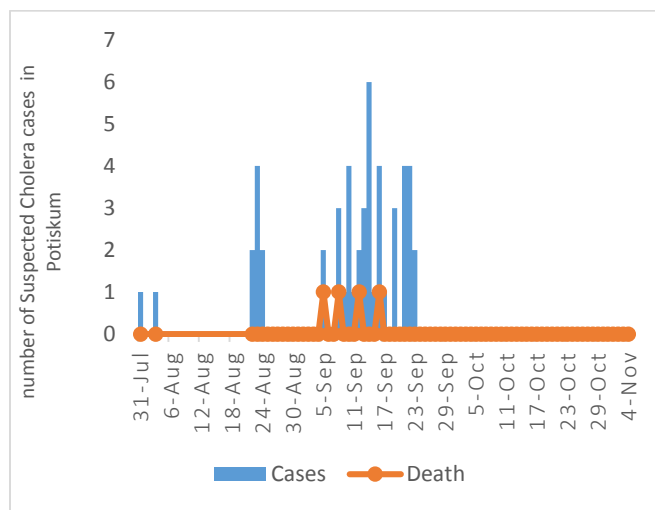


Figure 12: Epi-curve of suspected cholera cases in Potiskum.

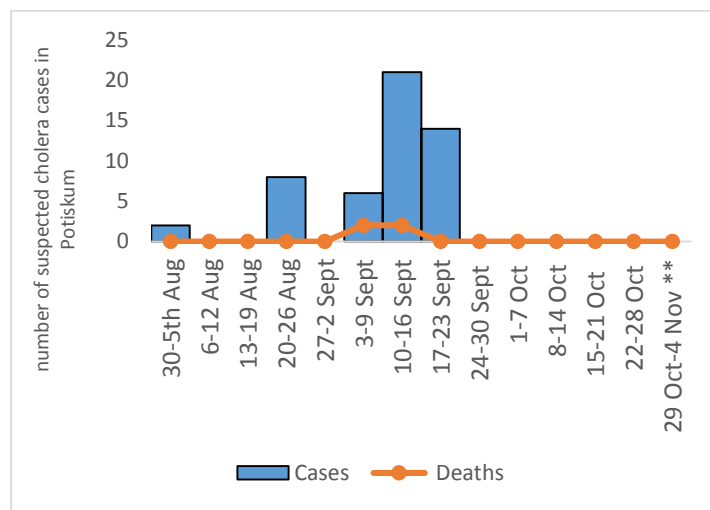


Figure 13: Weekly Epi-curve of suspected cholera cases in Potiskum.

Response Activities

Surveillance:

- Continues line listing of all suspected cholera cases within the city and neighboring communities.
- Continues retroactive case search in communities and health facilities using, MSF-Volunteers, EHA, HTR and LGA RRT team in Gulani, Gujba, Fune and Damaturu.
- Conducted investigation of new suspected cases from 2 LGAs (Damaturu and Gulani)
- WHO supported EHAs and MFS volunteers conducted house-house active case search in Gujba, Gulani, Fune, Potiskum and Damaturu reaching up to 420 households, no suspected cholera case was identified.
- Priority areas have been identified and communicated to WASH and risk communication teams to scale-up interventions.

Case Management:

	Gulani	Gujba	Damaturu	Fune	Potiskum	Total
Admissions						
New admissions	2	0	1	0	0	3
New Discharges	2	0	5	0	0	7
On admission	0	0	2	0	0	2

- No suspected cholera case was reported in Potiskum LGA since 24th September 2018.
- Two additional samples were collected and tested using RDT, two from Gulani and one in Damaturu LGA.
- No mortality was reported in all affected LGAs.

Risk Communication:

- Continues sensitization of Islamiyya and Tsangaya school is ongoing in Galani, Gujba and Damaturu.
- Airing of radio jingles by Yobe Radio Broadcasting Corporation has continued across the state.
- WHO and UNICEF field volunteers distributed 678 sachets of Aqua-tabs in Gulani, Damaturu and Gujba LGAs
- WHO HTR teams, CORPs, AAH, MSF, ICRC, Rescue and UNICEF supported volunteers continue to sensitized peoples on hygiene promotion and health education on hand washing, water purification and dangers on open defecation reaching up to 607 households in Damaturu, Gujba, Fune and Gulani LGAs.

WASH:

- UNICEF, AHH, MWR and RUWASA continues response activities in affected location through bucket-to bucket chlorination, clearing of drainages & refuges, and disinfection of households.
- Wash Teams and WHO supported volunteers have disinfected 18 households in Gulani and Damaturu.

Coordination:

- LGA RRTs in Gujba, Gulani, Damaturu and Fune LGA conducted daily local coordination meetings, and provided updates to state RRT to mobilize additional resources and technical supports

Daily coordination meetings were consistently being chaired by SMOH at the state level to ensure robust and effective response activities

