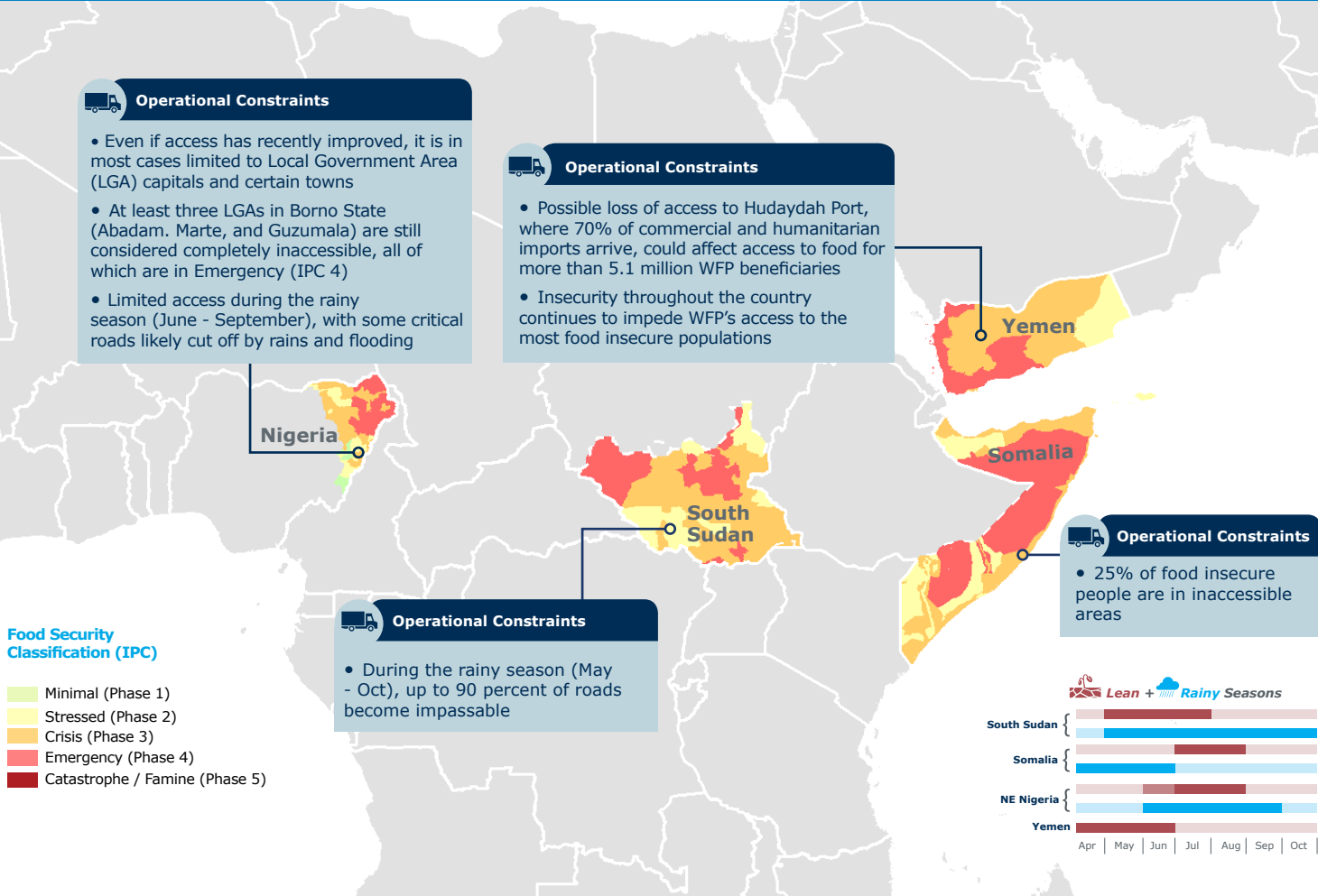


Fighting Famine Dashboard

26 June 2017



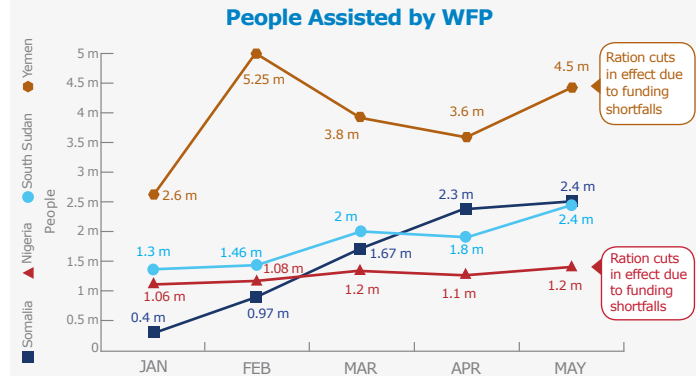
Overview:

- 20m people at risk of Famine**
ten million more could join them without immediate action
- 1.4m children are severely malnourished**
600,000 of which are at immediate risk of death in the coming months
- US\$1.2bn needed by WFP for the next six months**
2.8bn total 2017 requirement
- 10.5m people assisted by WFP in May**
Up from 5.4m people assisted in January

Scaling up to prevent and respond to Famine requires:

- Sustained funding**
- Humanitarian access**
- An integrated response** with all partners

WFP Scale-up



WFP Net Funding Requirements as of 23 June 2017 for the next six months (July - December)

NORTH-EAST NIGERIA US\$191m	YEMEN US\$442m
SOUTH SUDAN US\$157m	SOMALIA US\$366m

What is Famine?

- Food shortages:**
>20% of population has extreme food gap
 - Global Acute Malnutrition (GAM):**
>30% or more in children under 5
 - Increased mortality:**
>2 deaths/10,000 adults/day or >4 deaths/10,000 children/day
- (Source: IPC Technical Manual Version 2.0)

45,000 people in Famine-like conditions (IPC 5)

SOUTH SUDAN

6m people need food assistance (IPC 3,4,5)*

1.7m in Emergency (IPC 4)

274,000 severely malnourished children (SAM)

*IPC June 2017

50,000 people in Famine-like conditions (IPC 5)

NORTH-EAST NIGERIA

5.2m people need food assistance (IPC 3,4,5)*

1.4m in Emergency (IPC 4)

450,000 severely malnourished children (SAM)

*Cadre Harmonise March 2017

YEMEN

17m people need food assistance (IPC 3, 4)*

6.8m in Emergency (IPC 4)

395,000 severely malnourished children (SAM)

*IPC March 2017

SOMALIA

3.2m people need food assistance (IPC 3,4)*

0.7m in Emergency (IPC 4)

275,000 severely malnourished children (SAM)

*IPC May 2017