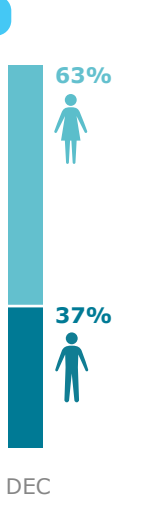
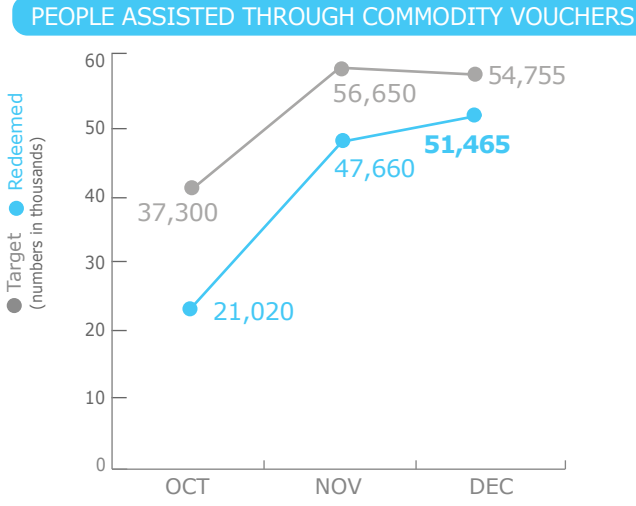
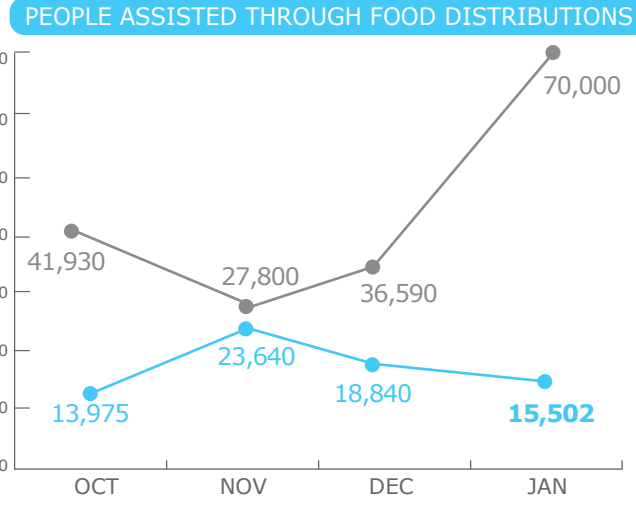


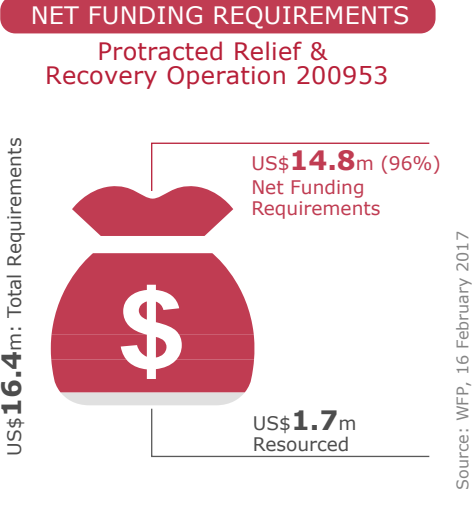
### PEOPLE ASSISTED

Emergency Operation 200765\*



### FUNDING

Feb - July 2017

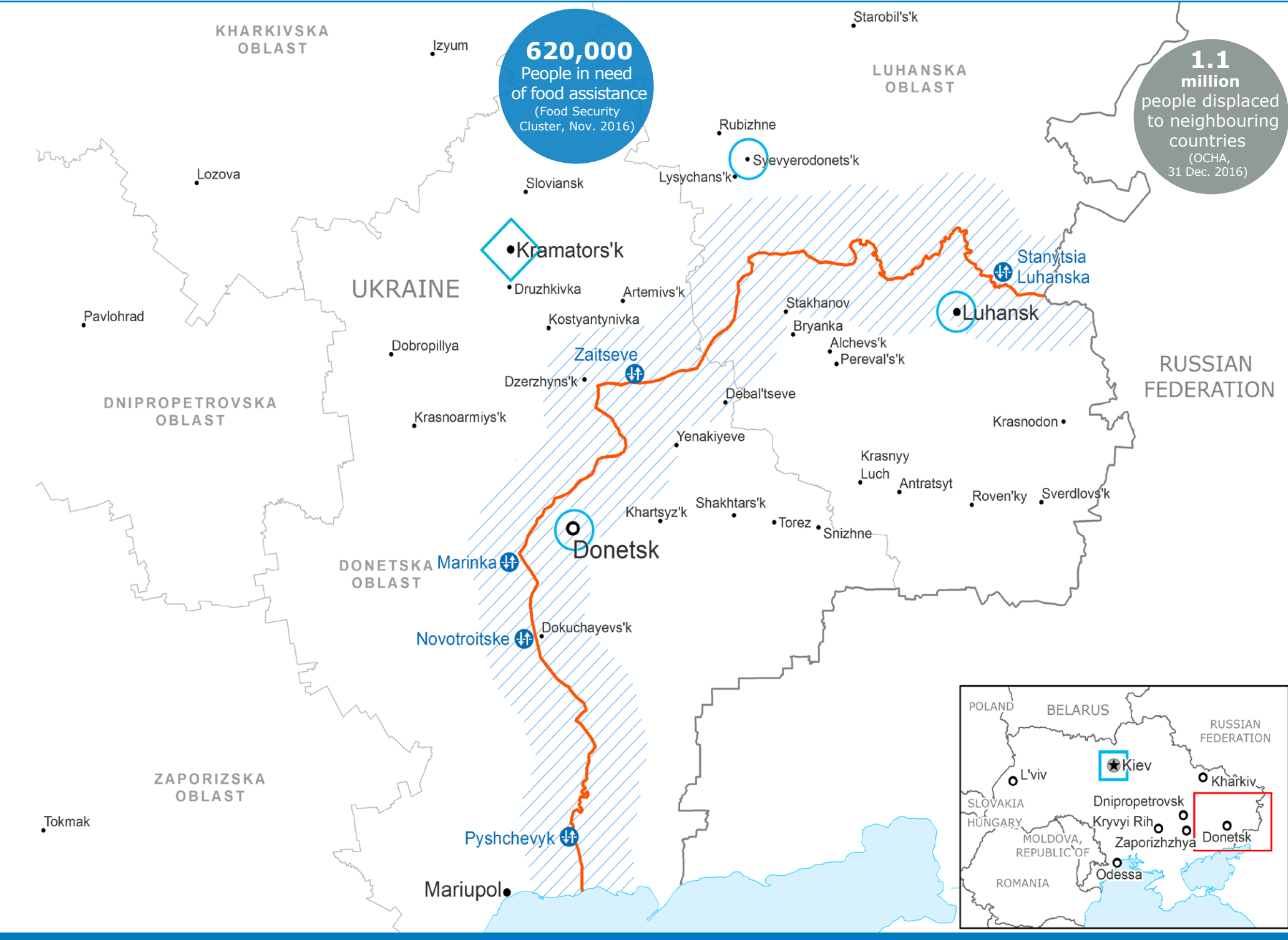


\*In January 2017, WFP Ukraine distributed stock transferred from EMOP as winterization measure, while new FLAs for PRRO 2017 are being prepared.

\*WFP finalized all CBT distributions under EMOP in December 2016, providing two rounds of assistance, covering December and January. New FLAs for PRRO 2017 are being prepared.

Source: WFP, 16 February 2017

Source: WFP, 16 February 2017



### OPERATIONAL CHALLENGES

- Insecurity
- Humanitarian Access
- Resources
- Economic Volatility

### WFP LED & CO-LED CLUSTERS

Cluster	2017 Requirements	Number of Partners Served (January)	Organizations Supported
Food Security and Livelihoods Cluster	US\$65.2m	53	41 (NOV), 41 (DEC), 41 (JAN)
Logistics Cluster	US\$1.5m	-	-

Source: HRP, 05 December 2016; WFP 09 February 2017

### WFP LEVEL 2 EMERGENCY

SINCE 26 NOVEMBER 2014

For more information, see the **SITUATION REPORT** and **COUNTRY BRIEF** [www.wfp.org/countries/ukraine](http://www.wfp.org/countries/ukraine)

Produced by the WFP **Operations Centre (OPSCEN)** jointly with Country Office and Regional Bureau Cairo

This dashboard is based on best available information at the time of production. Future updates may vary as new information becomes available.

- Country Office
- Area Office
- Sub Office
- Contact Line
- Area along the contact line
- Crossing Point
- National Capital
- Major Town
- Intermediate Town
- Small Town
- International Boundary
- Oblast Boundary

Sources: WFP, UNGIWG, GAUL, OCHA, GLSCS  
The designations employed and the presentation of material in the map(s) do not imply the expression of any opinion on the part of WFP concerning the legal or constitutional status of any country, territory, city or sea, or concerning the delimitation of its frontiers or boundaries.  
© World Food Programme 2017