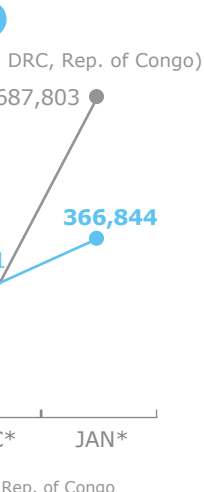
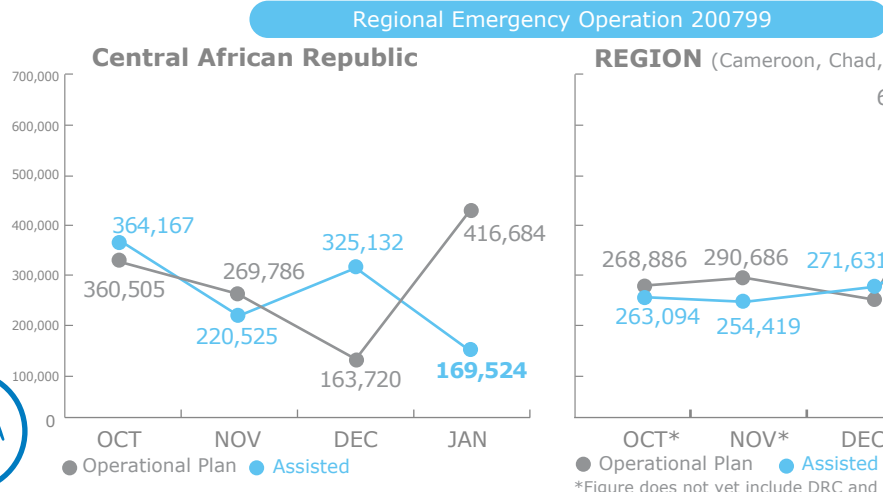
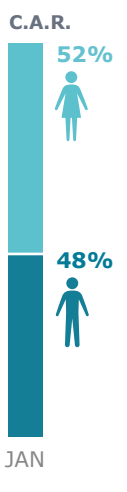
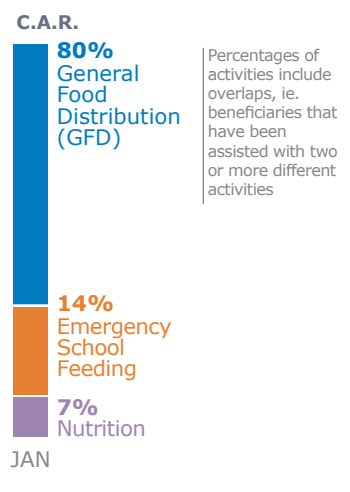




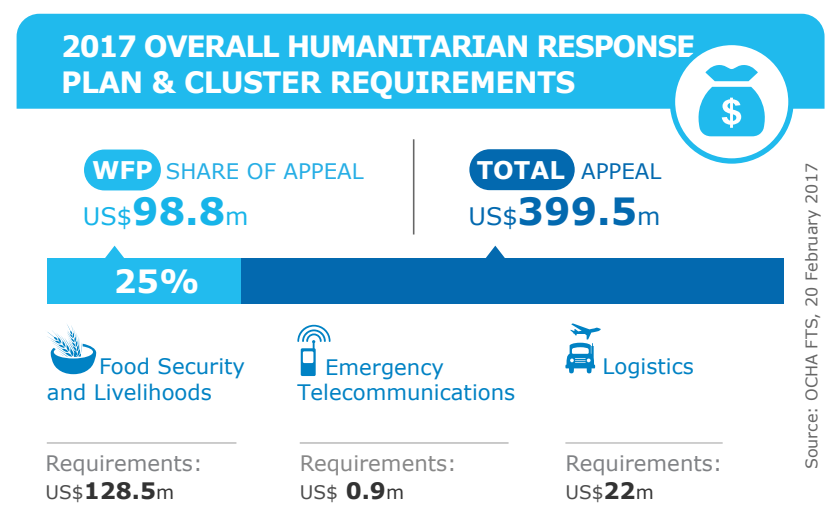
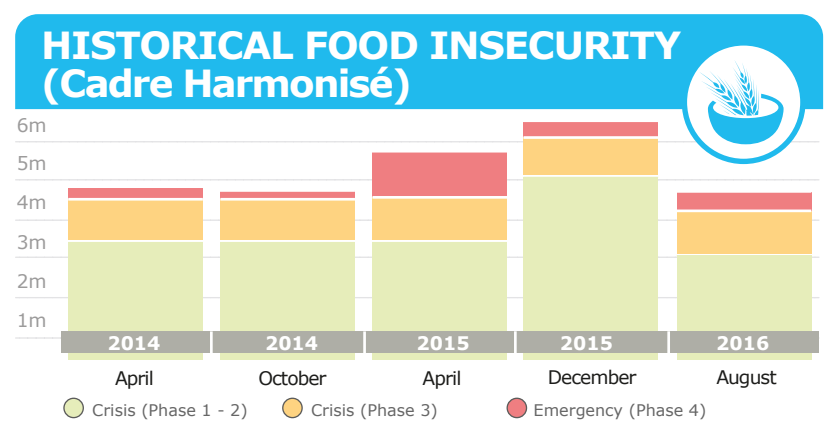
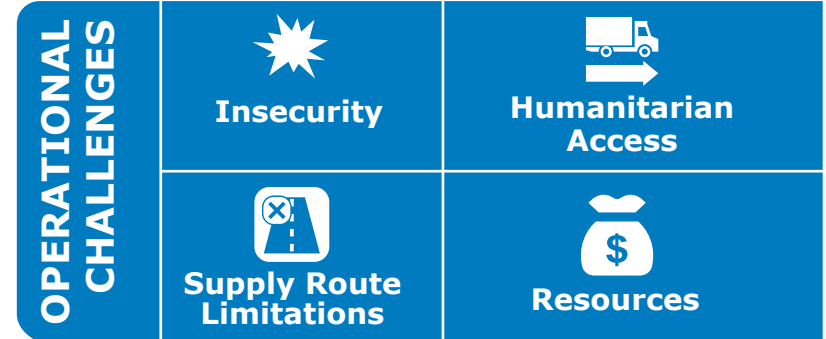
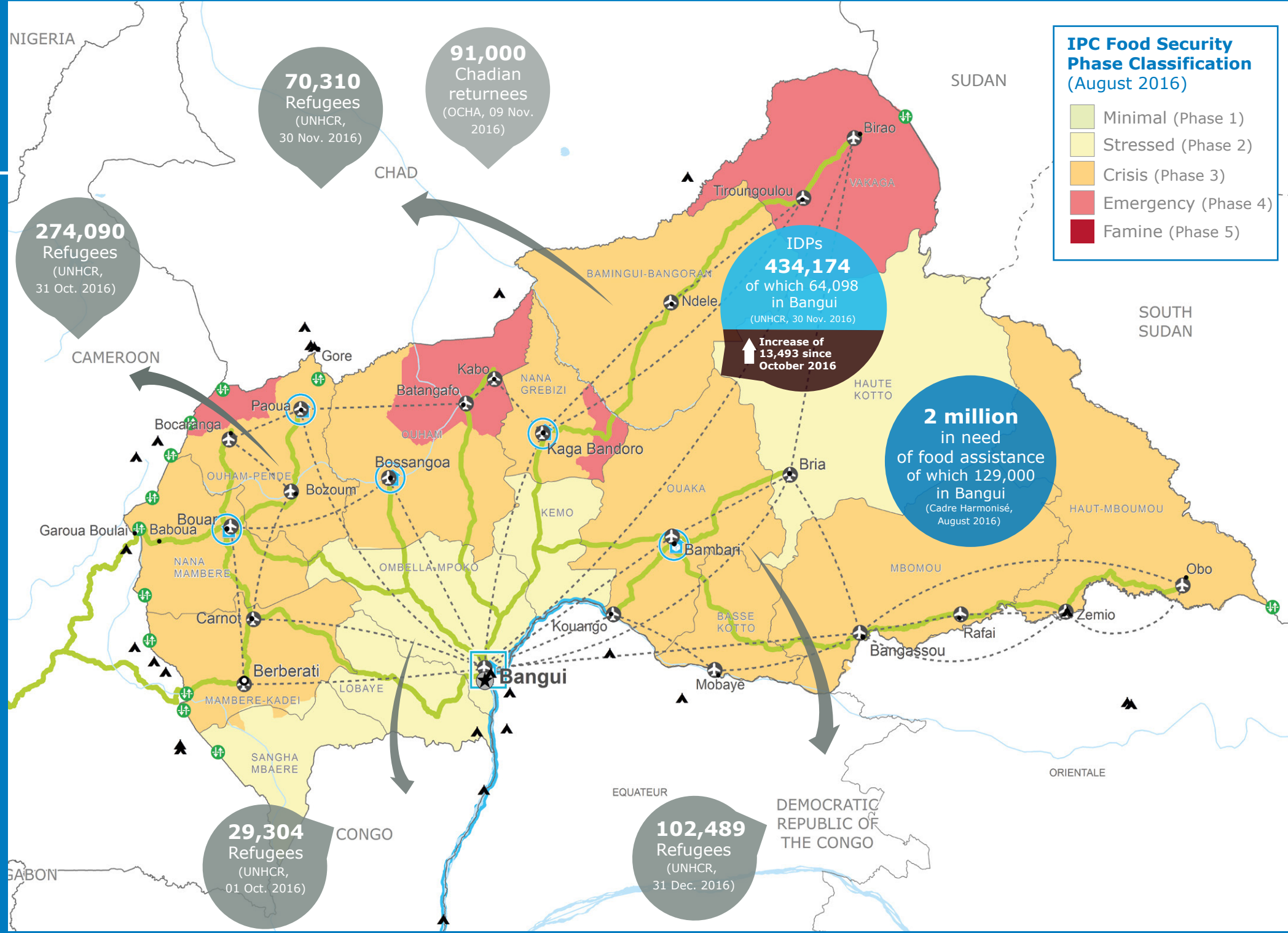
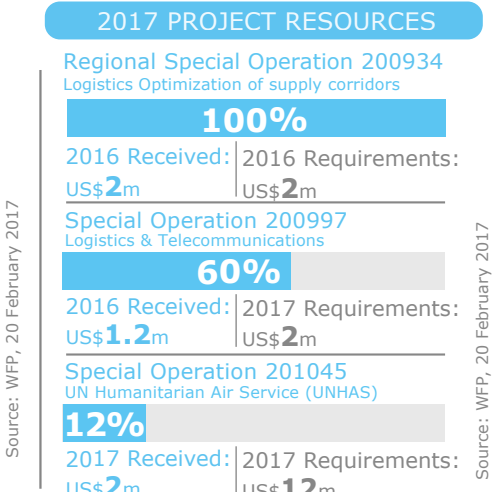
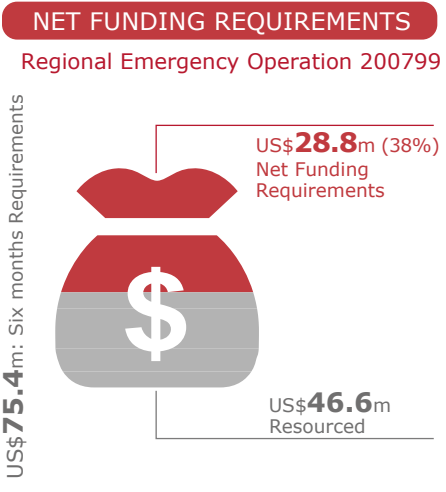
**PEOPLE ASSISTED**



**OPERATIONAL PROFILE**



**FUNDING**  
Feb - Jul 2017



**WFP LEVEL 2 EMERGENCY**  
SINCE 02 JUNE 2015

For more information, see the **SITUATION REPORT** and **COUNTRY BRIEF** [www.wfp.org/countries/central-african-republic](http://www.wfp.org/countries/central-african-republic)

**2A** Regional Emergency Operation 200799  
<http://documents.wfp.org/stellent/groups/public/documents/ep/WFP284303.pdf>

Produced by the WFP **Operations Centre (OPSCEN)** jointly with Country Office and Regional Bureau Dakar

This dashboard is based on best available information at the time of production. Future updates may vary as new information becomes available.

- Country Office
- Warehouse
- UNHAS Connection
- National Capital
- International Boundary
- Sub Office
- Refugee Camp
- UNHAS Route
- Major Town
- Province boundary
- Field Office
- Road Supply Route
- Border Crossing Point
- Intermediate Town
- River
- Waterway Supply Route
- Small town
- Surface Waterbody

Sources: WFP, UNGIWG, GAUL, GLCSC, OCHA, UNHCR  
The designations employed and the presentation of material in the map(s) do not imply the expression of any opinion on the part of WFP concerning the legal or constitutional status of any country, territory, city or sea, or concerning the delimitation of its frontiers or boundaries. © World Food Programme 2017

Source: WFP, 20 February 2017

Source: OCHA FTS, 20 February 2017