



ព្រឹត្តិបត្រថ្លៃអាហារ និងប្រាក់ឈ្នួលពលកម្មនៅកម្ពុជា

CAMBODIA FOOD PRICE AND WAGE BULLETIN



Agricultural Marketing
Office, DPS, MAFF

March 2015, Issue 71



HIGHLIGHTS

- Food purchasing power of households decreased by 0.5% and 2.8% in rural and urban areas respectively month-on-month;
- Retail price of lowest quality rice decreased by 1.3% in rural areas and increased by 1% in urban areas on a month-on-month basis;
- Wholesale price of mixed rice decreased by 0.6% month-on-month and 9% year-on-year;
- In February, inflation rate was 1.5% and overall food prices increased by 5% year-on-year;
- Thai A1 Super white rice decreased by 0.3% and Vietnamese white rice increased 3.3% month-on-month and
- International Food Price Index decreased by 3.1% on a month-on-month basis.

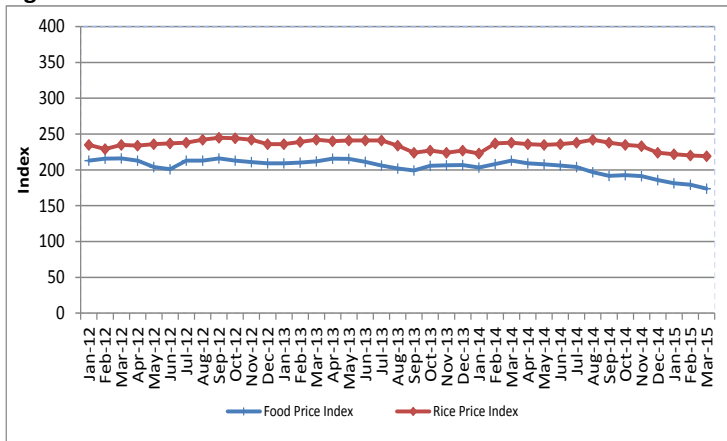
Overview

This Bulletin is a joint publication¹ by the Agricultural Marketing Office (Department of Planning and Statistics) of the Ministry of Agriculture, Forestry and Fisheries (AMO MAFF) and the United Nations World Food Programme (WFP). It monitors the price of food commodities as well as wage rates for unskilled labor on a monthly basis. It also aims to detect changes and identify trends in the food purchasing power of vulnerable households.

International Food and Rice Prices

The FAO Food Price Index² measures the international price level of a basket of key food commodities. The index averaged 173.8 points in March 2015, a decrease of 3.1% on a month-on-month basis due to mainly a decline in prices of sugar. The International Rice Price Index averaged 219 points, a slight decrease of 0.5% on a month-on-month basis.

Figure 1: FAO Food Price Index and Rice Price Index



Source: <http://www.fao.org/worldfoodsituation/foodpricesindex/en/>

¹ This publication has been produced jointly since September 2011.

² The FAO Food Price Index consists of the average of commodity group price indices (i.e. meat, dairy, cereals, oils/fats, and sugar) weighted with the average export shares of each of the groups for 2002-2004.

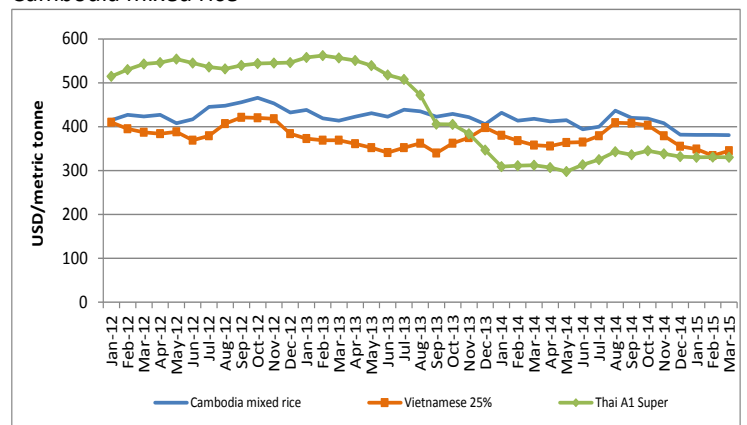
CONTENT

Overview.....	1
International Food and Rice Prices.....	1
Regional Rice Wholesale Prices.....	1
Cambodia Consumer Price Index (CPI).....	2
Local Food Commodity Prices.....	2
Price Monitoring and Forecasting.....	2
Unskilled Wage.....	3
Terms of Trade.....	3
Appendix 1: Sentinel Surveillance Market Sites.....	4
Appendix 2: Retail Price of Food Commodities by Market.....	5

Regional Rice Wholesale Prices

In March 2015, the f.o.b. export prices³ of Thai A1 Super white rice were 330 USD/mt and Vietnamese white rice (25% broken) were 345 USD/mt respectively (Figure 2).

Figure 2: Export price of Thai and Vietnamese white rice and Cambodia mixed rice⁴



Source: <http://www.fao.org/es/esc/prices/PricesServlet.jsp?lang=en>

³ Free on board (f.o.b.) price includes all charges up to the placing of goods on board a ship at the port of departure specified by the buyer.

⁴ Mixed rice is considered a low-quality type of rice. The price in US\$ per metric tonne above was converted from the price in Riel per Kg.

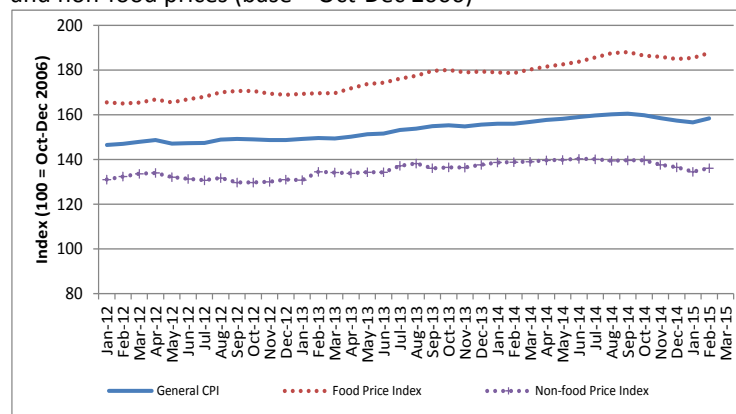
The price of Thai A1 Super white rice decreased 0.3% month-on-month and was 5.8% higher year-on-year. On the contrary, the price of Vietnamese white rice increased by 3.3% month-on-month, and decreased by 3.6% on a year-on-year basis. The estimated price of Cambodian mixed rice in March 2015 was 0.1% lower than that of the previous month (381.4 USD/mt).

Cambodia Consumer Price Index (CPI)

The general Consumer Price Index (CPI)⁵ measures the cost of a consumption basket composed of 259 items. Each item is weighted based on their importance in an average household's expenditure⁶.

In February⁷ 2015, the general CPI averaged 158.4 points, increased 1.1% month-on-month. The inflation rate, as measured by the year-on-year increase in the CPI, was 1.5%. Food Price Index (FPI) measures the cost of the food items (comprise 43.2%) in the general CPI's consumption basket, was 187.7 point in February 2015. The FPI increased by 1.2% month-on-month and increased by 5% on a year-on-year basis (Figure 3). Similarly, Non-food price index in February 2015 also increased by 1.2% month-on-month, but was 2% lower than the same period last year.

Figure 3: Relative change in general consumer prices, food prices and non-food prices (base = Oct-Dec 2006)

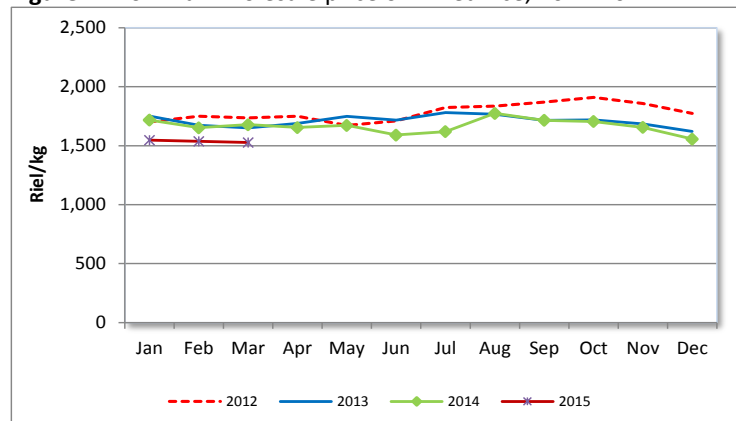


Source: National Institute of Statistics

Local Food Commodity Prices

Average wholesale price of mixed rice⁸ was 1,527 riel/kg in March 2015, a month-on-month decrease of 0.6%. In nominal terms, prices decreased by 9% on a year-on-year basis (Figure 4). In real terms, the wholesale price of mixed rice was 10.5% lower year-on-year.

Figure 4: Nominal wholesale price of mixed rice, 2012-2014



Source: AMO MAFF, <http://www.agriculturalmarketinformation.org.kh>

⁵ The CPI is collected and reported by the National Institute of Statistics (NIS).

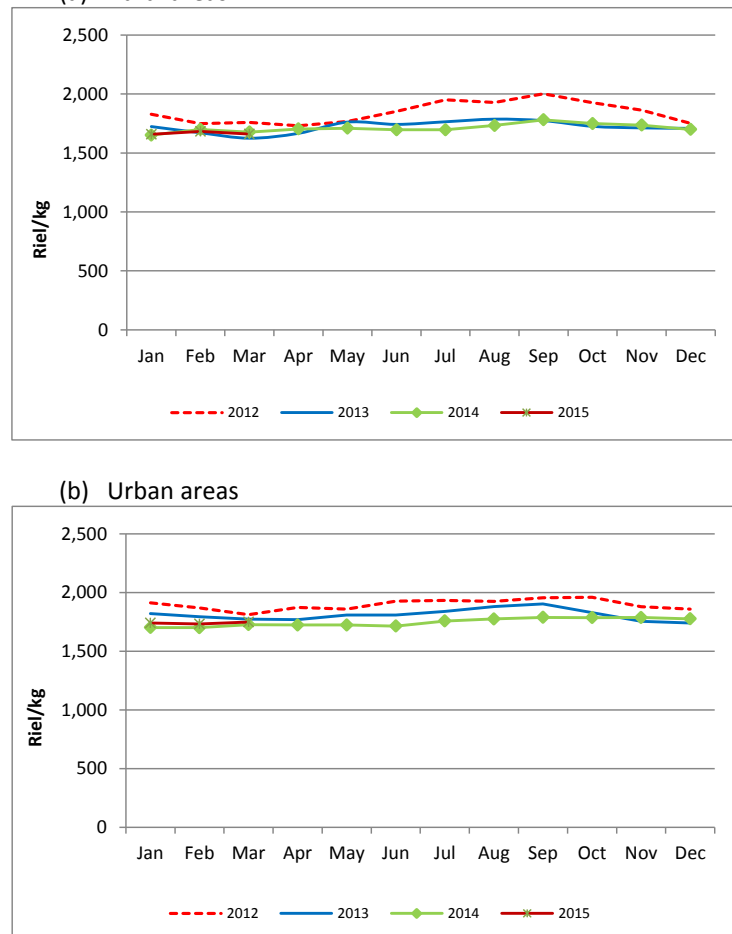
⁶ Relative item expenditure weights are derived from the 2004 Cambodia Socio-Economic Survey and adjusted to October-December 2006 price levels.

⁷ The March CPI data was not yet available at the time of producing this bulletin.

⁸ The wholesale price of mixed rice is collected and reported by the Agricultural Marketing Office of the Ministry of Agriculture, Forestry and Fisheries.

In March 2015, the average nominal retail price of the lowest quality rice⁹ in rural and urban areas was 1,661 riel/kg and 1,748 riel/kg, respectively. The prices decreased by 1.3% in rural areas, and increased by 1% in urban areas month-on-month (Figure 5).

Figure 5 (a) (b): Nominal retail price of lowest quality rice, 2012-14



Source: WFP

On a year-on-year basis, in March 2015, nominal retail rice prices in rural areas decreased by 1%, while in urban areas the price increased 1.3%. In real terms, the retail price of rice in rural areas decreased by 2.5% and in urban areas decreased by 0.2%.

Retail prices of other food commodities (i.e. second quality rice, vegetable oil, smoked fish, fresh fish, pork, and duck eggs) in each of the 10 rural and 11 urban markets are presented in Appendix 2.

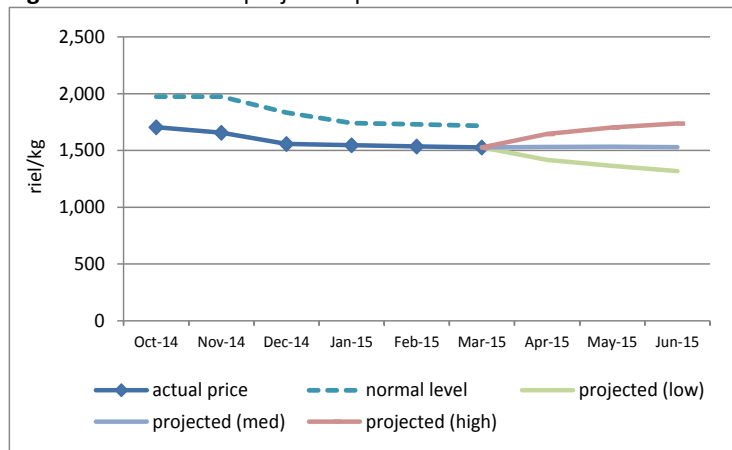
Price Monitoring and Forecasting

FAO's price monitoring tool compares recent actual wholesale prices from AMO MAFF with "normal" price levels. The normal price level takes into account historical price levels and adjusts for inflation and seasonal factors. A discrepancy between current actual prices and "normal" prices indicates that current prices are higher or lower than what would be expected. In March 2015, the actual wholesale price of mixed rice was 1,527 riel/kg, 11% lower than the expected its normal historical price.

Prices for the next three months were also projected, based on the current price, current inflation rate and seasonal factors. The high and low bands are also set so that actual prices will fall within the range 80% of the time. The prices for the next three months were projected to increase slightly to around 1,535 riel/kg (Figure 6).

⁹ Mixed rice, IR rice and Banla Pdao rice

Figure 6: Normal and projected prices of wholesale rice

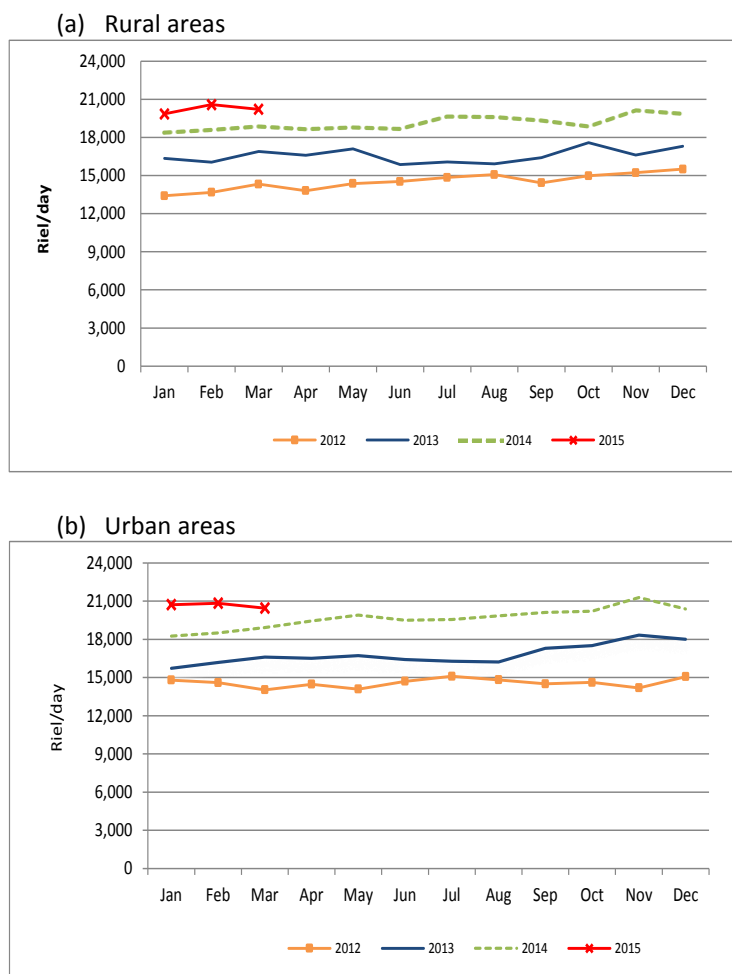


Source: AMO, WFP, FAO

Unskilled Wage

Daily wages of unskilled workers engaged in rice and non-rice farming and construction work are monitored by WFP on a monthly basis. In March 2015, the average wage of unskilled labor in rural and urban areas was 20,208 riel/day and 20,450 riel/day, respectively. On a month-on-month basis, the wage rate decreased by 1.8% in both the rural and urban areas (Figure 7).

Figure 7(a) (b): Daily wage of unskilled labor



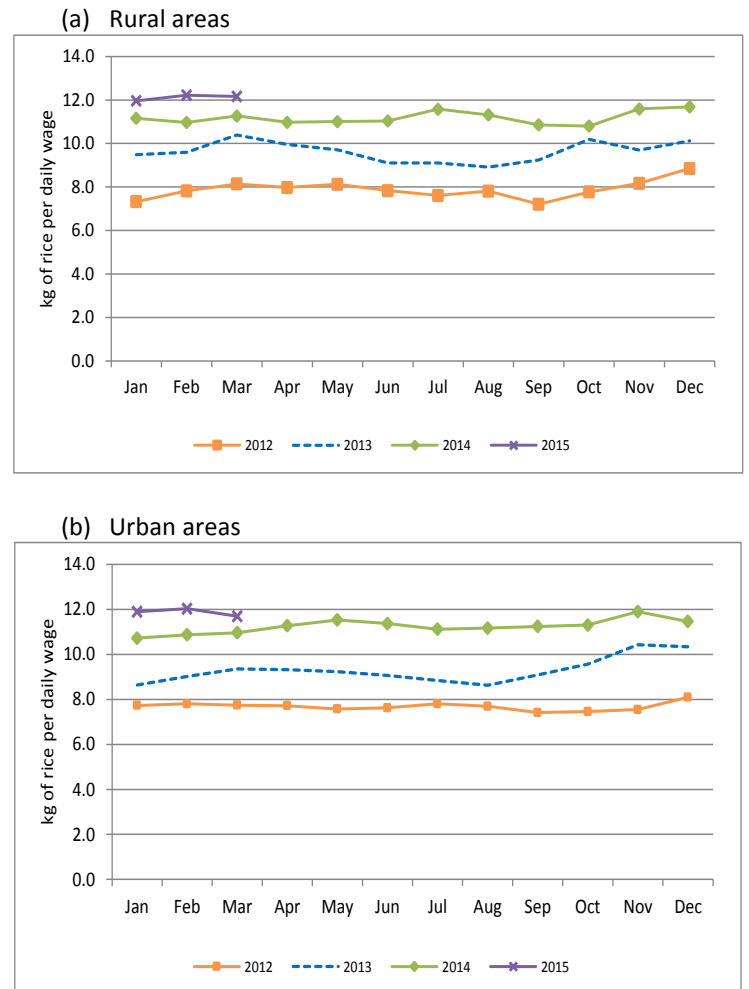
Source: WFP Cambodia

Terms of Trade

Terms of trade (ToT) is used to assess household purchasing power by taking the ratio of two different components, namely the daily wage rates of unskilled laborers and the retail price of lowest quality rice in the market. This gives an indication of the amount of rice that an unskilled wage laborer can purchase with a daily wage.

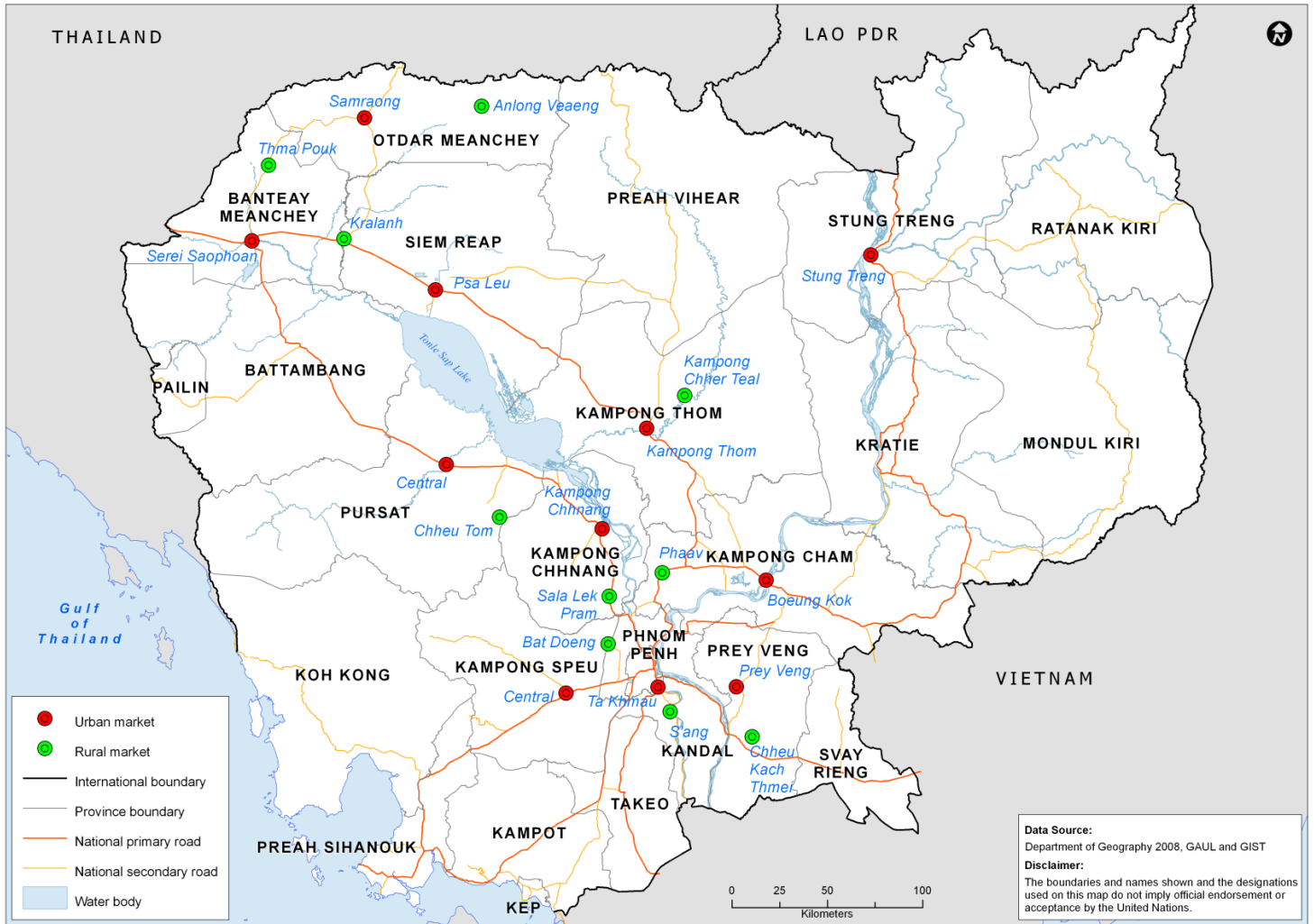
In March 2015, the ToT was 12.2 kg/day and 11.7 kg/day in rural and urban areas, respectively. The ToT in rural areas decreased slightly by 0.5% and in urban areas decreased by 2.8% month-on-month (Figure 8). The decrease in ToT in urban areas was due to a decrease in unskilled wage rate and an increase in price of rice in urban areas (Figure 8).

Figure 8(a) (b): Terms of Trade of unskilled labor and rice



WFP Cambodia

Appendix 1: Location of sentinel market sites in urban and rural areas in Cambodia



Contacts

Agricultural Marketing Office

Department of Planning and Statistics, Ministry of Agriculture, Forestry and Fisheries
 Mr. Meach Yady: meachyady@gmail.com
<http://www.agriculturalmarketinformation.org.kh>

United Nations World Food Programme

Vulnerability Analysis and Mapping (VAM) Unit
 Mr. Jonathan Rivers: jonathan.rivers@wfp.org
 Mr. Yav Long: Yav.Long@wfp.org
 Mr. Chanvibol Choer: Chanvibol.Choeur@wfp.org
<http://www.wfp.org/countries/cambodia>

Appendix 2(a) (b): Retail price of food commodities by market

(a) Rural markets

Food Item	Province	Market	price (Riel/kg)	price change (%)			direction of change		
				1 month	3 months	1 year	1 month	3 months	1 year
Second quality rice	Banteay Meanchey	Thma Puok	-	-	-	-	-	-	-
	Kampong Cham	Pha'av	1,767	-1.9	-	3.9	↔	-	↔
	Kampong Chhnang	Sala Lek Pram	2,000	0.0	0.0	9.1	↔	↔	↔
	Kampong Speu	Bat Doeng	-	-	-	-	-	-	-
	Kampong Thum	Kampong Chheuteal	1,767	-0.9	-1.9	3.9	↔	↔	↔
	Kandal	S'ang	1,967	3.5	1.7	9.3	↔	↔	↔
	Oddar Meanchey	Anlong Veng	2,200	0.0	0.0	0.0	↔	↔	↔
	Prey Veng	Chheu Kach Thmei	-	-	-	-	-	-	-
	Pursat	Chheu Tom	1,800	0.0	-	-	↔	-	-
	Siem Reap	Kralanh	-	-	-	-	-	-	-
	Stung Treng	n/a	-	-	-	-	-	-	-
Svay Rieng	Kampong Trach	-	-	-	-	-	-	-	
Lowest quality rice	Banteay Meanchey	Thma Puok	2,000	0.0	0.0	11.1	↔	↔	↔
	Kampong Cham	Pha'av	1,500	-3.2	-6.3	7.1	↔	↔	↔
	Kampong Chhnang	Sala Lek Pram	1,700	-8.1	-10.5	-3.8	↔	↔	↔
	Kampong Speu	Bat Doeng	1,800	0.0	-1.8	-10.0	↔	↔	↔
	Kampong Thum	Kampong Chheuteal	-	-	-	-	-	-	-
	Kandal	S'ang	1,767	1.9	1.9	10.4	↔	↔	↔
	Oddar Meanchey	Anlong Veng	1,600	4.3	-2.0	-2.0	↔	↔	↔
	Prey Veng	Chheu Kach Thmei	1,500	0.0	7.1	0.0	↔	↔	↔
	Pursat	Chheu Tom	1,650	10.0	3.1	1.0	↔	↔	↔
	Siem Reap	Kralanh	1,433	-	-15.7	-18.9	-	↔	↔
	Stung Treng	n/a	-	-	-	-	-	-	-
Svay Rieng	Kampong Trach	-	-	-	-	-	-	-	
Vegetable oil	Banteay Meanchey	Thma Puok	6,000	0.0	9.1	-6.4	↔	↔	↔
	Kampong Cham	Pha'av	4,767	2.9	5.9	-5.9	↔	↔	↔
	Kampong Chhnang	Sala Lek Pram	4,667	0.0	-6.7	-15.2	↔	↔	↔
	Kampong Speu	Bat Doeng	4,667	0.0	-6.7	-8.5	↔	↔	↔
	Kampong Thum	Kampong Chheuteal	4,667	-4.1	0.0	-15.2	↔	↔	↔
	Kandal	S'ang	4,300	1.6	-3.0	-18.7	↔	↔	↔
	Oddar Meanchey	Anlong Veng	4,550	3.4	-17.2	-29.0	↔	↔	↔
	Prey Veng	Chheu Kach Thmei	4,400	-5.0	-6.4	-12.0	↔	↔	↔
	Pursat	Chheu Tom	4,667	0.0	0.0	-15.7	↔	↔	↔
	Siem Reap	Kralanh	5,000	-11.8	0.0	-9.1	↔	↔	↔
	Stung Treng	n/a	-	-	-	-	-	-	-
Svay Rieng	Kampong Trach	-	-	-	-	-	-	-	
Smoked fish (Trei Riel)	Banteay Meanchey	Thma Puok	-	-	-	-	-	-	-
	Kampong Cham	Pha'av	20,000	-	-	9.0	-	-	↔
	Kampong Chhnang	Sala Lek Pram	-	-	-	-	-	-	-
	Kampong Speu	Bat Doeng	30,000	-	71.4	18.6	-	↔	↔
	Kampong Thum	Kampong Chheuteal	19,000	8.6	-26.9	5.6	↔	↔	↔
	Kandal	S'ang	-	-	-	-	-	-	-
	Oddar Meanchey	Anlong Veng	-	-	-	-	-	-	-
	Prey Veng	Chheu Kach Thmei	21,600	-	-	-	-	-	-
	Pursat	Chheu Tom	-	-	-	-	-	-	-
	Siem Reap	Kralanh	-	-	-	-	-	-	-
	Stung Treng	n/a	-	-	-	-	-	-	-
Svay Rieng	Kampong Trach	-	-	-	-	-	-	-	

Food Item	Province	Market	price (Riel/kg)	price change (%)			direction of change		
				1 month	3 months	1 year	1 month	3 months	1 year
Fresh fish (Trei Pra)	Banteay Meanchey	Thma Puok	-	-	-	-	-	-	-
	Kampong Cham	Pha'av	7,000	7.7	2.4	16.7	↔	↔	↔
	Kampong Chhnang	Sala Lek Pram	5,750	-4.2	-4.2	-11.5	↔	↔	↔
	Kampong Speu	Bat Doeng	6,000	0.0	0.0	0.0	↔	↔	↔
	Kampong Thum	Kampong Chheuteal	7,000	-3.4	0.0	-12.5	↔	↔	↔
	Kandal	S'ang	6,750	-	-	12.5	-	-	↔
	Oddar Meanchey	Anlong Veng	5,000	0.0	0.0	0.0	↔	↔	↔
	Prey Veng	Chheu Kach Thmei	7,000	0.0	0.0	50.0	↔	↔	↔
	Pursat	Chheu Tom	7,000	2.4	3.7	16.7	↔	↔	↔
	Siem Reap	Kralanh	5,000	-16.7	0.0	-3.2	↔	↔	↔
	Stung Treng	n/a	-	-	-	-	-	-	-
Svay Rieng	Kampong Trach	-	-	-	-	-	-	-	
Pork with fat (Sach Bei Choan)	Banteay Meanchey	Thma Puok	15,000	-6.3	-11.8	-6.3	↔	↔	↔
	Kampong Cham	Pha'av	15,333	9.5	2.2	9.5	↔	↔	↔
	Kampong Chhnang	Sala Lek Pram	14,333	0.0	-4.4	2.4	↔	↔	↔
	Kampong Speu	Bat Doeng	14,333	-2.3	0.0	0.0	↔	↔	↔
	Kampong Thum	Kampong Chheuteal	14,000	2.4	0.0	0.0	↔	↔	↔
	Kandal	S'ang	16,167	12.8	7.8	3.2	↔	↔	↔
	Oddar Meanchey	Anlong Veng	14,000	10.5	7.7	13.5	↔	↔	↔
	Prey Veng	Chheu Kach Thmei	15,000	0.0	7.1	7.1	↔	↔	↔
	Pursat	Chheu Tom	15,000	-6.3	-11.8	0.0	↔	↔	↔
	Siem Reap	Kralanh	12,000	0.0	-7.7	-7.7	↔	↔	↔
	Stung Treng	n/a	-	-	-	-	-	-	-
Svay Rieng	Kampong Trach	-	-	-	-	-	-	-	
Duck egg	Banteay Meanchey	Thma Puok	550	0.0	10.0	-8.3	↔	↔	↔
	Kampong Cham	Pha'av	493	3.5	12.1	-4.5	↔	↔	↔
	Kampong Chhnang	Sala Lek Pram	500	1.4	0.0	0.0	↔	↔	↔
	Kampong Speu	Bat Doeng	513	-1.9	2.7	2.7	↔	↔	↔
	Kampong Thum	Kampong Chheuteal	500	-11.8	0.0	0.0	↔	↔	↔
	Kandal	S'ang	483	0.0	-2.0	-3.3	↔	↔	↔
	Oddar Meanchey	Anlong Veng	500	1.4	0.0	-11.8	↔	↔	↔
	Prey Veng	Chheu Kach Thmei	500	0.0	6.4	0.0	↔	↔	↔
	Pursat	Chheu Tom	450	0.0	-3.6	-8.2	↔	↔	↔
	Siem Reap	Kralanh	500	0.0	0.0	-18.9	↔	↔	↔
	Stung Treng	n/a	-	-	-	-	-	-	-
Svay Rieng	Kampong Trach	-	-	-	-	-	-	-	

Price increase above normal fluctuation
 Normal price fluctuation
 Price decrease below normal fluctuation
 Commodity not available in reporting month

Price fluctuation is considered normal if change within:
 5% for month, 10% for 3 months, 15% for 1 year

(b) Urban markets

Food Item	Province	Market	price (Riel/kg)	price change (%)			direction of change		
				1 month	3 months	1 year	1 month	3 months	1 year
Second quality rice	Banteay Meanchey	Serei Saophoan	2,300	0.0	-	-8.0	↔	-	↔
	Kampong Cham	Boeung Kok	1,800	0.0	3.8	-16.3	↔	↔	↘
	Kampong Chhnang	Central	2,000	0.0	2.6	11.1	↔	↔	↔
	Kampong Speu	Central	1,950	-2.5	-2.5	8.3	↔	↔	↔
	Kampong Thum	Central	1,733	6.1	-3.7	-1.0	↗	↔	↔
	Kandal	Ta Khmao	2,067	3.3	0.0	3.3	↔	↔	↔
	Oddar Meanchey	Samraong	2,000	0.0	-	-	↔	-	-
	Prey Veng	Central	2,000	-	-	-	-	-	-
	Pursat	Central	1,867	0.0	-3.4	-5.1	↔	↔	↔
	Siem Reap	Psa Leu	2,067	0.0	3.3	-10.1	↔	↔	↔
Stung Treng	Stung Treng	-	-	-	-	-	-	-	
Svay Rieng	Central	-	-	-	-	-	-	-	
Lowest quality rice	Banteay Meanchey	Serei Saophoan	2,000	0.0	0.0	0.0	↔	↔	↔
	Kampong Cham	Boeung Kok	1,533	2.2	-4.2	9.5	↔	↔	↔
	Kampong Chhnang	Central	1,767	3.9	-1.9	8.2	↔	↔	↔
	Kampong Speu	Central	1,850	2.8	2.8	8.8	↔	↔	↔
	Kampong Thum	Central	1,500	0.0	-6.3	-3.2	↔	↔	↔
	Kandal	Ta Khmao	1,867	3.7	1.8	0.9	↔	↔	↔
	Oddar Meanchey	Samraong	1,800	-5.3	-10.0	-10.0	↘	↔	↔
	Prey Veng	Central	1,800	2.9	8.0	5.9	↔	↔	↔
	Pursat	Central	1,667	0.0	-7.4	0.0	↔	↔	↔
	Siem Reap	Psa Leu	1,700	0.0	2.0	-3.8	↔	↔	↔
Stung Treng	Stung Treng	-	-	-	-	-	-	-	
Svay Rieng	Central	-	-	-	-	-	-	-	
Vegetable oil	Banteay Meanchey	Serei Saophoan	5,800	0.0	5.5	-4.0	↔	↔	↔
	Kampong Cham	Boeung Kok	4,600	-0.7	-2.1	-11.0	↔	↔	↔
	Kampong Chhnang	Central	4,600	0.0	-8.0	-8.0	↔	↔	↔
	Kampong Speu	Central	4,667	0.0	3.7	-9.7	↔	↔	↔
	Kampong Thum	Central	4,967	0.7	2.8	-3.9	↔	↔	↔
	Kandal	Ta Khmao	4,833	1.4	-2.0	-14.5	↔	↔	↔
	Oddar Meanchey	Samraong	4,550	0.0	-17.2	-24.7	↔	↘	↘
	Prey Veng	Central	4,833	-2.0	-0.7	-6.5	↔	↔	↔
	Pursat	Central	4,533	-0.7	-6.2	-15.3	↔	↔	↘
	Siem Reap	Psa Leu	4,633	-0.7	-2.1	-20.9	↔	↔	↘
Stung Treng	Stung Treng	5,667	-	-	-	-	-	-	
Svay Rieng	Central	-	-	-	-	-	-	-	
Smoked fish (Trei Rie)	Banteay Meanchey	Serei Saophoan	-	-	-	-	-	-	-
	Kampong Cham	Boeung Kok	22,500	19.7	-	-9.8	↗	-	↔
	Kampong Chhnang	Central	21,000	-	6.4	-30.0	-	↔	↘
	Kampong Speu	Central	30,000	-	-	25.0	-	-	↗
	Kampong Thum	Central	20,000	0.0	-20.0	-4.8	↔	↘	↔
	Kandal	Ta Khmao	-	-	-	-	-	-	-
	Oddar Meanchey	Samraong	25,000	0.0	-	-	↔	-	-
	Prey Veng	Central	22,800	-	-	-	-	-	-
	Pursat	Central	-	-	-	-	-	-	-
	Siem Reap	Psa Leu	-	-	-	-	-	-	-
Stung Treng	Stung Treng	20,000	-	-	-	-	-	-	
Svay Rieng	Central	-	-	-	-	-	-	-	

Food Item	Province	Market	price (Riel/kg)	price change (%)			direction of change		
				1 month	3 months	1 year	1 month	3 months	1 year
Fresh fish (Trei Pra)	Banteay Meanchey	Serei Saophoan	6,000	0.0	-7.7	0.0	↔	↔	↔
	Kampong Cham	Boeung Kok	6,000	-7.7	-14.3	-10.0	↘	↘	↔
	Kampong Chhnang	Central	-	-	-	-	-	-	-
	Kampong Speu	Central	6,500	0.0	0.0	-	↔	↔	-
	Kampong Thum	Central	-	-	-	-	-	-	-
	Kandal	Ta Khmao	7,167	4.9	2.4	-	↔	↔	-
	Oddar Meanchey	Samraong	5,000	0.0	0.0	0.0	↔	↔	↔
	Prey Veng	Central	6,500	-7.1	8.3	30.0	↘	↔	↗
	Pursat	Central	-	-	-	-	-	-	-
	Siem Reap	Psa Leu	5,833	2.9	22.8	0.0	↔	↗	↔
Stung Treng	Stung Treng	7,333	-	-	-	-	-	-	
Svay Rieng	Central	-	-	-	-	-	-	-	
Pork with fat (Sach Bei Choan)	Banteay Meanchey	Serei Saophoan	16,000	0.0	-11.1	2.1	↔	↘	↔
	Kampong Cham	Boeung Kok	15,667	-2.1	-2.1	-6.9	↔	↔	↔
	Kampong Chhnang	Central	15,333	0.0	-4.2	-4.2	↔	↔	↔
	Kampong Speu	Central	15,000	4.7	0.0	0.0	↔	↔	↔
	Kampong Thum	Central	13,000	-4.9	0.0	-7.1	↔	↔	↔
	Kandal	Ta Khmao	16,333	0.0	-3.9	-3.9	↔	↔	↔
	Oddar Meanchey	Samraong	13,667	-2.4	-8.9	-8.9	↔	↔	↔
	Prey Veng	Central	16,000	-2.0	-2.0	2.1	↔	↔	↔
	Pursat	Central	13,333	0.0	-11.1	-16.7	↔	↘	↘
	Siem Reap	Psa Leu	13,000	0.0	-7.1	-6.0	↔	↔	↔
Stung Treng	Stung Treng	14,667	-	-	-	-	-	-	
Svay Rieng	Central	-	-	-	-	-	-	-	
Duck egg	Banteay Meanchey	Serei Saophoan	500	0.0	0.0	-3.2	↔	↔	↔
	Kampong Cham	Boeung Kok	500	1.4	1.4	3.4	↔	↔	↔
	Kampong Chhnang	Central	500	0.0	0.0	5.6	↔	↔	↔
	Kampong Speu	Central	500	0.0	-3.2	0.0	↔	↔	↔
	Kampong Thum	Central	500	-11.8	0.0	-3.2	↘	↔	↔
	Kandal	Ta Khmao	493	3.5	-2.6	-2.6	↔	↔	↔
	Oddar Meanchey	Samraong	517	-7.7	-3.1	-8.8	↘	↔	↔
	Prey Veng	Central	510	3.4	1.3	2.0	↔	↔	↔
	Pursat	Central	500	11.1	4.9	8.7	↗	↔	↔
	Siem Reap	Psa Leu	510	0.7	0.7	-5.0	↔	↔	↔
Stung Treng	Stung Treng	-	-	-	-	-	-	-	
Svay Rieng	Central	-	-	-	-	-	-	-	

- ↗ Price increase above normal fluctuation
- ↔ Normal price fluctuation
- ↘ Price decrease below normal fluctuation
- Commodity not available in reporting month

Price fluctuation is considered normal if change within:
5% for month, 10% for 3 months, 15% for 1 year