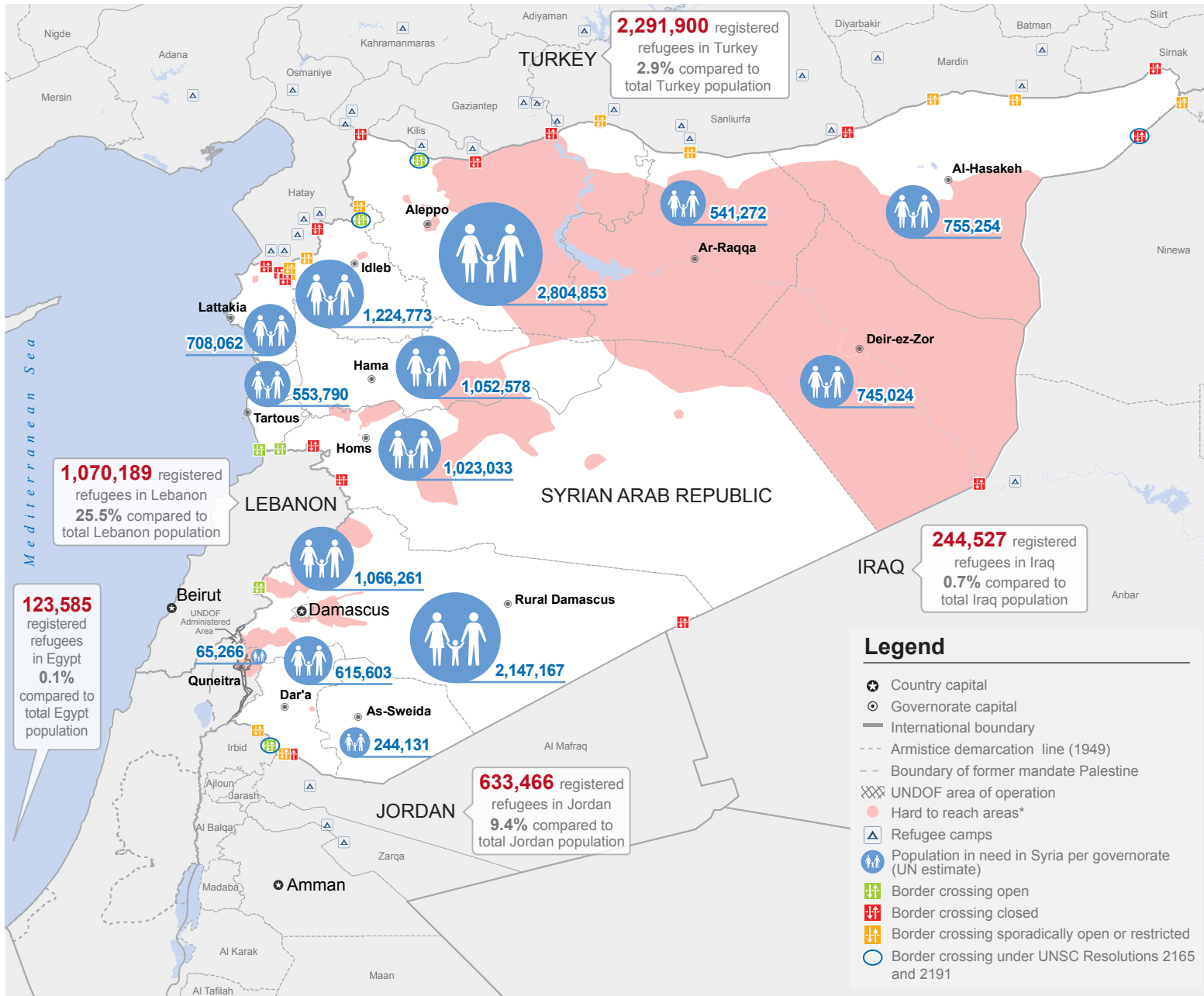


Syrian Arab Republic: Humanitarian Snapshot (as of 31 December 2015)



4,390,439 Registered Syrian refugees
(including **26,772** refugees registered in other countries in North Africa)



13.5 million People in need of humanitarian assistance inside Syria



Internally Displaced Persons by Governorate
6,563,462 Internally Displaced Persons**



Rural Damascus	1,269,202
Aleppo	1,246,968
Idleb	704,511
Homs	526,510
Hama	500,801
Damascus	436,170
Lattakia	377,974
Dara	320,773
Deir-ez-Zor	318,684
Al-Hasakeh	301,618
Tartous	258,505
Ar-Raqqa	201,350
As-Sweida	61,696
Quneitra	38,700

*Hard-to-reach area: An area that is not regularly accessible to humanitarian actors for the purposes of sustained humanitarian programming as a result of denial of access, including the need to negotiate access on an ad hoc basis, or due to restrictions such as active conflict, multiple security checkpoints, or failure of the authorities to provide timely approval.

** 2016 Humanitarian Needs Overview

The designations employed and the presentation of material on this map do not imply the expression of any opinion whatsoever on the part of the Secretariat of the United Nations concerning the legal status of any country, territory or area or of its authorities, or concerning the delimitation of its frontiers or boundaries.