

SITUATION OVERVIEW

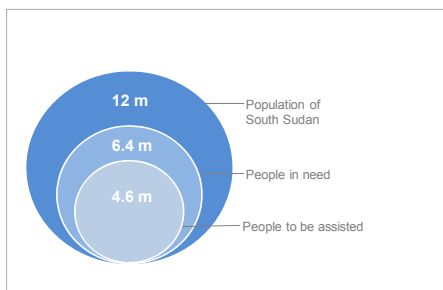
By the end of 2015, more than 2.3 million people had fled their homes in South Sudan since fighting broke out in December 2013, with over 1.69 million internally displaced and 648,285 who have fled as refugees to neighbouring countries. As at 31 December, nearly 193,798 people sheltering in Protection of Civilians (PoC) sites in United Nations bases, with Bentiu PoC site alone hosting nearly 115,000 people.

As of 31 December 2015, some US\$1.04 billion was secured for the 2015 Humanitarian Response Plan, representing 64 per cent of the total requirement of \$1.64 billion for the year. Despite the many challenges, about 4.5 million people had been reached with humanitarian assistance in 2015.

People to be assisted



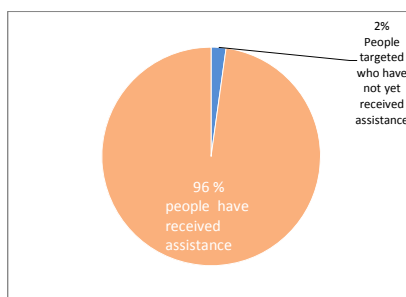
4.6 million people to be assisted in 2015



People reached



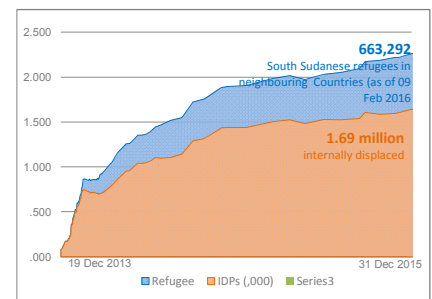
4.5 million* people reached as of 25 Dec



Displaced people



2.3 million people as of 31 December



The total number of people displaced is likely higher, as aid agencies have limited information about displacement outside main population centres. Figures of displacement outside PoC sites have in most cases not been independently verified by humanitarian partners because of security concerns.

FUNDING: South Sudan 2015 Humanitarian Response Plan

\$ 1.64 billion
REQUESTED (US\$)

65%
FUNDED

\$ 1.07 billion
RECEIVED (US\$)

Requirements by cluster (mn \$)

Percentage funded by cluster

Funded million \$ Unmet million \$

Cluster	Requirements (mn \$)	Percentage funded	Funded million \$	Unmet million \$
CCCM	67.8	42%	28.6	39.2
Coordination	32.3	27%	8.7	23.6
Education	41.0	91%	37.4	3.5
ETC	1.6	78%	1.2	.3
Food Security and Livelihoods	623.2	51%	318.2	305
Health	93.3	89%	82.7	11
Logistics	114.3	77%	88.2	26.1
Mine Action	14.5	57%	8.2	6
Refugee Response	241.2	30%	73.4	167.8
Shelter & NFI	65.5	48%	31.6	34
Nutrition	149.0	59%	88.4	61
Protection	60.0	69%	41.6	18.4
WASH	131.9	70%	92.2	39.8

Contributions (million)

United States	270.5
United Kingdom	163.9
European Commission	114.6
Various (details not yet provided)	107.3
Allocation of unearmarked funds by UN agencies	46.7
Japan	42.0
Private (individuals & organisations)	40.8
Carry-over (donors not specified)	38.5
Norway	34.8
Canada	32.4
Central Emergency Response Fund (CERF)	26.9
Netherlands	17.8
Germany	16.9
Denmark	13.4
Sweden	12.9
Switzerland	12.6
Ireland	11.9
Belgium	7.9
China	5.0
Others	25.6

Estimated population (based on 2008 census, returnees, refugees in-country and population growth). The funding figures are from fts.unocha.org as of 4 January 2016. The dashboard is based on the best available data at the time of issue. Figures for people in need and targeted are changing rapidly due to the fluid situation.

Creation date: 05 January 2016 Glide number: OT-2015-000002-SSD Feedback: ochasouthsudan@un.org/ imusouth@un.org
Humanitarian clusters in South Sudan, 2. OCHA South Sudan CHF and OCHA FTS, 3. Humanitarian Response Plan (HRP)
* Sources : This data is compiled on the basis of information submitted to OCHA on a monthly basis by humanitarian clusters in South Sudan

www.unocha.org/south-sudan www.reliefweb.int http://fts.unocha.org Sources: 1.

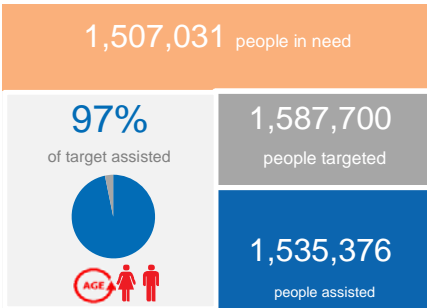
STRATEGIC OBJECTIVES

- 1. Save lives and alleviate suffering by providing multi-sector assistance to people in need.
- 2. Protect the rights of the most vulnerable people, including their freedom of movement.
- 3. Improve self-reliance and coping capacities of people in need by protecting, restoring and promoting their livelihoods.

CLUSTER OVERVIEW (as of December 2015)



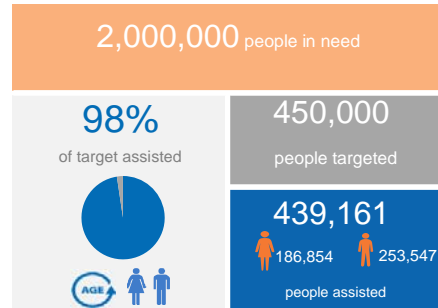
CCCM



Number of people in PoCs, Collective Centers and Spontaneous Settlements covered by DTM.
CCCM: Camp Coordination and Camp Management



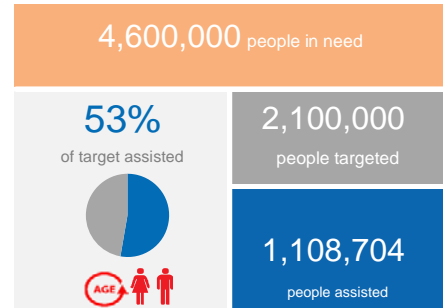
EDUCATION



Number of children accessing Education in Emergencies (through accessing established, rehabilitated or constructed learning spaces)



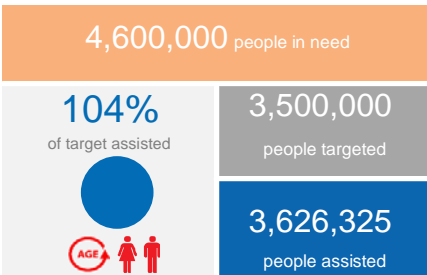
FSL (Food)



Number of people assisted with food and conditional/unconditional cash transfers.
FSL : Food Security and livelihoods



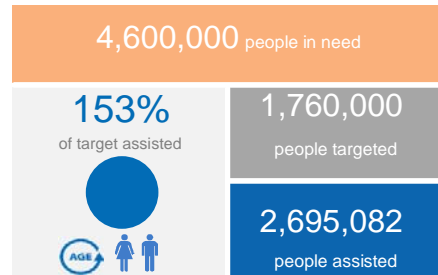
FSL (Livelihoods)



Number of people assisted with livelihood inputs.
FSL : Food Security and livelihoods



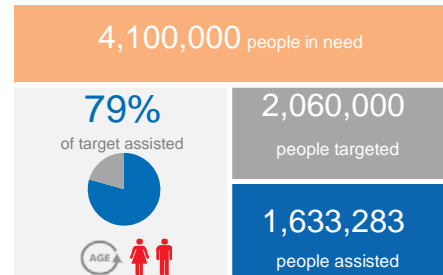
HEALTH



Number of vaccine deliverance



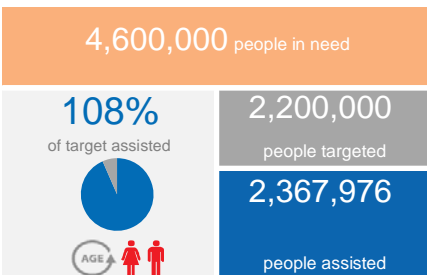
NUTRITION



Number of boys and girls aged 0-59 months with SAM and MAM admitted for treatment



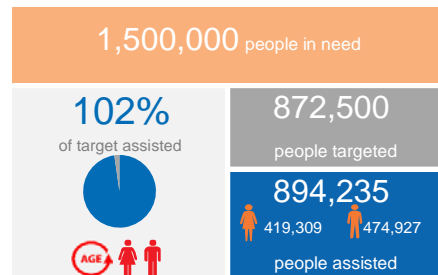
PROTECTION



Number of people who have benefited from protection mainstreaming, GBV and Child protection



NFI/ES



Number of people in need served with non food items



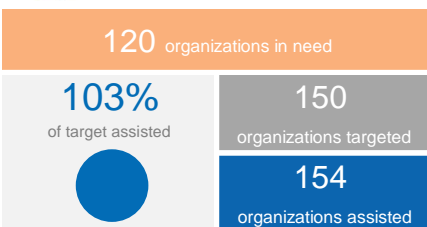
WASH



WASH : Water, Sanitation and Hygiene



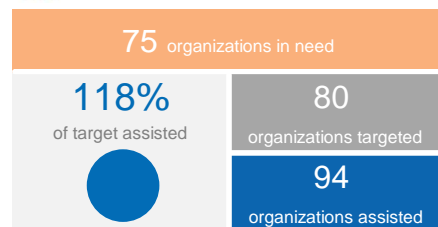
ETC



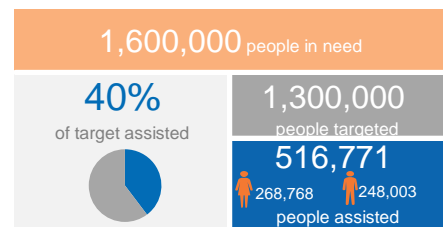
ETC : Emergency Telecommunication



LOGISTICS



MINE ACTION



No data disaggregated by age
 No data disaggregated by gender
 Data disaggregated by age
 Data disaggregated by gender
 Data partially disaggregated by age
 Data partially disaggregated by gender

Female assisted
 Male assisted