

SITUATION OVERVIEW

More than 2.29 million people have fled their homes since fighting broke out in December 2013, with over 1.65 million displaced inside South Sudan and 639,576 refugees in neighboring countries. In South Sudan, more than 184,000 people are currently sheltering in Protection of Civilians (PoC) sites in UN bases. However, nearly 90 per cent of IDPs are living outside the PoC sites.

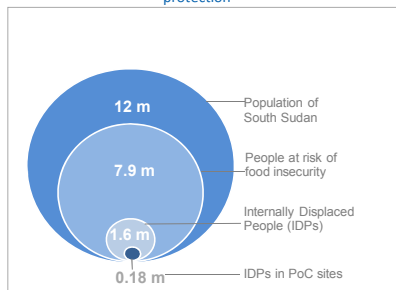
In September, displaced people in Unity State continued to arrive in Nyal, Mayom and Bentiu in search of assistance and protection, while in Upper Nile State the influx of people from the western bank to Malakal PoC site continued. In the Equatorias, clashes and insecurity in the areas of Wonduruba and Mundri forced civilians to flee their homes.

As of 15 October, some US\$889 million had been secured for 2015 Humanitarian Response Plan, equivalent to 54 per cent of the total requirement of \$1.63 billion. This leaves a gap of \$741 million. Funding is urgently required for humanitarian partners to continue to provide life-saving assistance and protection in South Sudan. About 3.1 million people have been reached with some sort of assistance in 2015.

People in need



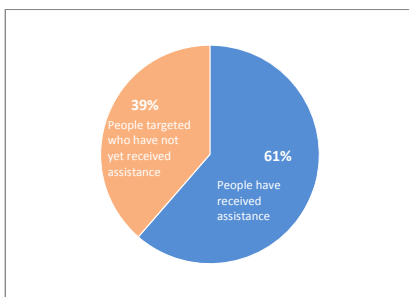
4.6 million people in need of assistance and protection



People to be assisted



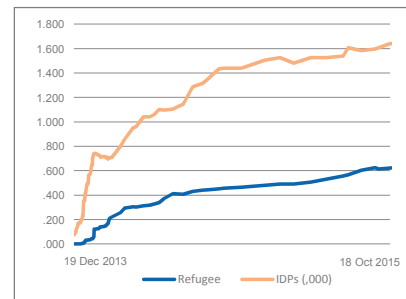
4.6 million people targeted
3.1 million people reached as of 25 Aug



Displaced people



2.29 million people as of 2 September



The total number of people displaced is likely higher, as aid agencies have limited information about displacement outside main population centres. Figures of displacement outside UN bases have in most cases not been independently verified by humanitarian partners because of security concerns.

FUNDING: South Sudan Humanitarian Response Plan (Jan - Dec 2015)

\$ 1.63 billion

REQUESTED (US\$)

Requirements by cluster (mn \$)

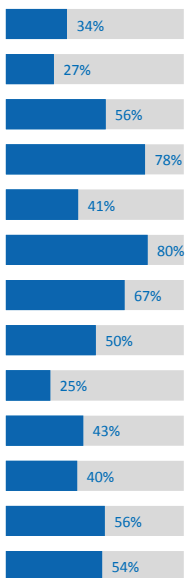
Cluster	Requirements (mn \$)
CCCM	67.8
Coordination	32.3
Education	41.0
ETC	1.6
Food Security and Livelihoods	623.2
Health	93.3
Logistics	114.3
Mine Action	14.5
Multisector	241.0
Shelter & NFI	65.5
Nutrition	149.0
Protection	60.0
WASH	129.5



54%

FUNDED

Percentage funded by cluster



Funded million \$ Unmet million \$

Cluster	Funded (mn \$)	Unmet (mn \$)
CCCM	23.2	44.6
Coordination	8.7	23.6
Education	22.9	18.0
ETC	1.2	.3
Food Security and Livelihoods	253.4	370
Health	74.3	19
Logistics	76.2	38.0
Mine Action	7.3	7
Multisector	60.2	180.9
Shelter & NFI	28.5	37
Nutrition	59.8	89
Protection	33.3	26.7
WASH	70.0	59.5



889 million

RECEIVED (US\$)

Contributions (million)

United States	326.1
United Kingdom	159.4
European Commission	123.1
Various (details not yet provided)	73.9
Japan	67.6
Allocation of unearmarked funds by UN agencies	45.4
Canada	39.4
Carry-over	38.5
Private (individuals & organisations)	35.9
CERF	26.9
Germany	26.0
Sweden	22.1
Norway	19.6
Netherlands	19.2
Switzerland	15.7
Ireland	12.1
Denmark	11.8

*Estimated population (based on 2008 census, returnees, refugees in-country and population growth). The funding figures are from www.fts.org as of 8 September 2015. The dashboard is based on the best available data at the time of issue. Figures for people in need and targeted are changing rapidly due to the fluid situation.

STRATEGIC OBJECTIVES

1. Save lives and alleviate suffering by providing multi-sector assistance to people in need.
2. Protect the rights of the most vulnerable people, including their freedom of movement.
3. Improve self-reliance and coping capacities of people in need by protecting, restoring and promoting their livelihoods.

CLUSTER OVERVIEW (as of September)



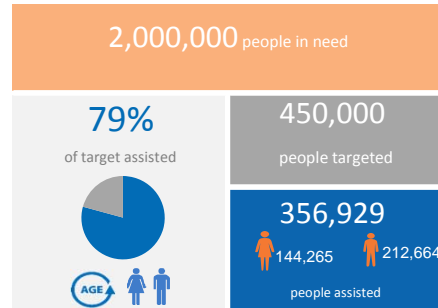
CCCM



Number of people in PoCs, Collective Centers and Spontaneous Settlements covered by DTM.
CCCM: Camp Coordination and Camp Management



EDUCATION



Number of children accessing Education in Emergencies (through accessing established, rehabilitated or constructed learning spaces)



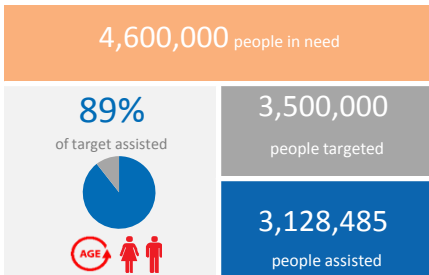
FSL (Food)



Number of people assisted with food and conditional/unconditional cash transfers.
FSL: Food Security and livelihoods



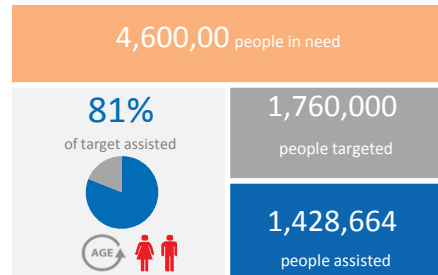
FSL (Livelihoods)



Number people assisted with livelihood inputs.
FSL: Food Security and livelihoods



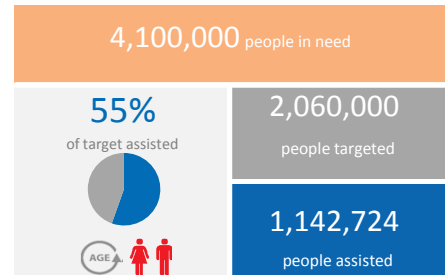
HEALTH



Number of outpatient consultations in conflict-affected and other vulnerable states



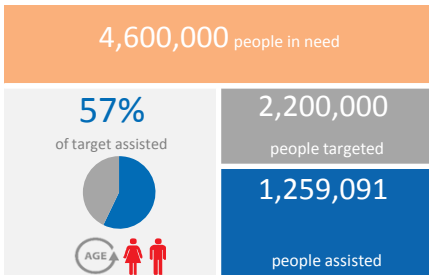
NUTRITION



Number of boys and girls aged 0-59 months with SAM and MAM admitted for treatment



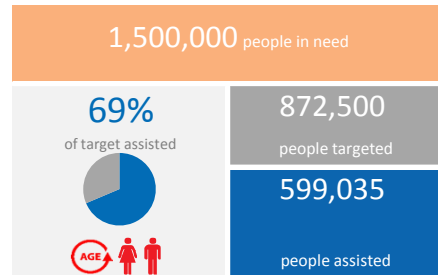
PROTECTION



ETC: Emergency Telecommunication



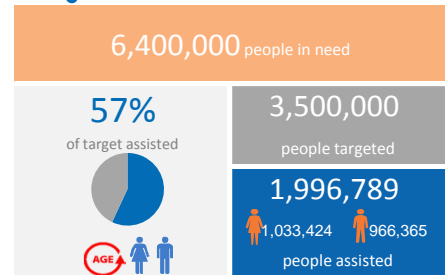
NFI/ES



NFI/ES: people in need served with emergency shelter and people in need served with NFI



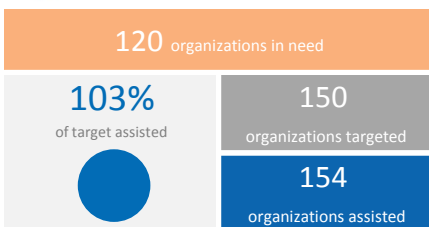
WASH



WASH: Water, Sanitation and Hygiene



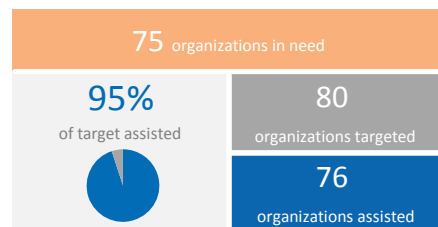
ETC



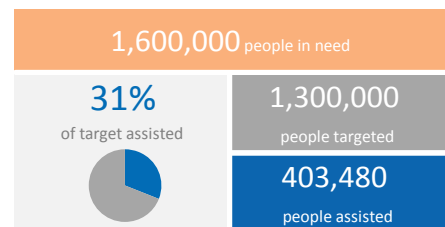
ETC: Emergency Telecommunication



LOGISTICS



MINE ACTION



No data disaggregated by age
 Data disaggregated by age
 Data partially disaggregated by age
 Female assisted
 Male assisted

No data disaggregated by gender
 Data disaggregated by gender
 Data partially disaggregated by gender