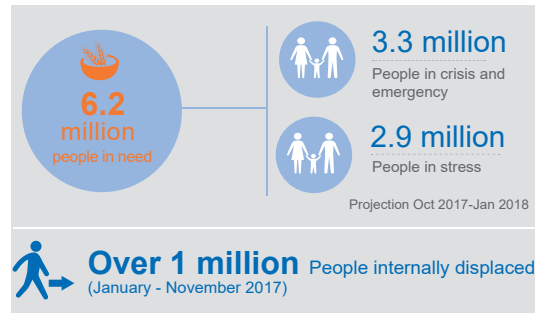


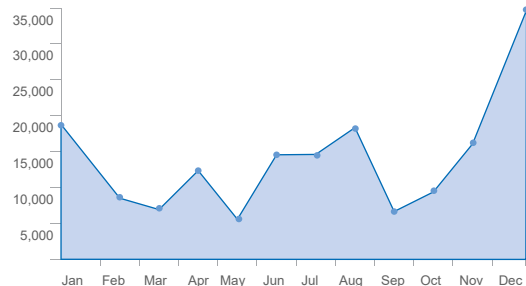
The *Deyr* rains (October- December) were below average, impacting negatively on crop production and pasture conditions across the country. Food security needs are nearly double the five-year average. More than two million people, including over one million in 2017, are displaced and constitute one-third of the 6.2 million people in need of assistance. Life-saving assistance alongside livelihood support is required to address the humanitarian needs.



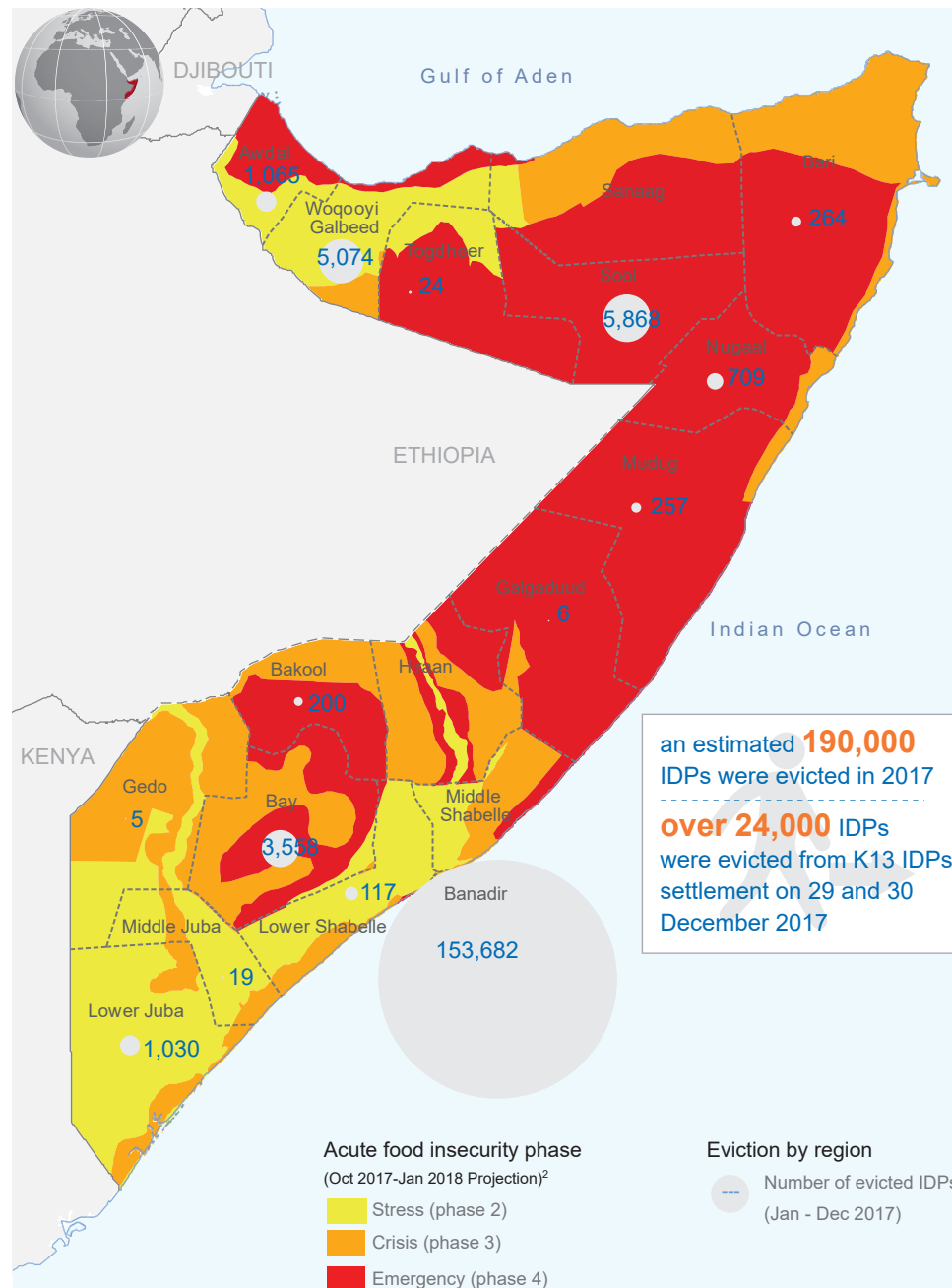
EVICIONS

On 29 and 30 December 2017, a private landlord forcibly evicted nearly 4,000 internally displaced households within KM 13 area, Kahda District, Mogadishu. Massive loss of personal and public property including communal infrastructure provided by multiple humanitarian organizations (water points, sanitary facilities, community centers and public institutions) were destroyed.

Timeline of evictions across the country (January - December 2017*)¹



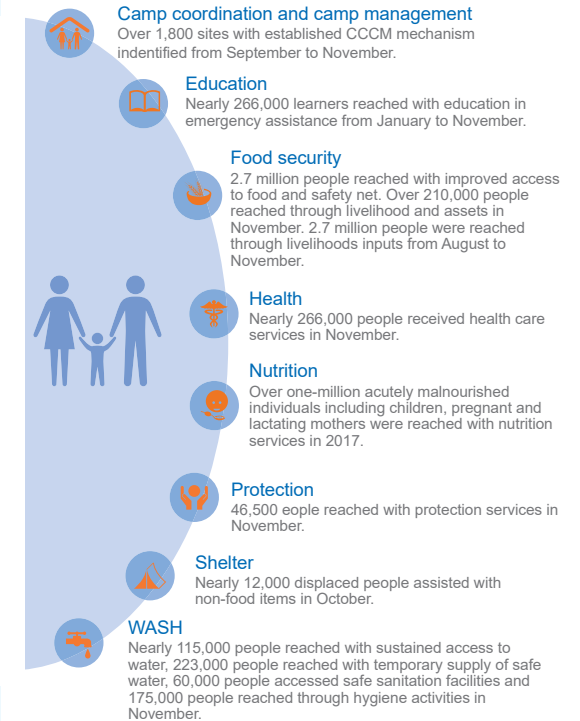
* This does not include all the data for December



HUMANITARIAN RESPONSE

Famine prevention efforts continued into 2018. Early funding to support the 2018 Humanitarian Response Plan will be critical to enable humanitarian partners to sustain the current life-saving efforts.

Response by cluster (November 2017)



For more details on humanitarian response see the humanitarian dashboard in this link: <https://tinyurl.com/yagml9cd>

FUNDING

The 2018 Somalia Humanitarian Response Plan will be launched on 17 January. It will reflect the needs and targets for 2018. In 2017, donors provided over \$1.25 billion towards humanitarian response.



The boundaries and names shown and the designations used on this map do not imply official endorsement or acceptance by the United Nations.

Creation date: 11 January 2018 Sources: 1. UNHCR-PRMN, 2. FAO-FSNAU and FEWS NET, 3. Financial Tracking Service (FTS - 11 January 2018) Feedback: ochasomalia@un.org www.unocha.org www.reliefweb.int

www.humanitarianresponse.info/en/operations/somalia Produced by Information Management Unit