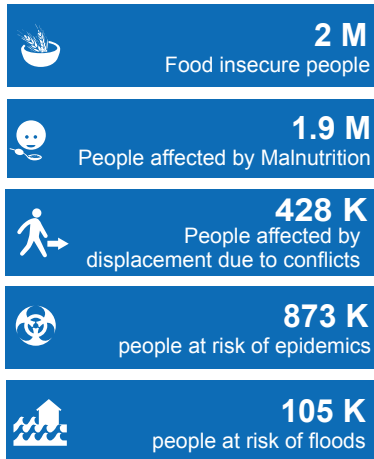


NIGER: Humanitarian Situation Overview (as of 25 Feb 2016)

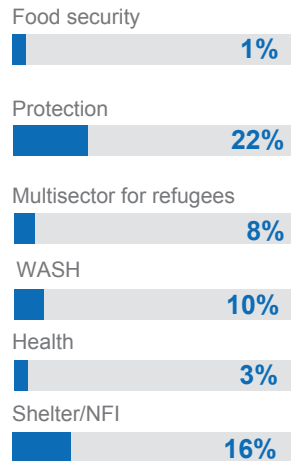
In Niger, poverty, demographic pressure and recurrent shocks -droughts, floods, epidemics, and high food prices -are among the key causes of vulnerability.

Insecurity in Mali and Nigeria, has led to displacement of people to Niger. In addition, the country is experiencing internal displacement of people due to armed attacks in Diffa since February 2015. The number of people in need of humanitarian assistance in 2016 is 2 million, and 316 million of funding is required.

PEOPLE IN NEED*



FUNDING SECURED IN 2016



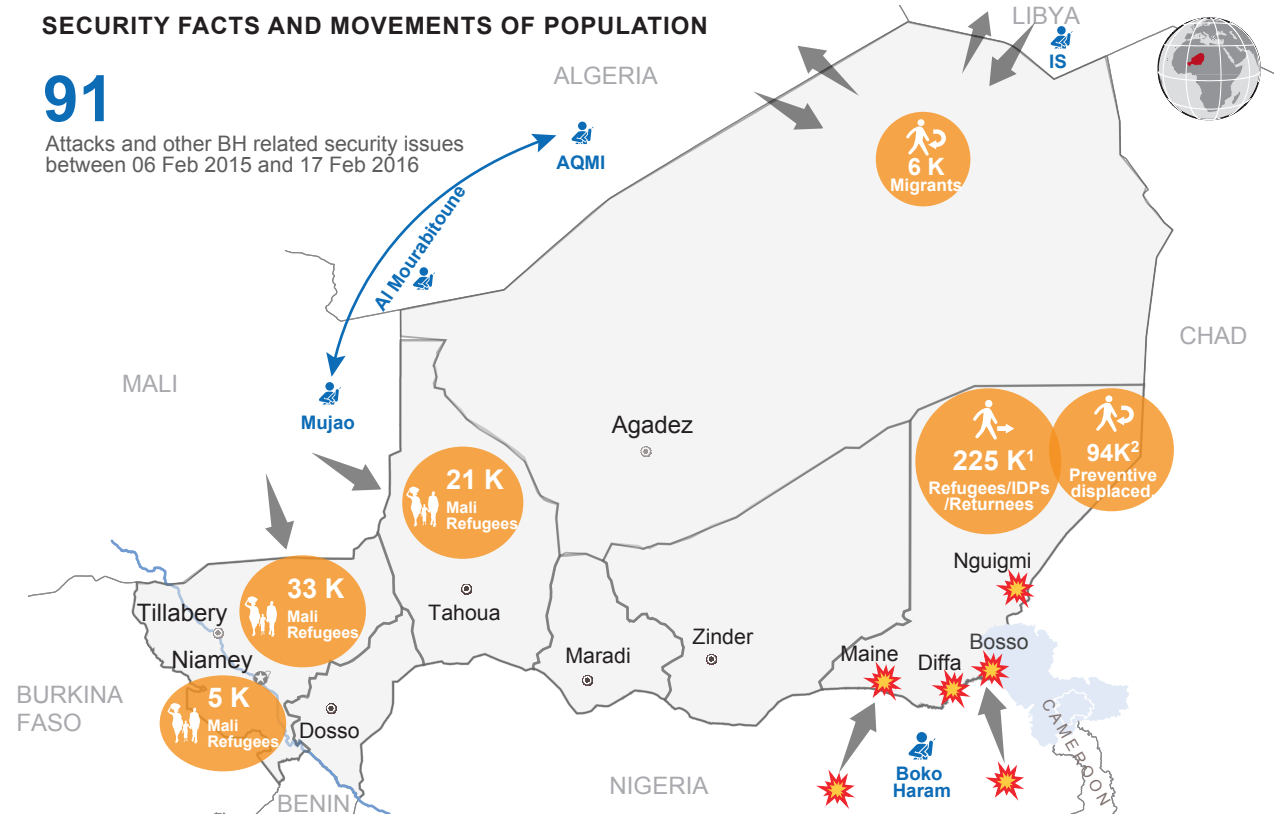
*Source: 2016 Humanitarian Needs Overview

*Source: FTS (as of Feb 08, 2016)

SECURITY FACTS AND MOVEMENTS OF POPULATION

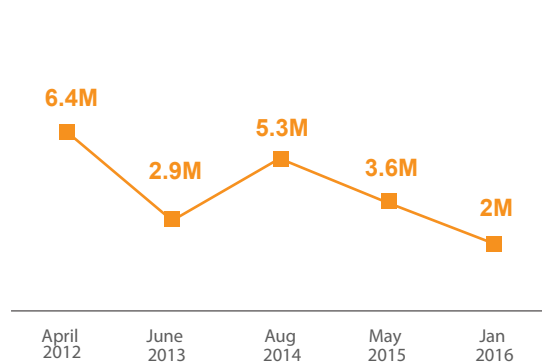
91

Attacks and other BH related security issues between 06 Feb 2015 and 17 Feb 2016

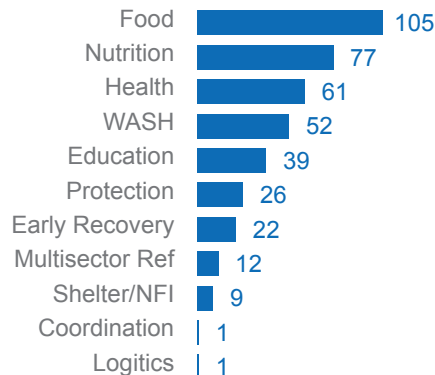


The boundaries and names shown and the designations used on this map do not imply official endorsement or acceptance by the United Nations.
1. DREC figures from Nov 2015 2. Temporary data pending the registration by the DREC

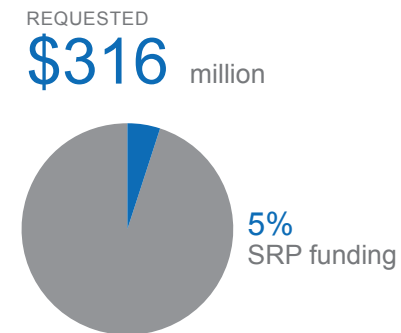
EVOLUTION OF THE NUMBER OF PEOPLE IN NEED



OPERATIONAL PRESENCE BY SECTOR (Number of partners)



HUMANITARIAN FUNDING IN 2016 (As of 25 Feb 2016)



MAIN CHALLENGES

- Limited financial resources, not timely available
- Lack of reliable data
- Restricted humanitarian access mainly in Diffa region
- Insufficient Human Resources
- Volatile security situation