

Affected Population

306.221 Families **1.514.662** Persons



1,642 Injured **603 Death**

From the 10th to the 23rd of March, the Central region of Mozambique was hit by heavy rain (more than 200mm in 24 hours) and strong winds (180 - 220KM/H per hour), caused by TC IDAI mainly in the Provinces of Sofala, Manica, Zambezia, Tete and Inhambane.

Main Impacts



3.504
Classrooms destroyed



335.132
Students affected



93
Health facilities destroyed



715,378 ha
Crops field flooded

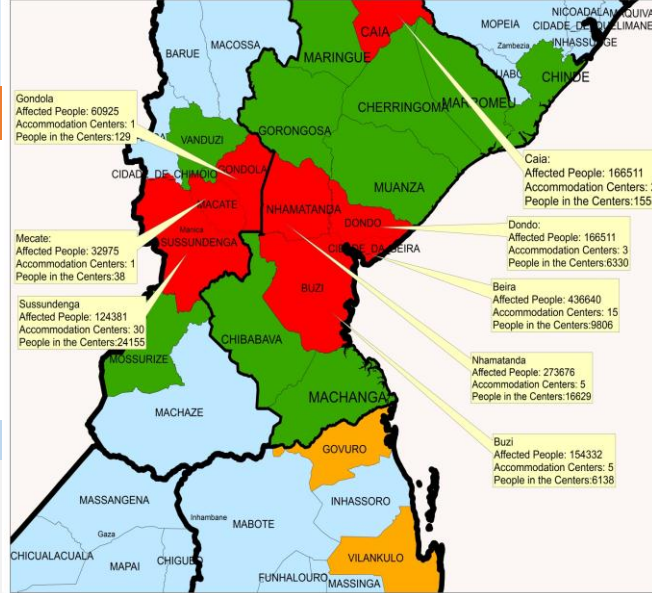


Partially destroyed **Totally destroyed**
112.745 **111.202**

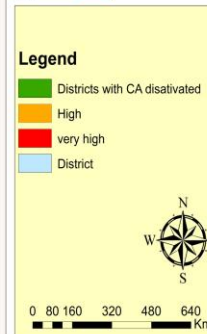
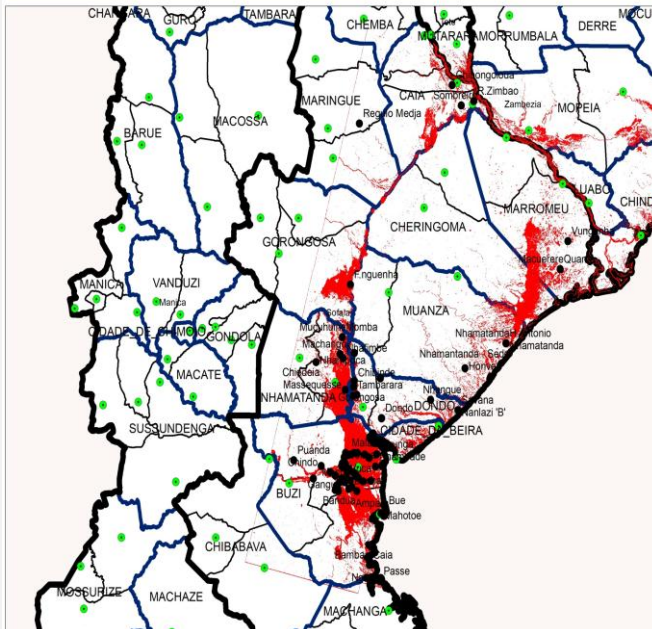


Flooded houses
15.784

The Impact of the Tropical Cyclone IDAI (Preliminary data)



Districts affected by the Tropical Cyclone IDAI



Humanitarian Assistance

Shelter and Non Food Items



14,084
Families

Accommodation Centers

Province	Number of center	People in the center	family in the center
Zambezia	3	5552	1149
Tete	5	2655	631
Sofala	29	38081	8269
Manica	32	24322	4035
Total	69	70610	14084

Vulnerable groups



41,782
enrolled in the INAS programs

Ongoing response activities

1. Humanitarian assistance to the affected people;
2. Assembly of cholera treatment Centers;
3. Rapid restoration of basic social services (Roads, Powerlines, Water, Comunication);
4. Identification of safe areas for resettlement of the affected people;
5. Assessment of the needs and the real damages caused by TC IDAI;
6. Mapping of the affected Districts using Drones.

Resettlement plan

Province	District	Plotted parcels	Plots allocated	Plots to occupy
Manica	Sussundenga	333	315	18
Sofala	Dondo	131	0	131
Sofala	Nhamatanda	297	144	153
Sofala	Buzi	549	119	430
Sofala	Caia	157	157	0
Zambezia	Maganja da Costa	651	466	185
Zambezia	Namacura	550	550	0
Zambezia	Nicudala	384	368	16
Sofala	Beira	202		202
Total		3254	2119	1135