



World Health Organization

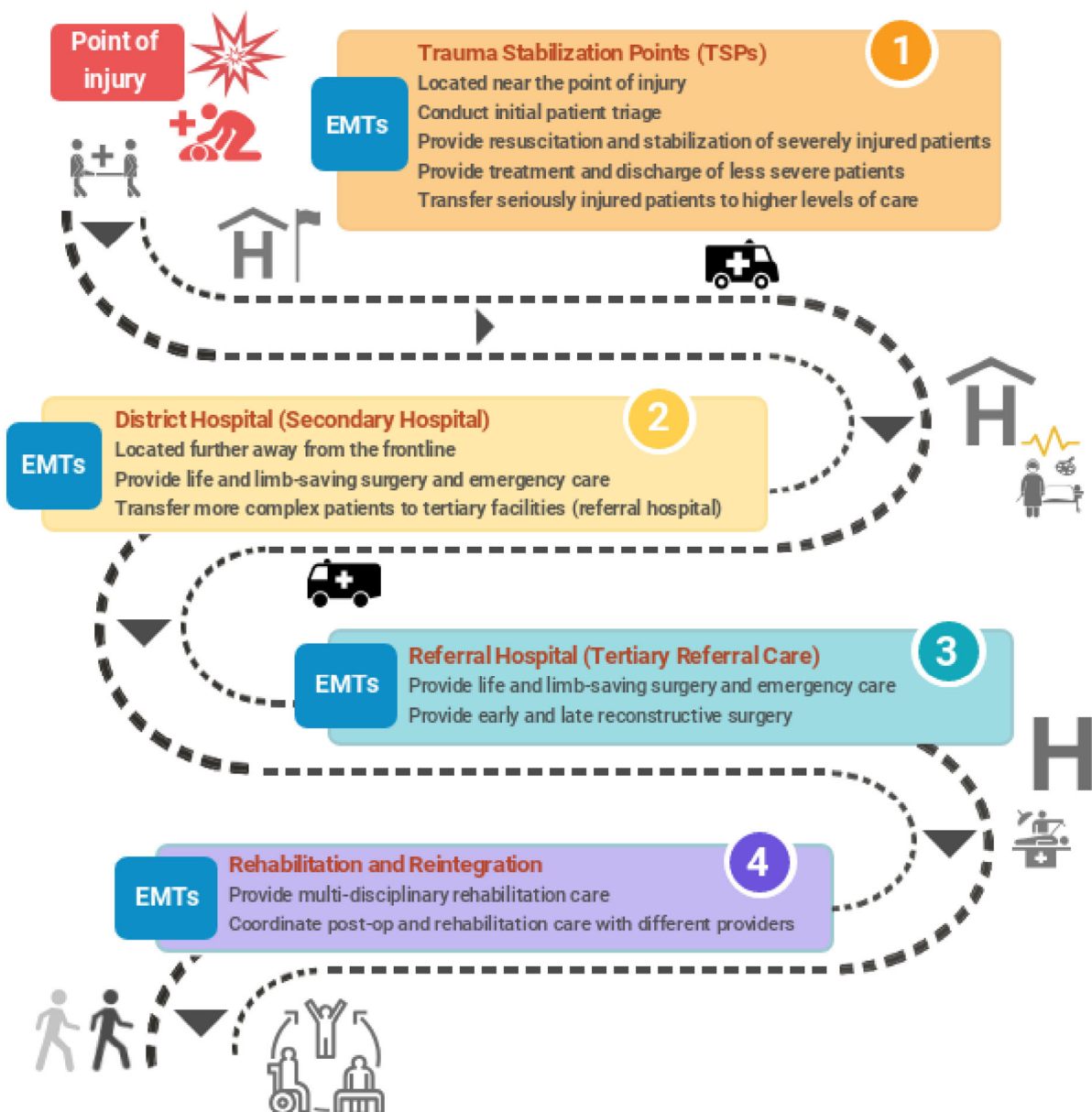
## The Trauma Pathway From A → Z



HEALTH CLUSTER

The trauma pathway approach ensures that quality and adequate medical care is provided to every injured person from the point of injury to rehabilitation and re-integration in society.

National and international emergency medical teams (EMTs) provide surge capacity to the local Ministry of Health (MoH).



WHO is working across the trauma pathway to ensure that people with conflict-related injuries have access to life saving medical care.