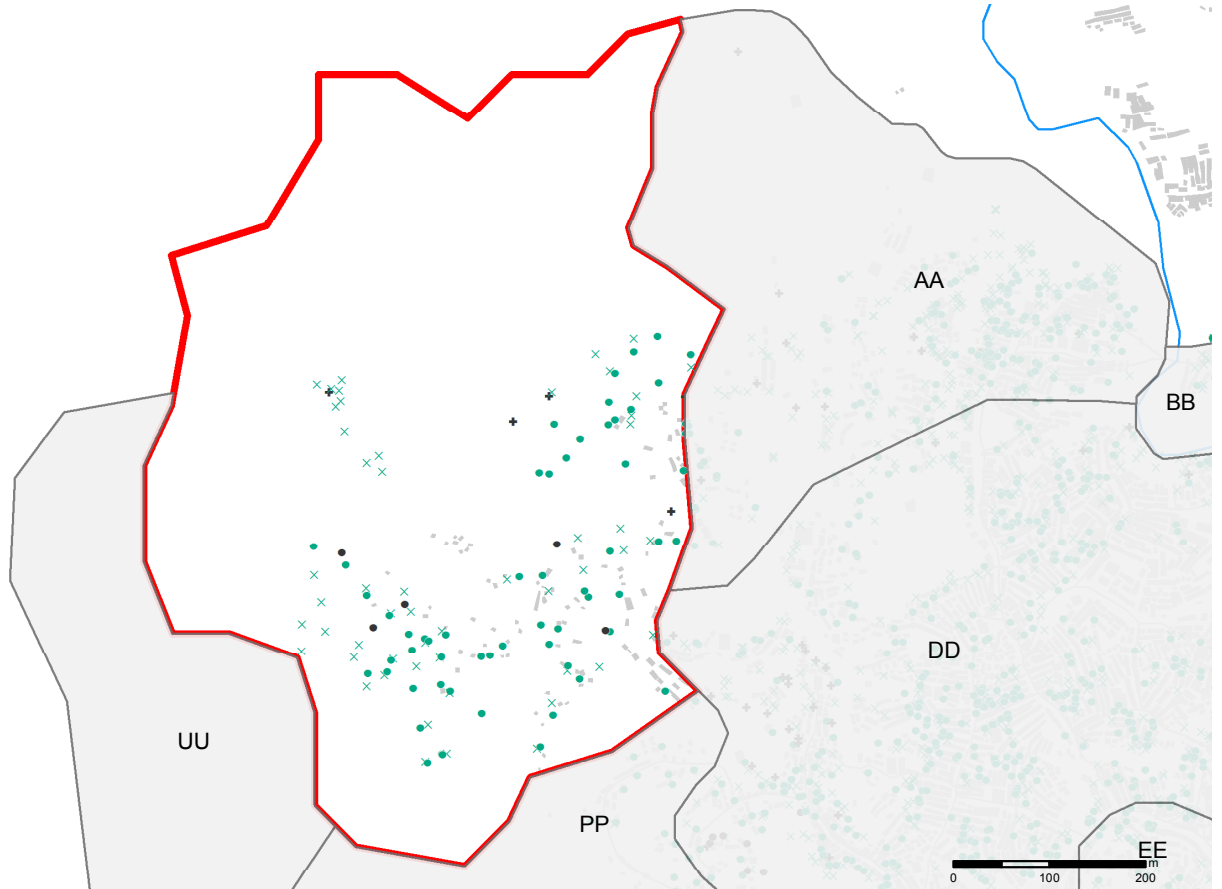




## Sanitation

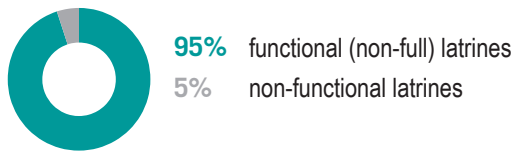
### Infrastructure

- x Latrine
- Washroom
- + Open defecation area
- x Latrine (not functional)
- Washroom (not functional)
- Rivers
- Footpaths
- Buildings
- Kutupalong zone OO
- Adjacent refugee site

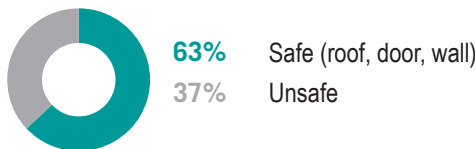


### Latrine characteristics

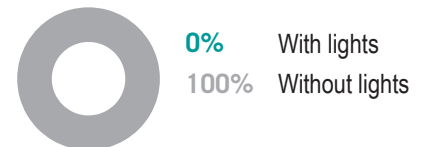
#### % of functional/non-functional latrines



#### % of safe/unsafe latrines:



#### % of latrines with/without lights



### Key sectoral achievements

	Target	Previous Round	Current Round	Achievement
# of people per functional (non-full) latrine	max. 50 <sup>4</sup>	N/A	N/A	N/A
# of people per safe latrine	N/A	N/A	N/A	N/A
% of shelters within 50 meters to a functional (non-full) latrine	100%	N/A	78%	●
% of latrines that are at least 10 meters away from a water point	100%	N/A	0%	●

Targets based on WASH Sector Standards/Indicators for Rohingya response, Sphere Minimum Standards/Indicators as well as DPHE Minimum Standards/Indicators ● Minimum standard/indicator reached, ● 75%-99% minimum standard/indicator reached, ● 50-74% minimum standard/indicator reached, ● Less than 50% of minimum standard/indicator reached

<sup>4</sup>This target is based on standards for the long term (6 months +), for the immediate phase (0-3 months) it is 100 and for the medium phase (3-6 months) 75.