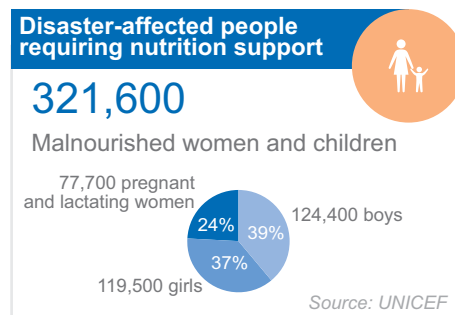
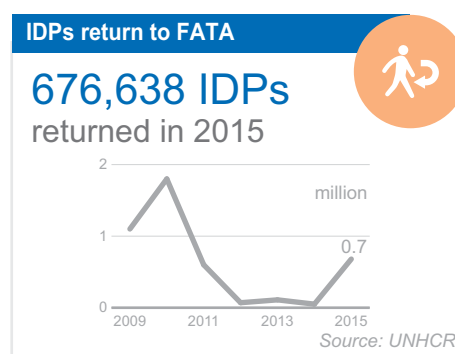
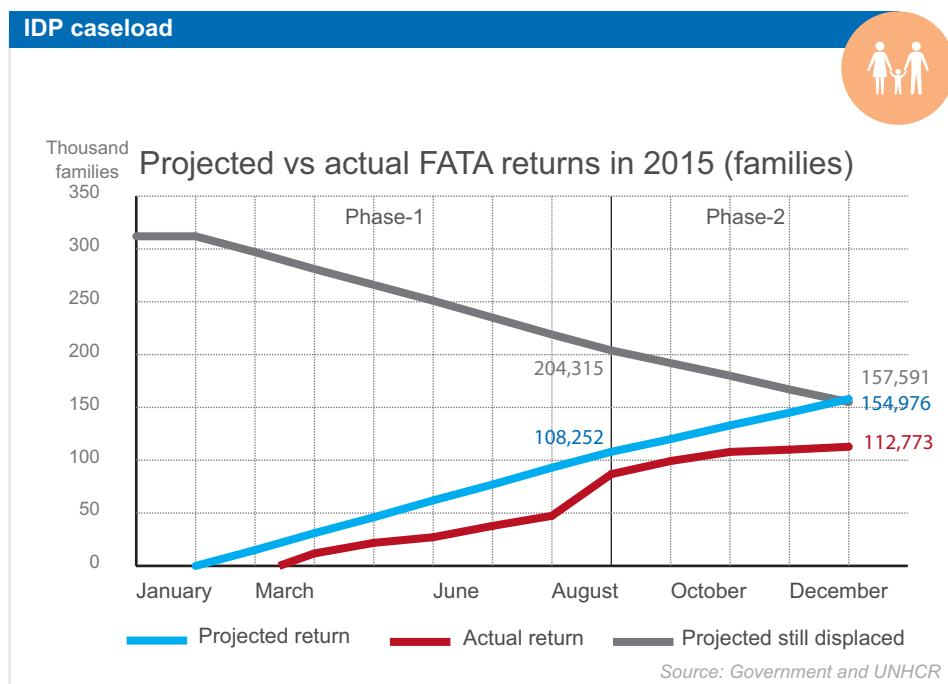


SITUATION OVERVIEW

The Pakistan Humanitarian Strategic Plan for 2015 was 68% funded as of 31 December, 2015. Overall progress on the strategic objectives continued in the fourth quarter despite the funding shortfall. Selected indicators from Food Security, Nutrition, Protection, Education, and Community Restoration achieved their annual targets, and all cluster remained engaged in delivering humanitarian services. Of the 15 indicators for the 2015 Strategic Objectives, 9 were on track (having achieved at least 80 per cent), and 6 had major gaps. Strategic Objective One, which aims to reduce morbidity and mortality, was the most successful with all indicators on target. Strategic Objective Three - supporting the transition to recovery – remained the greatest challenge, with one target achieved and major gaps for the remaining three indicators. The fourth quarter of 2015 saw a decrease in returns due to winter, with five Agencies receiving returnees. The difficulties of humanitarian access in return areas limited interventions contributed to the low performance of Strategic Objective Three, resulting in decreased support for returnees in their place of origin. Enhanced livelihood's and better access will be crucial to sustainable returns in 2016. With 113,000 families returning in 2015, and an additional 180,000 families planned for 2016, the limited ability to support these families in FATA remains a serious concern.

KEY FIGURES



FUNDING

\$ 434 million
REQUESTED (US\$)

68%
FUNDED

\$ 295million*
RECEIVED (US\$)

Requirements by cluster (million US\$)

Per cent funded by cluster

Cluster	Requirement (million US\$)	Funded (million US\$)	Unmet (million US\$)
Food Security	173**	158	15
Emergency Shelter and NFIs	94	26	68
Nutrition	71	16	55
Health	28	6	22
Community Restoration	20	5	14
Protection	16	6	10
WASH	14	10	4
Coordination and Common Services	9	7	2
Education	8	4	4
Camp Coord & Camp Mgmt	1	0	1

Contributions (million US\$)

Contributor	Contribution (million US\$)
United States	86
Govt. of Pakistan	80
EC	29.2
Carry-over	19.1
Japan	19
UN	16.4
UK	14.2
Germany	13.3
CERF	11
Canada	9.6

** Due to changes in context the Food Security Cluster has requested a funding increase to US \$216.9. Please refer to page 22 of the 2015 Pakistan Mid-Year Periodic Monitoring Report for more details.

STRATEGIC OBJECTIVES

Target Reached Logarithmic break

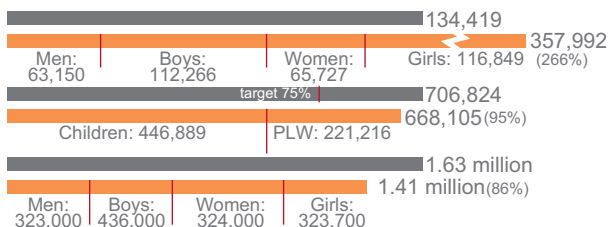
- 1 Reduce morbidity and mortality among the humanitarian caseload including those in displacement and the undernourished to below emergency thresholds.

INDICATOR

Affected population with access to water of appropriate quality for drinking, cooking and maintaining personal hygiene

Percentage of children (6-59 months) and pregnant and lactating women who are cured and discharged from CMAM sites

Number of people receiving nutritious food in-kind or through another modality*



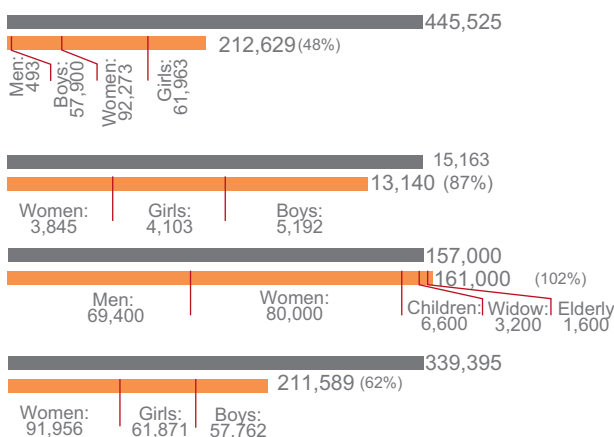
- 2 All humanitarian assistance for the humanitarian caseloads identified in this plan has a protection focus, ensuring inclusion, accountability to the affected population, taking into consideration the particular needs of men, women, boys and girls; the elderly; disabled, and etc.

Number of people with specific needs including girls, boys, women, older people and people with disabilities that receive assistance and protective services

Number of girls, boys and women receiving services through referral systems to address child protection (CP) and gender-based violence (GBV)

Number of men and women receiving support through cash-based interventions to supplement standard food basket and livelihoods restoration

Number of targeted girls, boys and women with safe access to protective spaces



- 3 Support the return of IDPs in the transition from humanitarian to recovery and increase resilience among the vulnerable through targeted interventions.

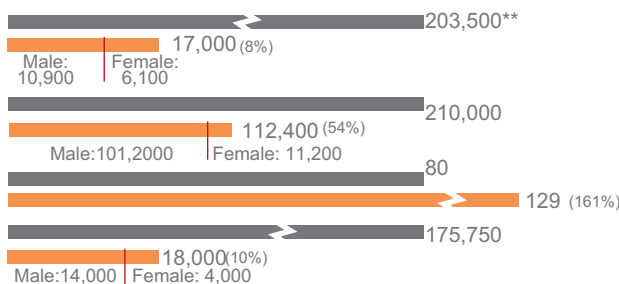
INDICATOR

Number of people receiving livestock or poultry support packages with gender segregation to ensure nutrition and livelihoods

Number of disaggregated returnees receiving agriculture inputs

Number of implemented schemes prioritized by women

Number of disaggregated returnees assisted with cash programming for rehabilitation of agriculture-related infrastructure



- 4 Enhance future emergency responses through strengthened national and sub-national preparedness and response capacity focusing on the hazard-prone districts.

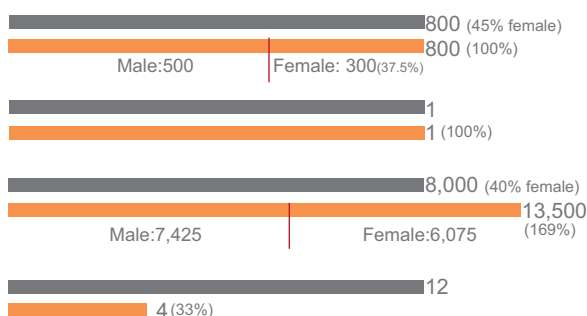
INDICATOR

Number of School Management Committees members trained on emergency preparedness

Interagency preparedness and readiness plan with disaster risk reduction strategies is in place and widely disseminated in support of Government plans

Number of people participating in a community network

Improved Needs and Gaps analysis on food security and livelihood in malnourished districts



* number of people receiving food on a monthly basis per quarter ** target number revised to 100,000 in June