

2.96 BN
REQUIREMENTS
(USD)

0.29 BN
FUNDED
(USD)

2.67 BN
STILL NEEDED
(USD)



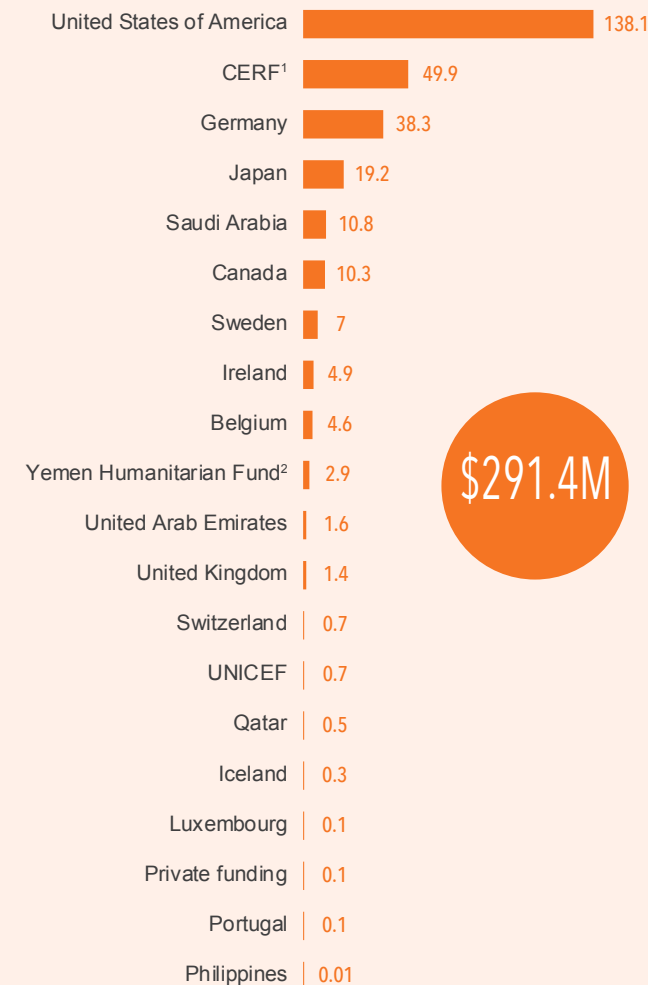
TOTAL FUNDING INSIDE AND OUTSIDE YHRP



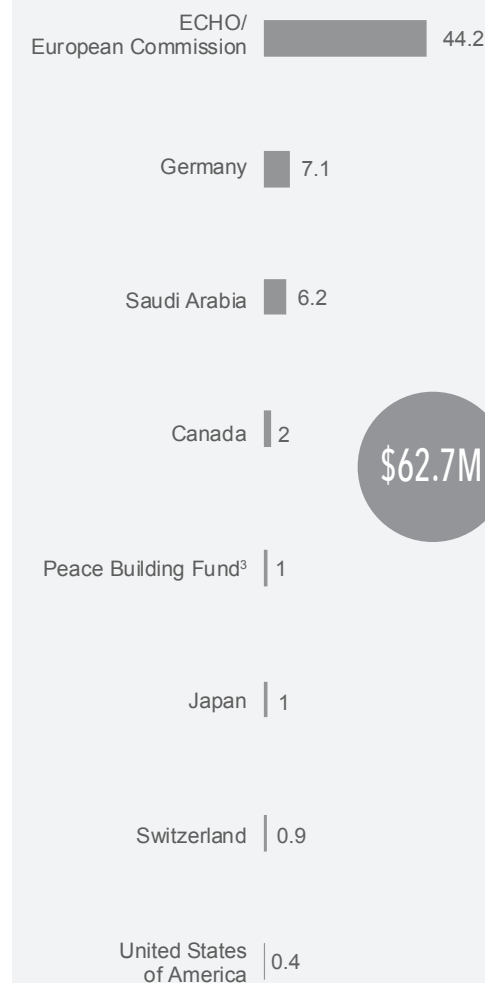
REVISED YEMEN HUMANITARIAN RESPONSE PLAN (YHRP 2017) BY CLUSTER (million \$)

Cluster	Funded	Unmet	Total required
FOOD SECURITY & AGRICULTURE	190.5 (15%)	1,080.2	1,270.7
HEALTH	16.8 (2.9%)	555.7	572.4
WASH ¹	16.7 (5.6%)	282.1	298.8
NUTRITION	3.2 (1.6%)	192.2	195.4
SHELTER/NFIs/CCCM ²	6 (3.1%)	189.3	195.3
REFUGEES & MIGRANTS ³	4.6 (4.3%)	102.2	106.7
PROTECTION	11 (10.6%)	93.1	104.1
EECR ⁴	0.2 (0.2%)	99	99.1
EDUCATION	0.5 (0.9%)	52.9	53.4
LOGISTICS	2 (5.3%)	35.9	37.9
COORDINATION & SAFETY	10.8 (47.2%)	12.1	22.9
ETC ⁵	0 (0%)	2.2	2.2
CLUSTER NOT YET SPECIFIED	7.9	-	-
MULTIPLE CLUSTERS	21.2	-	-

YHRP CONTRIBUTIONS BY DONOR (US\$ million)



OUTSIDE YHRP FUNDING BY DONOR (US\$ million)



1-CERF is global multi-donor emergency response fund managed by the UN (<http://www.unocha.org/cerf/donors/donorspage>)
 2-YHF is a multi-donor humanitarian financing instrument managed by OCHA, under the HC leadership (<https://gms.unocha.org/content/cbpf-contributions>)

3-The Peacebuilding Fund is the Secretary General's Fund managed by Peacebuilding Support Office (PBSO) (<http://www.unpbf.org/who-we-are/>)

¹Water, Sanitation and Hygiene; ² Non-Food Items/Camp Coordination and Camp Management; ³ Refugees & Migrants Multi-sector; ⁴ Emergency Employment and Community Rehabilitation; ⁵ Emergency Telecommunications.