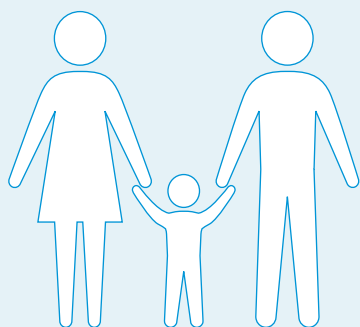


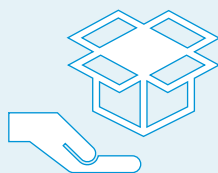
2.88MILLION

affected population in Regions IV-A, IV-B, V and VIII



368

displaced population being served by the Department of Social Welfare and Development (DSWD) at



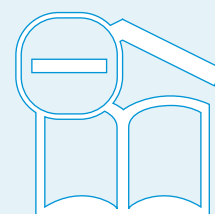
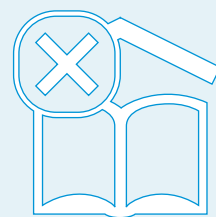
6

evacuation centres

IN REGION V (BICOL REGION)

1,548

totally damaged classrooms



3,797

partially damaged classrooms

393,400

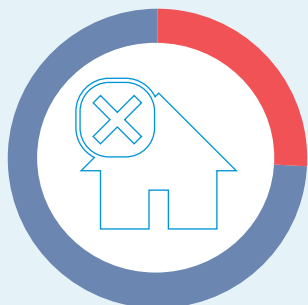
damaged houses

USD 21.1 MILLION

estimate cost of infrastructure damage

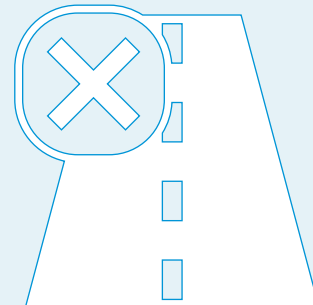
294,400

partially damaged houses



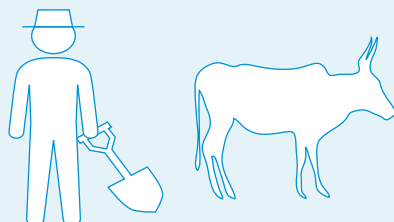
98,900

totally damaged houses



17

local government units declared state of calamity

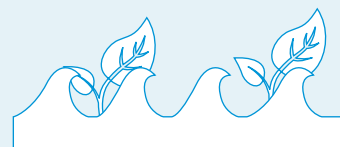


138,300 hectares

damaged agricultural land

125,500

affected farmers



194,900

metric tons of rice, corn and high value crops totalling to USD 90 MILLION were recorded as production losses