

Reported floods by County in 2012 (as of 23 September 2012)

State	Flood affected people reported by assessment teams	Flood affected counties
Jonglei	194,536	10 out of 11
Warrap	8,580 for only Gogrial West & Twic	4 out of 7
Unity	7,909 for only Rubkona	8 out of 9
NBeG	7,202	4 out of 5
CES	-	1 out of 6
WES	3,975	4 out of 10
EES	-	2 out of 8
Lakes	23,700	2 out of 8
Upper Nile	-	3 out of 12
WBeG	-	1 out of 3
Total	245,902	39 out of 79

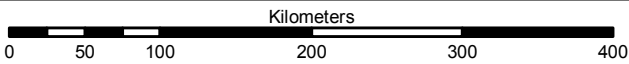
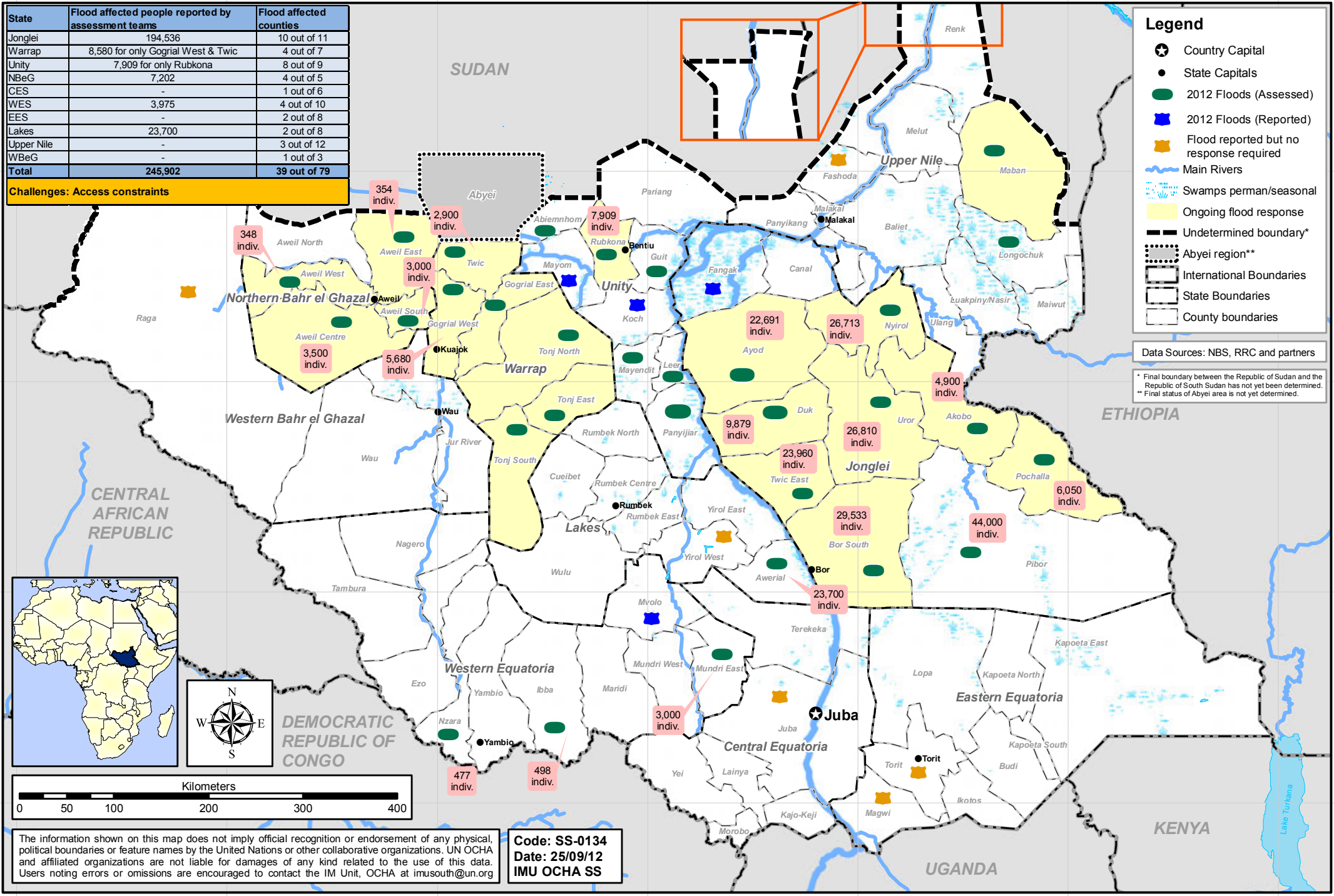
Challenges: Access constraints

Legend

- Country Capital
- State Capitals
- 2012 Floods (Assessed)
- 2012 Floods (Reported)
- Flood reported but no response required
- Main Rivers
- Swamps perman/seasonal
- Ongoing flood response
- Undetermined boundary*
- Abyei region**
- International Boundaries
- State Boundaries
- County boundaries

Data Sources: NBS, RRC and partners

* Final boundary of the Republic of Sudan and the Republic of South Sudan has not yet been determined.
 ** Final status of Abyei area is not yet determined.



The information shown on this map does not imply official recognition or endorsement of any physical, political boundaries or feature names by the United Nations or other collaborative organizations. UN OCHA and affiliated organizations are not liable for damages of any kind related to the use of this data. Users noting errors or omissions are encouraged to contact the IM Unit, OCHA at imusouth@un.org

Code: SS-0134
Date: 25/09/12
IMU OCHA SS