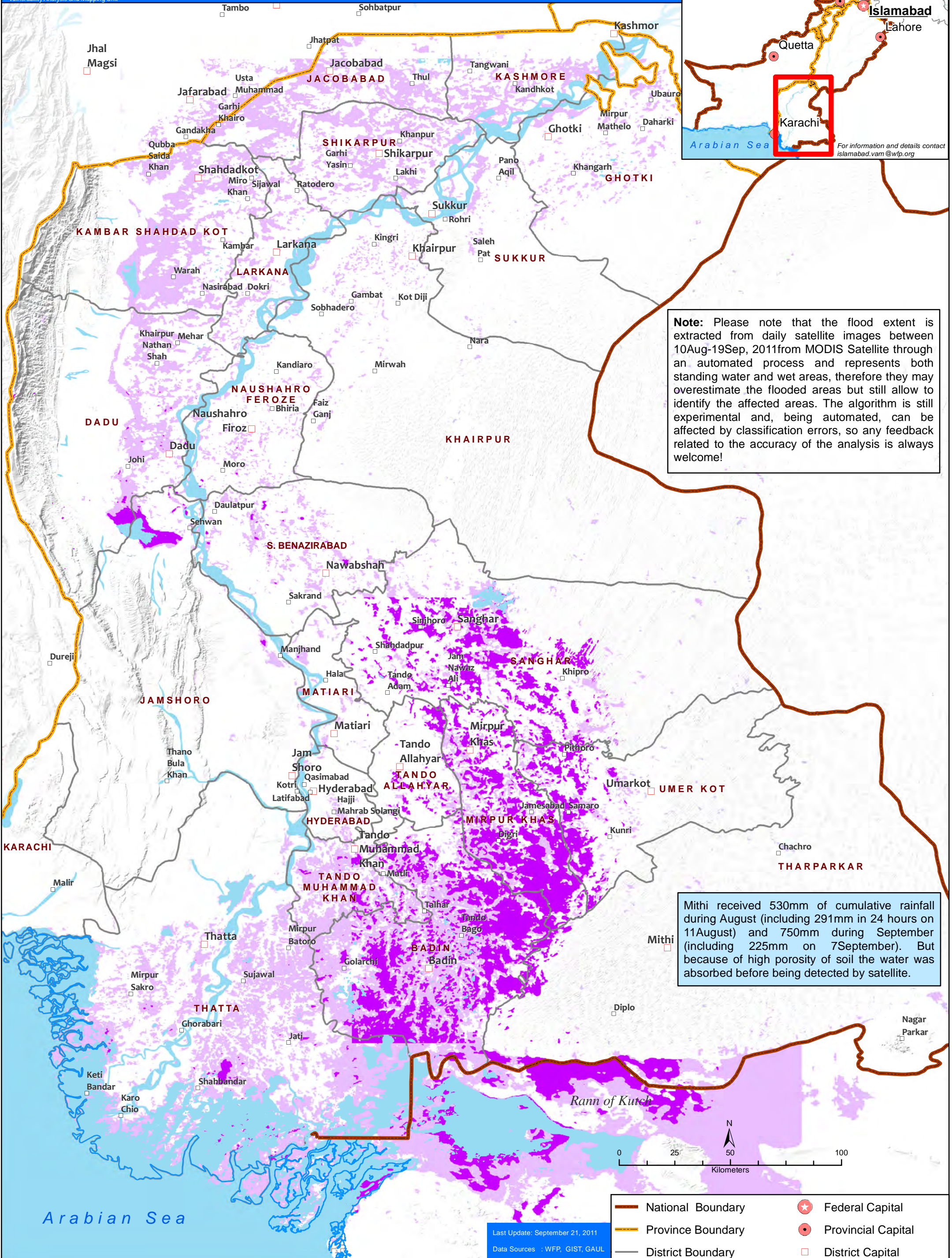
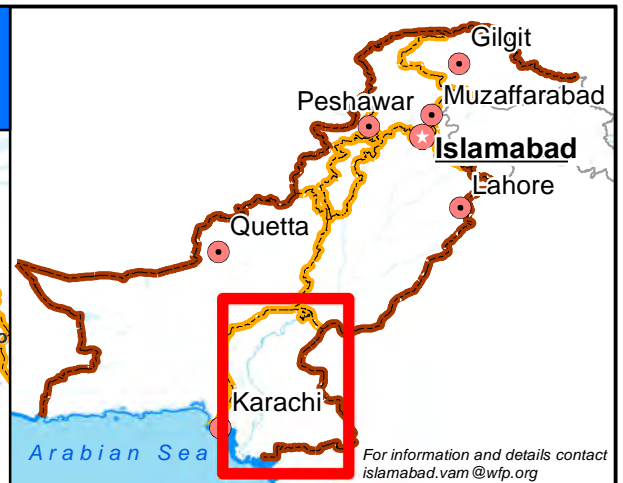


# SINDH - SATELLITE DETECTED RAIN WATER

## 10 AUGUST - 19 SEPTEMBER, 2011



**Note:** Please note that the flood extent is extracted from daily satellite images between 10Aug-19Sep, 2011 from MODIS Satellite through an automated process and represents both standing water and wet areas, therefore they may overestimate the flooded areas but still allow to identify the affected areas. The algorithm is still experimental and, being automated, can be affected by classification errors, so any feedback related to the accuracy of the analysis is always welcome!

Mithi received 530mm of cumulative rainfall during August (including 291mm in 24 hours on 11August) and 750mm during September (including 225mm on 7September). But because of high porosity of soil the water was absorbed before being detected by satellite.

Last Update: September 21, 2011  
Data Sources : WFP, GIST, GAUL

- National Boundary
- Province Boundary
- District Boundary
- Standing Water (19August)
- Flooded Areas
- ★ Federal Capital
- Provincial Capital
- District Capital
- Tehsil Capital
- Rivers/Pre-Flood Water

**Disclaimer:**  
The designation employed and the presentations of material in this publication do not imply the expression of any opinion whatsoever on the part of the World Food Programme (WFP) concerning the legal status of any country, territory, city or area of its frontiers or boundaries.