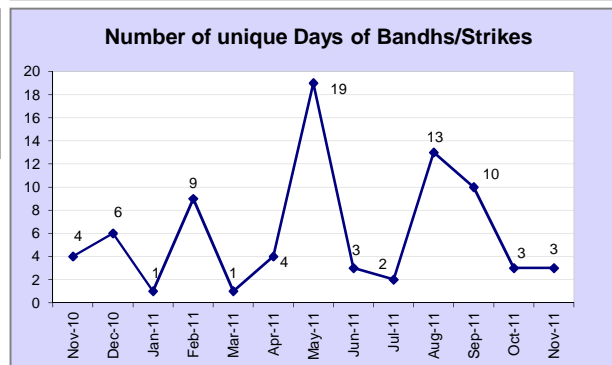
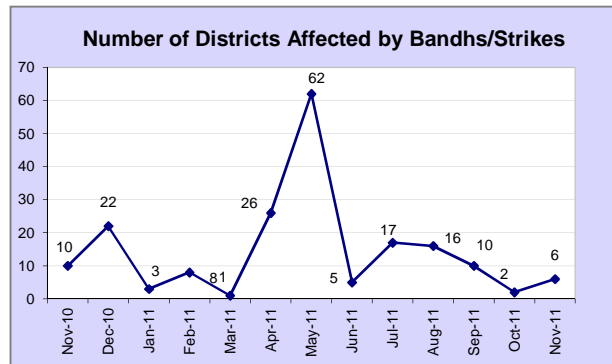
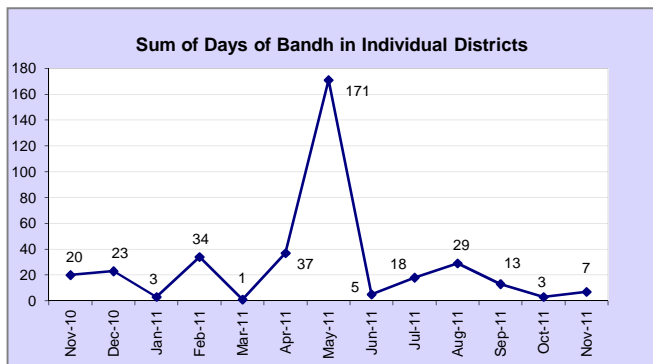
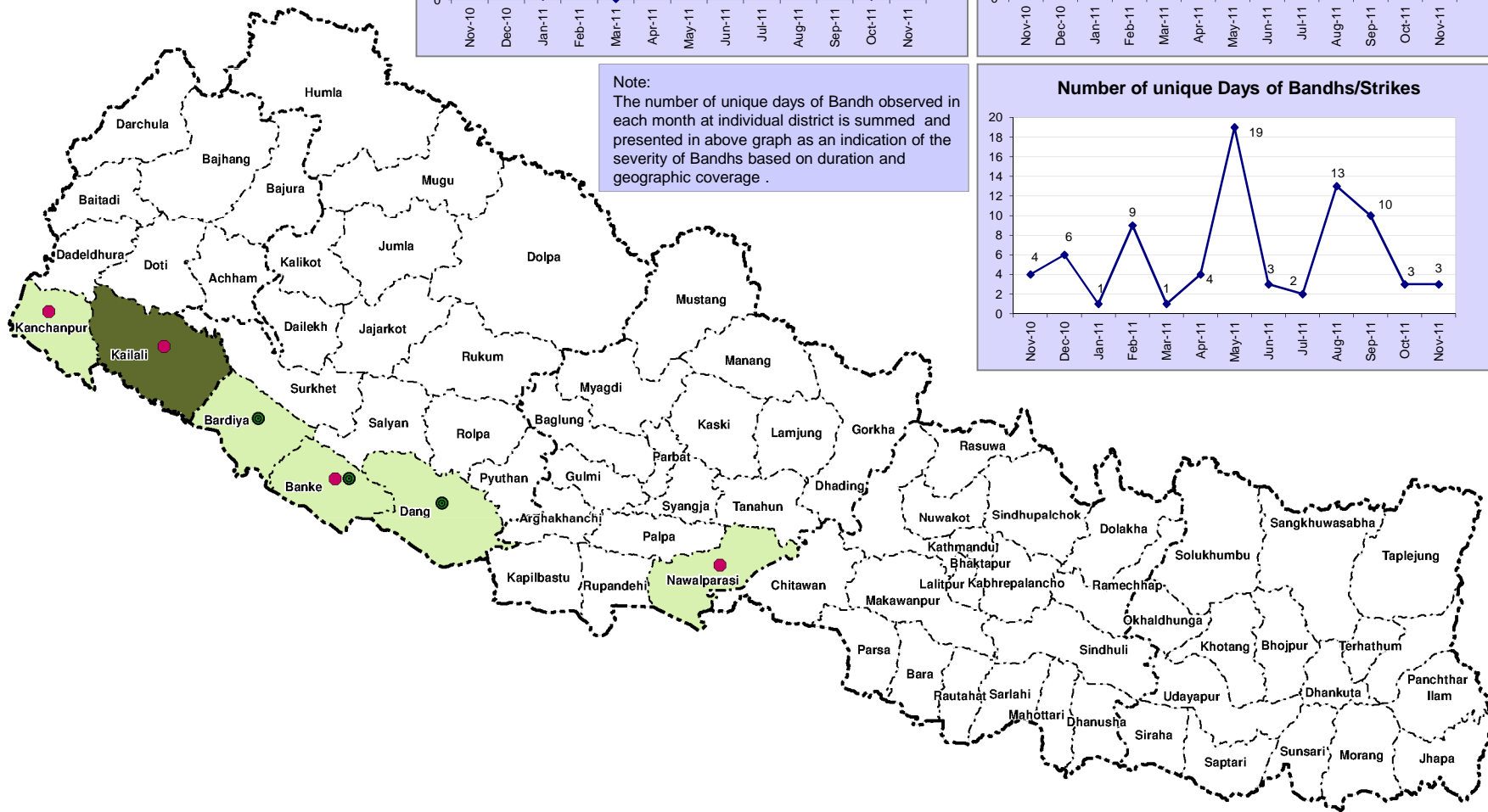


NEPAL - Reports of Bandhs/Strikes

1 - 30 November 2011



Note:
The number of unique days of Bandh observed in each month at individual district is summed and presented in above graph as an indication of the severity of Bandhs based on duration and geographic coverage.



Legend

Administrative Boundaries

- International
- Development Region
- District

Number of Reported Bandh

- 1
- 2
- No incidents reported

Groups Calling for Bandhs/Strikes

- Tharuhat Groups
- Other/Unidentified

Map Produced by RCHCO with information consolidated by UNDSS.

Map Doc Name: BandhStrike_Nov_2011_A4_14Dec2011_v01
GLIDE Number: N/A
Creation Date: 14 December 2011
Projection/Datum: UTM 44N/WGS84
Web Resources: <http://www.un.org.np>

0 50 100 kms

Map data source(s):
International and domestic media and field reports from UN Agencies, Donors and I/NGOs. Geodata: GIST, ESRI

Disclaimers:
The boundaries and names shown and the designations used on this map do not imply official endorsement or acceptance by the United Nations.

A service of the United Nations Country Team in Nepal.
 RCHC Office, Nepal



The density of events – indicated by shading on the map – represents the total number of Bandhs/Strikes that have been observed, as reported to UNRCHCO and the UN Department of Safety and Security. These include transportation strikes, and closures of customs offices, markets and businesses.