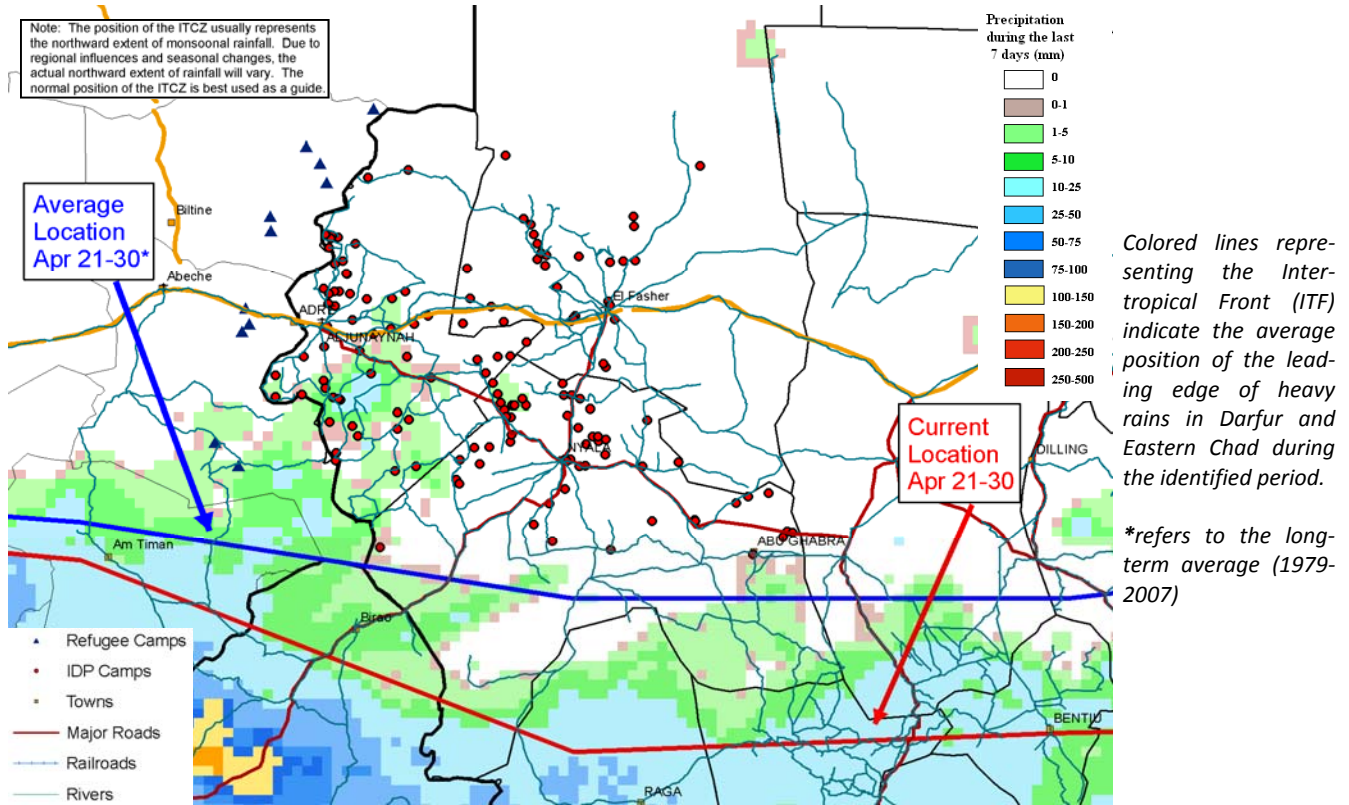


# Darfur Crisis Rain Timeline

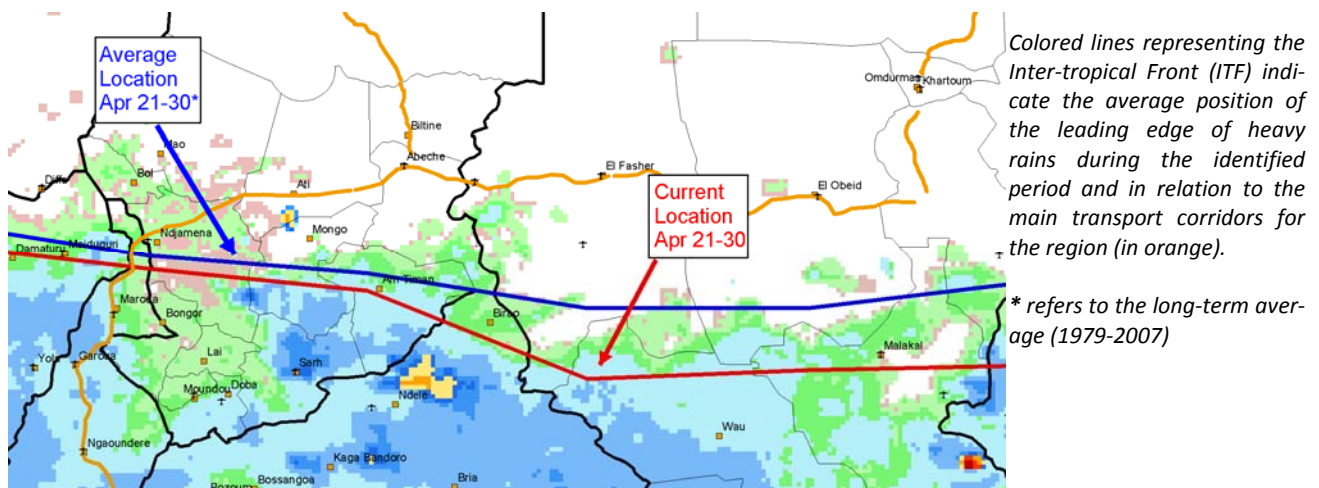
May 6, 2011

## Little rainfall observed across much of Darfur

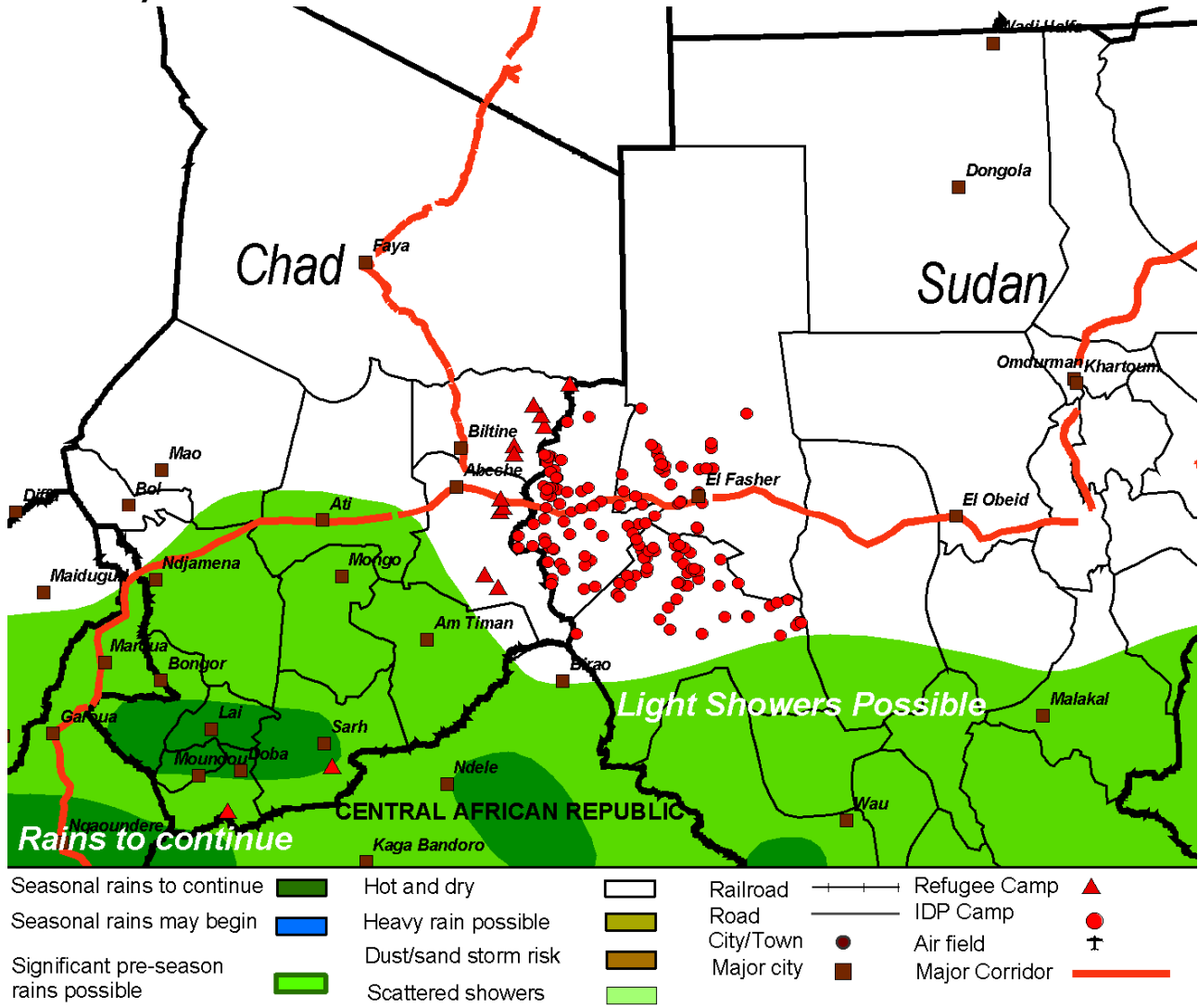


With the Inter-tropical Front (ITF) located to the south, little rainfall was observed across much of Darfur and neighboring Chad. Most IDP and refugee camps located in Darfur and neighboring Chad observed little to no rainfall (< 10 mm) during the past week.

## Regional Overview: Transport Corridors



Seven-day rainfall forecast for Darfur



Up-to-date forecasts are available at: <http://www.cpc.ncep.noaa.gov/products/fews/africa/>

- At the start of the season, little to no rainfall is forecast over much of Darfur and neighboring Chad as the Intertropical Front (ITF) is expected to be located south of the area.
- Little to no rainfall (< 5 mm) is forecast over most IDP and refugee camps in Darfur and neighboring Chad. Only localized areas in southern Chad might receive moderate rainfall (10-20 mm).

Typical Darfur road conditions during the rainy season

