



TROPICAL STORM

EVENT INFO



Max windspeed: 74.1 km/h

Max. Storm Surge: 0.81 m.

Current Coordinates: Lat: 16.3 Lon: 120.8

Warning ref.: JTWC - Bulletin #31

PEOPLE LIVING IN AREAS AT RISK

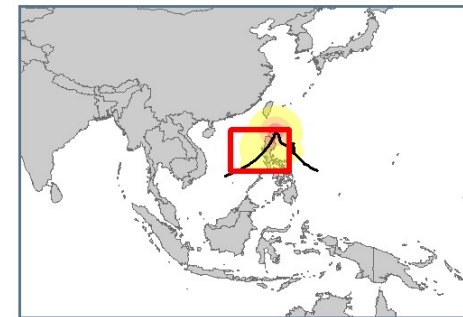


(All Countries Considered)

120 km/h windspeed 2,296,617

90 km/h windspeed 10,779,290

60 km/h windspeed 46,169,089



STORM CLASSIFICATION

Tropical storm



WORLD FOOD PROGRAMME PRESENCE

CLOSEST FACILITIES

- Manila Country Office (PHL): 195 km on
- Cebu Logistics Hub (PHL): 560 km on 13/11 at 18:00
- Iligan Sub Office (PHL): 705 km on 13/11 at 18:00
- Cotabato Sub Office (PHL): 794 km on 13/11 at 06:00
- Phnom Penh Country Office (KHM): 882 km on 22/11 at 06:00

CLOSEST HUMANITARIAN RESPONSE DEPOT

Subang Airport - Kuala Lumpur (MYS): 1537 km on 22/11 at 06:00

Automatically generated alert powered by:

ADAM - Automated Disaster Analysis and Mapping

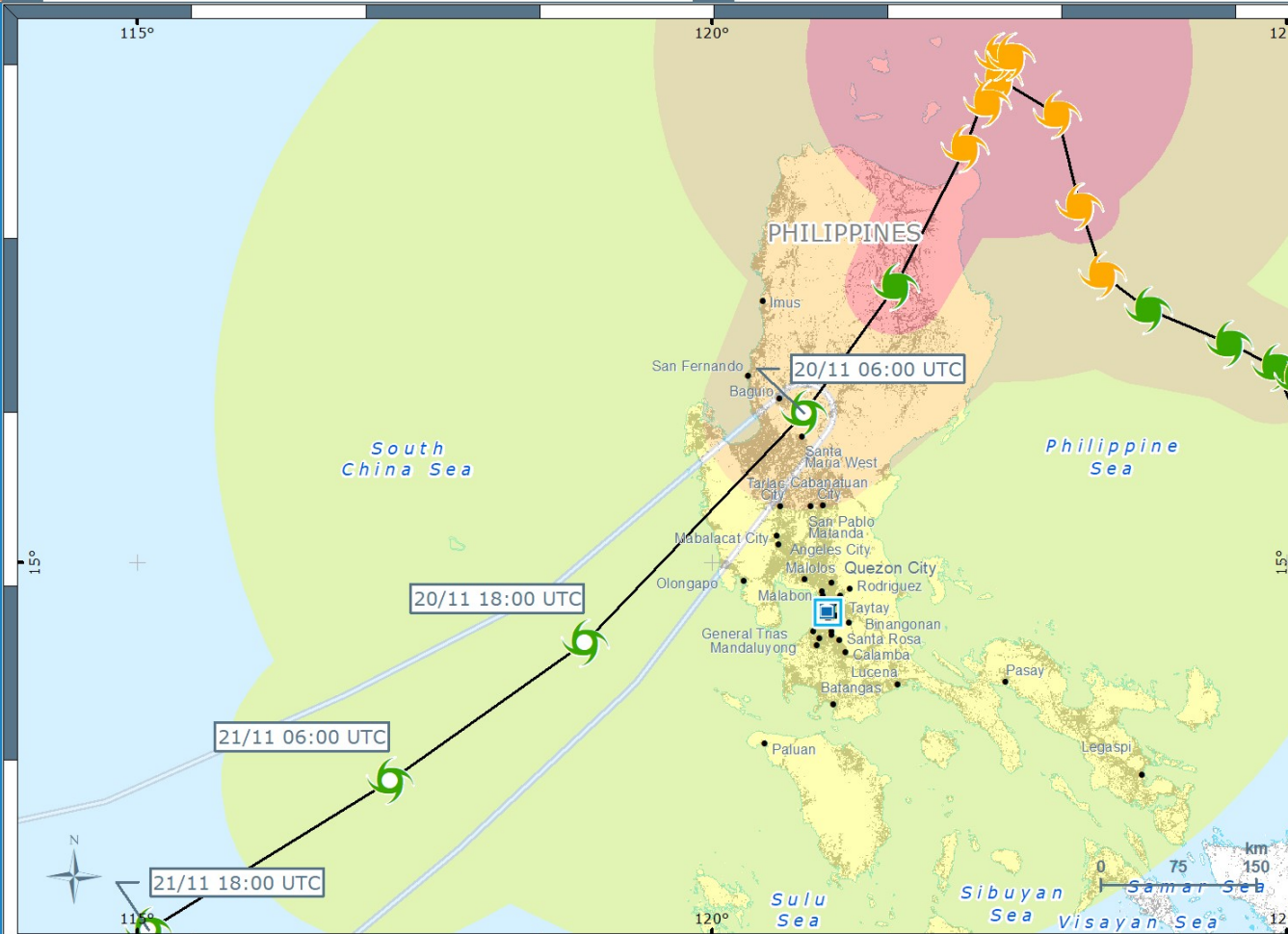
20 November 2019 | 09:16:21 GMT

A collaboration with JRC



Follow alerts via Twitter: @wfp_adam

Tropical Cyclone KALMAEGI



- WFP Facilities
- Country Office
 - Sub Office
 - Warehouse

- Wind buffers
- 120 km/h
 - 90 km/h
 - 60 km/h
 - Uncertainty

- Wind speed
- < 110 km/h
 - 110 - 185 km/h
 - 185 - 240 km/h
 - > 240 km/h

- Wind speed (forecast)
- < 110 km/h
 - 110 - 185 km/h
 - 185 - 240 km/h
 - > 240 km/h

- National Capital
- Major Town
- Intermediate Town
- Densely Populated Area

Please report errors to hq.gis@wfp.org. Event ID: 1000630_31. Coordinate system: GCS WGS 1984. Sources: GDACS, Landsat 2015, GAUL, WFP, ESRI. The designations employed and the presentation of material in this map do not imply the expression of any opinion whatsoever of WFP concerning the legal or constitutional status of any country, territory or sea area, or concerning the delimitation of frontiers.

