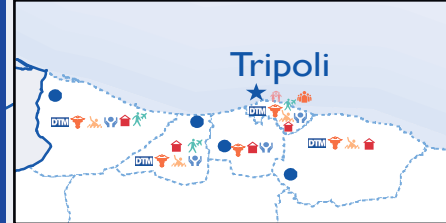
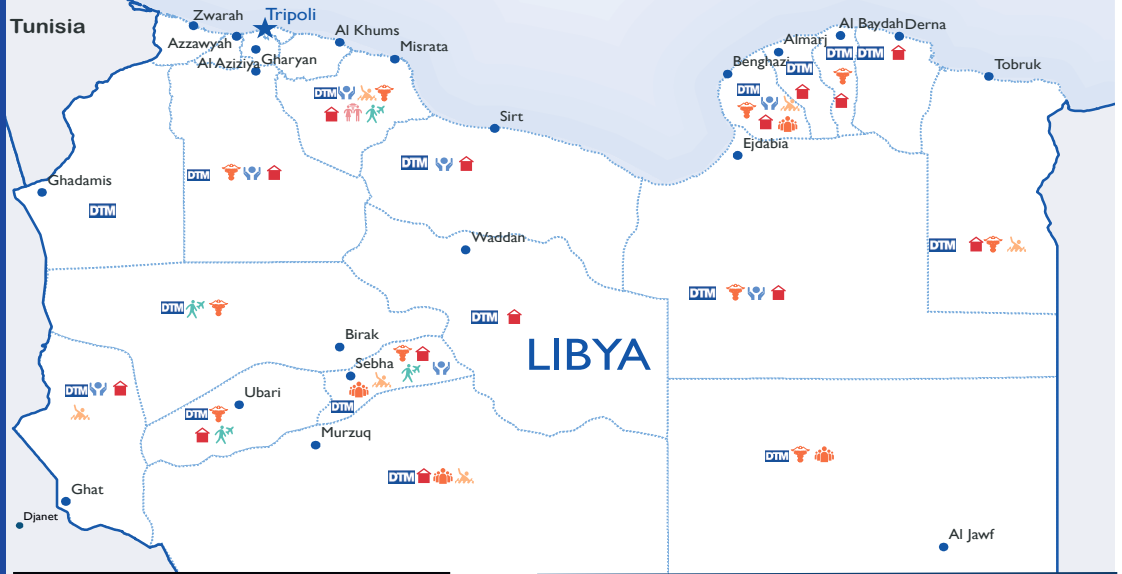




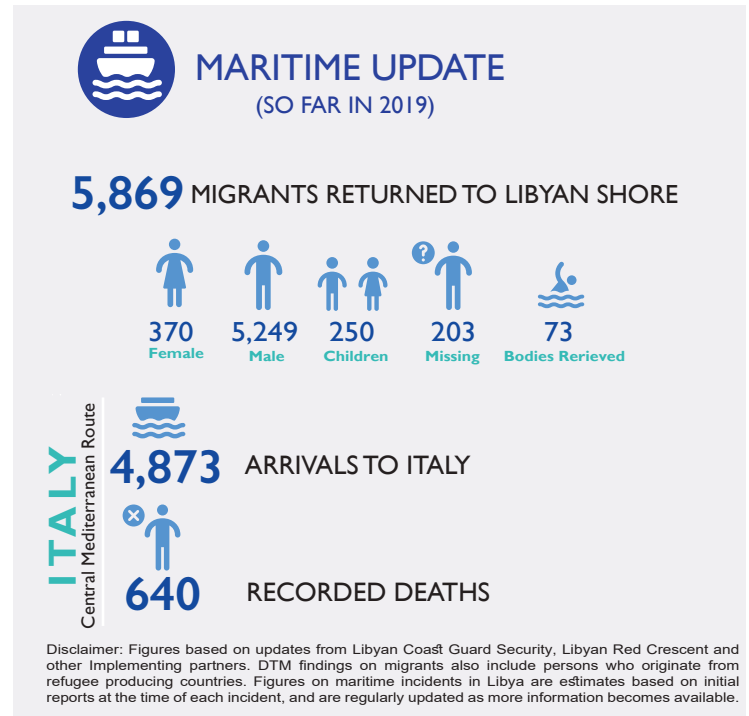
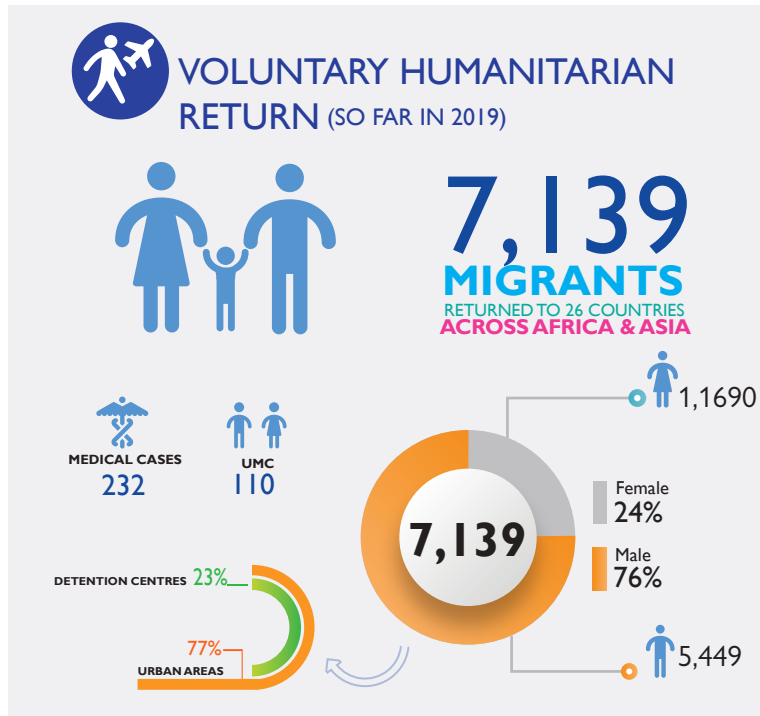
IOM LIBYA UPDATE

16-31 August
2019



IOM LIBYA ACTIVITIES REACH

- PROTECTION ASSISTANCE TO VULNERABLE INDIVIDUALS
- TECHNICAL COOPERATION
- VOLUNTARY HUMANITARIAN RETURN ASSISTANCE
- COMMUNITY STABILIZATION
- HEALTH ASSISTANCE
- HUMANITARIAN DIRECT ASSISTANCE
- DISPLACEMENT TRACKING-MATRIX (DTM)
- MENTAL HEALTH & PSYCHOSOCIAL SUPPORT



ASSISTANCE TO MIGRANT AND LIBYAN COMMUNITIES

- The **Community Stabilisation** team kicked off a professional development program on 19 August for teachers from three African community schools. The program will last for 2 months and will reach 24 teachers, aiming to improve education for more than 550 students.
- The **Protection** team carried out 30 protection assessments (19 male and 11 female), including 28 vulnerability assessments and 2 child protection assessments. In this period, 43 outreach visits were conducted at urban areas and detention centres. The Alternatives to Detention programme assisted 11 individual cases and 1 family, from several countries of origins, with housing in host families.
- The **Health** unit provided 949 migrants with primary and urgent health care, as well as 376 IDPs and host community members. The team conducted an immunization campaign for 24 child detainees. Additionally, 2 training workshops were organized for 37 staff from the Minis-
- Different IOM Libya teams assisted migrants rescued by the Libyan Coast Guard (LCG) upon disembarkation, namely Health, Direct Assistance and Protection teams, whilst the Technical Cooperation unit facilitated the coordination between LCG and all other units.
- IOM **DTM** teams across Libya continue to track displacement and provide regular updates that are pivotal in planning the humanitarian response to all affected populations.

SINCE THE BEGINNING OF THE CLASHES IN TRIPOLI (as of 30 July)



110,000

Migrants are in urban areas in Tripoli



4,754

Migrants are in detention centres



119,925

Individuals displaced from south Tripoli due to ongoing clashes

Round 25



IDPs

268,629



RETURNEES

444,760



9% Minors

Round 25



MIGRANTS

641,398



91% Adults



87% Men



13% Women