



**India Meteorological Department
Earth System Science Organisation
(Ministry of Earth Sciences)**

BULLETIN NO. : 59 (ARB/01/2019)

TIME OF ISSUE: 1900 HOURS IST

DATED: 17.06.2019

FROM: INDIA METEOROLOGICAL DEPARTMENT (FAX NO. 24643965/24699216/24623220)

TO: CONTROL ROOM, (NORTH BLOCK) MINISTRY OF HOME AFFAIRS (FAX.NO. 23092398/23093750)

CONTROL ROOM (NERC) DM DIVISION MHA (FAX . NO. 23438254)

CONTROL ROOM NDMA (FAX.NO. 26701729)

CABINET SECRETARIAT (FAX.NO.23012284, 23018638)

PS TO HON'BLE MINISTER FOR S & T AND EARTH SCIENCES (FAX NO.23316745)

SECRETARY, MOES, (FAX NO. 24629777)

H.Q. (INTEGRATED DEFENCE STAFF AND CDS) (FAX NO. 23005137/23005147)

DIRECTOR GENERAL, DOORDARSHAN (23114964)

DIRECTOR GENERAL, AIR (23421101, 23421105, 23421219)

PIB MOES (FAX NO. 23389042)

UNI (FAX NO. 23355841)

D.G. NATIONAL DISASTER RESPONSE FORCE (NDRF) (FAX NO. 26105912, 23438091)

DIRECTOR, PUNCTUALITY, INDIAN RAILWAYS (FAX NO. 23388503)

ADMINISTRATOR, LAKSHADWEEP ISLANDS (FAX NO. 04896262184)

ADMINISTRATOR, UNION TERRITORY OF DAMAN & DIU AND DADRA NAGAR HAVELI (0260-2230775)

CHIEF SECRETARY, KARNATAKA (FAX NO. 080-22258913)

CHIEF SECRETARY, GOA (FAX NO. 0832-2415201)

CHIEF SECRETARY, MAHARASHTRA (FAX NO. 022- 22028594)

CHIEF SECRETARY, GUJARAT (FAX NO. 079-23250305)

Sub: Depression over Northeast Arabian Sea & neighbourhood

The **Depression** over northeast Arabian Sea & neighbourhood moved east-northeastwards with a speed of about 16 kmph in last six hours and lay centred at 1730 hrs IST of 17th June, 2019 near latitude 22.5°N and longitude 67.8°E over Northeast Arabian Sea & neighbourhood, about 135 km west-southwest of Naliya (Gujarat), 130 km west-southwest of Dwarka (Gujarat) and 220 km west-southwest of Bhuj (Gujarat).

The system is very likely to weaken into a well marked low pressure area during next six hours and move towards north Gujarat coast.

Warnings:

(i) Heavy rainfall warning:

Sub-Divisions	17 June 2019*	18 June 2019*
Saurashtra & Kutch	Rainfall at many places with heavy to very heavy falls at isolated places	Rainfall at many places with heavy falls at isolated places
North Gujarat region	Rainfall at many places with heavy falls at isolated places	Rainfall at many places with heavy falls at isolated places
South Rajasthan	NIL	Rainfall at many places with heavy falls at isolated places

Note: * Rainfall till 0830 IST of next day.

Legends: Yellow: Be Updated; Orange- Be prepared; Green: No warning

Heavy rain: 64.5-115.5 mm/day; Very heavy rain: 115.6-204.4 mm/day

(ii) Wind warning

- Squally wind speed of the order **40-50 kmph gusting to 60 kmph** is very likely to prevail over northeast Arabian Sea & neighbourhood during next six hours and decrease gradually thereafter. Strong wind speed of the order of **25-35 kmph gusting to 45 kmph** very likely along & off Gujarat coast on 17th June.

Spatial rainfall distribution: Isolated: <25%, A few: 26-50%, Many: 51-75%, Most: 76-100%

Rainfall amount (mm): Heavy rain: 64.5 – 115.5, Very heavy rain: 115.6 – 204.4, Extremely heavy rain: 204.5 or more.

(iii) Sea condition

- The Sea condition is very likely to be rough to very rough over northeast Arabian Sea and along & off Gujarat coast on 17th June, 2019.

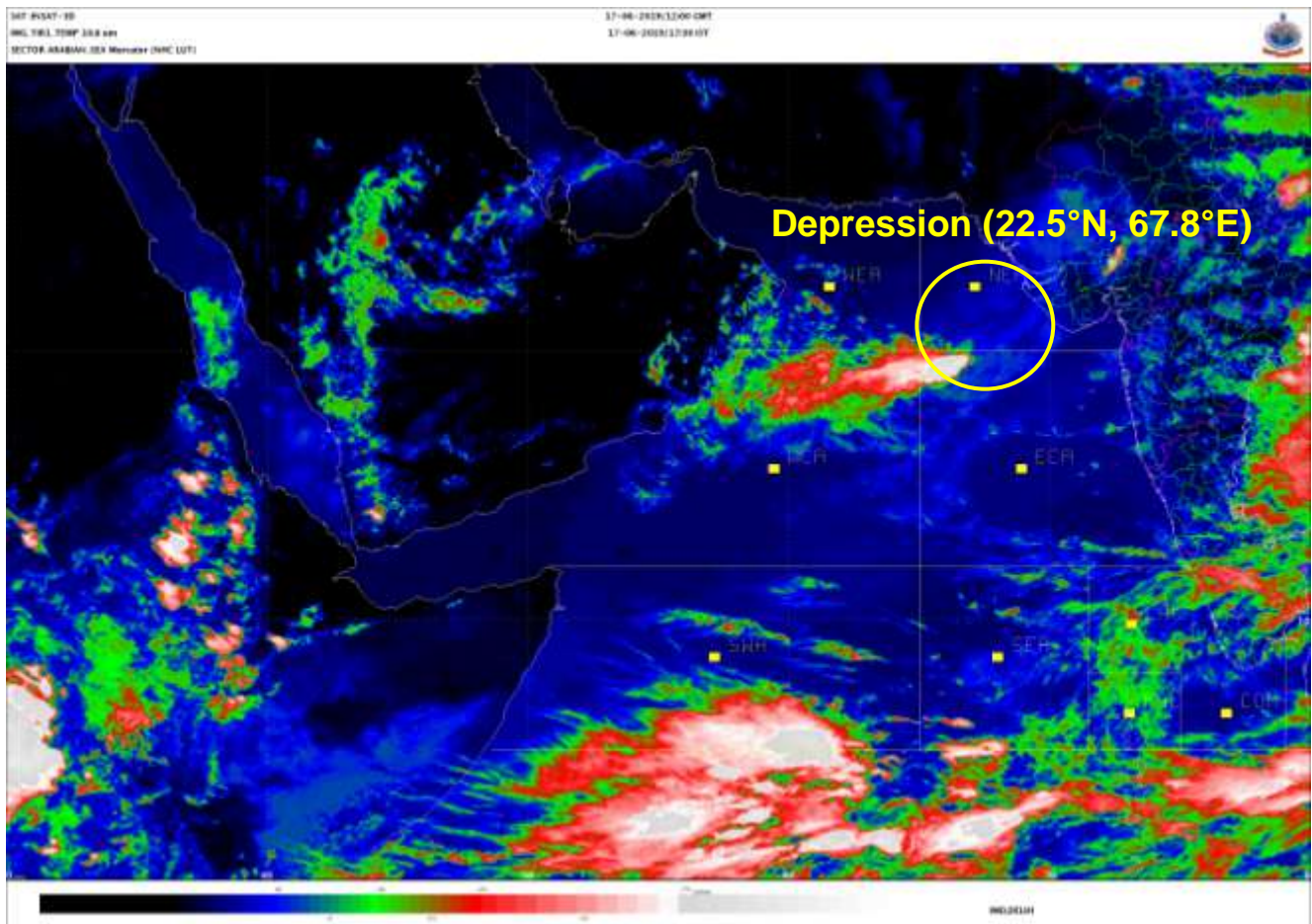
(iv) Fishermen Warning

- The fishermen are advised not to venture into north Arabian Sea, northern parts of central Arabian Sea and along & off Gujarat coast during next 24 hours.

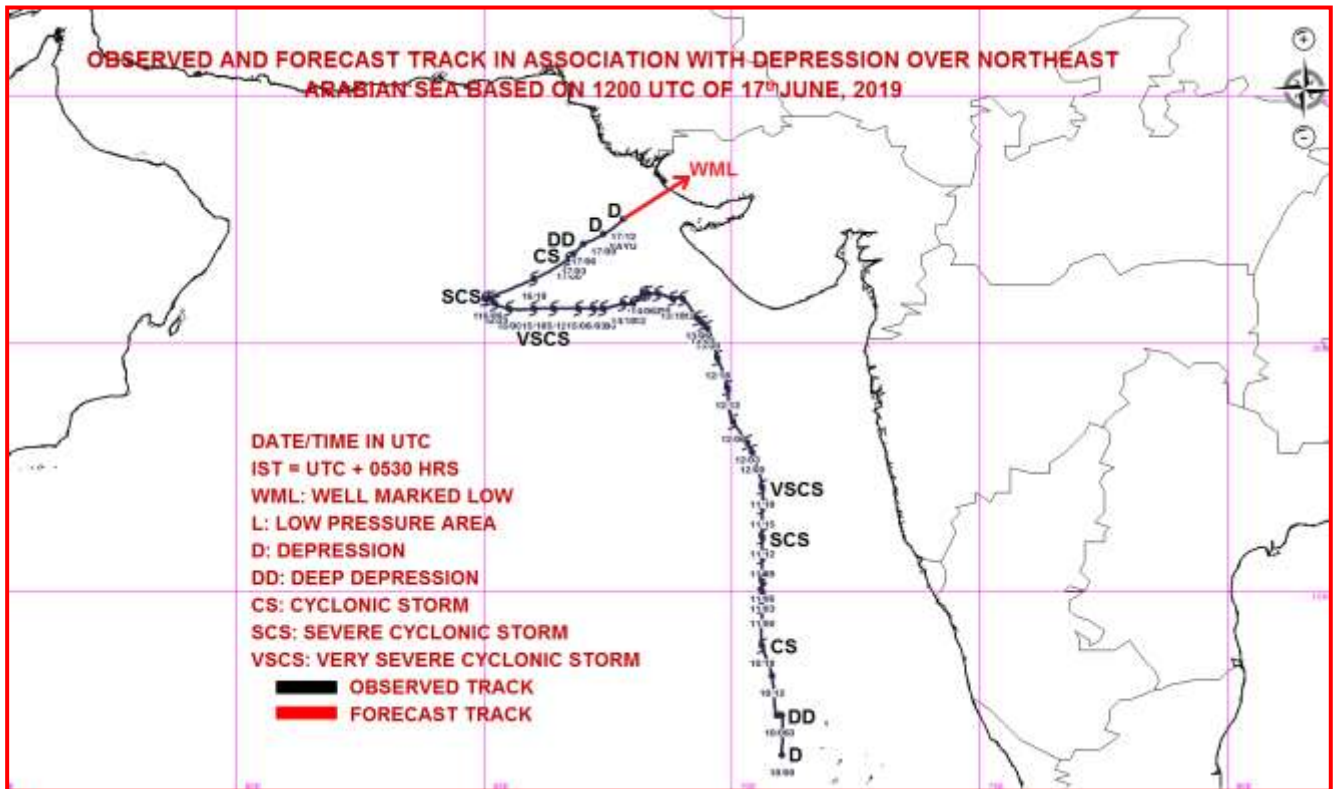
The next bulletin will be issued at 0230 hrs IST of 18th June, 2019.

(Naresh Kumar)
Scientist-E, RSMC, New Delhi

Copy to: CRS, Pune/ ACWC Chennai/ ACWC Mumbai/MC Goa/ MC Bengaluru/CWC Ahmedabad/Thiruvananthapuram.



Spatial rainfall distribution: Isolated: <25%, A few: 26-50%, Many: 51-75%, Most: 76-100%
Rainfall amount (mm): Heavy rain: 64.5 – 115.5, Very heavy rain: 115.6 – 204.4, Extremely heavy rain: 204.5 or more.



Spatial rainfall distribution: Isolated: <25%, A few: 26-50%, Many: 51-75%, Most: 76-100%
Rainfall amount (mm): Heavy rain: 64.5 – 115.5, Very heavy rain: 115.6 – 204.4, Extremely heavy rain: 204.5 or more.