



Australian Government
Department of Immigration
and Border Protection



Australian
BORDER FORCE

Immigration Detention and Community Statistics Summary

31 October 2017

Table of Contents

Immigration Detention and Community Statistics Summary.....	1
About this report.....	3
Enquiries	3
Acronyms	3
Immigration Detention And Community Statistics Summary	4
In Community under Residence Determination Population By State/Territory.....	5
Immigration Detention Population	6
From 1990 to 31 October 2017	6
People In Immigration Detention Facilities.....	7
Arrival Type.....	7
People In Immigration Detention.....	8
Nationality	8
Children In Immigration Detention.....	9
Time In Immigration Detention Facilities	11
Time In Community Under Residence Determination.....	12

About this report

This report provides an overview of the number of people in immigration detention and Regional Processing Centres as at midnight on the date of the report. The report is produced on a monthly basis.

Data is sourced from several departmental processing and recording systems. Data relating to the immigration detention population is dynamic and there can be delays in transmission of information from the department's immigration detention network operations. Variations in figures between this report and previous issues can occur. Due to these issues, data from the current financial year should always be considered provisional.

Further information about immigration detention is available at:

<http://www.border.gov.au/about/immigration-detention-in-australia>

Enquiries

Comments or enquiries concerning this report should be sent using the department's client service feedback form quoting the name and date of the report.

See: <http://www.border.gov.au/about/contact/make-enquiry/enquiries-and-feedback>

Acronyms

Table 1 – Acronyms used in this document

Acronym	Description
APOD	Alternative Place of Detention
IMA	Illegal Maritime Arrival
IDC/F	Immigration Detention Centre/Facility
IRH	Immigration Residential Housing
ITA	Immigration Transit Accommodation
RPC	Regional Processing Centre
S501	Section 501 of the Migration ACT
S501 Visa Cancellation	Visa cancellations based on character or related grounds

Immigration Detention And Community Statistics Summary

At 31 October 2017, there were 1264 people in immigration detention facilities, including 950 in immigration detention on the mainland and 314 in immigration detention on Christmas Island.

A further 459 people were living in the community after being approved for a residence determination and 20,355 were living in the community after grant of a Bridging Visa E.

The table below reflects figures based on records in Department of Immigration and Border Protection systems.

Table 2 – People in Immigration Detention Facilities (IDFs), Alternative Places of Detention (APODs), Regional Processing Centres (RPCs) and the Community at 31 October 2017

Place of immigration detention	Men	Women	Children	Total	Change from Previous Summary 30/09/17
Christmas Island IDC	314	0	0	314	- 14
Maribyrnong IDC	88	11	0	99	+ 17
Perth IDC	14	6	0	20	- 2
Villawood IDC	401	45	0	446	+ 2
Yongah Hill IDC	206	<5	0	207	+ 5
Mainland APODs	24	<5	<5	29	+ 18
Total IDCs/APODs	1,047	66	<5	1,115	+ 26
Adelaide ITA	19	<5	0	23	+ 6
Brisbane ITA	43	7	0	50	- 2
Melbourne ITA	69	7	0	76	- 23
Total in ITA	131	18	0	149	- 19
Total in IDC/F	1,178	84	<5	1,264	+ 7

Total in Community under Residence Determination	139	140	180	459	- 33
---	------------	------------	------------	------------	-------------

Total IMA in Community on Bridging Visa E (Including people in a re-grant process)	14,158	2,659	3,538	20,355	- 244
---	---------------	--------------	--------------	---------------	--------------

Republic of Nauru (RPC)	267	39	39	345	- 24
Manus Province, Papua New Guinea (RPC)	690	0	0	690	- 52
Total IMA in RPCs	957	39	39	1,035	- 76

Detention Group	Men	Women	Children	Total	Change from Previous Summary 30/09/17
S501 Visa Cancellation	449	13	0	462	+ 16
Illegal Maritime Arrival	317	7	0	324	- 5
Other	412	64	<5	478	- 4
Total	1,178	84	<5	1,264	+ 7

In Community under Residence Determination Population By State/Territory

Of the 459 people approved for a residence determination to live in the community, 35.5 per cent were in Victoria, 27.7 per cent in Queensland, 23.1 per cent in New South Wales, 7 per cent in Western Australia and 6.8 per cent in South Australia.

Table 3 – People in the Community under Residence Determination by State/Territory at 31 October 2017

State/Territory	Adult Male	Adult Female	Child Male (<18 years)	Child Female (<18 years)	Total
Victoria	53	48	36	26	163
Queensland	36	34	36	21	127
New South Wales	26	40	23	17	106
Western Australia	15	9	5	<5	32
South Australia	9	9	<5	9	31
Total	139	140	104	76	459

Immigration Detention Population

From 1990 to 31 October 2017

The overall number of people in immigration detention including in the community under residence determination has decreased by 237 to 1723 compared with 1960 at the end of October 2016. This decrease takes into account releases of detainees into the community under residence determination and detainees granted Bridging E visas (BVEs) as well as decreases through return and removal activities.

Figure 1 – Population in Immigration Detention

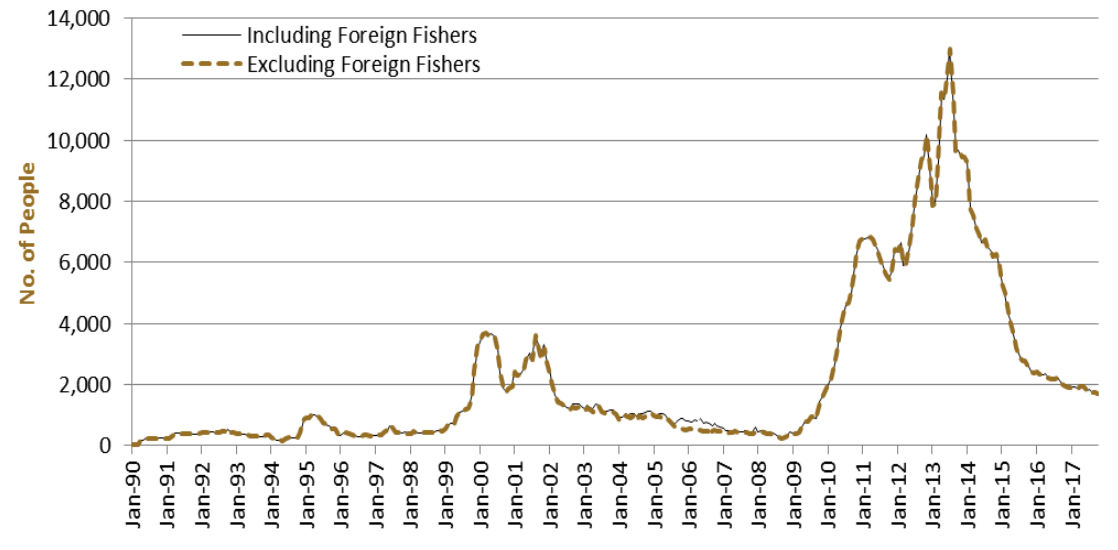


Figure 1 above, shows the number of people in immigration detention from 1990 to the date of this report. The trend had a consistent rise of people in immigration detention from January 2009 to January 2013, but has since had consistent decline.

People In Immigration Detention Facilities

Arrival Type

There were 395 people who arrived unlawfully by air or boat, in held immigration detention facilities at 31 October 2017 representing 31.3 per cent of the total immigration detention population.

There were also 869 people (68.8 per cent of the total immigration population) who arrived in Australia lawfully and were subsequently taken into immigration detention for either overstaying or having their visas cancelled for breaching visa conditions.

Figure 2 – People in Held Immigration Detention Facilities by Detention Group

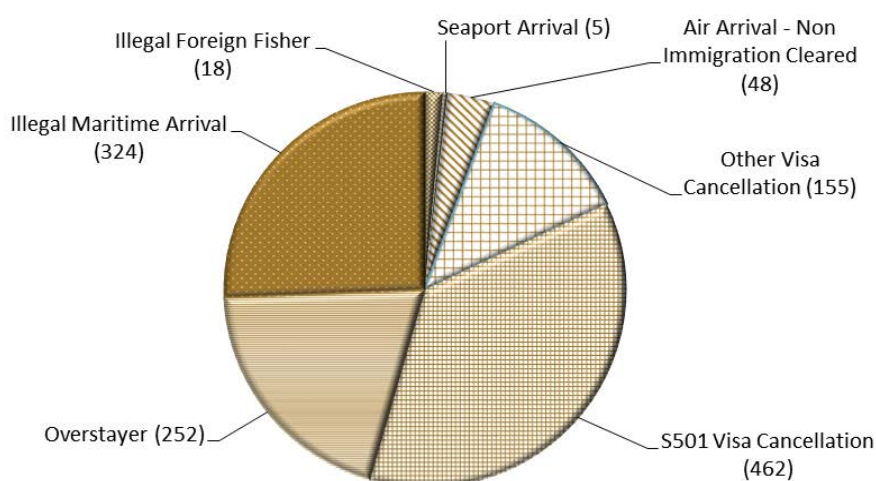


Figure 2 above, shows the number of people in held immigration detention facilities by detention group, including Overstayers, S501 and Other Visa Cancellations, Foreign Fishers, Illegal Maritime Arrivals, Unauthorised Air Arrivals, and if applicable – Inadequately Documented Crew Members and Others such as stowaways and ship deserters.

Table 4 – People in Held Immigration Detention Facilities by Detention Group at 31 October 2017

Place of immigration detention	S501 Visa Cancellation	IMA	Other Detention Group	Total	Change from Previous Summary 30/09/17
Christmas Island IDC	176	83	55	314	- 14
Maribyrnong IDC	31	13	55	99	+ 17
Perth IDC	7	<5	10	20	- 2
Villawood IDC	177	92	177	446	+ 2
Yongah Hill IDC	56	71	80	207	+ 5
Mainland APODs	0	<5	28	29	+ 18
Total IDCs/APODs	447	263	405	1,115	+ 26
Adelaide ITA	<5	7	14	23	+ 6
Brisbane ITA	13	17	20	50	- 2
Melbourne ITA	0	37	39	76	- 23
Total in IRH and ITA	15	61	73	149	- 19
Total in IDC/F	462	324	478	1,264	+ 7

People In Immigration Detention

Nationality

At 31 October 2017, there were 1264 people in held immigration detention facilities. Of these 1264 people, 13.8 per cent were from New Zealand, 7.6 per cent were from Vietnam, 7.4 per cent were from Iran, 7.4 per cent were from Sri Lanka and 5.7 per cent were from China.

Table 5 – People in Held Immigration Detention Facilities by Nationality at 31 October 2017

Nationalities	Adult Male	Adult Female	Child Male (<18 years)	Child Female (<18 years)	Total
New Zealand	163	12	0	0	175
Vietnam	89	7	0	0	96
Iran	92	<5	0	0	94
Sri Lanka	93	<5	0	0	94
China	55	17	0	0	72
United Kingdom	51	<5	0	0	52
India	47	<5	<5	0	49
Malaysia	39	10	0	0	49
Afghanistan	39	0	0	0	39
Iraq	37	<5	0	0	38
Other	473	32	<5	0	506
Total	1,178	84	<5	0	1,264

At 31 October 2017, 459 were people living in the community after being approved for a residence determination. Of these 459 people, 54 per cent were from Iran, 11.1 per cent were from Sri Lanka, 10.2 per cent were Stateless, 3.7 per cent were from Iraq and 3.5 per cent were from Vietnam.

Table 6 – People in the Community under Residence Determination by Nationality at 31 October 2017

Nationalities	Adult Male	Adult Female	Child Male (<18 years)	Child Female (<18 years)	Total
Iran	79	84	47	38	248
Sri Lanka	13	13	17	8	51
Stateless	13	12	10	12	47
Iraq	7	<5	<5	<5	17
Vietnam	<5	<5	5	<5	16
Other	23	23	22	12	80
Total	139	140	104	76	459

Children In Immigration Detention

At 31 October 2017 there were less than five children (aged less than 18 years) in Immigration Residential Housing, Immigration Transit Accommodation and Alternative Places of Detention.

Figure 3 – Children in Immigration Residential Housing, Immigration Transit Accommodation and Alternative Places of Detention

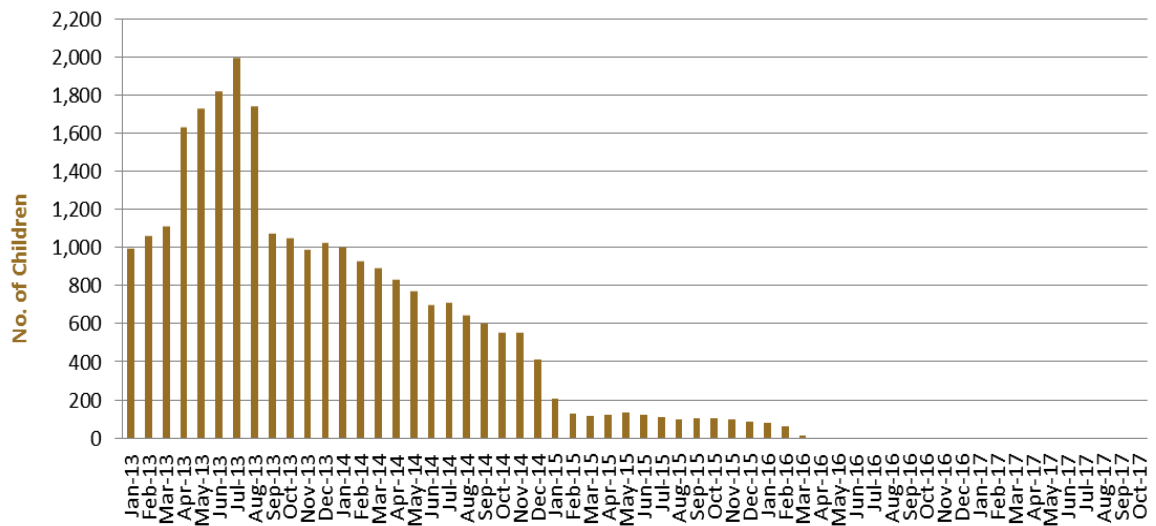


Figure 3 above, shows the number of children in immigration detention facilities and alternative places of detention from January 2013 to the date of this report. The continuous increase in the number of children in detention facilities from April 2013 to August 2013 was due to a rapid increase in illegal maritime arrivals during this period. The number of children in immigration detention facilities reduced in September 2013, as children completed mandatory processing and were transferred into the community. The number of children in detention facilities continued to decline during the late 2013 and 2014, with further reduction in January 2015.

At 31 October 2017, the number of children living in the community after being approved for a residence determination decreased by 20 to 180 from 200 in the previous report.

Figure 4 – Children in the Community under Residence Determination

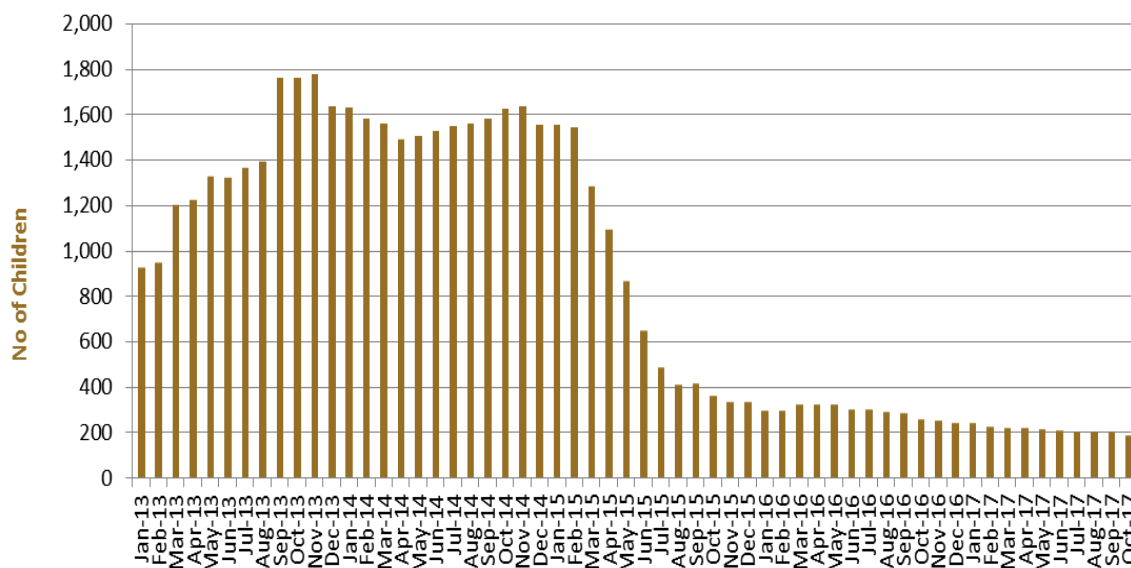


Figure 4 above, shows the number of children in the community under residence determination from January 2012 to the date of this report. The number of children in the community under residence determination, has levelled off at its lowest number since the peak in November 2013, as a result of releases into the community on Bridging E visas.

Table 7 – Children in Immigration Detention and IMA Children in the Community on a Bridging E Visa at 31 October 2017

Placement Type	Children
Immigration Residential Housing	0
Immigration Transit Accommodation	0
Alternative Places of Detention	<5
Total Children in Immigration Detention Facilities	<5
Total Children in the Community under a Residence Determination	180
Total IMA Children in the Community on a Bridging E visa (including in re-grant process)	3,538

Time In Immigration Detention Facilities

At 31 October 2017, there were 1264 people in immigration detention facilities. Of these 1264 people, 37.4 per cent had been detained for 91 days or less and 66.9 per cent had been detained for 365 days or less.

Table 8 – Length of Time of People in Held Immigration Detention Facilities at 31 October 2017

Period Detained	Total	% of Total
7 days or less	95	7.5%
8 days - 31 days	168	13.3%
32 days - 91 days	210	16.6%
92 days - 182 days	183	14.5%
183 days - 365 days	189	15.0%
366 days - 547 days	90	7.1%
548 days - 730 days	62	4.9%
Greater than 730 days	267	21.1%
Total	1,264	100%

At 31 October 2017, the average period of time for people held in detention facilities was 430 days.

Figure 5 – Average Number of Days of People in Held Immigration Detention Facilities only

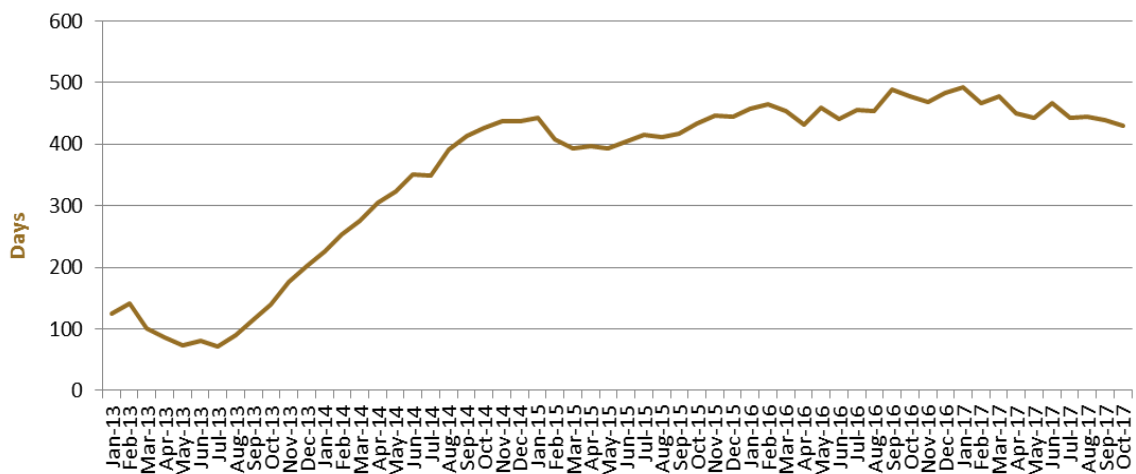


Figure 5 above, shows the average days in held immigration detention at the end of each month from January 2013 to the date of this report. The average period of time for people held in detention facilities steadily increased from July 2013 to January 2015.

Time In Community Under Residence Determination

Of the 459 people in the community under residence determination, as at 31 October 2017, 3.5 per cent had been in the community for 91 days or less and 18.5 per cent had been in the community for 365 days or less.

Table 9 – Length of Time of People in Community under Residence Determination at 31 October 2017

Period Detained	Total	% of Total
7 days or less	<5	0.9%
8 days - 31 days	<5	0.2%
32 days - 91 days	11	2.4%
92 days - 182 days	18	3.9%
183 days - 365 days	51	11.1%
366 days - 547 days	29	6.3%
548 days - 730 days	229	49.9%
Greater than 730 days	116	25.3%
Total	459	100%