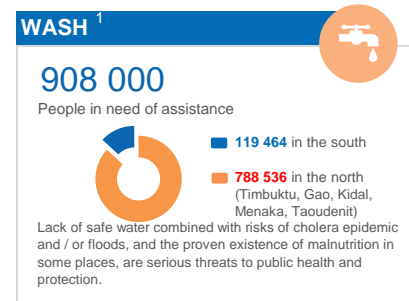
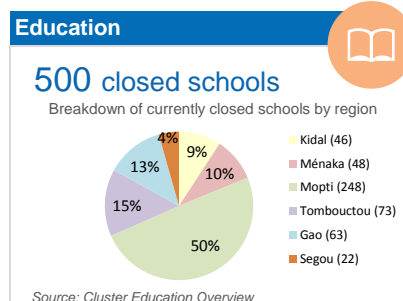
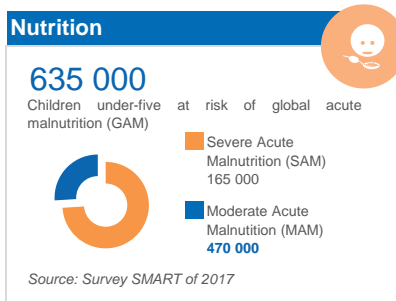
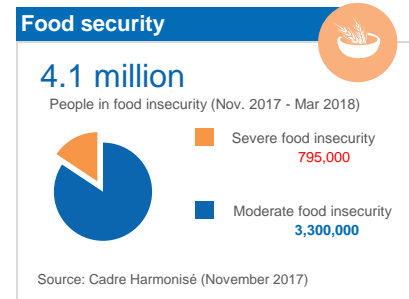
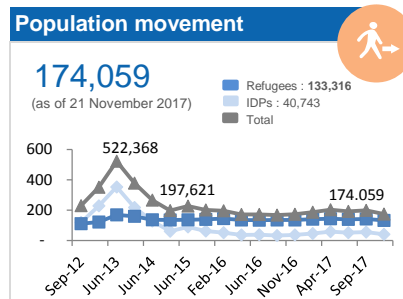
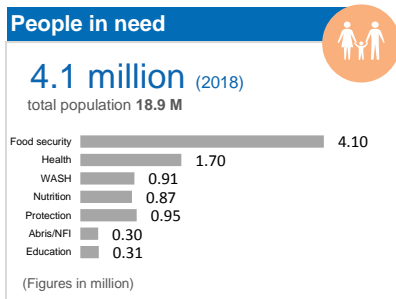


## SITUATION OVERVIEW

The humanitarian situation continues to deteriorate in the north and center of the country as a result of persistent insecurity, clashes between armed groups and defense/security forces, as well as inter-community conflicts and tensions. All this leads to the displacement of people inside the country. Ambient insecurity also negatively affects household livelihoods and limits their access to basic social services. Nearly 4.1 million people are in need of food assistance, including 795,000 people in the severe phase.

## KEY FIGURES



## FUNDING: HUMANITARIAN RESPONSE PLAN 2017 (as of 30 november 2017)

**\$ 305 million**  
REQUESTED (US\$)

**43%**  
FUNDED

**\$ 130.0**  
RECEIVED (US\$)

### Requirements by cluster (million \$)

| Cluster               | Requirements (million \$) | Funded (million \$) | Unmet (million \$) |
|-----------------------|---------------------------|---------------------|--------------------|
| Food security         | 105                       | 48.2                | 57.0               |
| Nutrition             | 58                        | 24.0                | 34.1               |
| Education             | 35                        | 4.9                 | 30.2               |
| Protection            | 31                        | 3.0                 | 27.8               |
| WASH                  | 29                        | 2.0                 | 26.6               |
| Coordination          | 15                        | 9.1                 | 5.7                |
| Shelter & NFI         | 13                        | 2.1                 | 11.0               |
| Health                | 12                        | 3.9                 | 8.0                |
| Early Recovery        | 7                         | 0.0                 | 7.3                |
| Cluster not specified |                           | 32.8                |                    |

### Percent funded by cluster

### Contributions (million \$)

CERF: US\$ 6.9 million 5% of contributions

|         |      |
|---------|------|
| USA     | 30.7 |
| ECHO    | 25.2 |
| WFP     | 24.4 |
| Germany | 15.2 |
| CERF    | 6.9  |
| Sweden  | 5.9  |
| Denmark | 2.9  |
| Canada  | 2.7  |
| Mali    | 2.3  |
| Others  | 12.9 |

### Trends in response plan/appeal requirements 2012 - 2017 (million US \$)

| Year | Funded (million US \$) | Unmet (million US \$) | Rate |
|------|------------------------|-----------------------|------|
| 2017 | 130                    | 175                   | 43%  |
| 2016 | 136                    | 354                   | 38%  |
| 2015 | 132                    | 377                   | 35%  |
| 2014 | 241                    | 481                   | 50%  |
| 2013 | 265                    | 477                   | 56%  |
| 2012 | 153                    | 215                   | 71%  |

## STRATEGIC OBJECTIVES

- Provide humanitarian assistance to the most vulnerable people (local communities, returnees, displaced and repatriated persons) in northern and central Mali and any other areas affected by a crisis, whatever its nature.
- Strengthen the access of vulnerable people to basic services (education, health, nutrition, water, sanitation and hygiene), to protection, and to basic infrastructure and state services.
- Strengthen the livelihoods and resilience of the most vulnerable, as well as emergency preparedness.

## SUMMARY PROGRESS \*



\* The achievements of Early Recovery come from funding outside HRP