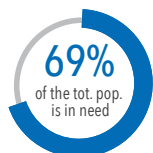


KEY FIGURES ⁽¹⁾⁽²⁾



PEOPLE IN NEED



POPULATION MOVEMENT ⁽⁴⁾



% OF IDPS & RETURNEES BY SHELTER/HOUSING CATEGORY



55% With host families

22% In rented lodging

19% In spontaneous settlements or collective centers ⁽⁵⁾

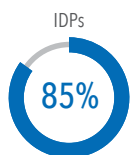


86% In original house of residence

7% With host families

7% In rented lodging

DURATION OF DISPLACEMENT & RETURN* ⁽⁶⁾

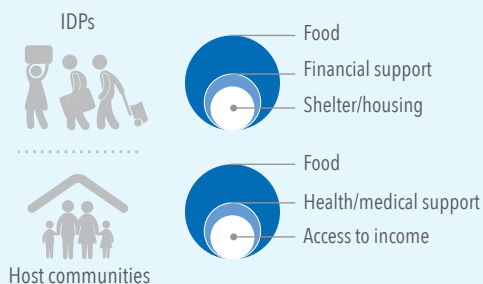


*Duration of stay in the return location.

The needs of Internally Displaced Persons (IDPs), returnees, both conflict and disaster-related, and of the non-displaced host community remain high in Yemen. An estimated 2.2 million people are currently displaced, of whom 77 per cent are living either with host communities (1.2 million people) or in rented accommodation (480,000 people).⁽²⁾ The rest are living in spontaneous settlements or collective centers. In addition, slightly more than 1 million people have provisionally returned to their areas of origin, although the sustainability of these returns remains precarious.⁽²⁾ Over 3,000 locations were assessed, about 90 per cent in IDP and host communities and 10 per cent in areas of return with host communities, across the 333 districts of Yemen. The results are an in-depth understanding of the needs of this vulnerable population.⁽³⁾ This snapshot presents key assessment findings.

PRIORITY NEEDS AMONG IDPs & HOST COMMUNITIES

(2,978 locations surveyed)



MAIN PROBLEMS RELATED TO ACCESS TO FOOD



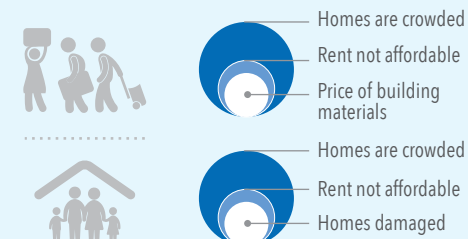
In over 80% of the locations assessed, IDPs, returnees and host communities have reported price, distance, quantity and quality as main problems related to access to food.



MAIN PROBLEMS RELATED TO SHELTER

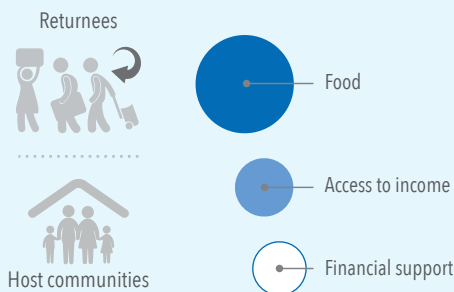


IDPs & host communities



PRIORITY NEEDS AMONG RETURNEES & HOST COMMUNITIES

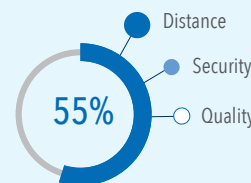
(314 locations surveyed)



MAIN PROBLEMS RELATED TO ACCESS TO HEALTH



In over 55% of the locations assessed, access to health care is problematic mainly due to distance, security and quality of services available.



Returnees & host communities

