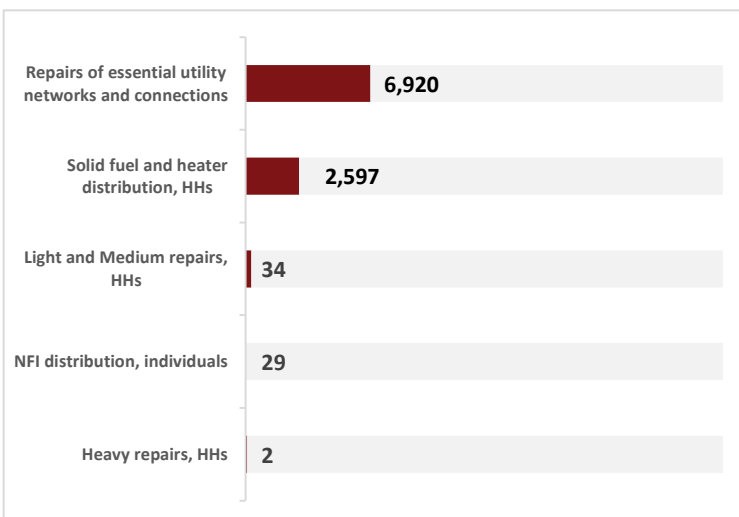




Shelter monitoring in Popasna, Luhansk oblast, Ukraine. Photo credit: UNHCR Shelter Associate.

**Escalation of the conflict.** In March 2021, the geopolitical context of the armed conflict in eastern Ukraine deteriorated. Scaled up military presence along the eastern and southern border coupled with intensification of military clashes and use of heavy weapons. As a result, the Ukraine Humanitarian Country Team agreed to strengthen the emergency response preparedness and review the Inter-Agency Contingency Plan. Based on the agreed contingency scenarios, the Shelter/NFI Cluster reviewed its HRP activities (also establishing a priority order in case of escalation), its target groups and the budget. The Cluster estimated that in the contingency plan scenario 55,700 more persons will need shelter, NFI and winterization assistance, bringing the HRP sectoral target to 174,700 persons. 6,5 additional million USD will be required to fund the revised Cluster activities and target. The trigger that will activate the scenario is – “more than 15 inhabited houses damaged per day, more than twice a week”<sup>1</sup>. The number corresponds to the “pre-ceasefire” situation and serves as a threshold for triggering the scenario.

## Activity progress (Q1 2021)



## KEY NOTES

In the first 3 months of 2021, due to COVID-19, the Cluster held only one online meeting, at sub-national level. In the same period the Cluster participated in various technical and coordination meetings, including the participation in the preparation of the Eastern Ukraine Contingency Plan.

Activation of Cluster: December 2014

## CLUSTER TEAM

Cluster lead agency: [UNHCR](#)

National and Sub-National Cluster Coordinator:  
Sviatoslav Savchuk | [savchuk@unhcr.org](mailto:savchuk@unhcr.org)

## KEY DOCUMENTS

- Shelter/NFI Cluster strategy [ENG](#)
- Winterization Recommendations 2019-2020 [ENG RUS UKR](#)
- Winterization campaign 2019-2020. Lessons learned [ENG UKR](#)
- Monetization in the Shelter and NFI Sector in Ukraine [ENG](#)
- Shelter Cluster Annual Report 2019 [ENG UKR](#)
- Guidance on structural repairs and reconstruction [ENG UKR](#)
- Technical Essay on Housing Situation in Ukraine [ENG](#)
- Common cash PDM core questions [ENG RUS UKR](#)
- Evaluation of the Shelter and NFI Cluster in Ukraine [ENG UKR](#)
- COVID-19 Ukraine assistance delivery protocol [ENG RUS UKR](#)
- Response strategy for the COVID-19 [ENG](#)
- Addendum to Response strategy for the COVID-19 [ENG](#)

## KEY LINKS

- [3W online submission form](#)
- [Who is doing what where and when interactive dashboard](#)
- [Housing, Land and Property TWIG](#)
- [Portal of economic and social recovery](#)
- [Ukraine Humanitarian Fund \(UHF\)](#)

## January-March at a glance

**174,000**  
Total people in need  
**119,314**  
Cluster target population  
**14**  
Cluster partners  
**1.9%**  
Level of funding

Source: [HRP Ukraine 2021](#), 3W reports from partners. Cumulated figures for 2020  
Note: number of Cluster partners is calculated quarterly based on 3W reports which indicates number of humanitarian actors reporting to Cluster and operating in Ukraine in a particular quarter

<sup>1</sup> The trigger activates the scenario. However, the cluster has a reduced capacity to provide physical repairs in GCA. The SESU took a leading role in this activity while humanitarian actors provide a complementary response.

**Government response.** The State Emergency Service of Ukraine continues to repair houses damaged by the conflict. SESU’s assistance is limited to Donetsk oblast in government-controlled areas, while the Cluster still advocates for their activation in Luhansk oblast. Despite the delayed start of the program due to the COVID-related restrictive measures, at the end of the first quarter SESU has completed the repair of 100 buildings.

In addition, the compensation process for destroyed houses is ongoing. Local commissions continue to assess buildings in both oblasts since the beginning of the year. In the period covered by this report, the regional committee has approved the compensation payment for more than 50 families.

**New damages to residential buildings.**

Based on information provided by INSO, OSCE and UNDSS, the Shelter/NFI Cluster continues to track damages to residential premises. The total number of damaged houses in Q1 is 56. The current trend heads towards the increase - from 8 damages in January to 21 in February, to 27 and 28 in March and April. Most of them occurred in the NGCA side of the “contact line” - almost 74 percent, which reinforces the overall statistic data throughout the years.

The two most impacted settlements are [Staromykhailivka](#) (18 damages) and [Syhnalne](#) (16 damages) which both are in the Donetsk NGCA. Together, they account for more than 60 per cent of the damages in the reporting period.

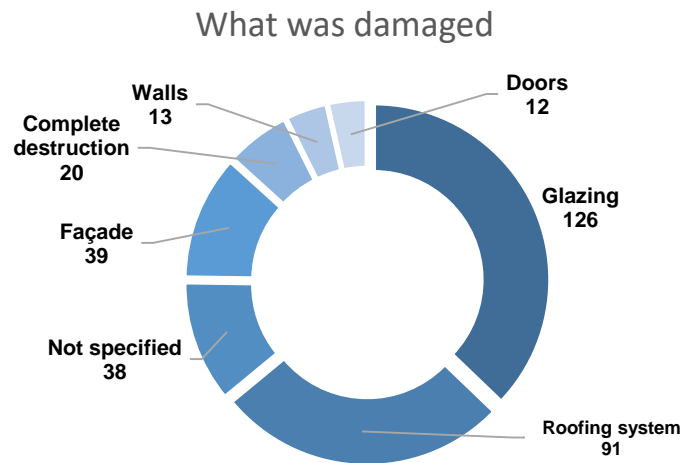


Figure 1. Count of the damaged elements

The chart below shows this year’s monthly trends in the number of new damages in comparison with 2020, 2019, and 2018. Similarly to the trend in all past years, also in 2021 the peak in the number of damages was registered in the middle of spring. The escalation of the conflict has a visible implication. More damages were recorded than the last quarter of 2020.

