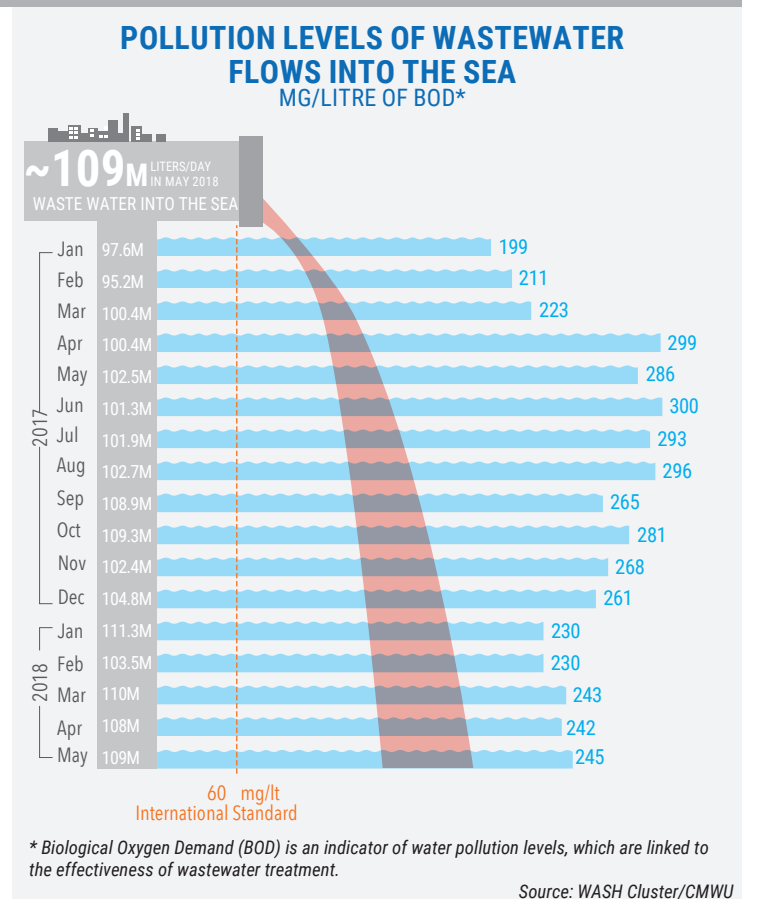
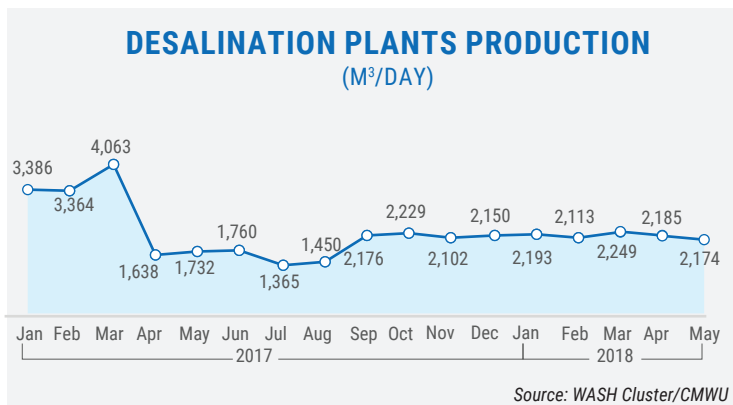
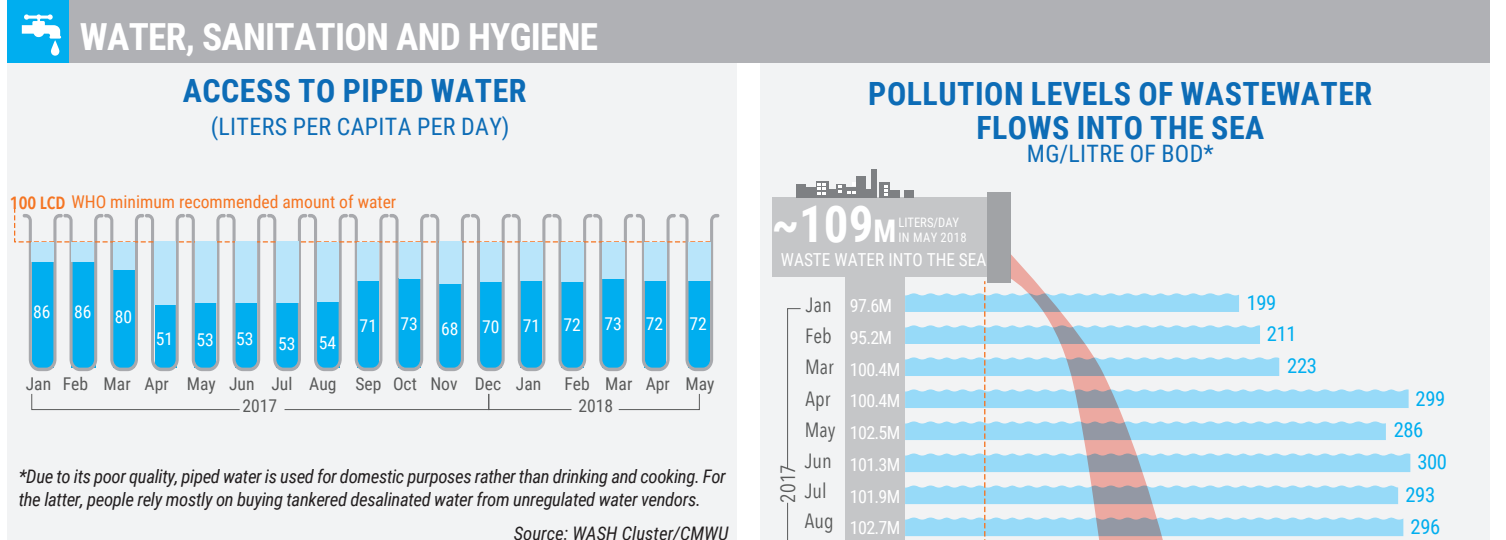
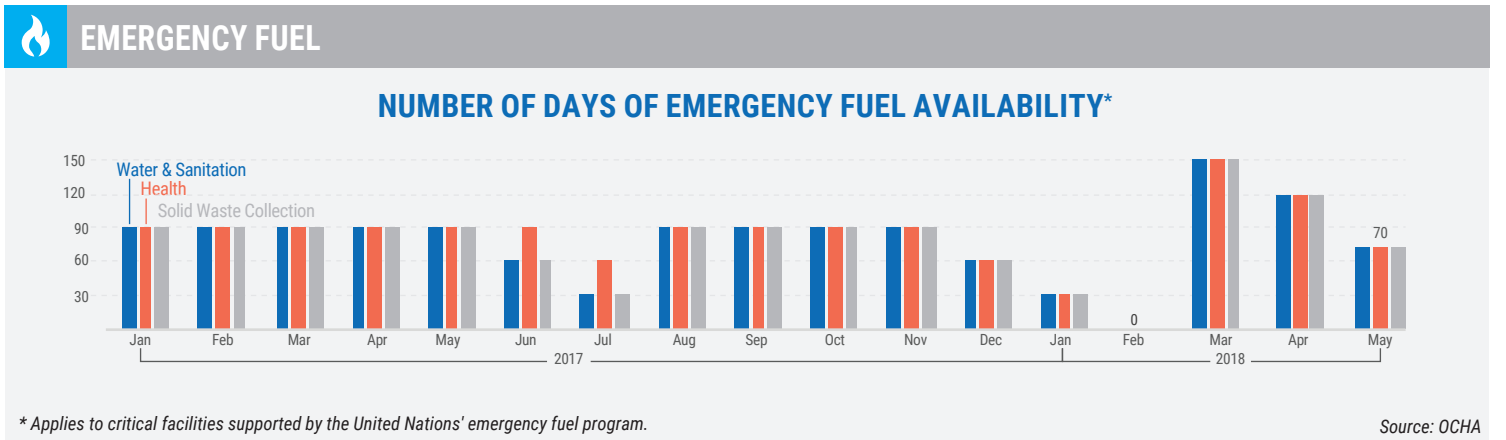
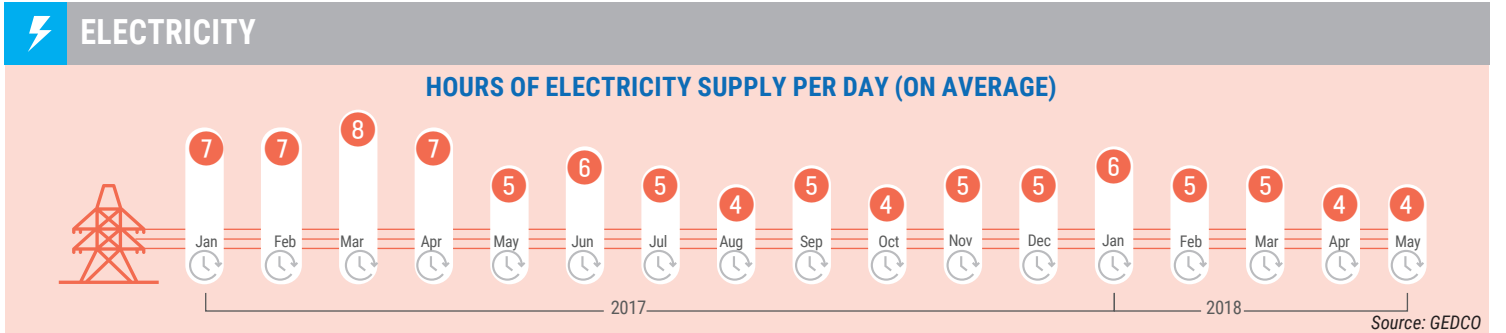
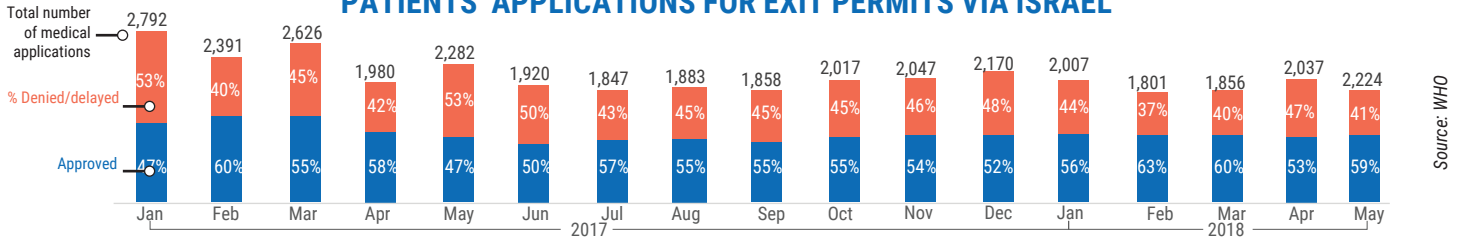


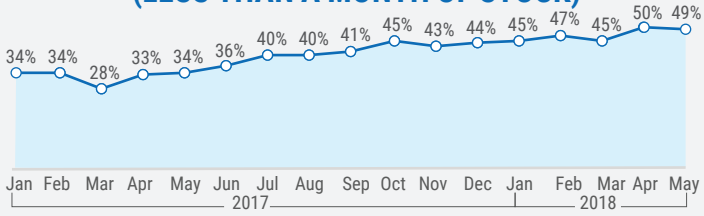
The Gaza Strip faces an unprecedented humanitarian crisis, impacting the livelihoods and provision of essential services to Gaza's two million residents. This crisis has been driven by over 11 years of an Israeli blockade and an unsolved internal Palestinian divide, exacerbated since 30 March 2018 by the massive increase in Palestinian casualties in the context of mass demonstrations taking place near Israel's perimeter fence. The following indicators were identified by the Humanitarian Country Team (HCT) to monitor the crisis, trigger humanitarian action and prevent further deterioration.



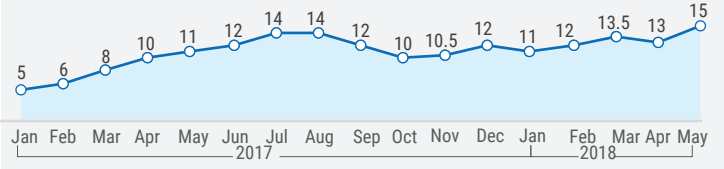
PATIENTS' APPLICATIONS FOR EXIT PERMITS VIA ISRAEL



PERCENTAGE OF DRUGS AT ZERO STOCK LEVEL* (LESS THAN A MONTH OF STOCK)

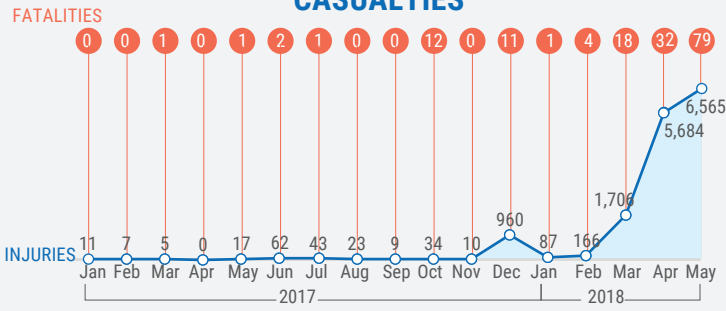


WAITING TIME FOR EAR-NOSE-THROAT SURGERY AT SHIFA HOSPITAL (IN MONTHS)



PROTECTION

CASUALTIES*

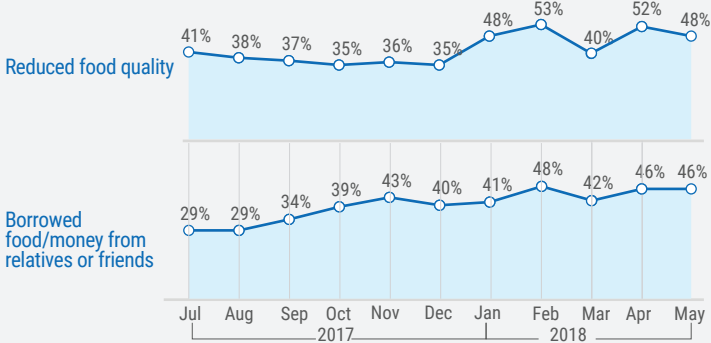


SHOOTING INCIDENTS IN ACCESS RESTRICTED AREA SEA/LAND*

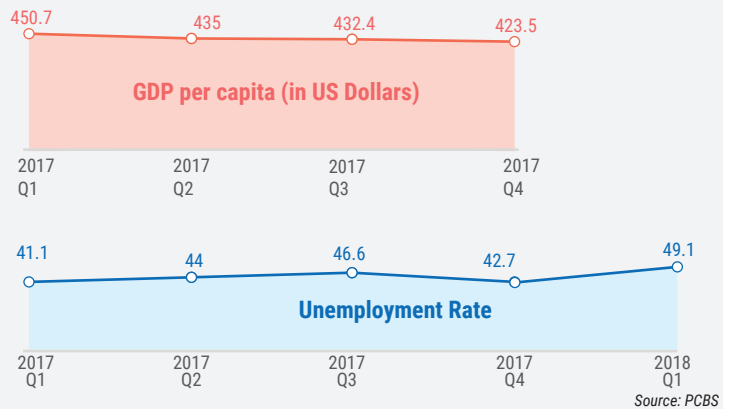


FOOD-SECURITY

RELIANCE ON FOOD INSECURITY COPING MECHANISMS*

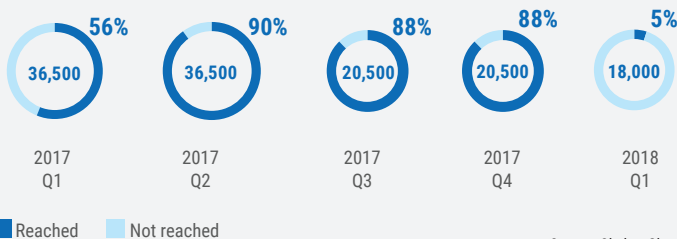


MACROECONOMIC INDICATORS



SHELTER

SHELTER CASH ASSISTANCE TO ELIGIBLE IDPs (2014 HOSTILITIES)



EDUCATION

RATE OF TEACHER ABSENTEEISM AT PA SCHOOLS

