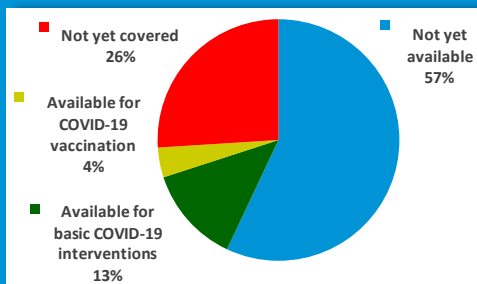


COVID-19 Cases

- South Sudan still on **alert** despite decrease in confirmed cases
- Average number of newly confirmed cases remains **stable**
- **3 new deaths** reported in past week
- Efforts ongoing to link Ebola Virus Disease (EVD) preparedness and COVID-19 response

Funding

- Severe shortages in funding for **incentive payment** under **National COVID-19 Strategic Preparedness and Response Plan** June 2021-May 2022

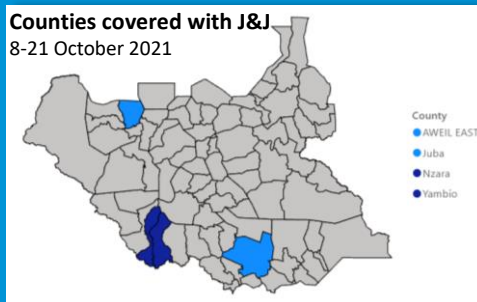


Laboratory testing

- Interrupted testing in NPHL and Nimule due to funding shortages for incentives
- Partners using **antigen rapid diagnostic tests (RDTs)** on symptomatic cases → one confirmed case from MSF in Yei

Vaccination

- So far, **5,680** people vaccinated with **one-shot Johnson & Johnson** in **17** health facilities in **4** counties.



- Training of J&J vaccinators at county level and distribution to remaining health facilities ongoing.
- Partners looking into new vaccination strategies aimed at increasing utilization rate to encourage donor countries to send more vaccines to South Sudan
- Need for more aggressive messaging to increase vaccine uptake among females (25.8%) and health care workers (26%)

All relevant COVID-19 documents available at:
<https://covid19partnersplatform.who.int> AND
<https://www.humanitarianresponse.info/en/operations/south-sudan/covid-19>

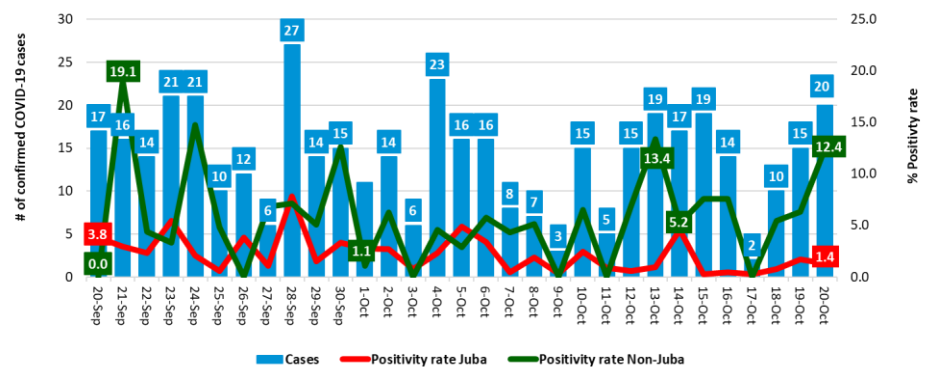
Weekly COVID-19 regional update as of 20 October 2021				
	South Sudan	Kenya	Uganda	Ethiopia
Total positive cases	12,270	252,308	125,364	360,503
Average daily new cases last week	14 (-)	118 (↓)	71 (↓)	533 (↓)
Total active cases last week	311 (-)			
Total severe cases in IDU	1			
Total reported deaths	133 (↑)	5,238	3,188	6,287
Total samples tested	244,582			
% Case Fatality Rate	1.1%	2.1%	2.6%	1.7%
% positivity rate (7-day average)	2.0%			
Total 1 st dose vaccinated	84,658 (0.6%) *			
Total fully vaccinated **	38,653 (0.3%) *	2.6%	1.0%	1.0%

Source: South Sudan Ministry of Health Emergency Operations Centre

* South Sudan National Bureau of Statistics, 2008 Census data extrapolated

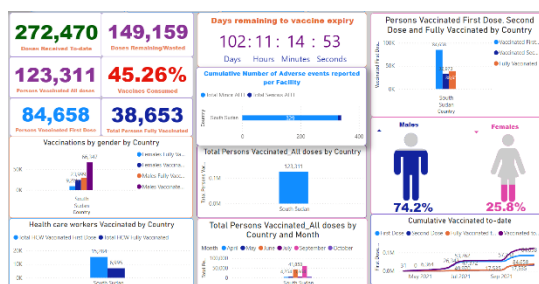
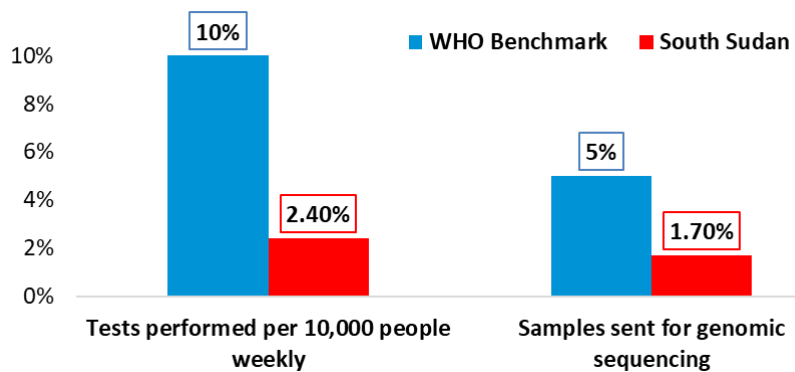
** Fully vaccinated with 2 doses of Astra Zeneca or 1 dose of Johnson & Johnson

COVID-19 daily confirmed cases and positivity rate in Juba and Non-Juba testing sites*, South Sudan 20 September-20 October 2021



* Juba testing sites include National Public Health Laboratory (NPHL) and private labs
 Non-Juba testing sites include Nimule and GeneXpert sites

WHO Testing Benchmarks versus South Sudan situation 5 April 2020-20 October 2021



Check out the **COVID-19 vaccination dashboard**