

AFRICA

CERF allocations overview 2016



United Nations

CERF

FAST. EFFICIENT. GLOBAL.

SAVING LIVES TOGETHER

In 2016, CERF allocated US\$ 295 million - approximately 67 per cent of annual global allocations - to support life-saving humanitarian activities across Africa. Over \$166 million was allocated through CERF's Rapid Response window to kick-start humanitarian operations in response to new or rapidly deteriorating emergencies, while nearly \$129 million was allocated through CERF's Underfunded Emergencies window to help underfunded and neglected emergencies. CERF's support enabled UN agencies and partners to respond to the needs of people affected by Africa's major crises, including the Lake Chad Basin, South Sudan and Burundi crises. This includes refugees in neighboring countries who have fled conflict, as well as the communities hosting them.



\$295 million
to life-saving responses
in Africa in **2016**



15.5 million
people targeted

\$166 million
Rapid response
window

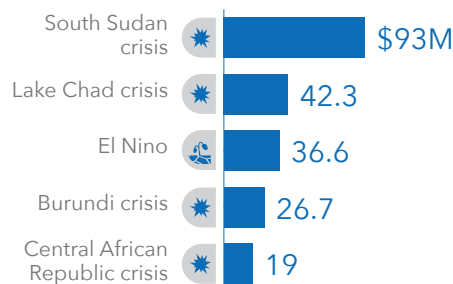
\$129 million
Underfunded
emergency
window



67% of
CERF grants
in **2016**

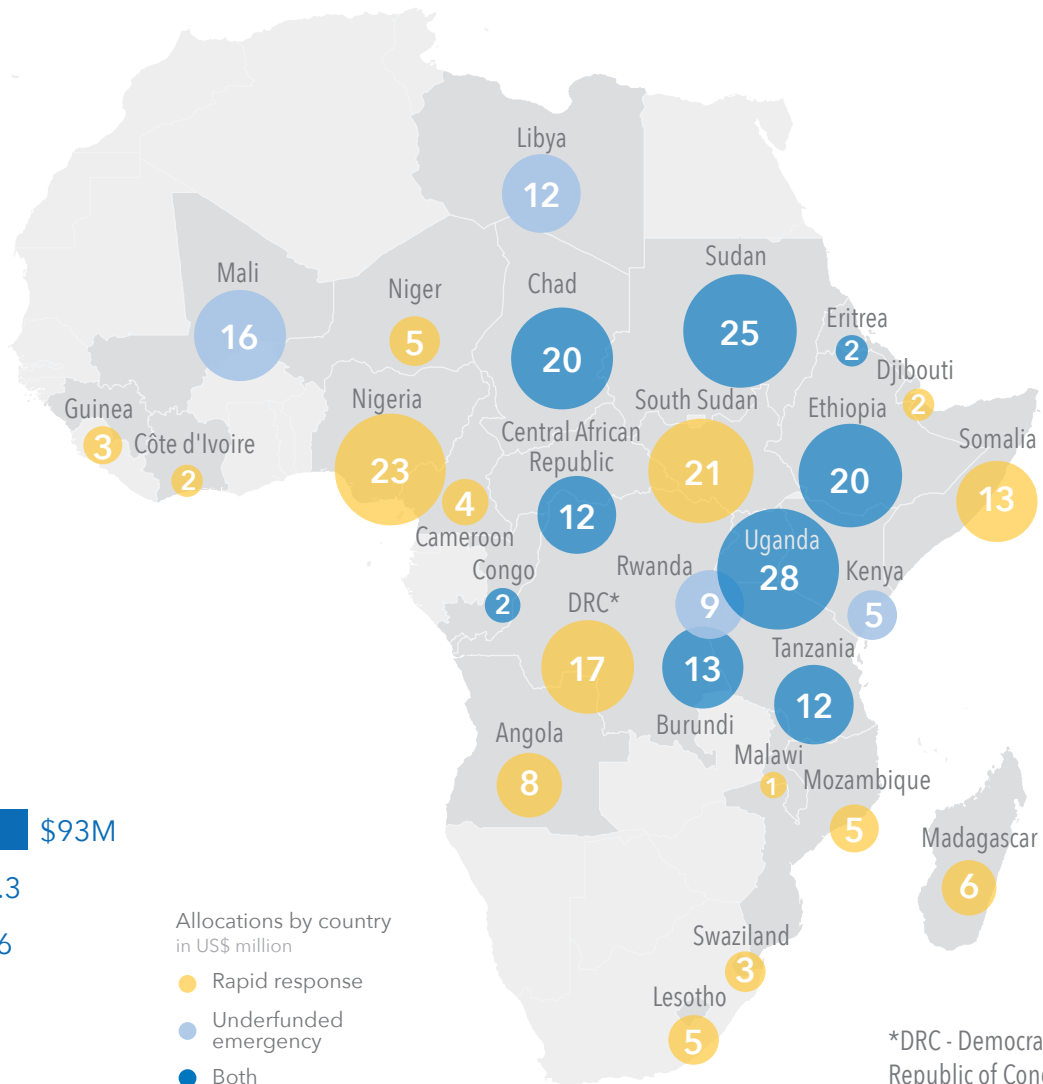
was allocated to
28 African countries

Allocations by crisis
in US\$ million



Allocations by country
in US\$ million

- Rapid response
- Underfunded emergency
- Both



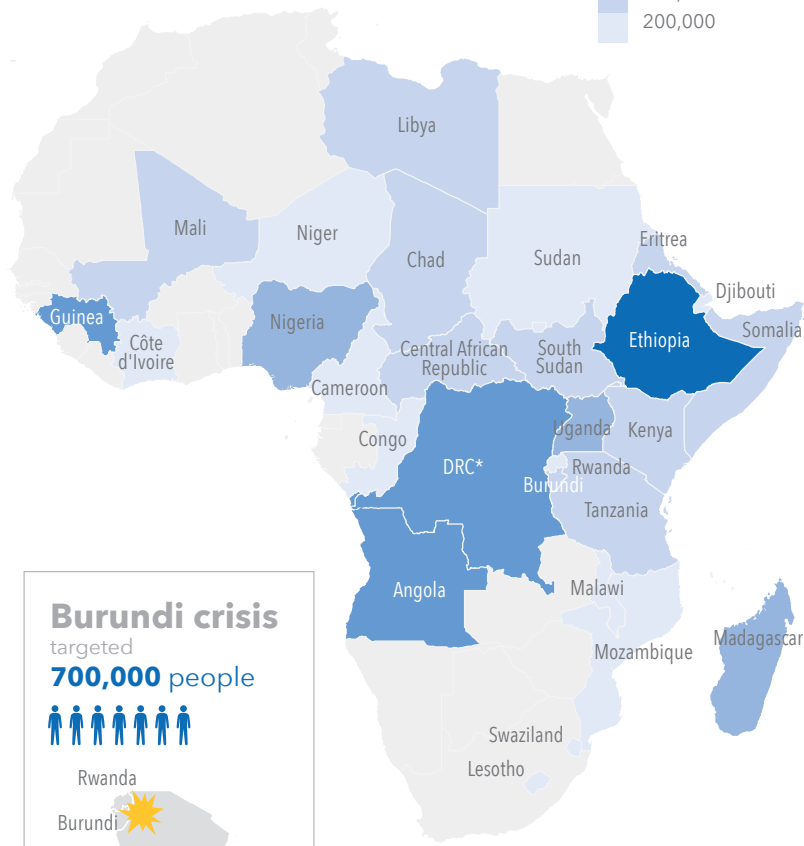
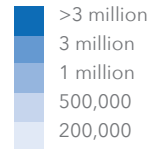
*DRC - Democratic Republic of Congo



15.5 million people targeted

100,000 people targeted

of people targeted by country (in US\$ million)



Lake Chad crisis
targeted **500,000** people

Central African Republic crisis
targeted **700,000** people

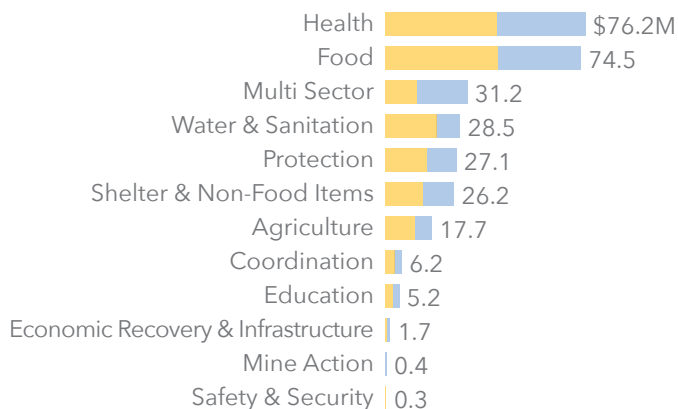
Burundi crisis
targeted **700,000** people

South Sudan crisis
targeted **1.3 million** people

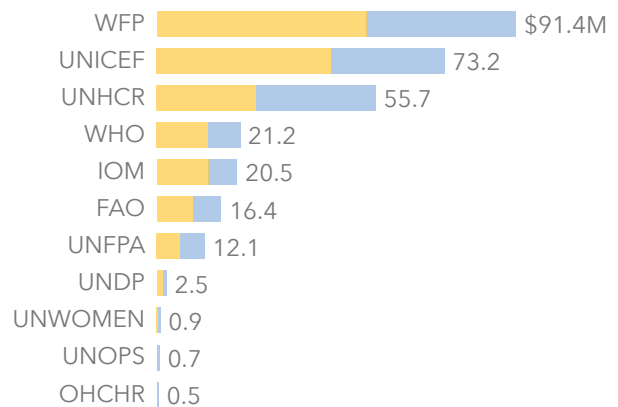
El Niño
targeted **1.8 million** people

*DRC - Democratic Republic of Congo

ALLOCATIONS BY SECTOR in US\$ million



ALLOCATIONS BY AGENCY in US\$ million



The boundaries and names shown and the designations used on this map do not imply official endorsement or acceptance by the United Nations.