



Borno state ministry of health

Cholera outbreak situation report No.1

1st September 2021

Highlights

- 69 additional suspected cases of cholera were reported on the 1st September 2021 in Borno State
- 3 deaths were reported

Epidemiological Summary

The total number of suspected cholera cases reported as at 1st September 2021 stands at 666 with 45 associated deaths, (CFR – 6.7%). 456 cases from Gwoza, 43 from Kaga, 126 from Hawul, 6 from Magumeri, 23 from Kaga, 4 from MMC and 8 from Jere LGAs.

Out of the 33 samples collected and tested in the State using RDTs, 20 (66.7%) were positive, while 11 (55%) of which were culture positive.

	Gwoza	Dambo	Hawul	Magumeri	Kaga	MMC	Jere	Total
Cases								
New suspected cholera cases	48	5	15	0	0	1	0	69
Cumulative suspected cases	456	43	126	6	23	4	8	666
Deaths								
New death	1	2	0	0	0	0	0	3
Cumulative deaths	20	11	8	1	2	3	0	45
Laboratory								
Number of specimens tested	6	10	6	1	3	6	1	33
Specimen positive RDT	2	7	3	1	3	3	1	20
Specimen positive culture	1	0	3	1	3	3	0	11

Table 1: Number of cases reported as 1st September 2021

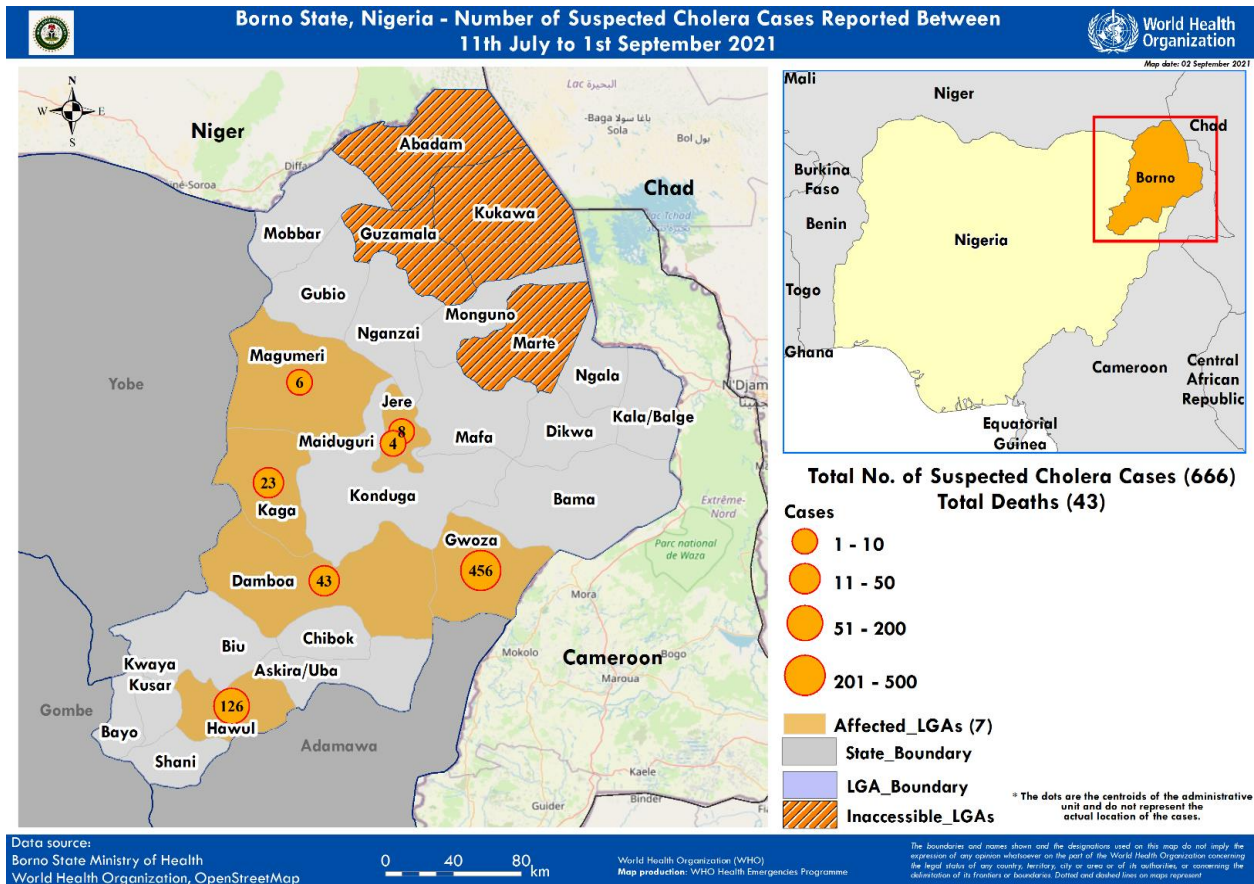


Figure 1: Map of Borno state showing affected LGAs in Borno State.

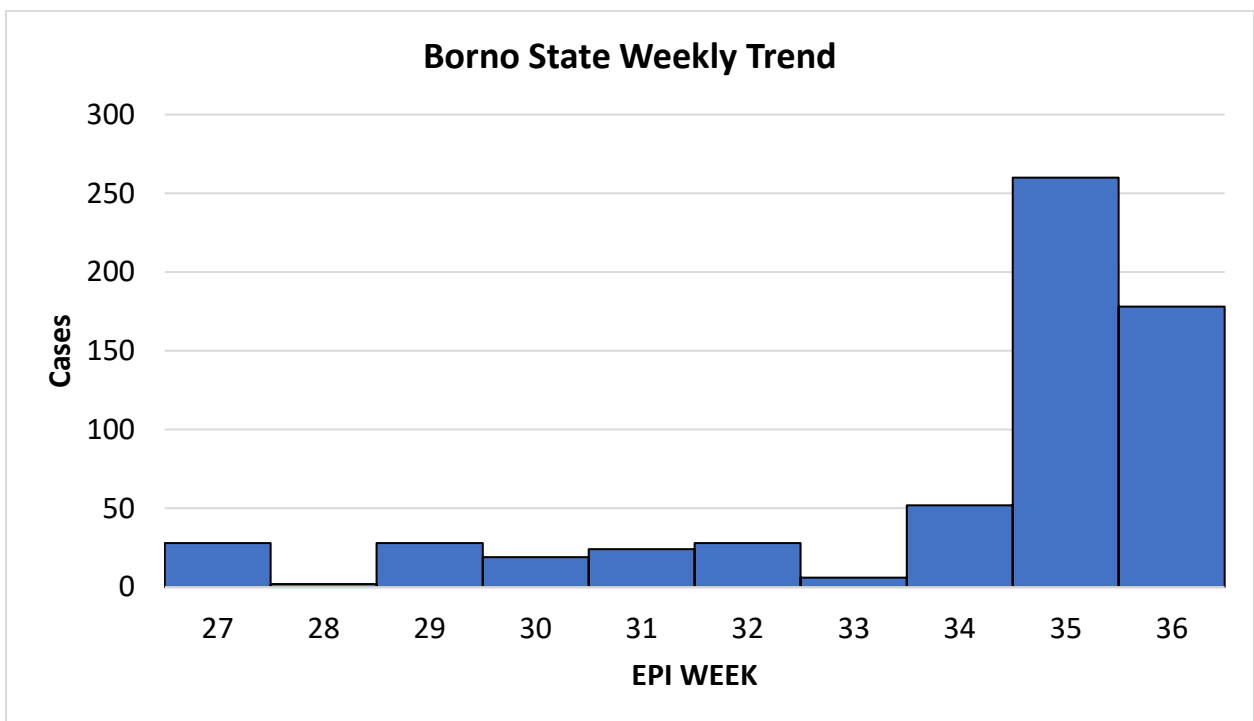
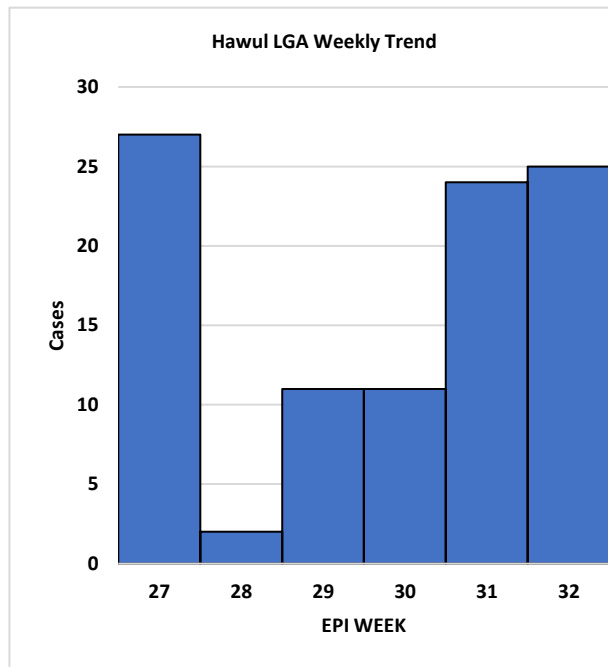
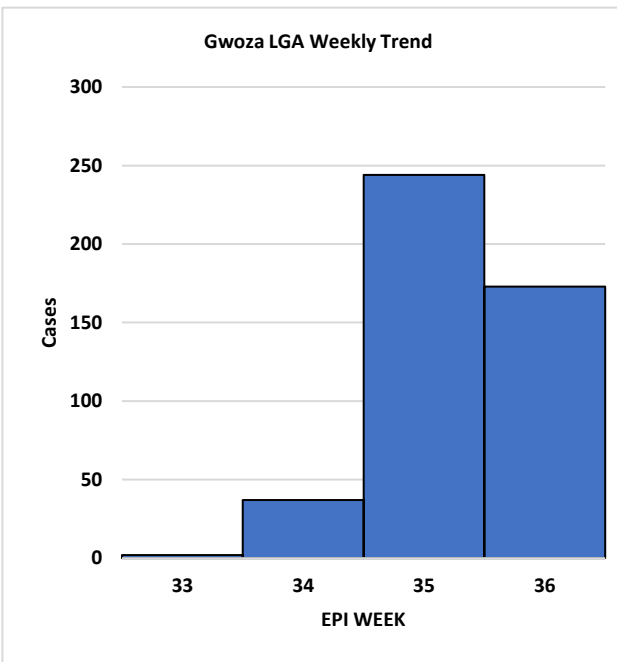
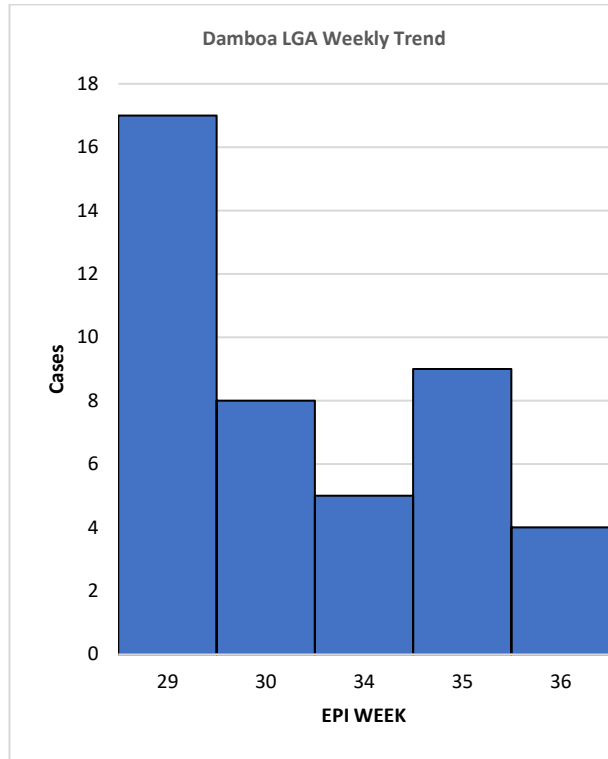
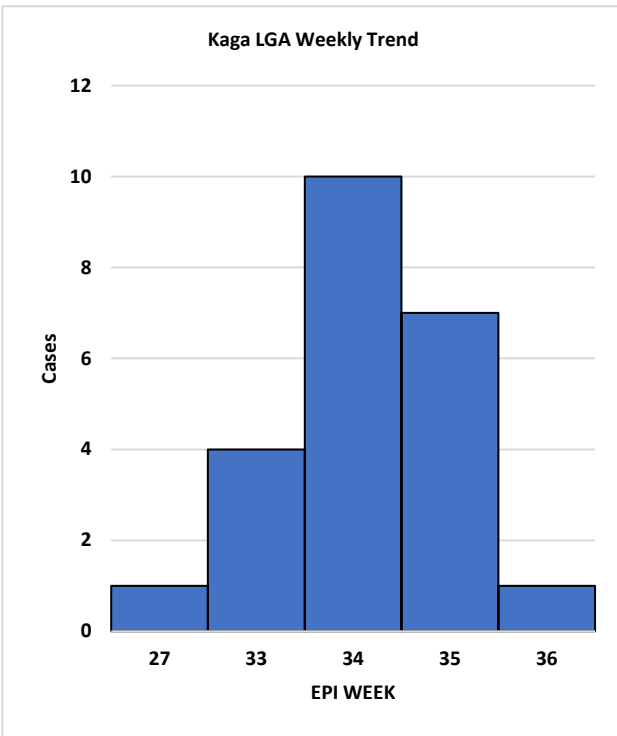


Figure 2a: Weekly Epi-curve of cholera cases showing number of suspected cases in Borno state

Figure 2b: Trend of cholera cases across the affected LGAs in Borno state



Response

Coordination

- Public Health EOC continues coordination meetings of the cholera outbreak at state level to ensure a robust and effective coordination of the response activities.

Surveillance

- Active case search commences in all affected locations across the state, supported by WHO.
- 412 households and sensitized 2,620 persons on basic preventive measures for cholera
- Priority locations identified and communicated to WASH and risk communication teams.
- Alerts investigation ongoing and samples to be collected by the LGA DSNOs in the teams

Case management

- SMOH and health sector partners (WHO, MSF, ICRC, MDM) continue to support with managing of the CTCs/CTU and provision of medical supplies.

WASH

- UNICEF, RUWASSA, IOM and other WASH sector partners continued response activities in affected locations through hygiene promotion, disinfection of households and latrine dislodgement, chlorination of water points and water trucking.
- Community sensitization continued focused on hygiene promotion and health education on hand washing and water purification, dangers of open defecation.

Risk Communication and Community Engagement

- WHO and UNICEF are currently supporting the state to curtail the outbreak of Cholera through the community health champions house-to-house intervention across the hotspot areas
- 2,500 persons were sensitized on cholera preventive messages and additional 3,000 persons in hard-to-reach locations were reached by mobile health teams
- There is an ongoing WHO-supported motorized campaign in IDP camps, host communities and densely populated areas with Cholera preventive messages, integrated with Covid-19, more than 65,000 persons across state.