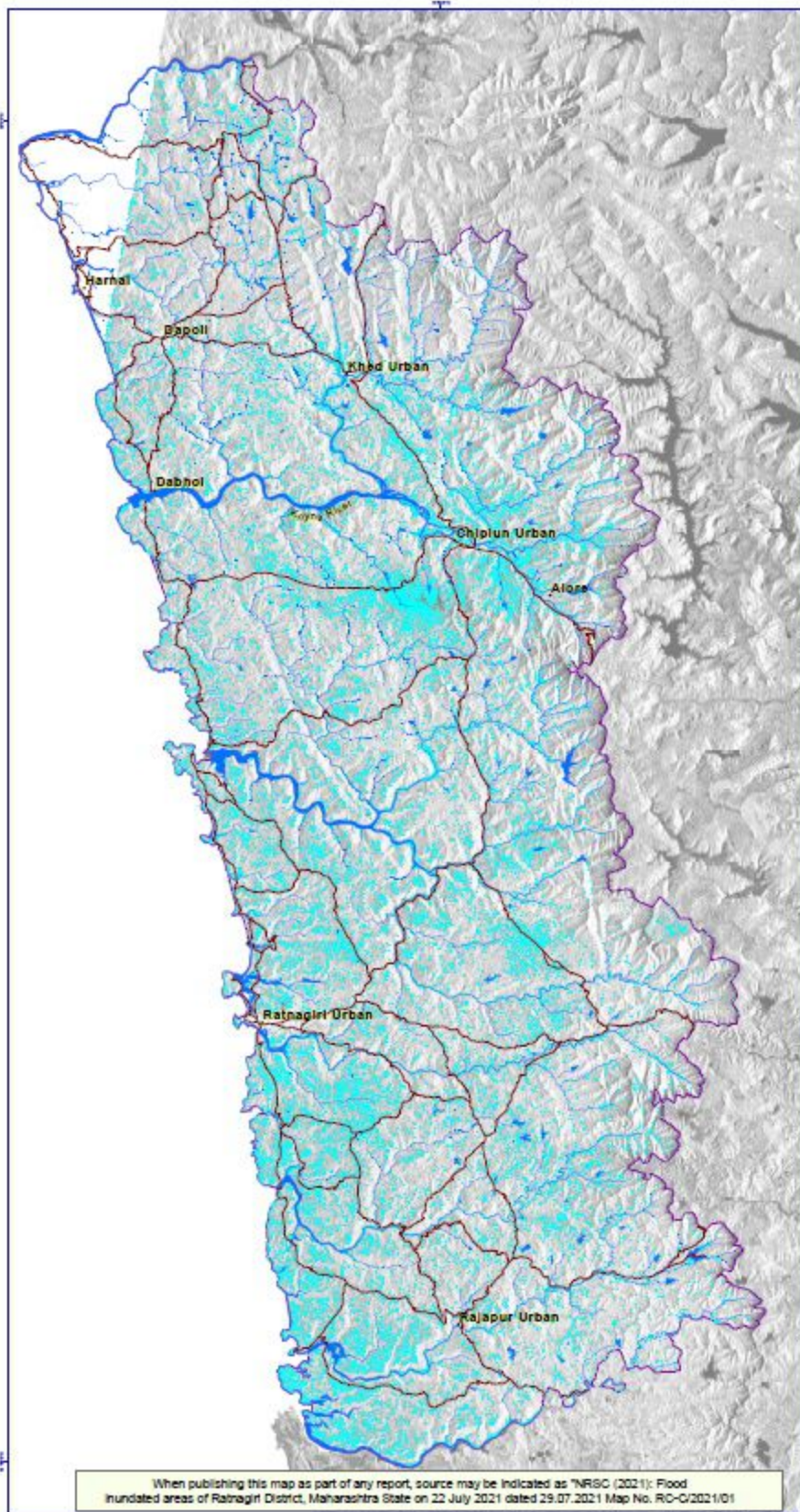


Flood Inundation in Ratnagiri District, Maharashtra State

For Official Use

Based on analysis of Sentinel-1 SAR Images of 22.07.2021

MAP ID: RC-C/2021/01



Location Map



0 5 10 20 30 KM

Legend

- Flood Inundated Area
- Water body /Rivers
- Major Roads
- District Boundary
- Cities/Towns

Satellite Data Used:
Sentinel-1 SAR IW acquired 22.07.2021

Other Data Used:
SISDP LULC, Admin & Base Layers

This product is prepared using Sentinel-1 SAR Satellite data received under International Charter Call ID-630. The map provides preliminary results of flood inundation which may show flood waters including rain water accumulation in low lying areas. All geographic information has limitations due to the scale, resolution and date. No ground verification is done.

This product is prepared using Sentinel-1 SAR satellite image received under International Charter, Call ID-630



National Remote Sensing Centre, ISRO
Regional Remote Sensing Centre-Central
Dept. of Space, Govt. of India
www.nrsc.gov.in



nrsc

When publishing this map as part of any report, source may be indicated as "NRSC (2021): Flood inundated areas of Ratnagiri District, Maharashtra State on 22 July 2021 dated 29.07.2021 Map No. RC-C/2021/01