

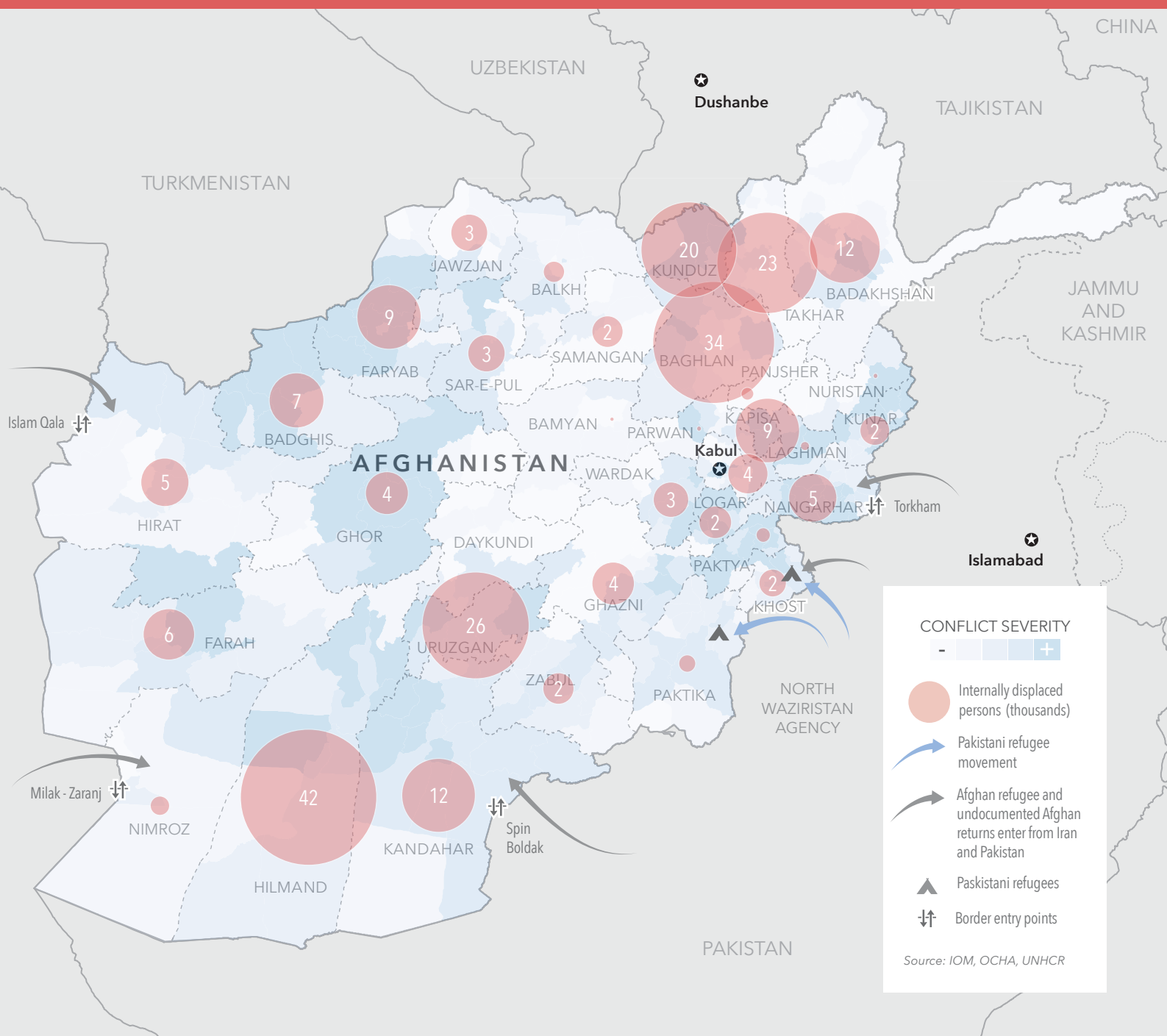
FLASH APPEAL

AFGHANISTAN

FLASH APPEAL

ONE MILLION PEOPLE ON THE MOVE
COVERING SEP-DEC 2016

FLASH APPEAL AT A GLANCE



KEY FIGURES



1 million people
expected to move from Sep to Dec 2016



400,000 undocumented returnees
(increase from 111,000 planned for HRP)

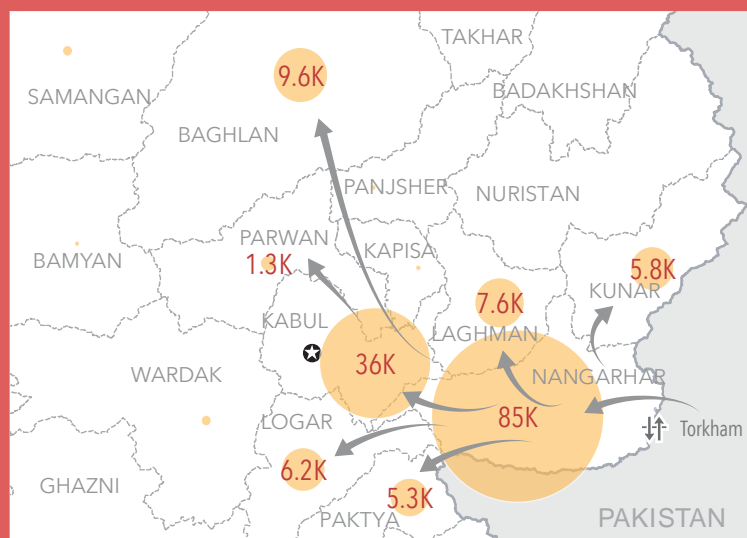


220,000 refugee returnees
(increase from 30,000 planned for HRP MYR)



400,000 internally displaced
(increase from 250,000 planned for HRP)

Afghan returnees by intended province of return



PREPARING FOR THE CRISIS

CRISIS OVERVIEW

Over one million people are anticipated to be “on the move” internally and across borders in 2016. This includes newly displaced and newly returning Afghans, many of whom will require humanitarian assistance.

These figures, mainly triggered by the recent surge in the **return of registered refugees and undocumented Afghans** from Pakistan, far surpass planning figures for the 2016 Humanitarian Response Plan and have the potential to significantly impact an already fragile humanitarian context within Afghanistan. A cumulative estimate suggests over 1 million people have been displaced across Afghanistan since 2002 which gives an estimation of the magnitude of the possible humanitarian crisis.

Since the end of the mid- July Eid, the amount of returns has skyrocketed: 225,000 people have returned from Pakistan and Iran so far in 2016, out of which 89,000 are documented and 136,000 undocumented, most of them in the last six weeks.

By the end of the year, a repatriation caseload of 220,000 documented and as many as 400,000 undocumented returnees are anticipated, a much higher number than planned for by UN or humanitarian aid agencies.

This spike in returns is motivated by different factors, including an apparent drastic deterioration of the protection/

political space in Pakistan with increasing incidents of detention, forced evictions, police raids and harassment. From Iran the return of undocumented Afghans remains high, while repatriation of registered refugees remains voluntary, safe and dignified and is minimal in numbers.

The sudden increase in return is taking place against a backdrop of continued high levels of **conflict-induced displacement**, following similar patterns to 2015 which recorded the highest level of displacement since 2002. To date, 245,000 have been newly displaced across the country in 2016 with forced displacements now recorded in 31 out of the 34 provinces. Total numbers will exceed the HRP displacement estimations of 250,000 newly displaced and 100,000 prolonged IDPs. A total of 400,000 newly displaced IDPs are expected by the end of the year as the conflict escalates, with the Northern, Southern and Eastern regions of the country registering the highest numbers.

While newly displaced people are provided with a basic one-month assistance package, many have now been displaced for prolonged periods with less opportunity to return home, and might require further support.

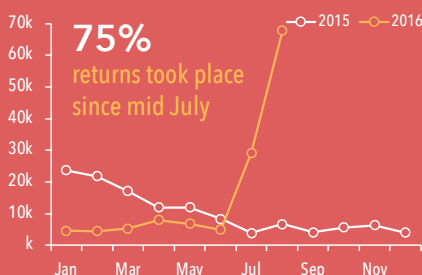
This adds to the over 3.5 million people in Afghanistan who require humanitarian assistance. The majority (57%) of the emergency affected population are children, while 23% are women.

03

UNDOCUMENTED AFGHAN RETURNS

135,800

returnees from Pakistan (1 Jan - 3 Sep 2016)

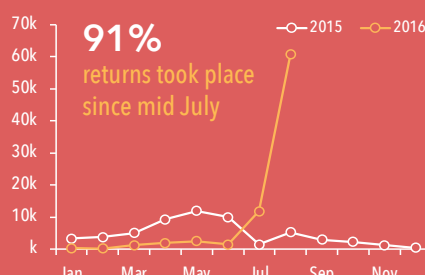


264,200 expected from Sep - Dec

AFGHAN REFUGEE RETURNS

89,000

assisted Afghan returns (1 Jan - 3 Sep 2016)

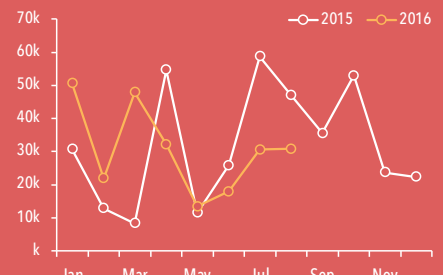


131,000 expected from Sep - Dec

INTERNALLY DISPLACED PERSONS

245,300

people displaced (Jan-Aug 2016)



154,750 expected from Sep - Dec

An average of **4,300** returns per day since mid July

AN UPCOMING HUMANITARIAN CRISIS

By year-end, over one million people are projected to be affected by new political or security developments on both sides of the border, prompting sudden and unanticipated displacements and returns. Many are expected to require some form of humanitarian assistance, especially as the cold winter season approaches and many go without proper accommodation or shelter. Many returnees have lived in Pakistan for three to four decades and have lost family linkages in Afghanistan. Given the nature of the harassment in Pakistan many returnees are unable to properly plan their return, have been forced to sell their assets quickly at reduced rates, and lack coping strategies and support systems within Afghanistan. A large segment of the returnee population, around 40%, is considered highly vulnerable (IOM).

Returns are expected to occur even in greater numbers, including clustered family returns of large groups above 1,000 persons, following the September Eid holiday and a November 15th cut-off date imposed by the Pakistani Government requiring all undocumented Afghans to have acquired formal documentation, which is expected to prompt a further surge in returns and/or deportations. Moreover, the expiration of the Proof of Registration cards at the end of 2016 could result in a further increase in the return of registered refugees.

The majority of returnees come from Khyber Pukhtunkhwa in Pakistan and are reporting to go primarily to **Kabul and Nangarhar** provinces (51% for the registered and 85% for the undocumented). This sudden increase is already placing a significant strain on local resources and services, depleting coping mechanisms in under-served communities which are, in many cases, already hosting also a high number of new and protracted conflict-induced IDPs.

The concentration of returnees in **urban centres and semi-urban areas**, specifically Jalalabad and Kabul, alongside the lack of absorption capacity, and other factors such as a dysfunctional land allocation system and lack of shelter capacity, will increase current trends of secondary displacement and lead to acute humanitarian emergency needs particularly during the winter months.

While the majority of accessible conflict-displaced IDPs are assisted on time, assistance is typically limited to a one-month package which is insufficient for those that are displaced beyond an initial period of a few weeks. With only 20% of the overall Returnee requirements listed in the Humanitarian Response Plan covered, initially based on lower return projections, **the humanitarian community has not received sufficient funding to meet the increased needs** for the rest of 2016.

While the numbers of returnees coming back to Afghanistan is far exceeding expectations and resources, the **overall vulnerability of the population has also increased**. The increased population requiring humanitarian assistance,

coupled with insufficient funding, means that programmes for vulnerable returnees are all seriously under-resourced. In addition, the emergency shelter and NFI, health, WASH, nutrition, protection and food security activities and services planned in the HRP are likely to remain underfunded considering the high humanitarian needs across the country triggered by the sustained internal displacement and the overall level of humanitarian funding available.

An initial rapid assessment undertaken in the six highest districts in central Nangarhar on 4-5 September has provided qualitative data which indicates that shelter is the primary need, with further significant concerns regarding health, WASH and food security; lack of secure tenure further presents a pervasive protection risk. Due to the sudden and considerable influx, local resources and basic services in Nangarhar have become dangerously overstretched, particularly in the capital of Jalalabad, with many returning communities living in open areas and multiple occupancy dwellings, heightening their exposure to the elements, disease and protection.

In this context the remaining four months of the year will require a well-coordinated and multi-faceted advocacy and operational response by humanitarian community to avert a potential humanitarian crisis as winter approaches.

HUMANITARIAN RESPONSE

Currently, Afghans with the appropriate documents are provided with a repatriation grant of USD 400 when they return to Afghanistan. Undocumented returnee families receive a one-month package of support at the border in Torkham. Internally displaced families also receive one-month support assistance.

Through this appeal, the humanitarian community will work to meet the following needs until the end of the year:

Ensuring a dignified and efficient reception of returnees, registration, profiling, support at the border as well as the provision of immediate assistance for the most vulnerable. This includes repatriation grants received for those documented as well as assistance packages for those undocumented.

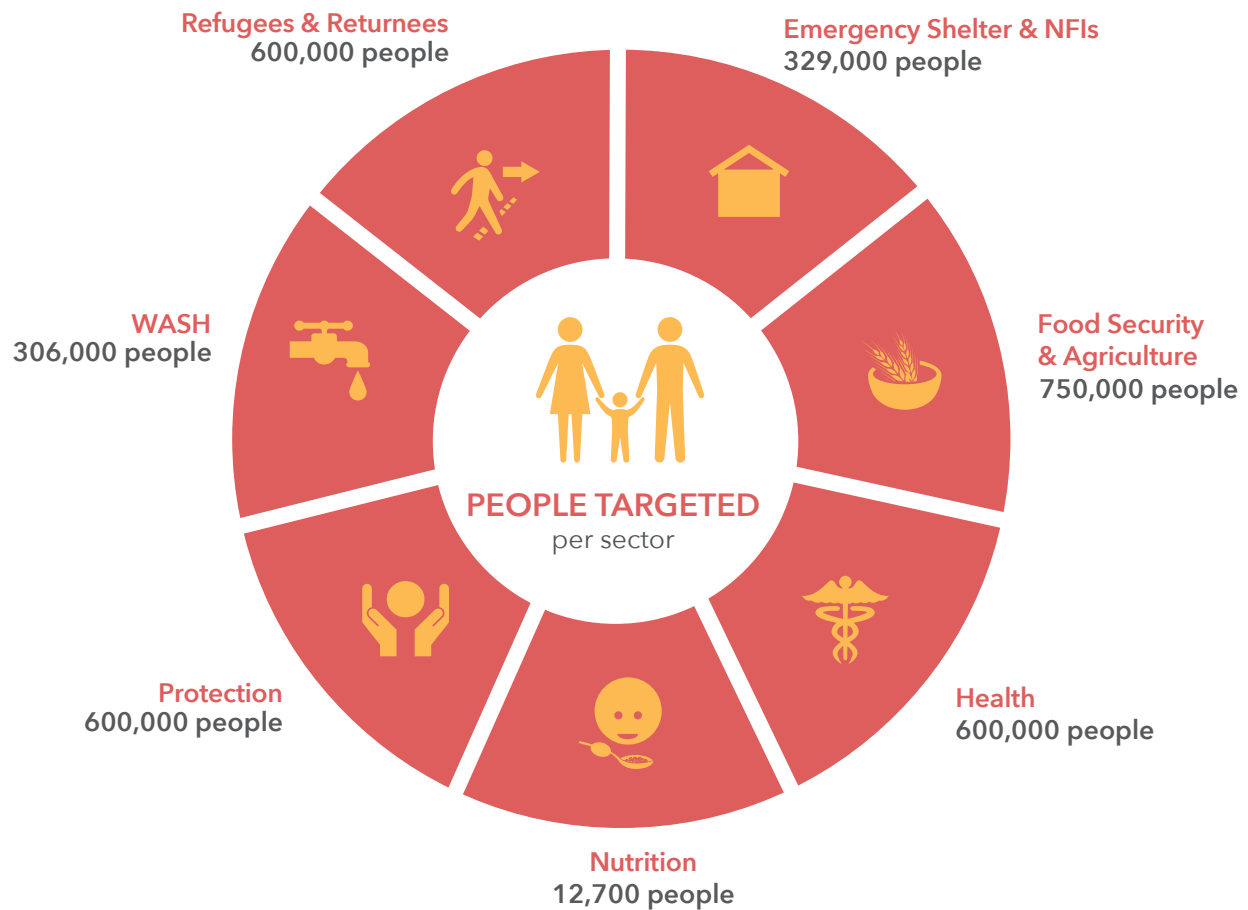
Creating a safe environment and ensuring access to food, basic services like health, a safe and adequate shelter as well as to utilities, critical infrastructure and income generating activities.

Identifying and prioritising the most vulnerable, including returnees and conflict affected IDP's.

Prioritising Kabul and Jalalabad for immediate humanitarian response: The combined waves of internal displacement and mass return are expected to disproportionately impact major urban centers, particularly Kabul and Jalalabad, as they relatively secure areas, regarded by displaced and returning population as more conducive to find self-reliance opportunities.

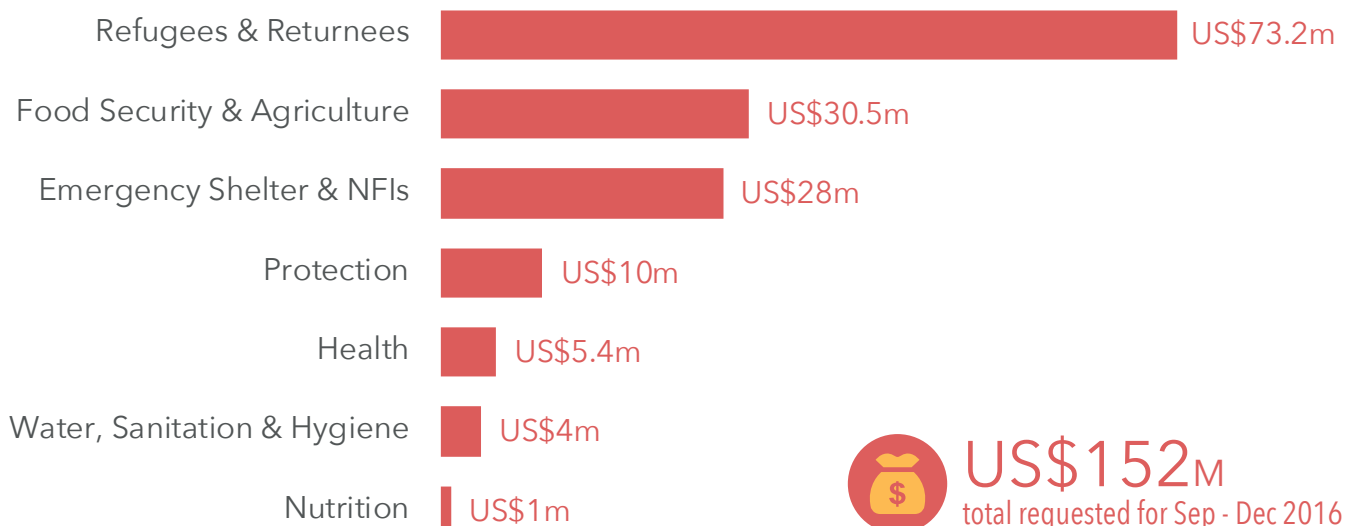
PRIORITY ACTIONS AND REQUIREMENTS

PEOPLE TARGETED



05

FINANCIAL REQUIREMENTS PER CLUSTER



US\$152M
total requested for Sep - Dec 2016



Emergency Shelter & Non-Food Items (ESNFI)

Contact information: Pia Jensen, UNHCR, ESNFI Cluster Coordinator, coord.afghanistan@sheltercluster.org
 Baqir Haidari, UNHCR, Deputy Cluster Coordinator, haidari@unhcr.org
 Zainullah Sultani, IOM, Cluster co-chair, zsultani@iom.int

ES/NFI interventions are about creating a safe environment and ensuring access to safe and adequate shelter as well as to utilities, critical infrastructure and income generating activities. This will be achieved by immediately providing the affected population with temporary shelter solutions in the form of tents for families that have no place to go, and supporting families being hosted or renting adequate accommodation.

The aim is to provide adequate shelter (tent/rent) to ensure privacy and a dignified return for all undocumented returnees. Shelter is one of the main concerns for returnees as it is the first step to establishing a healthy environment to build up livelihoods, protect food stocks and provide a safe environment for vulnerable members of the family. While tents and rent solutions will provide temporary shelter, planning and advocacy for durable solutions in the form of permanent shelters is critical to support people's capacity to recover and rebuild their lives.

\$ 28 million
required to get ready

06

To get ready to support 1 Million People on the Move, ESNFI partners are:

1. Tracking and identification of needs:
 - Providing support to DoRR for registering and tracking settlement of IDPs and returnees. One extra staff member for each of the targeted 5 provinces which are expecting the largest influx (Nangarhar, Kabul, Kunar, Logar and Laghman).
 - Providing support to large scale assessments of current shelter needs, 40 teams of 5 people each.
2. Providing temporary shelter solutions for approximately 47,000 families:
 - 29,00 tents to be procured and fitted for winter - anticipated additional support required from government for site demarcation/management.
 - 35,000 NFI kits to be provided for caseload not already assisted at border.
 - Support for rent and hosting situations for 18,000 families.

ESNFI cluster members in the 2016 Afghanistan Humanitarian Response Plan include:

ACF, ACTED, AFGHANAID, ARCS, BRAC, CAI, CARE, CARITAS, CAID, Community World Service, CONCERN, DHSA, DRC, FOCUS, ICRC, IFRC, INTERSOS, IOM, IR, IRC, Islamic Relief, Mission East, Muslim Hands, NAC, NCA, NRC, OSCEW, PIN, RI, SCI, Shelter for Life, SI, UNHabitat, UNHCR, UNICEF, UNOPS, UNWomen, WHH, WSTA.



Food Security & Agriculture (FSAC)

Contact information: Abdul Majid, Cluster Coordinator, abdul.majid@fao.org
Barat Sakhizada, NGO Co-Chair, po.caritas@gmail.com

Food insecurity in Afghanistan is on the rise, with almost 6% of Afghans being severely food insecure and 34% moderately food insecure at the national level. Continued conflict, exposure to natural hazards and economic slowdown is affecting everyone, particularly the vulnerable. An increase of food insecurity in urban areas is also being witnessed due to high pressure on labour markets resulting in scarcer work opportunities and low wages. The initial rapid assessment reported families had less than a week's worth of food stocks. Market prices in areas affected by the increased returns have increased.

The Cluster is planning to ensure that the most vulnerable food insecure conflict affected IDPs and returnees have access to basic lifesaving needs until the end of the year, including food assistance through appropriate cash or in-kind modalities, livestock asset protection for those bringing back their animals, and basic agriculture inputs to resume livelihoods where possible. The Cluster will also undertake need assessments for medium to longer term targeted support.

\$ 30.5 million
required to get ready

To get ready to support 1 Million People on the Move, FSAC partners will provide:

1. Basic food assistance through appropriate cash or in-kind modalities to 75% of the vulnerable returnees and new verified IDPs in a quick and dignified manner. The cluster is already exploring the option of easy cash transfers where markets are functional.
2. Livestock asset protection activities throughout the winter and peak lean seasons for those returning with animals. This will help to ensure basic food and nutrition security and enhance income of targeted families.
3. Basic tools and inputs during October and November to those returning to their places of origin to ensure their food security and reduce the risk of further migration.

FSAC cluster members in the 2016 Afghanistan Humanitarian Response Plan include:

Current active partners in Eastern region: WFP, FAO, DRC, NRC, Relief International, NCRO, IOM, OHW, MADERA, WHH, NEI, SHPOUL, SOFAR, DACAAR, NPORRA, SCI and IRC.

National level active FSAC partners: ACF, ABM, Afghanaid, ANCC, ACOO, ADA, ASAARO, CARE, Caritas Germany, CHA, CoAR, IRA, Medair, NCRO, NRC, OHW, ORCD, PIN, SCI, SI.



Health

Contact information: Ghulam Haidar Rafiqi, National Emergency Officer, WHO, 0705612381, 0782200378, rafiqig@who.int

Serious health implications are expected with the mass population movements, particularly with the cross-border nature of the returns. Of high risk is an influx of polio carriers, cases and unimmunized population, with high potential for outbreaks of other vaccine-preventable diseases such as measles, diphtheria and pertussis, particularly in confined and crowded settlement areas. An overload of the existing health care system is expected as relating to communicable and non-communicable diseases, maternal, newborn and child health services (vaccination, antenatal care (ANC), skilled birth attendant (SBA), postnatal care (PNC) and trauma care needs including mental health services. An increase in water-borne diseases, mainly acute watery diarrhea (AWD), bloody diarrhea, typhoid, hepatitis and cholera outbreaks are also expected, along with an increase in zoonotic diseases such as Crimean–Congo hemorrhagic fever (CCHF), rabies and anthrax. The existing health care facilities must be strengthened in order to deal with the significant increase in demands on services, to meet individual health needs and to prevent serious health outbreaks. The initial rapid assessment confirms that the large influx of refugees have placed an enormous pressure on health facilities at district and provincial level, with records of up to a 40% in patients in the last weeks.

\$ 5.4 million
required to get ready

To get ready to support 1 Million People on the Move:

The Health Cluster will work to enhance vaccination, surveillance and response, improve essential health service delivery (including trauma care), support water quality monitoring and treatment, and prevent and control zoonotic diseases. Specific priority actions will include: Measles vaccination on the Pakistan side of the border and vaccination at entry points; enhanced surveillance and outbreak response in concentrated returnee locations; service improvement in existing health facilities relating to staff, equipment, supplies and surveillance systems; advocacy for animal vaccination at entry points and enhanced surveillance and vaccination in concentrated settlement locations, and; health awareness through encashment centres. The cluster anticipates responding to 60% of the population.

Health cluster members in the 2016 Afghanistan Humanitarian Response Plan include:

AADA, ACTD, AHDS, DAO, EMERGENCY, HAADAF, HI, HN-TPO, IMC, JOHANNITER, MRCA, ORCD, PUAMI, SCI, SHRDO, TDH, WHO and WVI.



Nutrition

Contact information: Anna Ziolkovska, Nutrition Cluster Coordinator, aziolkovska@unicef.org

Currently nutrition cluster implements integrated management of acute malnutrition (IMAM) programme in all 334 provinces. In the following four months estimated additional 127,000 children under five years of age will require screening services to identify and refer acute malnutrition cases, out of them estimated 4,700 children aged 0-59 months will be in need of severe acute malnutrition (SAM) treatment and 15,200 children aged 6-59 months will be in need of moderate acute malnutrition (MAM) treatment. In addition, 2,500 pregnant and lactating women (PLW) will be in need of acute malnutrition treatment.

\$ 1 million
required to get ready

To get ready to support 1 Million People on the Move, Nutrition partners are:

1. Scaling up the coverage of nutrition IMAM services in Batikote, Behsud, Jalabad city, Khogiane, Rodat and Surkh road districts by expanding OPD-MAM and OPD-SAM programmes in 40 health facilities through increasing the capacity of staff in BPHS Health Facilities in nutrition screening, referral and treatment.
2. Provide life-saving treatment services to additional 2,500 children aged 0-59 months with SAM, 8,700 children aged 6-59 months with MAM and 1,500 PLW with acute malnutrition.

Nutrition cluster members in the 2016 Afghanistan Humanitarian Response Plan include:

AADA, ACE, ACTD, AHDS, AKHS, BARAN, BDN, CAF, CHA, HAAWC, HADAF, HN-TPO, IMC, MEDAIR, MMRCA, MoPH/PND, MOVE, MRCA, MSE, OHPM, ORCD, PU-AMI, SAF, SCA, SCI, TIKA, UNICEF, WFP, WHO, WVI.



Protection

Contact information: Matthijs Zeilstra, Cluster Coordinator, zeilstra@unhcr.org
William Carter, Cluster Co-Coordinator, william.carter@nrc.no

The upsurge in returnees aggravates the existing humanitarian crisis, leading to increased protection concerns. Unprepared departure from Pakistan increases family vulnerability (selling assets below cost, no planned coping strategies) and often ends in secondary displacement into urban areas due to insecurity in places of origin. Lack of support upon arrival, particularly for undocumented returnees, raises the incidence of negative coping mechanisms (child labour, early marriage, child recruitment) and existing services are overstretched. Schools and housing markets cannot absorb the influx. Lack of civil documentation hinders access to services, land, or justice. Female headed households or unaccompanied minors are at risk with male family members detained or in search of work. Increasing internal displacement and escalating conflict demands an immediate protection response, supplemented by longer-term interventions, such as land allocation, enhancing self-protection capacities.

\$ 10 million
required to get ready

10

To get ready to support 1 Million People on the Move, Protection partners are:

1. Engaging in protection/return monitoring in areas of high return/displacement, monitoring of children at border crossing/in detention, implementing family tracing services (deportees, unaccompanied minors; separated families), information provision, psychological first aid, mine risk education, advocacy on behalf of affected populations.
2. Providing protection services including community-based assistance with civil documentation, child friendly spaces/temporary learning spaces, GBV prevention and multi-sectoral support for survivors, dignity kits, psychosocial counselling, strengthening referral systems, support for extra vulnerable families through targeted cash assistance.
3. Carrying out mine/ERW surveillance and clearance in affected communities and settlements/sites designated by the authorities for landless returnees and displaced, supporting community protection and feedback mechanisms, working towards protection and gender mainstreaming in service provision.

Protection cluster members in the 2016 Afghanistan Humanitarian Response Plan include:

ACSFo, ACTED, AECC, AEPO, AfghanAid, ANAFAR, APA, AWC, AWEC, CFA, CiC, DRC, Hagar, HARO, HI, HNI-TPO, HRDA, HSOA, IMC, IRA, IRC, MEDICA, NRC, OHW, PARSA, SCI, Tabish, TdH, TLO, UNFPA, UNHABITAT, UNHCR, UNICEF, UNMACCA, VWO, WADAN, WASSA, WAW, WCC, WHH, WSTA, WVI, YHDO.



Water, Sanitation & Hygiene (WASH)

Contact information: Ramesh Bhusal, Cluster Coordinator, : +93 (0) 798507654, rbhusal@unicef.org
 Frederic Patigny, Cluster Co-Lead, patigny@who.int
 Sub-national level: Mohammad Amin, East-Regional Manager,
 Jalalabad, DACAAR, +93 (0) 799 382 606, east.rm@dacaar.org

Millions of already vulnerable people in Afghanistan are at risk of contracting diarrhea, typhoid, polio and other water-borne and contagious diseases due to poor hygiene and lack of access to clean water and sanitation. Based on the HRP 2016, there is a funding shortfall of 17% for WASH in emergencies, which indicates an existing gap of 146,000 people for WASH support out of the estimated 860,000 people in need of emergency WASH assistance. With some partners expected to receive CHF funding from the 2nd standard allocation

soon, this gap is expected to reduce, however the Cluster estimates a gap of USD \$4 million to meet the urgent WASH needs of the most vulnerable undocumented returnees, estimated to be 160,000 or 40% of the anticipated caseload. Without adequate resources, the health and wellbeing of the most vulnerable returnees are at risk.

\$ 4 million
 required to get ready

To get ready to support 1 Million People on the Move, WASH partners are:

1. Pre-positioning of WASH supplies in strategic locations: critical supplies, including Family Hygiene Kits (buckets, jerry cans, soap, female dignity and basic hygiene items) and Family Water Kits (bucket, jerry can, chlorine tablets and soap) for immediate distribution to families on the move or in informal settlements.
2. Establishing water supply and sanitation systems in informal settlements or camp-like settings, including water treatment units, water tanks, tap stands, latrine and bathing facilities and establishment, rehabilitation or expansion of water supply (also tankering) and distribution systems.

WASH cluster members in the 2016 Afghanistan Humanitarian Response Plan include:

ACF, ACTED, ARCS, CAID, CARITAS, CHA, DACAAR, DRC, IMC, IRC, MEDAIR, NCA, RCDC, SCI, SI, SOLIDARITES, UNHCR, UNICEF, ZOA



Refugee and Returnee Response Plan

Contact information: Marguerite Nowak, UNHCR, External Relations Officer, nowak@unhcr.org
 Nicholas Bishop, IOM, Project Development Officer nbishop@iom.int

Since mid-July 2016 the rates of Afghans returning, both registered refugees and undocumented, suddenly skyrocketed. In August, nearly 60,000 registered Afghan refugees returned from Pakistan – seven times higher than the first six months of the year, while over 70,000 undocumented Afghans also returned, from Pakistan. This sudden increase in return was not anticipated by humanitarian agencies and has coincided with the drastic deterioration in the protection and political environment for Afghans within Pakistan, both Proof of Residency (PoR) card-holders and the undocumented. The current surge in return far exceeds the planning figures and resources in the 2016 HRP and is expected to continue. At the same time, the overall vulnerability of the population has increased as a result of their unanticipated departures from the asylum country; coupled with the already over-stretched absorption capacity in Afghanistan and the lack of resources, concerns are raised of a humanitarian crisis and secondary displacement as winter approaches.

\$ 73.2 million
 required to get ready

12

To get ready to support 1 Million People on the Move, Refugee and Returnee Chapter partners are planning to:

1. Provide streamlined arrival services at the border including registration and profiling. Cash grants will be paid to returnees to cover immediate humanitarian needs for food, water, health services and winter assistance. Given the spread of the conflict and lack of access in many parts of the country, the cash grant is the preferred mechanism for aid.
2. In coordination with WFP, track and monitor undocumented returnees past the point of entry to final destination in order to understand where returnees are going and ensure the provision of timely humanitarian assistance in the form of shelter, food, WASH, health and livelihoods.
3. Provide immediate humanitarian assistance to returnees through the Encashment Centres, Transit centres and in high return areas including initial accommodation, food, NFIs, hygiene kits, health services, transportation assistance, special support for Persons with Specific Needs, MRE and referral services in Afghanistan.

Refugee and Returnee Chapter members in the 2016 Afghanistan Humanitarian Response Plan include:

ACTED, ARCS, CARE, CoAR, DACAAR, DDG, DRC, FAO, HNI-TPO, IMC, IOM, IRC, Johanniter, NCA, NRC, Solidarites International, TLO, UNFPA, UNICEF, UNHCR, UNMAS/MACCA, WFP, WHO

Please note that UNHCR is issuing a supplementary appeal for the USD 104.7 million required until the end of the year to support the repatriation, including USD 64.2 million in supplementary requirements (USD 53.5 million for Afghanistan and USD 10.7 million for Pakistan). UNHCR supplementary budget requirements for Afghanistan are reflected in this flash appeal.

IN THE LONGER TERM

Prolonged IDPs: as displacement becomes more widespread and the ongoing conflict and changing control of territory prevents people from returning home, the number of families enduring prolonged displacement is increasing. While minimal monitoring and follow up of this population group has been systematically undertaken in the past, in the end of 2016 an assessment is planned to estimate the humanitarian and protection needs among this population. Specific resources should therefore be committed to provide a response to identified needs for **at least 250,000 anticipated individuals**. Shrinking humanitarian financing and the resulting sharpening of the focus of humanitarian action towards emergency response places even greater onus on the Afghan Government to systematically reduce the overall burden of people in humanitarian need. Given the increasing rate of conflict displacement, concrete progress must be seen in implementing the 2013 National IDP Policy both in terms of Government leadership and coordination of response to immediate needs of IDPs; also in ensuring that prolonged displaced have the opportunity to return, integrate locally or relocate elsewhere, and that they are supported to do so through explicit inclusion in development plans.

Long term solutions: this Flash Appeal focuses on covering the most immediate and urgent needs of vulnerable returnees, displaced communities and host communities until the end of the year. Mid and longer term solutions need to be sought for their further needs.

This includes a process of land allocation for these communities, particularly in semi-urban areas around Jalalabad and Kabul, which should not lead to the de facto and ill-advised establishment of long-term camps. The process should be sustainable, transparent, equitable, secure and swift. Development plans for the preparation of these lands should accompany the process.

Moving forward, the Government and the international community must ensure immediate basic needs of the population are addressed in parallel to establishing a secure and economically independent country. This requires sustained and meaningful multi-year investment from the Government of Afghanistan and donor countries in order to address structural failings and to ensure the long-term viability of the country. Humanitarian and development actors need to strengthen their cooperation to move from 'managing crises' (natural or man-made) to 'managing risk' in order to build resilient communities. In parallel, it is critical that humanitarian needs arising from the ongoing conflict are kept high on the radar of the international community. In a protracted crisis such as Afghanistan, with widespread and entrenched chronic needs, humanitarian actors have shouldered the burden to address acute humanitarian needs, which are further aggravated by lack of basic services. Government and development partners need to step up their engagement to address underlying causes of acute needs.

Advocacy: UN Agencies, donors, key political actors with political leverage within Pakistan, civil society and other stakeholders should be part of a collaborative strategy to mitigate the dramatic rise in push factors currently influencing return decision-making. It should highlight the importance of the voluntary character of repatriation of refugees. Respecting voluntariness of repatriation is key to sustainability of reintegration. For both refugees and undocumented Afghans, return should be humane and in conditions of safety and dignity, in line with international standards. In the context of Afghanistan, return should also be gradual, as the current trends will severely overstretch existing absorption capacity and negatively impact the sustainability of return.



GUIDE TO GIVING

CONTRIBUTING TO THE HUMANITARIAN RESPONSE PLAN



To see the country's flash appeal, humanitarian needs overview, humanitarian response plan, and monitoring reports, and donate directly to organizations participating to the plan, please visit :

www.humanitarianresponse.info/operations/afghanistan

DONATING THROUGH THE CENTRAL EMERGENCY RESPONSE FUND (CERF)



CERF provides rapid initial funding for life-saving actions at the onset of emergencies and for poorly funded, essential humanitarian operations in protracted crises. The OCHA-managed CERF receives contributions from various donors – mainly governments, but also private companies, foundations, charities and individuals – which are combined into a single fund. This is used for crises anywhere in the world. Find out more about the CERF and how to donate by visiting the CERF website:

www.unocha.org/cerf/our-donors/how-donate

DONATING THROUGH THE COUNTRY HUMANITARIAN FUND



The Afghanistan Humanitarian Fund is a country-based pooled fund (CBPF). CBPFs are multi-donor humanitarian financing instruments established by the Emergency Relief Coordinator (ERC) and managed by OCHA at the country level under the leadership of the Humanitarian Coordinator (HC). Find out more about the CBPF by visiting the CBPF website:

www.unocha.org/what-we-do/humanitarian-financing/country-based-pooled-funds

For information on how to make a contribution, please contact

chf afg@un.org

IN-KIND RELIEF AID



The United Nations urges donors to make cash rather than in-kind donations, for maximum speed and flexibility, and to ensure the aid materials that are most needed are the ones delivered. If you can make only in-kind contributions in response to disasters and emergencies, please contact:

logik@un.org

REGISTERING AND RECOGNIZING YOUR CONTRIBUTIONS



OCHA manages the Financial Tracking Service (FTS), which records all reported humanitarian contributions (cash, in-kind, multilateral and bilateral) to emergencies. Its purpose is to give credit and visibility to donors for their generosity and to show the total amount of funding and expose gaps in humanitarian plans. Please report yours to FTS, either by email to fts@un.org or through the online contribution report form at <http://fts.unocha.org>

This document is produced on behalf of the Humanitarian Country Team and partners.

This document provides the Humanitarian Country Team's shared understanding of the crisis, including the most pressing humanitarian needs, and reflects its joint humanitarian response planning.

The designation employed and the presentation of material on this report do not imply the expression of any opinion whatsoever on the part of the Humanitarian Country Team and partners concerning the legal status of any country, territory, city or area or of its authorities, or concerning the delimitation of its frontiers or boundaries.



www.unocha.org/afghanistan



www.humanitarianresponse.info/operations/afghanistan



@OCHAAfg