



Situation Report

Adamawa State Ministry of Health



TTITLE	2021 Cholera Outbreak Situation Report
SERIAL NUMBER	07
EPID-WEEK	34
DATE	25th August, 2021

Highlights

- 30 new suspected cases with 2 deaths have been reported within the reporting week (Yola North=15 with 1 death, Girei=15 cases with 1 death)
- Total suspected case count now stands at 114 with 5 deaths (CFR=4.4 %)
- NCDC has donated 350 cholera RDT,100 pieces of petri dishes, 1 tin of triple sugar and 1 tin of nutrient agar

Epidemiological Summary

The total number of cases reported as at **25th August, 2021** stands at 114 suspected cases with 5 deaths (CFR=4.4%), Girei reported 38 cases with 2 deaths (CFR= 5.3%); Yola North reported 19 suspected case with 1 death (CFR= 5.3%), Yola South reported 4 suspected cases with 0 death (CFR= 0%), Shelleng reported 17 cases with 0 death (CFR=0%), Fufore reported 2 cases with 0 deaths (CFR=0%) and Gombi reported 34 cases with 2 death (CFR=5.9%). Of the 114 suspected cases, 15 revealed 01 serotype.

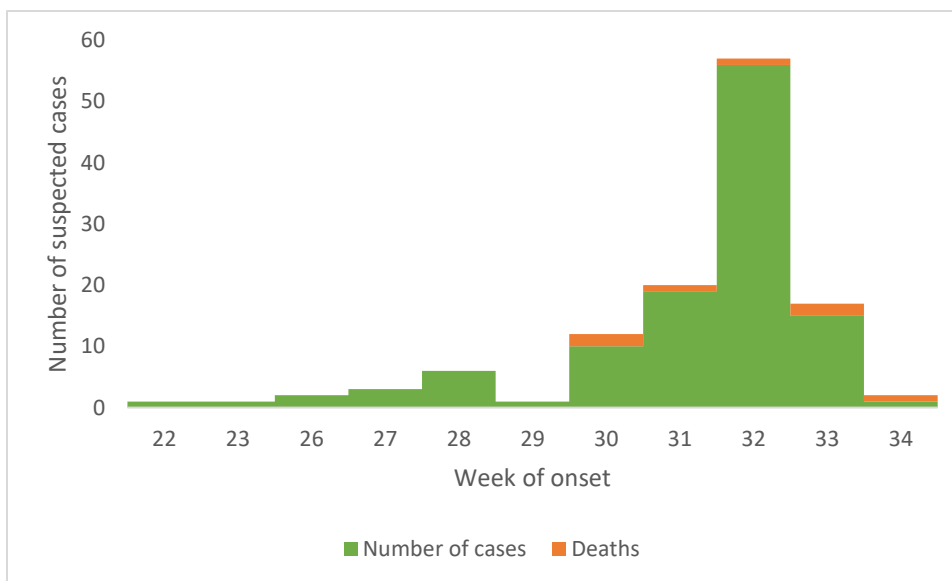


Figure 1: Epi curve of suspected cases of cholera and deaths in Adamawa state as at 24th August 2021

	Yola North	Girei	Yola South	Shelleng	Gombi	Fofore	Total
Cases							
New suspected	15	15	0	0	0	0	30
Cumulative	19	38	4	17	34	2	114
Deaths							
New deaths	1	1	0	0	0	0	2
Cumulative deaths	1	2	0	0	2	0	5
Laboratory*							
Specimens collected	19	19	1	0	4	2	45
Specimen (Culture +ve)	11	14	1	0	4	1	31
Specimen (O1 serotype)	1	10	1	0	3	1	16

Table 1: Number of cases, deaths and samples tested for Cholera in Adamawa State, as at **25th August, 2021**. (* samples collected will be updated)

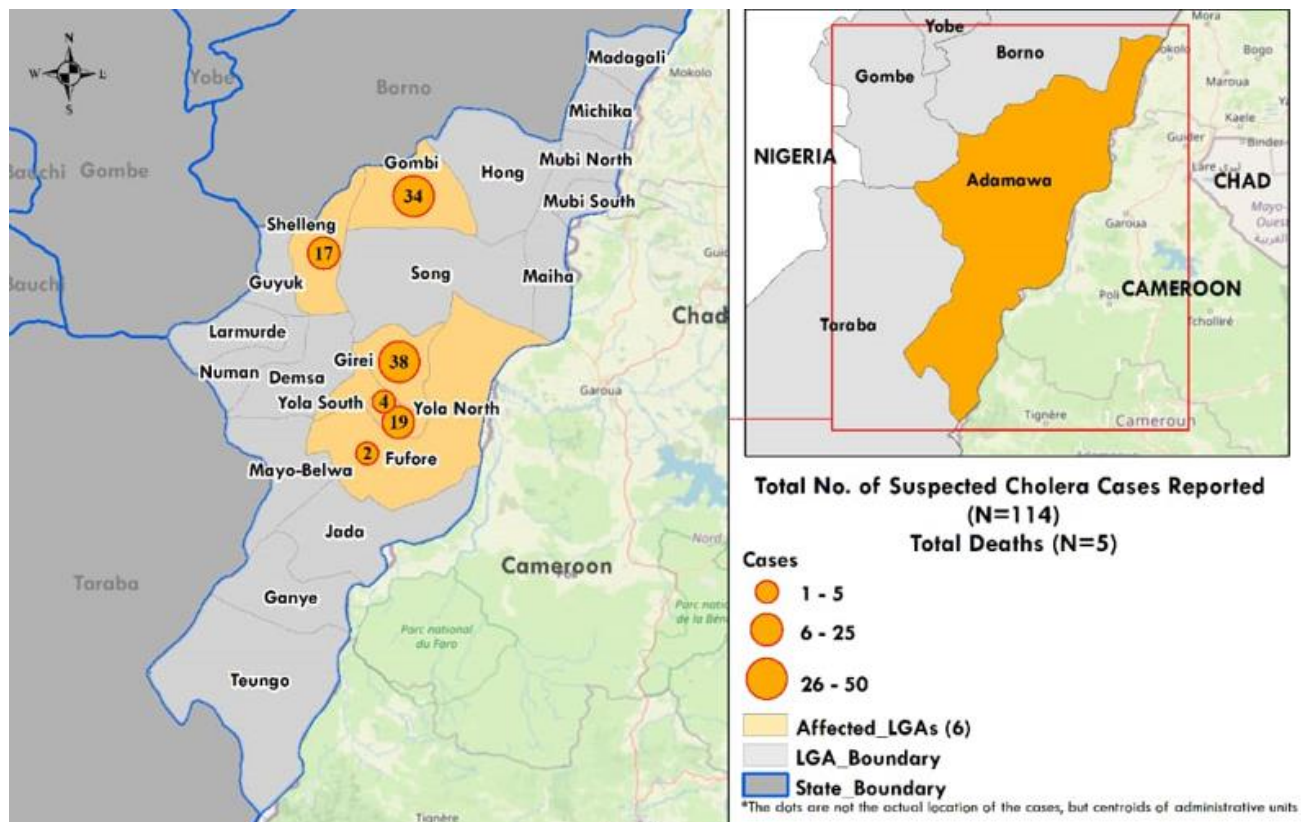


Figure 2: Map of Adamawa State showing Cholera affected LGAs as at 25th August, 2021

Activity	Girei	Yola North	Yola South	total	Partners
No of water points mapped	53	81	48	182	IRC
No of water points tested	53	81	48	182	IRC
Number and % of contaminated water points	51 (31%)	69 (42%)	46 (27%)	166 (91%)	-
Number and % of water points being chlorinated	15 (13%)	17 (14%)	0 (0%)	32 (27%)	SI, IOM, NRC
Number and % of water points not being chlorinated	20 (17%)	37 (31%)	31 (25%)	58 (73%)	-

Table 2: Distribution of Water point chlorination in the affected LGAs in Adamawa State, as at August 25th 2021.

Coordination

- The coordination meeting between State response teams and Development partners holds Mondays and Thursdays
- Pillar meetings of partners & government is ongoing
- Generated reports and action points are shared with Government Agencies and Development partners
- NCDC has donated 350 cholera RDT, 100 pieces of petri dishes, 1 tin of triple sugar and 1 tin of nutrient agar
-

Surveillance and Laboratory

- 30 new suspected cases with 2 deaths have been reported DSNOs are line listing suspected Cases and collecting sample
- 13,695 Households have so far been visited by the 3 WHO supported ACS teams in 11 hotspots communities of Yola North, Yola South & Girei LGAs.
- Regular hot spot analysis has shared to stakeholders to guide the response

Case management

- 11 cases on admission in the CTC Specialist Hospital Yola and 0 at General Hospital Garkida
- 1 death recorded at the CTC
- No stipends for the contracted staff who work in the SSH CTC after 4 weeks of work

Wash

- Additional 48 water points mapped and tested last week for faecal contamination by IRC, making a total of 182 mapped water points. (See table 2 above).
- Chlorination of 32 water points ongoing by SI (532,680 liters), NRC, IOM, and ICRC in Girei and Yola North LGAs.
- House-to-House Hygiene Promotion and community sensitisation/campaigns ongoing by SI, IRC 1,472 persons (923M and 549 F), NRC, IOM and ICRC teams in Girei and Yola North LGAs.

- Desludging of filled up latrines in 7 IDPs Host communities ongoing by SI, to mitigate the risk of outbreak of AWD.
- Disinfection of infected Household latrines and public dump sites by IOM, SI and NRC ongoing in communities of Girei and Yola North LGAs.
- Radio jingles on prevention of cholera by IRC and ICRC ongoing.

Risk Communication



Logistics

- NCDC has donated 350 cholera RDT, 100 pieces of petri dishes, 1 tin of triple sugar and 1 tin of nutrient agar

Challenges

- Funds to support outbreak response is yet to be released by the state Government
- LGA level coordination needs to be strengthened
- Lack of stipends to support Case Managers in the CTC in SSH & GH Garkida
- Ambulance services still a challenge especially for distant locations
- Some of the health facilities in affected LGAs have inadequate manpower
- Most referred cases from PHCs are coming in critical state
- Most new Health workers across LGAs in PHCs have not been trained on cholera management and the old staff have not been re-trained.
- Inadequate Active case search in the affected communities
- Poor sanitation in affected areas
- Shortage of Aquatabs for household distribution to treat household drinking water.
- Shortage of IEC materials.
- Open defecation still ongoing in some of the affected areas
- Inadequate supply of IV fluids and other WASH commodities

Way forward

- Set up CTU in affected LGAs
- Solicit for funds to train healthcare workers in the affected and at risk LGAs
- Continue to engage partners for more support across thematic areas
- Share reports timely with NCDC and solicit for support of response material to be supplied to the state.
- Send out advisory on cholera to places of worship and schools
- Solicit for the collaborative support of other ministries in the state to curb the outbreak
- Solicit for financial support from the state Government to address the response
- Deliberate with the ADPHCDA & ES for possible temporary posting of HCWs to facilities with inadequate manpower