



Situation Report

Adamawa State Ministry of Health



TTITLE	2021 Cholera Outbreak Situation Report
SERIAL NUMBER	06
EPID-WEEK	33
DATE	22nd August, 2021

Highlights

- 22 new suspected cases with one death have been reported within the reporting week (Gombi=19 with 1 death, Shelleng=1, Fufore=2)
- A new LGA, Fufore has reported 3 new suspected cases
- Total suspected case count now stands at 84 with 3 deaths (CFR=3.6 %)
- WHO donated 20 cartons of Ringers Lactate, 10 Cary Blair & 10 RDT Kits for cholera to State Ministry of Health and Human Services

Epidemiological Summary

The total number of cases reported as at **22nd August, 2021** stands at 84 suspected cases with 3 deaths (CFR=3.6%), Girei reported 23 cases with 1 death (CFR= 4.3%); Yola North reported 4 suspected case with 0 death (CFR= 0%), Yola South reported 4 suspected cases with 0 deaths (CFR= 0%), Shelleng reported 17 cases with 0 death (CFR=0%), Fufore reported 2 cases with 0 deaths (CFR=0%) and Gombi reported 34 cases with 2 death (CFR=5.9%). Of the 84 suspected cases, 15 revealed 01 serotype.

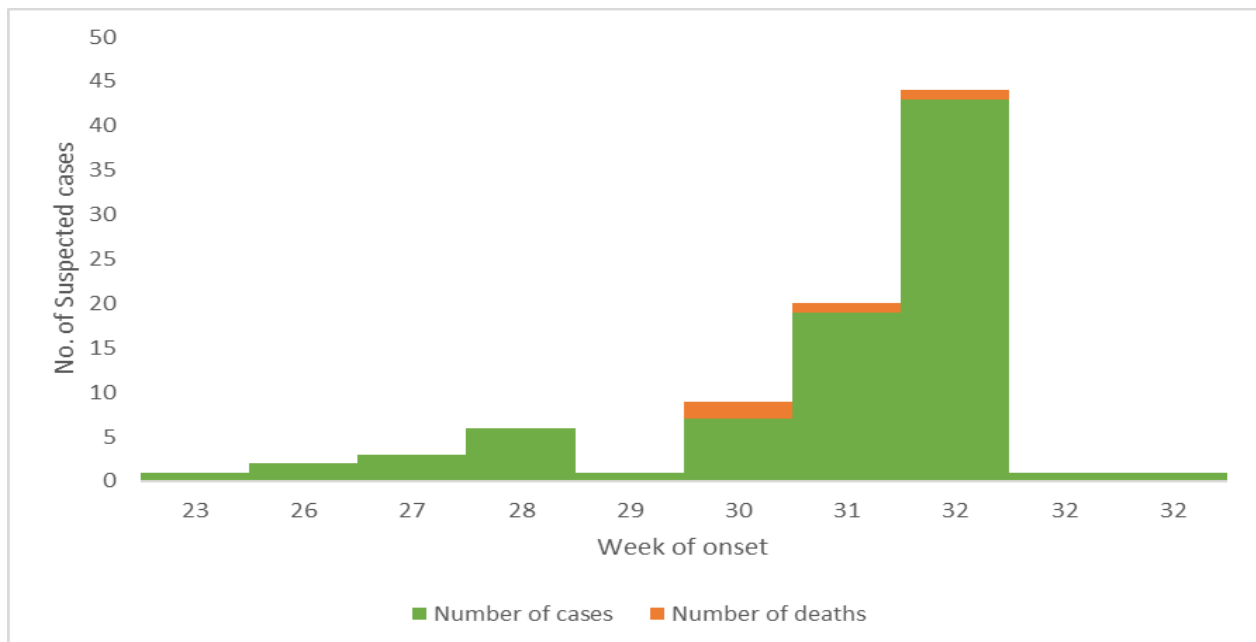


Figure 1: Epi curve of suspected cases of cholera and deaths in Adamawa state as at 22nd August 2021

	Yola North	Girei	Yola South	Shelleng	Gombi	Fofore	Total
Cases							
New suspected	0	0	0	1	19	2	22
Cumulative	4	23	4	17	34	2	84
Deaths							
New deaths	0	0	0	0	1	0	1
Cumulative deaths	0	1	0	0	2	0	3
Laboratory*							
Specimens collected	2	11	0	0	4	2	17
Specimen (Culture +ve)	1	11	0	0	4	1	17
Specimen (O1 serotype)	1	10	0	0	3	1	15

Table 1: Number of cases, deaths and samples tested for Cholera in Adamawa State, as at **22nd August, 2021**. (* samples collected will be updated)

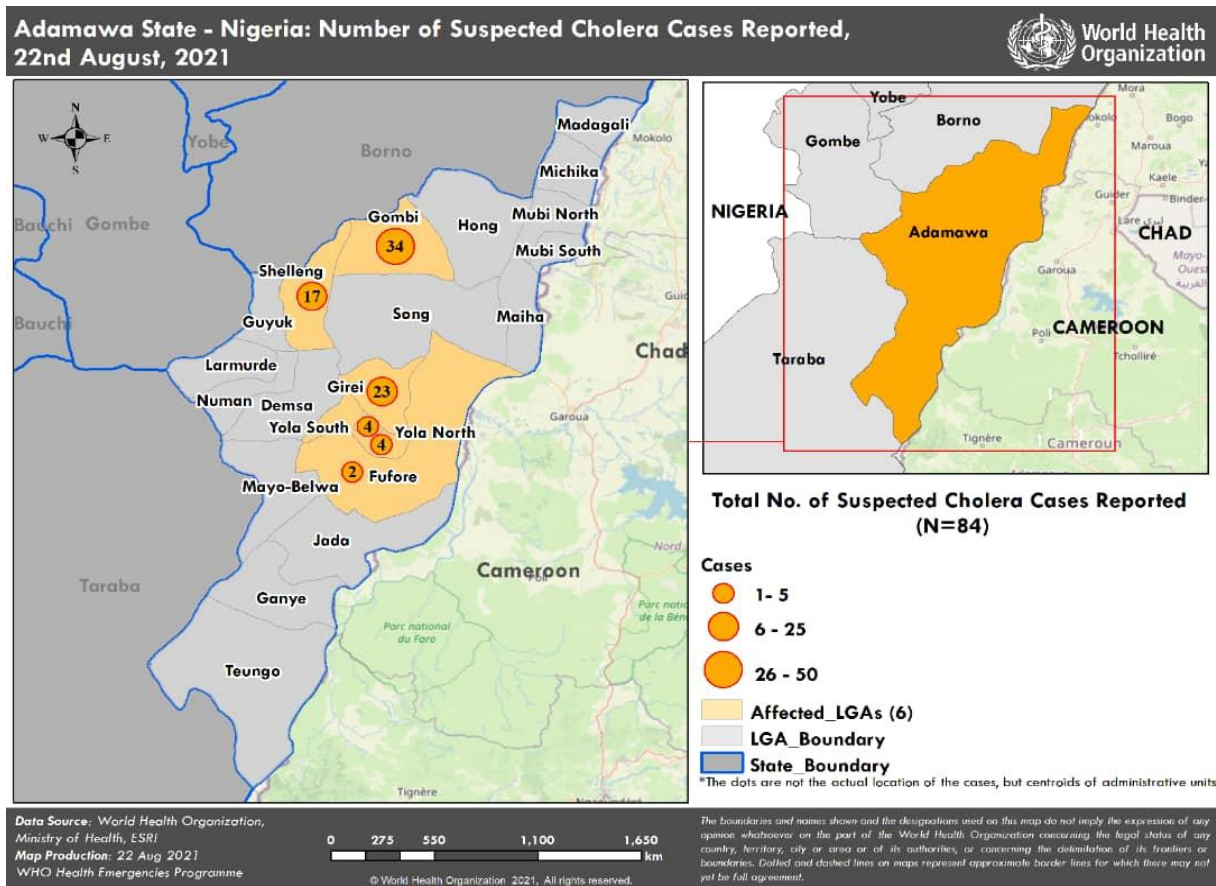


Figure 2: Map of Adamawa State showing Cholera affected LGAs as at 22nd August, 2021

Activity	Girei	Yola North	Yola South	total	Partners
No of water points mapped	37	65	32	134	IRC
No of water points tested	37	65	32	134	IRC
Number and % of contaminated water points	35 (29%)	54 (45%)	31 (26%)	120 (88%)	-
Number and % of water points being chlorinated	15 (13%)	17 (14%)	0 (0%)	32 (27%)	SI, IOM, NRC
Number and % of water points not being chlorinated	20 (17%)	37 (31%)	31 (25%)	58 (73%)	-

Table 2: Distribution of Water point chlorination in the affected LGAs in Adamawa State,2021.

Coordination

- The coordination meeting between State response teams and Development partners holds on Tuesdays and Thursdays every week at the state Ministry of Health and Human Services.
- Generated reports and action points are shared with Government Agencies and Development partners
- NCDC is processing sending of response commodities from Abuja
- WHO Zonal Coordinator for the North East was on ground to support the cholera outbreak response

Surveillance and Laboratory

- 22 new suspected cases with one death were reported
- One new LGA (Fufore) affected within the reporting week
- DSNOs are line listing suspected Cases and collecting samples
- 12,393 Households have so far been visited by the 3 ACS teams in 10 hotspots communities of Yola North, Yola South & Girei LGAs.

Case management

- 6 cases on admission in the CTC Specialist Hospital Yola and 0 at General Hospital Garkida
- 22 patients were discharged from CTC within the reporting week

Wash

- Additional 32 water points mapped and tested last week for faecal contamination by IRC, making a total of 134 mapped water points. (See table 2 above).
- Chlorination of 32 water points ongoing by SI (532,680 liters), NRC, IOM, and ICRC in Girei and Yola North LGAs.
- House-to-House Hygiene Promotion ongoing by SI (2,535 persons, 375HHs reached), NRC, IOM and ICRC teams in Girei and Yola North LGAs.
- IRC conducted Hygiene Promotion sensitisation and campaigns in Settlements of Doubeli, Badarisa and Modire Modire Wards in Girei and Yola North LGAs.

- Disinfection by SI conducted in infected 15HHs and 200 neighboring HHs, 14HHs latrines were disinfected.
- 1,384 cholera and hygiene kits distributed by SI (15) and NRC (1,369) to vulnerable HHs in cholera hotspot communities.
- Desludging of filled up latrines in 2 IDPs camps and 9 IDPs Host communities ongoing by SI, to mitigate the risk of outbreak of AWD.
- 67 blocks of latrines and 67 blocks of shower rooms constructed by NRC in Fufore IDPs camp and 11 IDPs host communities to create access to safe sanitation facilities.
- 1 dysfunctional HPBHs rehabilitated by NRC in Fufore IDPs camp.
- Disinfection of infected Household latrines and public dump sites by IOM and NRC ongoing in communities of Girei and Yola North LGAs.
- Distribution of IEC materials and Aquatabs at households by ICRC ongoing.
- Radio jingles on prevention of cholera by IRC and ICRC ongoing.
- PLANNED WASH ACTIVITIES:
- Distribution of cholera prevention and discharge kits to vulnerable persons/communities by NRC and SI.
- Rehabilitation of 1 dysfunctional HPBH by NRC in Namtari
- ES of affected LGs to carry out advocacy visits to opinion leaders on the need for community members to carry out environmental sanitation.
- Goal Prime (an NGO) to commence mobile van public hygiene promotion next week.
-

Risk Communication



Logistics

- Gross shortage of response commodities at the CTC
- WHO donated 20 cartons of Ringers Lactate, 10 Cary Blair & 10 RDT Kits for cholera to State Ministry of Health and Human Services
- Commodities are to be centrally supplied to the CTC store and to keep records of all requisition

Challenges

- ACS is still grossly inadequate
- Lack of stipends to support Case Managers in the CTC in SSH & GH Garkida
- Training of case managers is yet to be done in Yola, Shelleng & Garkida
- Risk communication and community engagements needs more partners presence & funding
- Grossly inadequate sanitation in affected areas
- Shortage of Aquatabs for household distribution to treat household drinking water.
- Inadequate water chlorinators
- Open defecation still ongoing in some of the affected areas
- Inadequate supply of Iv fluids and other WASH commodities

Way forward

- Continue to engage partners for more support across thematic areas
- Share reports timely with NCDC and solicit for support of response material to be supplied to the state.

- Solicit for the collaborative support of other ministries in the state to curb the outbreak
- Solicit for financial support from the state Government to address the response
- Follow-up with NCDC support of response commodities