



Situation Report of Cholera Outbreak in Adamawa State
Week 45: Reported on 12th November, 2018
Reporting period: 5th - 11th November, 2018
Adamawa State Ministry of Health



Highlights:

- 8 new cases were reported within the week. 7 from Yola North LGA, 1 from Yola South.
- No new case from Girei and Fufore LGAs
- No death was reported within the week.
- Total case count now stands at 2,749 with 41 deaths. CFR is 1.5%

Epidemiological summary

The total number of cases reported as at 11th October, 2018 stands at 2,749 cases with 41 deaths (CFR=1.5%). Yola North has 259 cases with 6 deaths (CFR= 2.3%); Fufore has 687 cases with 7 deaths (CFR = 1.0%); Girei has 17 cases with no death (CFR=0%); Yola South has 50 cases with 1 death (CFR=2.0%); Hong has 9 cases with no death (CFR = 0%); Maiha has 170 cases with 1 death (CFR = 0.6%); Mubi North has 639 cases and 14 deaths (CFR=2.2%); while Mubi South has 918 cases with 12 deaths (CFR = 1.3%). 42 out of 73 culture samples taken yielded positive growth.

	Yola North	Yola South	Girei	Fufore	Mubi North	Mubi South	Hong	Maiha	Total
Cases									
New suspected cholera cases	7	1	0	0	0	0	0	0	8
Cumulative suspected cholera cases	259	50	17	687	639	918	9	170	2749
Deaths									
New deaths	0	0	0	0	0	0	0	0	0
Cumulative deaths	6	1	0	7	14	12	0	1	41
Laboratory									
Number of specimens tested (RDT)	24	2	0	44	35	40	3	16	164
Specimen positive RDT	13	1	0	20	26	28	1	13	102
Number of specimens cultured	16	4	3	6	7	21	2	18	73
Specimen positive cultured	7	1	1	1	4	16	1	14	42

Adamawa State: Reported Cholera Cases by Week, WK01- 45 2018

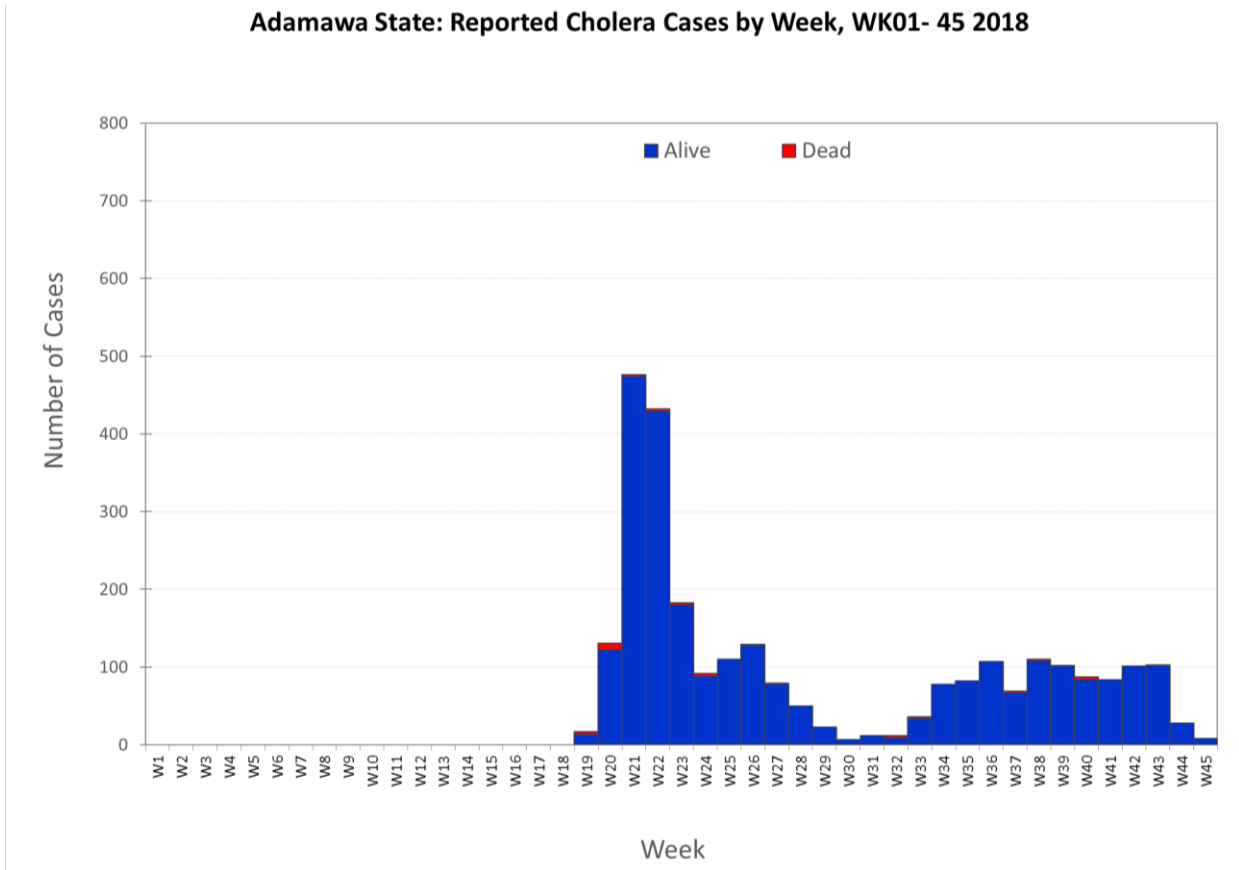


Fig1. Weekly trend of cholera cases, WK 1 – WK 45, 2018

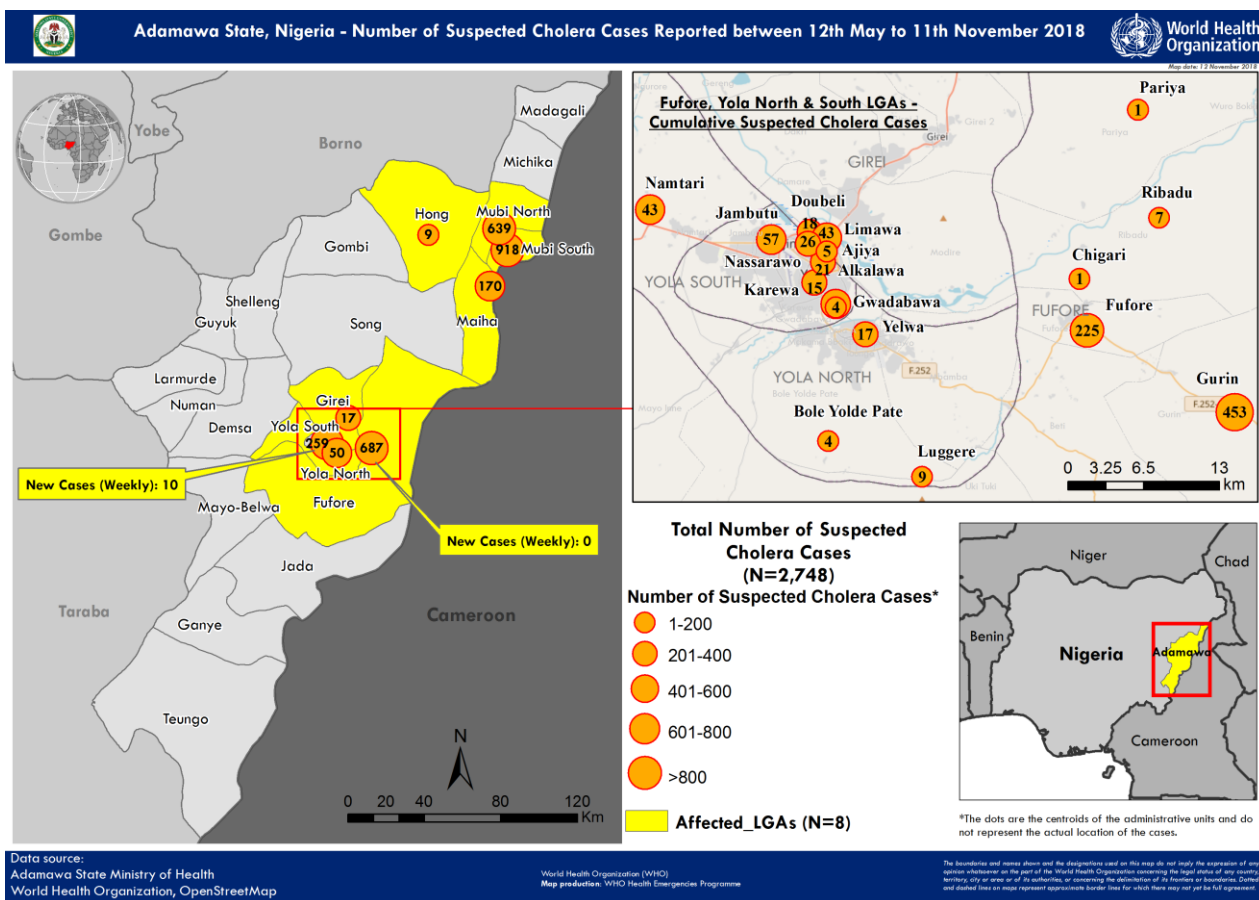


Fig 2. Map of Adamawa showing suspected cases of cholera

Response

1. Coordination

- EOC meetings scaled down to twice a week. Mondays and Thursdays.
- Planning meeting with FMC and Specialist Hospital for clinician sensitization

2. Surveillance

- 25 teams of volunteers supported by WHO conduct house to house search for new cases of suspected cholera in Yola North, Yola South and Girei.
- Active case search teams supported by WHO visited 6,278 households in 31 settlements of Girei, Yola North and Yola South LGAs
- 6 suspected cases were seen and referred to the treatment centre.

3. Case Management

- 8 patients were seen in the treatment centres. 1 was admitted and treated as in-patients while the remaining were outpatients.
- 1 patient is currently on admission

	Yola North	Yola South	Girei	Fufore	Mubi North	Mubi South	Hong	Maiha	Total
Admissions									
New admissions	1	0	0	0	0	0	0	0	1
New Discharges	0	0	0	0	0	0	0	0	0
Patients currently on admission	1	0	0	0	0	0	0	0	1

4. WASH

- IRC supplied 30 pieces of mop sticks, 30 pieces of soft brooms and 30 pieces of hard brush to be shared among PHCCs in settlements reporting large number of suspected cases
- IRC supplied 40 cholera discharge kits and 1 carton of ORS to the CTC in Yola.
- 18,655 liters of water was chlorinated at Rumde and Limawa wards of Yola North LGA
- IRC supplied 5,000 copies of cholera IEC materials to Yola North LGA

5. Social mobilization and risk communication

- 42 IRC supported community health volunteers visited 210 households and sensitized 1,127 persons in Yola North and Fufore LGAs.