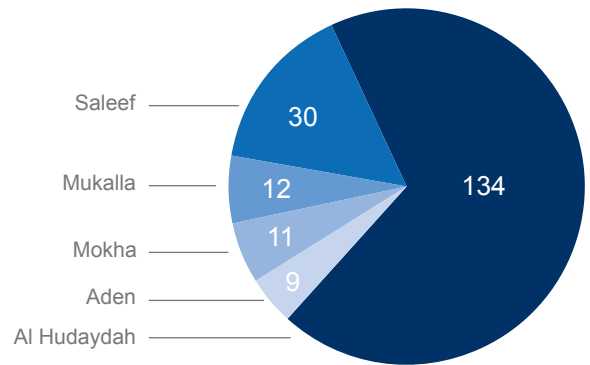
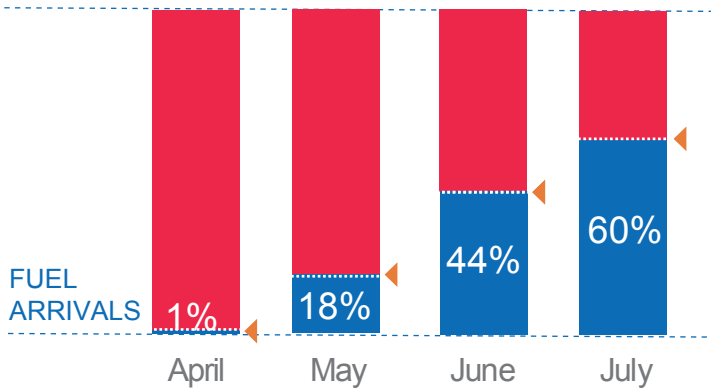


Importation of grains has remained above trend yet food prices remain high and unavailable in many locations. Fuel imports have increased but are still not at the level required to power basic social services, including water treatment plants and hospitals.



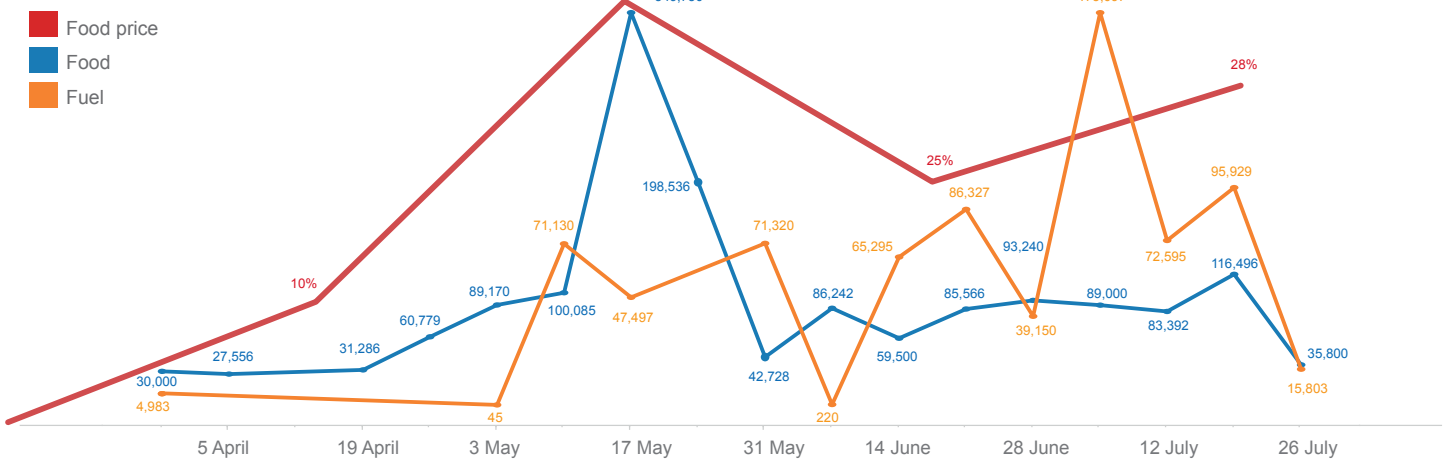
**544,000 MT** ESTIMATED MONTHLY FUEL NEED\*

## Number of ship arrivals by port

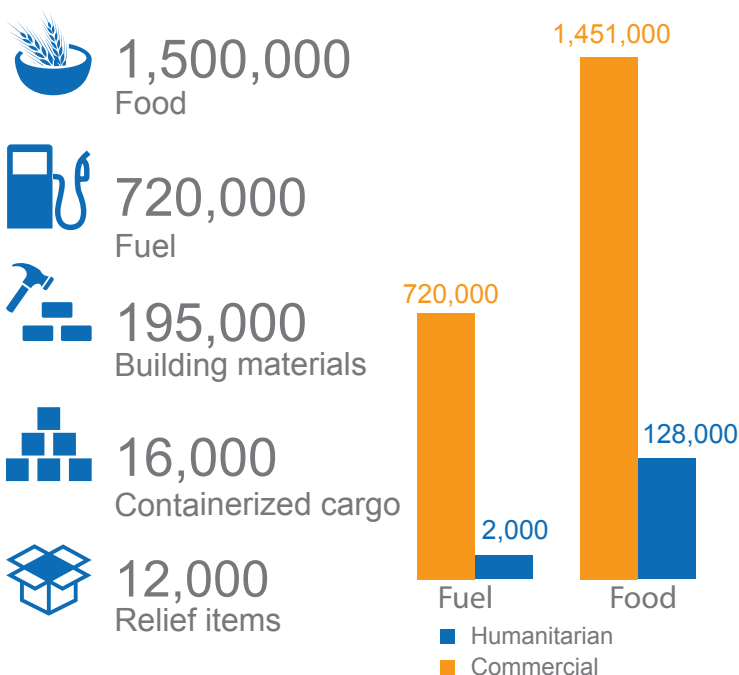


Number of ships since 1 April - 31 July (only Humanitarian dhows)

## Trends in imports of food and fuel (29 March to 31 July in metric tons)



## Commodity imports (1 April to 31 July in metric tons)



## Average delays in entering port (days)



## Average duration offloading in port (days)

