

HIGHLIGHTS



14 million people in 19 out of 22 governorates are either under Crisis (IPC Phase 3) or Emergency (IPC phase 4).⁽²⁾



2.8 million displaced population of concern.⁽¹⁾



Over **760,000** IDPs are in movement trying to return to their areas of origin and require support as they seek to re-establish their livelihoods.⁽¹⁾



64% of the total IDPs are hosted in five governorates that are either in Crisis (IPC Phase 3) or Emergency (IPC Phase 4).^{(1) (2)}

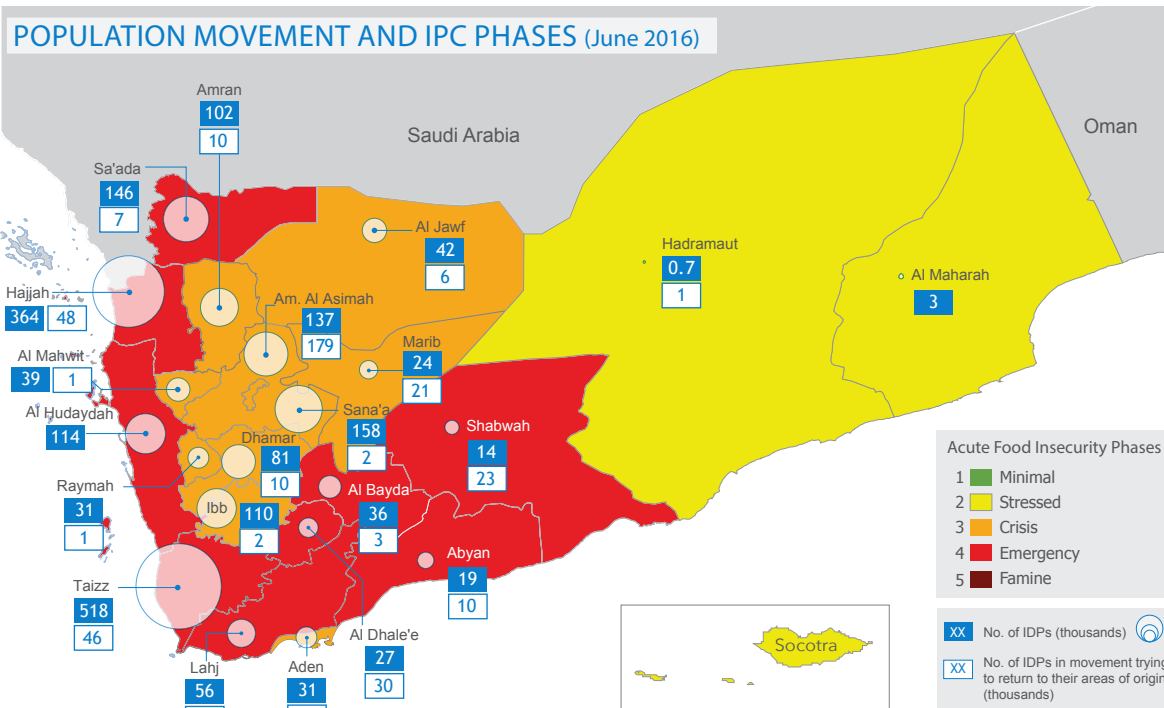


83% of the total IDPs are in hosted settings, increasing the burden on the host community.⁽¹⁾



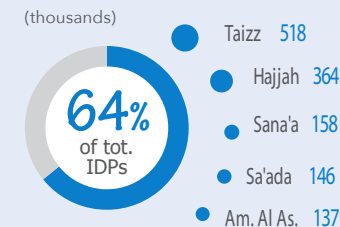
34.5% of the total IDPs have *poor* food consumption scores. **49%** are in need of food.^{(2) (3)}

Humanitarian needs in Yemen continue to deepen as a consequence of the on-going conflict, disrupted and restricted imports, and a collapsing economy. The loss of livelihood and income; scarcity and high prices of fuel, food, and essential staples; and the weakening of safety nets and public works programmes that used to serve 2.5 million people have directly contributed to increased food insecurity and malnutrition. **The population under Emergency and Crisis Phases of the Integrated Food Security Phase Classification (IPC) has increased by over 9 per cent compared to June 2015 results.** This means that more people are under pressure to meet their basic food requirements. While monthly emergency food assistance is being delivered across the country by humanitarians, the displaced populations of concern are among the most vulnerable when it comes to food needs.

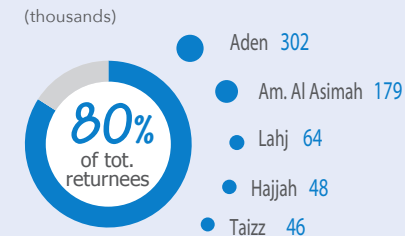


Source: ⁽¹⁾ Task Force on Population Movement (Jun 2016); ⁽²⁾ IPC Report (Jun 2016); ⁽³⁾ Food Consumption Score thresholds are: Acceptable; Borderline; and Poor.

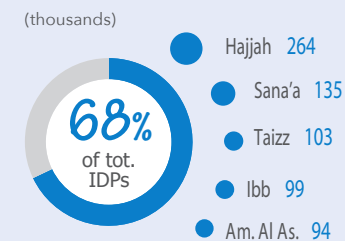
TOP 5 governorates hosting IDPs



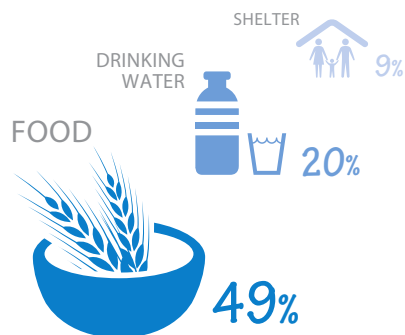
TOP 5 governorates of return



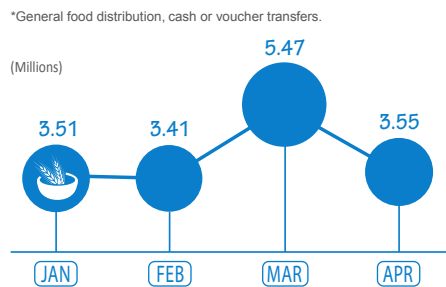
TOP 5 governorates with highest food needs among IDPs



Main needs among IDPs ⁽¹⁾

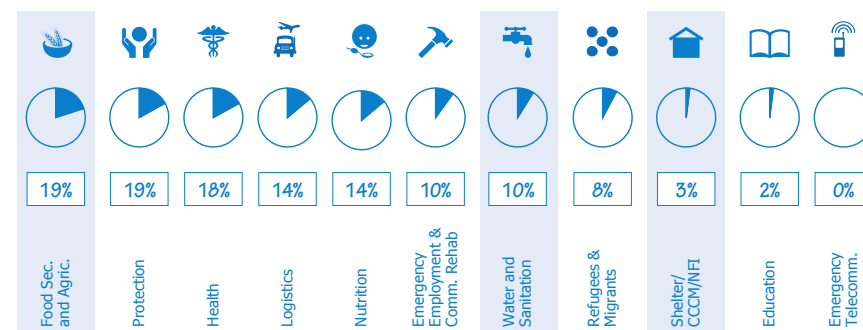


People reached with food Security and Agriculture Monthly Emergency Food Assistance* (January to April 2016)



Source: Food Security and Agriculture Cluster, April 2016.

YHRP 2016 Funding Requirements Coverage per Cluster (as of 13 July 2016)



Source: FTS (13 July 2016).

