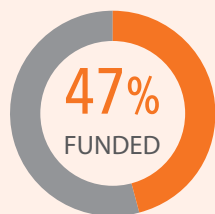


**1.63 BN** REVISED REQTS  
(USD)

**764.7 M** FUNDED  
(USD)

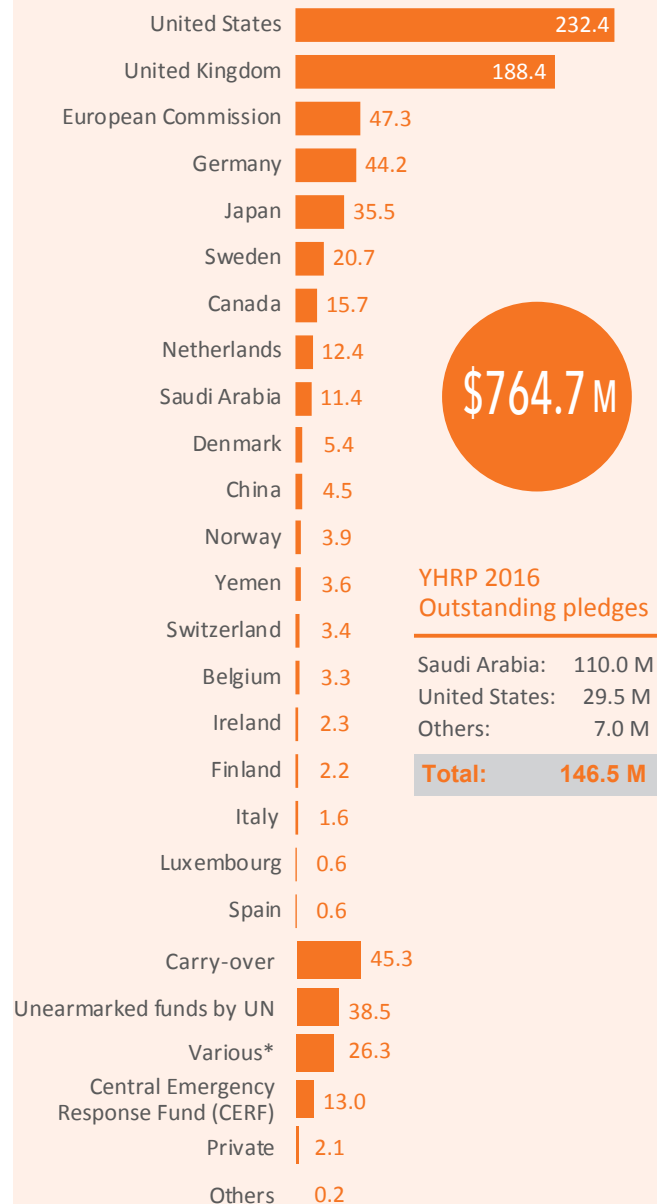
**868.0 M** STILL NEEDED  
(USD)



(\* The 2016 Yemen Humanitarian Response Plan targets and request were revised in August 2016 to what is presented in this snapshot.

(US\$ million)	REVISED REQUIREMENT BY CLUSTER	FUNDED	UNMET	%FUNDED
Coordination	17.6	9.2	8.4	52%
Education	33.4	1.1	32.2	3%
EECR <sup>1</sup>	50.6	4.5	46.1	9%
ETC <sup>2</sup>	1.8	0.0	1.8	0%
Food Security and Agriculture	746.0	283.5	462.5	38%
Health	182.3	63.6	118.7	35%
Logistics	44.0	16.4	27.6	37%
Nutrition	102.9	53.0	49.9	52%
Protection	80.7	30.8	50.0	38%
Refugees and Migrants	73.9	7.7	66.1	10%
Shelter/CCCM/NFIs <sup>3</sup>	158.3	14.1	144.2	9%
WASH <sup>4</sup>	141.1	32.7	108.4	23%

## YHRP CONTRIBUTIONS BY DONOR (US\$ million)

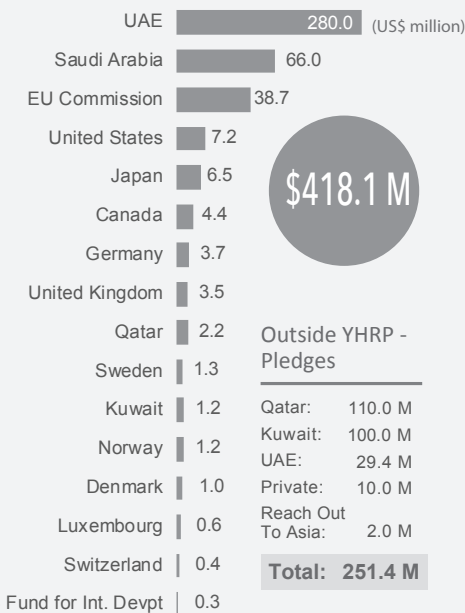


\*Details not yet provided

## \$1.18 BN TOTAL HUMANITARIAN FUNDING 2016



### OUTSIDE YHRP FUNDING BY DONOR (as of 11 October 2016)

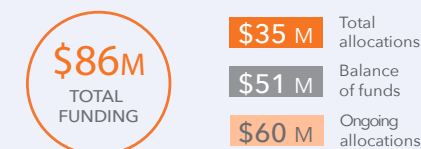


Contributions to the HPF and CERF are already recorded in the YHRP funding.

2016 OVERVIEW ON CONTRIBUTIONS BY CENTRAL EMERGENCY RESPONSE FUND (CERF) FOR YEMEN (as of 11 October 2016)

**\$13 M TOTAL FUNDING (USD)**

### 2016 YEMEN HUMANITARIAN POOLED FUND (YHPF) OVERVIEW (as of 11 October 2016)



<sup>1</sup>EECR: Emergency Employment and Community Rehabilitation; <sup>2</sup>ETC: Emergency Telecommunications; <sup>3</sup>CCCM/NFIs: Camp Coordination and Camp Management/Non-food items; <sup>4</sup>WASH: Water, Sanitation and Hygiene.