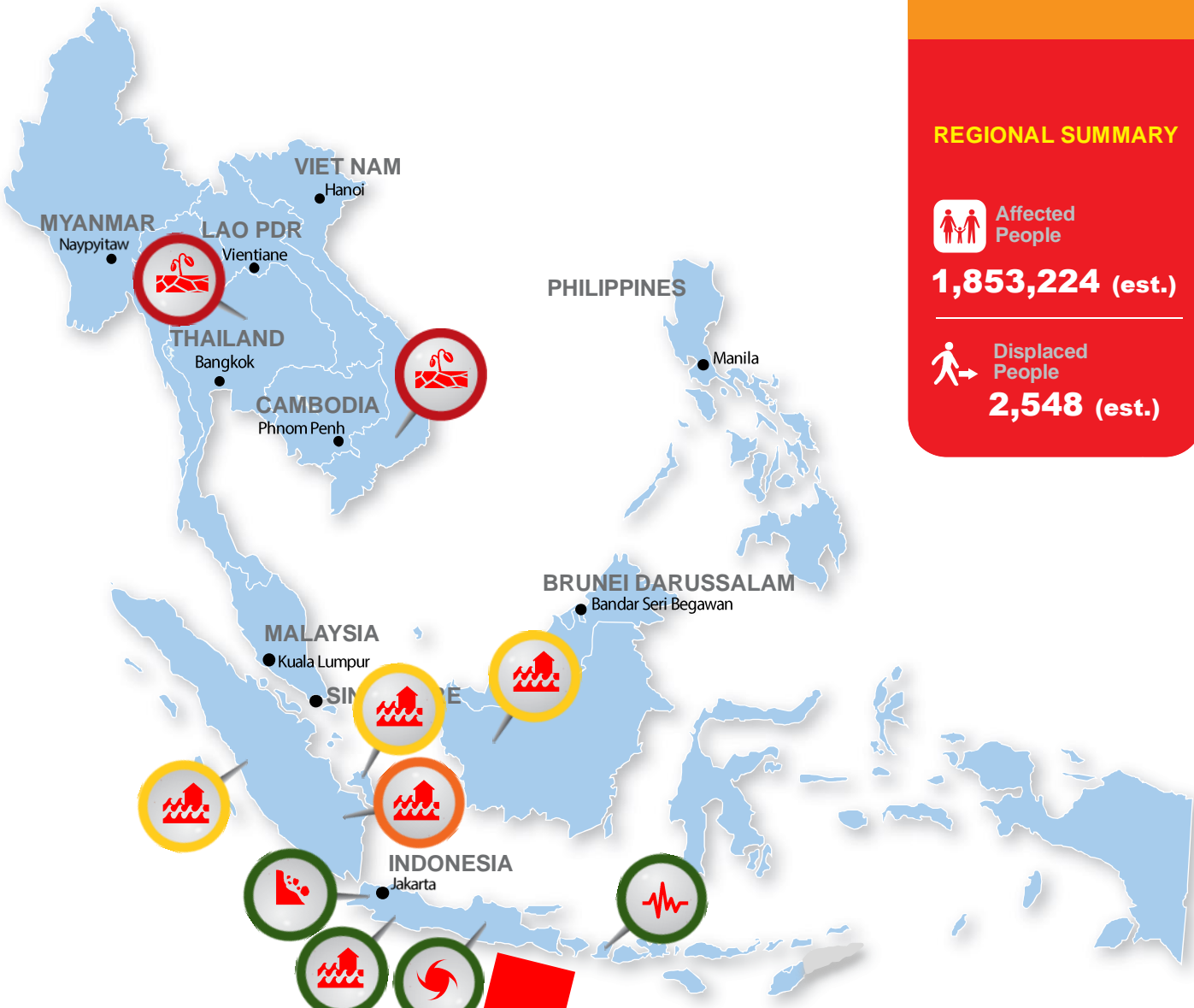




WEEKLY DISASTER UPDATE

28 - 03
MARCH APRIL
2016

AHA CENTRE
ASEAN Coordinating Centre
for Humanitarian Assistance
on disaster management



REGIONAL SUMMARY



Affected People

1,853,224 (est.)



Displaced People

2,548 (est.)

0 - 1K people affected 1K - 10K people affected 10 K - 100 K people affected More than 100K people affected

INDONESIA

Earthquake

A 4.7 M (Richter scale) earthquake occurred in Lombok and damaged 44 houses.

Flood

High intensity rainfall caused flooding in Banyumas in Central Java, Sekadau and Sanggau in West Kalimantan, Pangkalpinang in Bangka Belitung, Bandung in West Java and Musi Rawas Utara in South Sumatra. The flooding has submerged 403 houses of 1,108 families. 27,156 people have been affected and 2,239 of them were evacuated.

Assistance has been provided by local authorities and other responding organisations.

Landslide

Landslides occurred in West Bandung and Sukabumi and caused the damage of 80 houses. 338 people were affected and 147 have been displaced.

Strong Wind

Strong winds have occurred in Subang in West Java, Wonosobo in Central Java, Blitar and Jember in East Java and Yogyakarta. These events caused the death of 2 people and injured 8 people. 172 houses have been damaged and 162 people have been evacuated.

THAILAND

Drought

Drought is affecting 4,000 villages in 27 provinces while 4 provinces are facing hazardous haze.

VIETNAM

Drought

Vietnam has experienced drought in Southern Central Region, Central High Land and Southeast where 365,146 households have been affected.

SOURCE

Basemap is from global administrative area. Information is generated from many sources including NDMO, International Organization and news agencies. Basemap is from global administrative area. Information is generated from many sources including NDMO, International Organization and news agencies

DISCLAIMER

The AHA Centre was established in November 2011 by the Association of South East Asian National (ASEAN) to facilitate cooperation and coordination among the Parties, relevant United Nations and international organisations in disaster management. This update consists of natural disaster events that occurs in each ASEAN Member States to include Brunei Darussalam, Cambodia, Indonesia, Lao PDR, Malaysia, Myanmar, Philippines, Singapore, Thailand and Viet Nam.

These will include: Drought, Flood, Earthquake, Tsunami, Volcano, Wind, Landslide and Storm.

The use of boundaries, geographic names and related data shown are not warranted to be error free or implying official endorsement from ASEAN Member State.

SUPPORTED BY:

