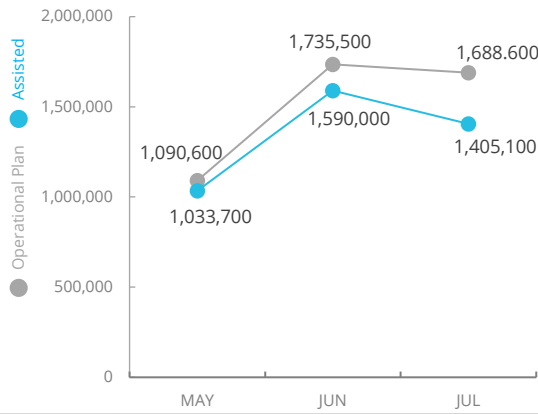


Democratic Republic of Congo

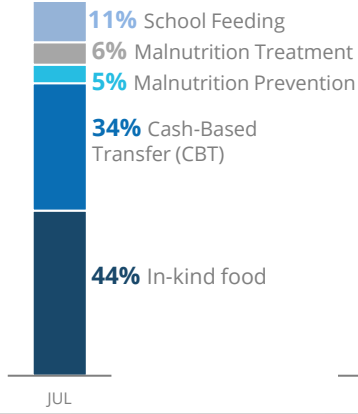
PEOPLE ASSISTED

DR Congo Country Strategic Plan



OPERATIONAL PROFILE

By Activity



By Sex



COVID-19 OPERATIONAL IMPACT

Status WFP Response adjusted

- ✔ Extended distribution timelines
 - ✔ Crowd control and social distancing measures at distribution sites
 - ✔ Mandatory hygiene measures at distribution sites
 - ✔ School feeding through take home rations
- ✔ Ongoing
 ! Partially Suspended
 ✘ Suspended

FUNDING

DR Congo Country Strategic Plan (CSP)
September 2021 – February 2022

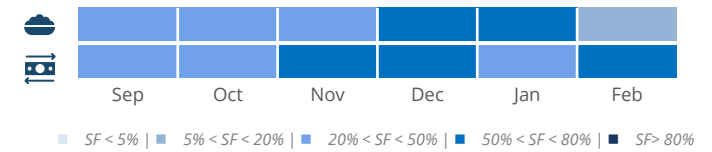
Net funding requirements
US\$91.2m

2021 LEVEL 3 RESPONSE
Requirements US\$662.5m

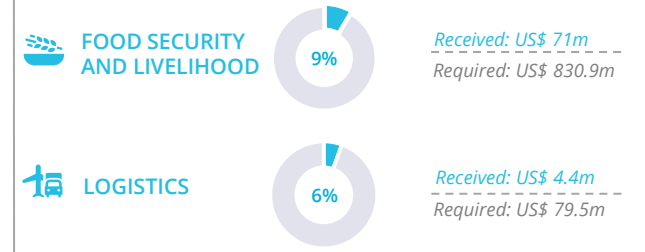
AVERAGE MONTHLY FUNDING REQUIREMENTS (US\$)

Food: 29.1m **Cash: 16.5m**

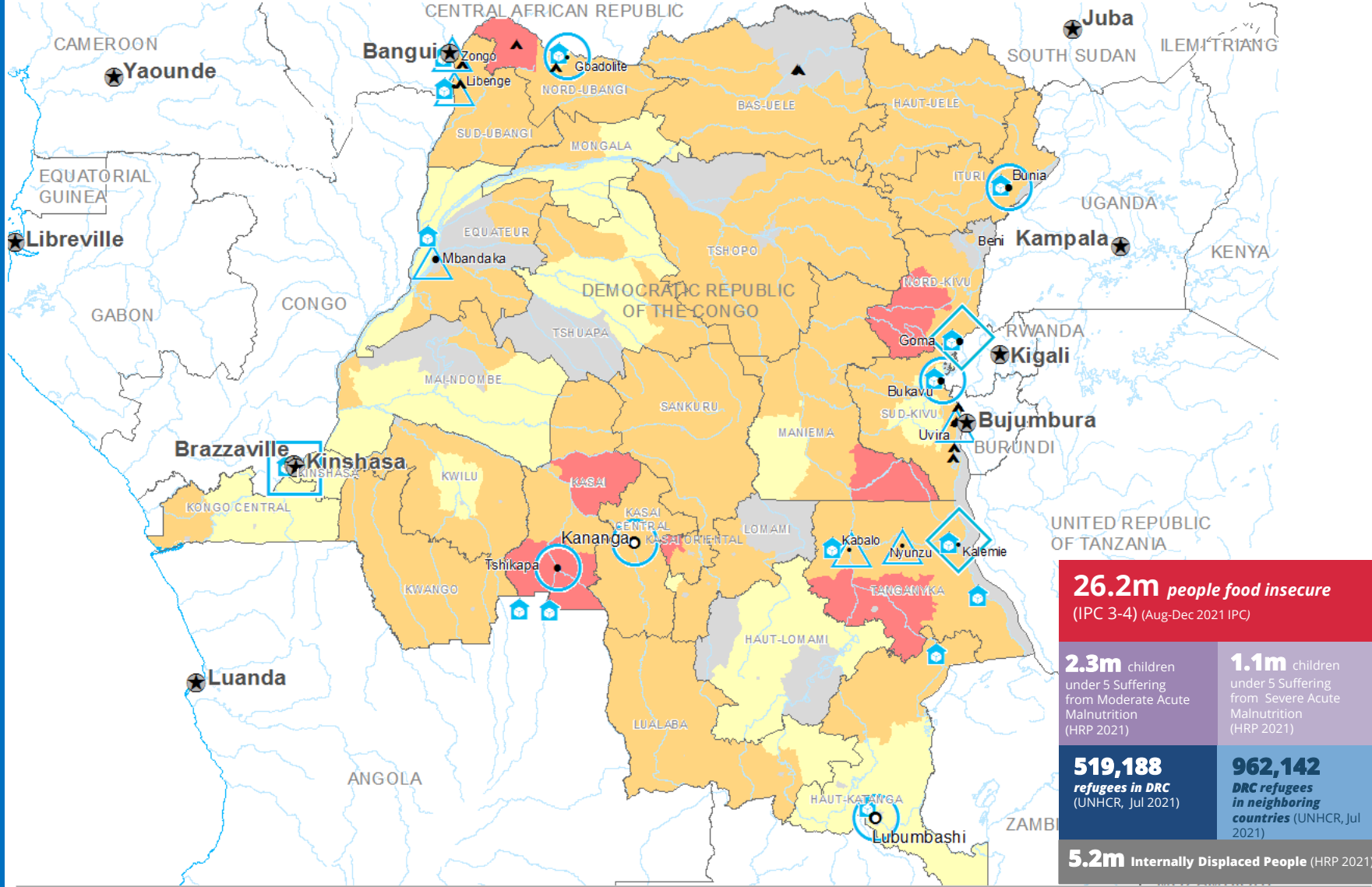
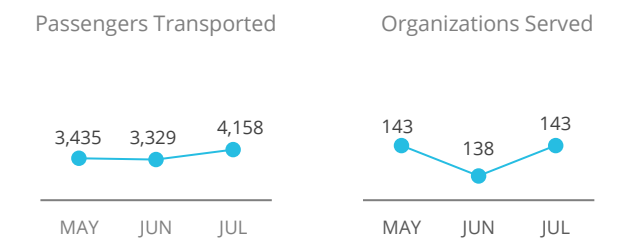
EXPECTED SHORTFALLS



WFP-LED AND SUPPORTED CLUSTERS



UN HUMANITARIAN AIR SERVICES (UNHAS)



IPC Integrated Phase Classification
Projection August - December 2021

No data	Crisis (Phase3)	Country Office	Field Office	National Capital	International Boundary
Minimal (Phase1)	Emergency (Phase 4)	Area Office	Warehouse	Major Town	Province Boundary
Stressed (Phase2)	Famine (Phase5)	Refugee Camp		Intermediate Town	River
				Small Town	

Sources: WFP, UNGIWG, GAUL, GLCSC, OCHA, UNHCR, IPC.
The designations employed and the presentation of material in the map(s) do not imply the expression of any opinion on the part of WFP concerning the legal or constitutional status of any country, territory, city or sea, or concerning the delimitation of its frontiers or boundaries.
© World Food Programme 2021.

WFP LEVEL 3 EMERGENCY

SITUATION REPORT and COUNTRY BRIEF

Gender and Age Marker **3**