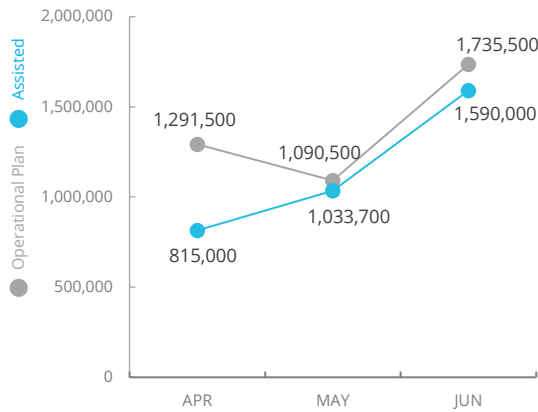


Democratic Republic of Congo

Emergency Dashboard | July 2021

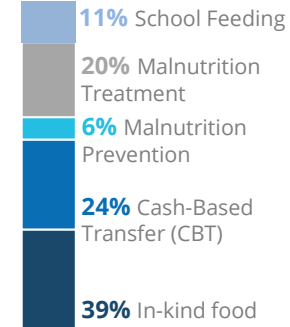
PEOPLE ASSISTED

DR Congo Country Strategic Plan

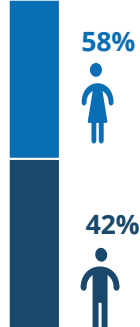


OPERATIONAL PROFILE

By Activity



By Sex



COVID-19 OPERATIONAL IMPACT

Status WFP Response adjusted

- ✔ Extended distribution timelines
 - ✔ Crowd control and social distancing measures at distribution sites
 - ✔ Mandatory hygiene measures at distribution sites
 - ✔ School feeding through take home rations
- ✔ Ongoing
 ! Partially Suspended
 ✘ Suspended

FUNDING

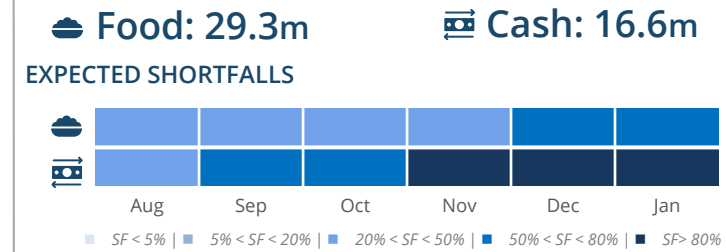
DR Congo Country Strategic Plan (CSP)
August 2021 – January 2022

Net funding requirements
US\$160m

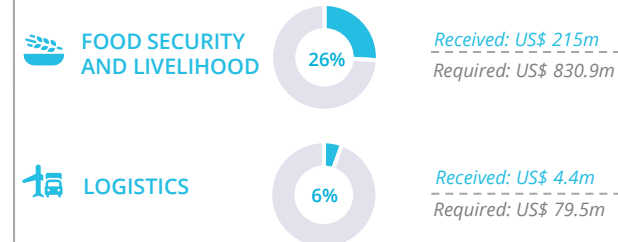
2021 LEVEL 3 RESPONSE
Requirements US\$662.5m

SOURCE: WFP, AUG 2021

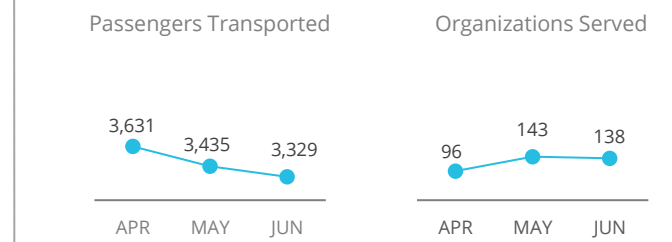
AVERAGE MONTHLY FUNDING REQUIREMENTS (US\$)



WFP-LED AND SUPPORTED CLUSTERS

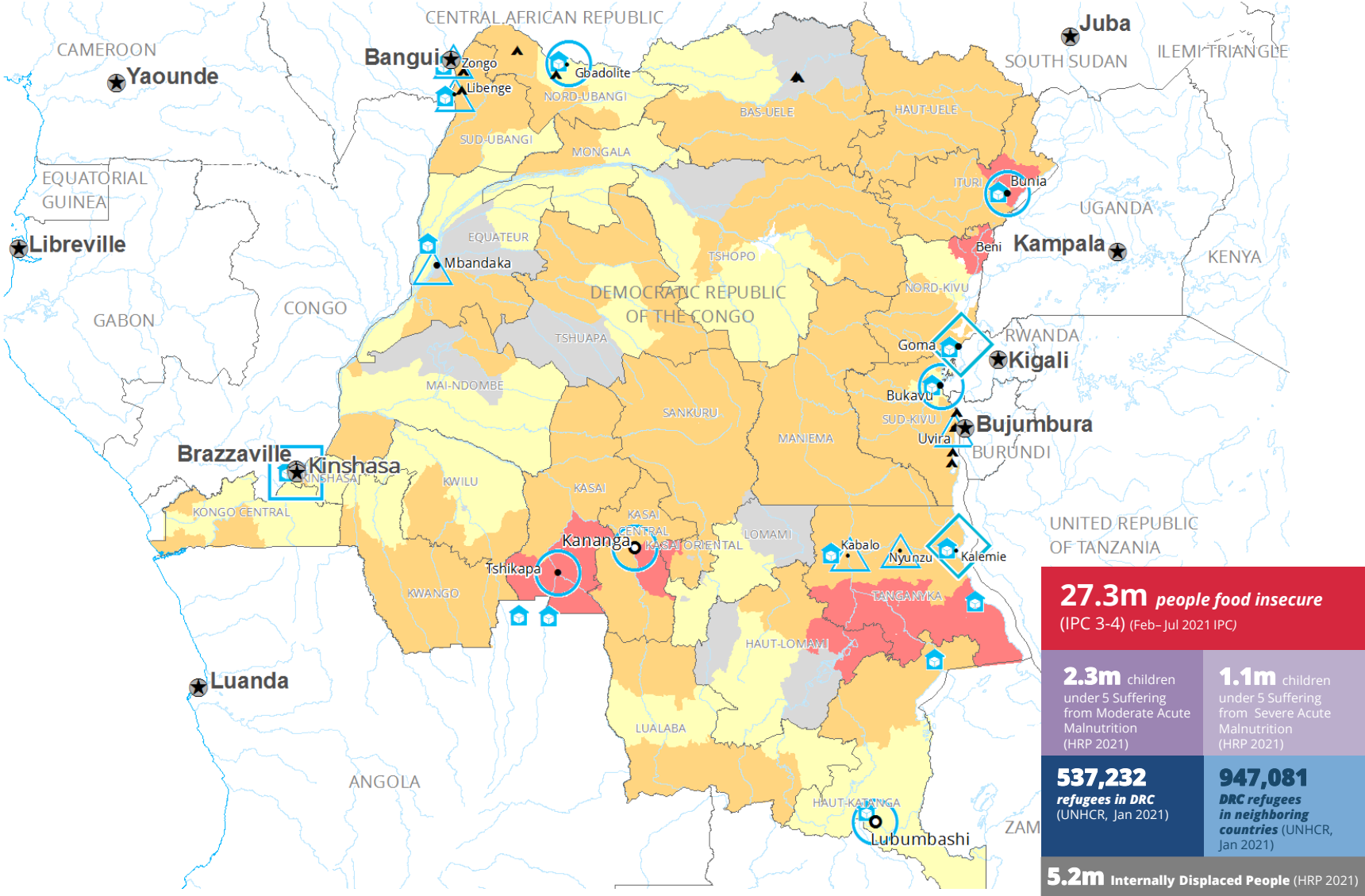


UN HUMANITARIAN AIR SERVICES (UNHAS)



WFP LEVEL 3 EMERGENCY

SITUATION REPORT and COUNTRY BRIEF Gender and Age Marker 3



Sources: WFP, UNGIWI, GAUL, GLCSC, OCHA, UNHCR, IPC.

The designations employed and the presentation of material in the map(s) do not imply the expression of any opinion on the part of WFP concerning the legal or constitutional status of any country, territory, city or sea, or concerning the delimitation of its frontiers or boundaries. © World Food Programme 2021.

Produced by the WFP Operations Centre (OPSCEN) jointly with Country Office and Regional Bureau for Southern Africa. This dashboard is based on best available information at the time of production. Future updates may vary as new information becomes available.