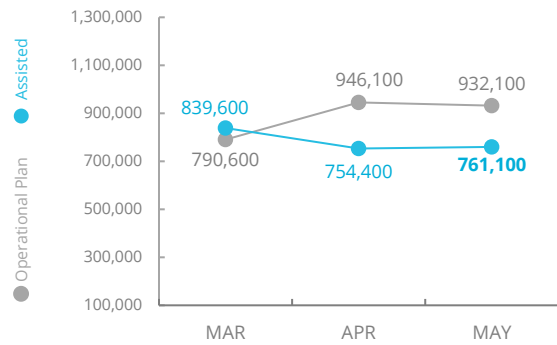


Central African Republic



PEOPLE ASSISTED BY WFP Food Assistance



SOURCE: WFP, 11 JUN 2021



OPERATIONAL PROFILE People reached (May)

General Food Assistance (in-kind and cash)



School Meals*



Nutrition (Prevention and Treatment)



Livelihoods



*This includes Emergency School Feeding.



COVID-19 OPERATIONAL IMPACT

Assisted	Status	WFP Response
522,500	Ongoing	GFD and Nutrition activities were affected by security constraints, lack of escorts in some areas and commodity shortfalls.
85,600	Ongoing	WFP provided on-site school meals under only the home-grown school feeding programme and Emergency School Feeding activities
62,900	Ongoing	
90,000	Ongoing	

✓ Ongoing | ⚠ Partially Suspended | ✖ Suspended



Funding

Central African Republic Country Strategic Plan (CSP)

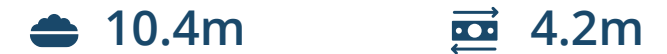
July - December 2021

US\$ 54.6m
Net funding requirements

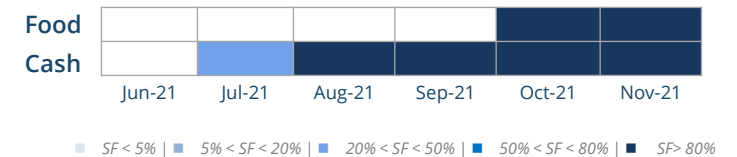
2021 Requirements USD 106.8m



AVERAGE MONTHLY FUNDING REQUIREMENTS (US\$)

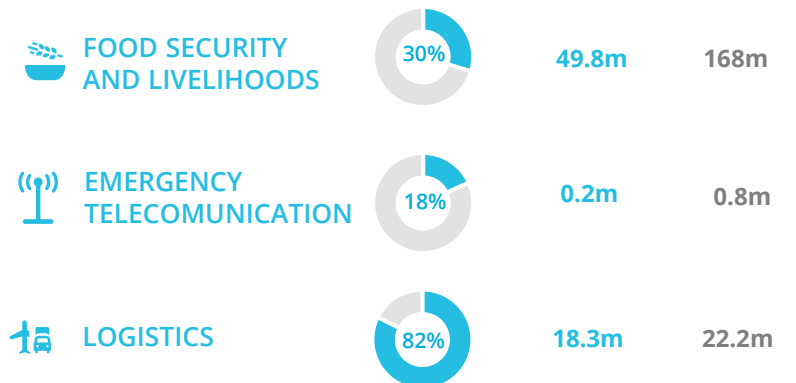


EXPECTED SHORTFALLS

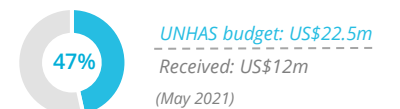


WFP-LED AND SUPPORTED CLUSTERS

Received (US\$): Required (US\$):



UN HUMANITARIAN AIR SERVICE (UNHAS)

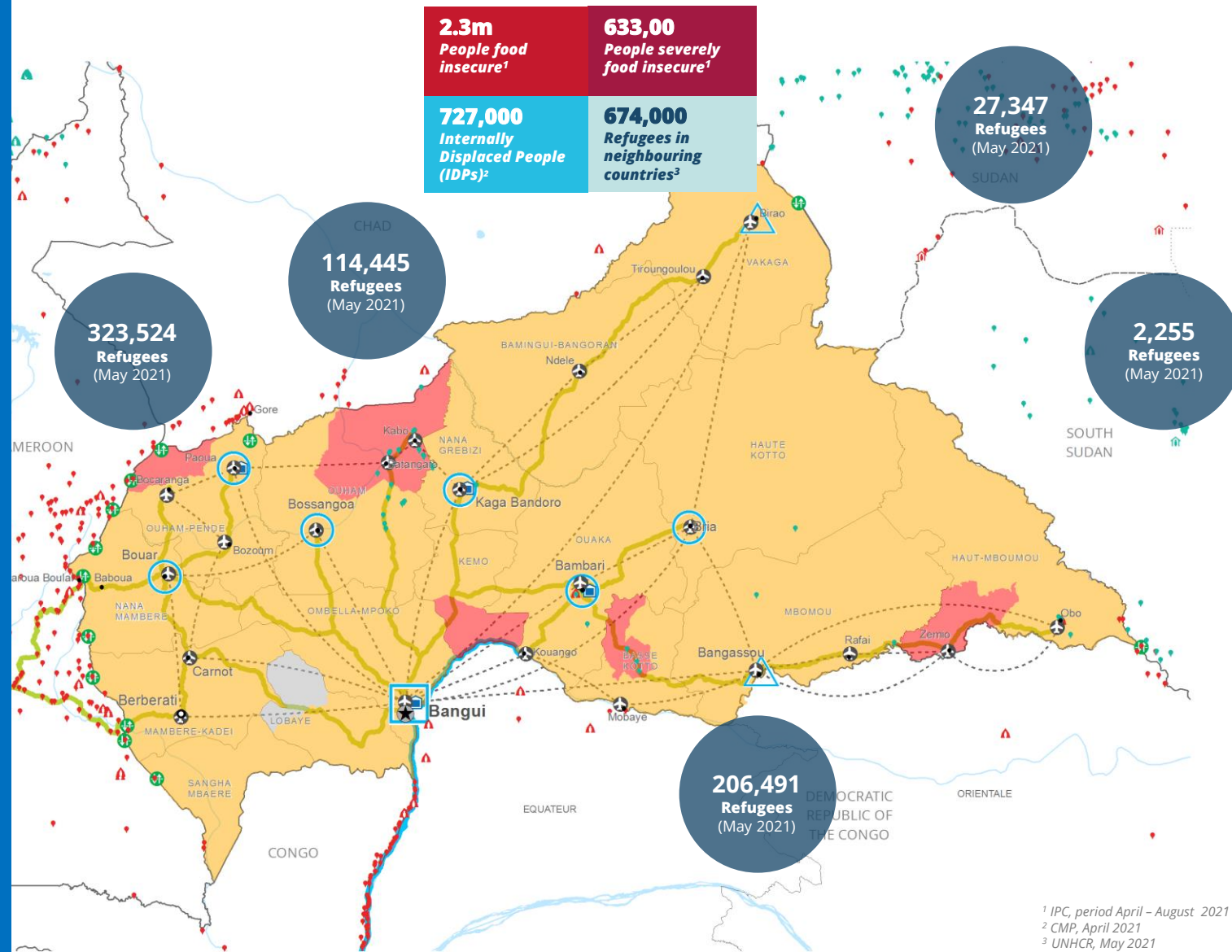


Passengers Transported (UNHAS)

2,171 passengers
In May 2021

WFP LEVEL 2 EMERGENCY SINCE 30 MARCH 2018

SITUATION REPORT and COUNTRY BRIEFS



¹ IPC, period April - August 2021
² CMP, April 2021
³ UNHCR, May 2021

