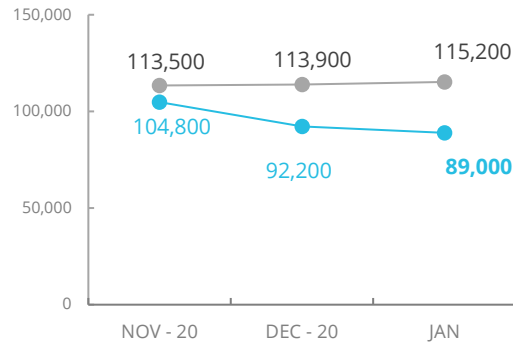


Libya



PEOPLE ASSISTED

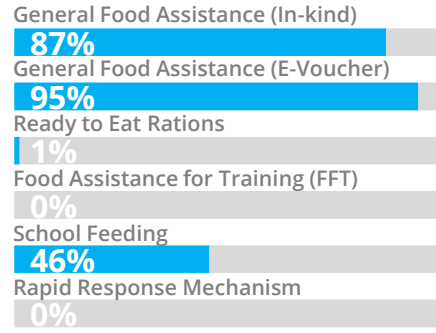
Interim Country Strategic Plan (ICSP)



SOURCE: WFP, 29 JAN 2021 ● Operational Plan ● Assisted



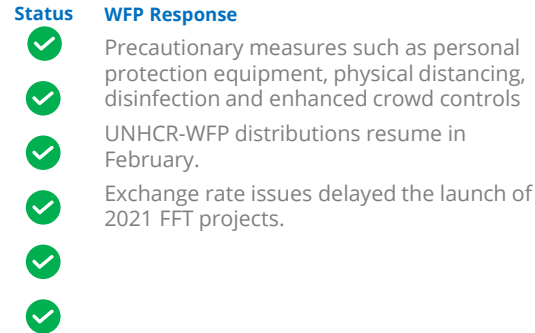
OPERATIONAL PROFILE (By Activity*)



*Beneficiaries figures are estimates and subject to change



COVID-19 OPERATIONAL IMPACT



● Ongoing ● Partially Suspended ● Suspended



FUNDING

Interim Country Strategic Plan (ICSP)

February - July 2021

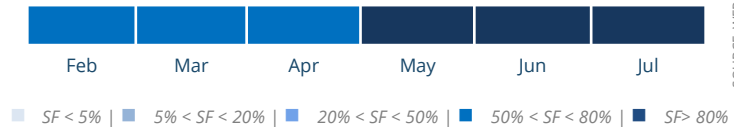
us\$10.9m

Net funding requirements

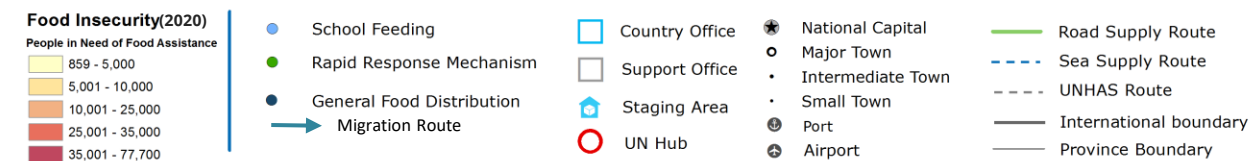
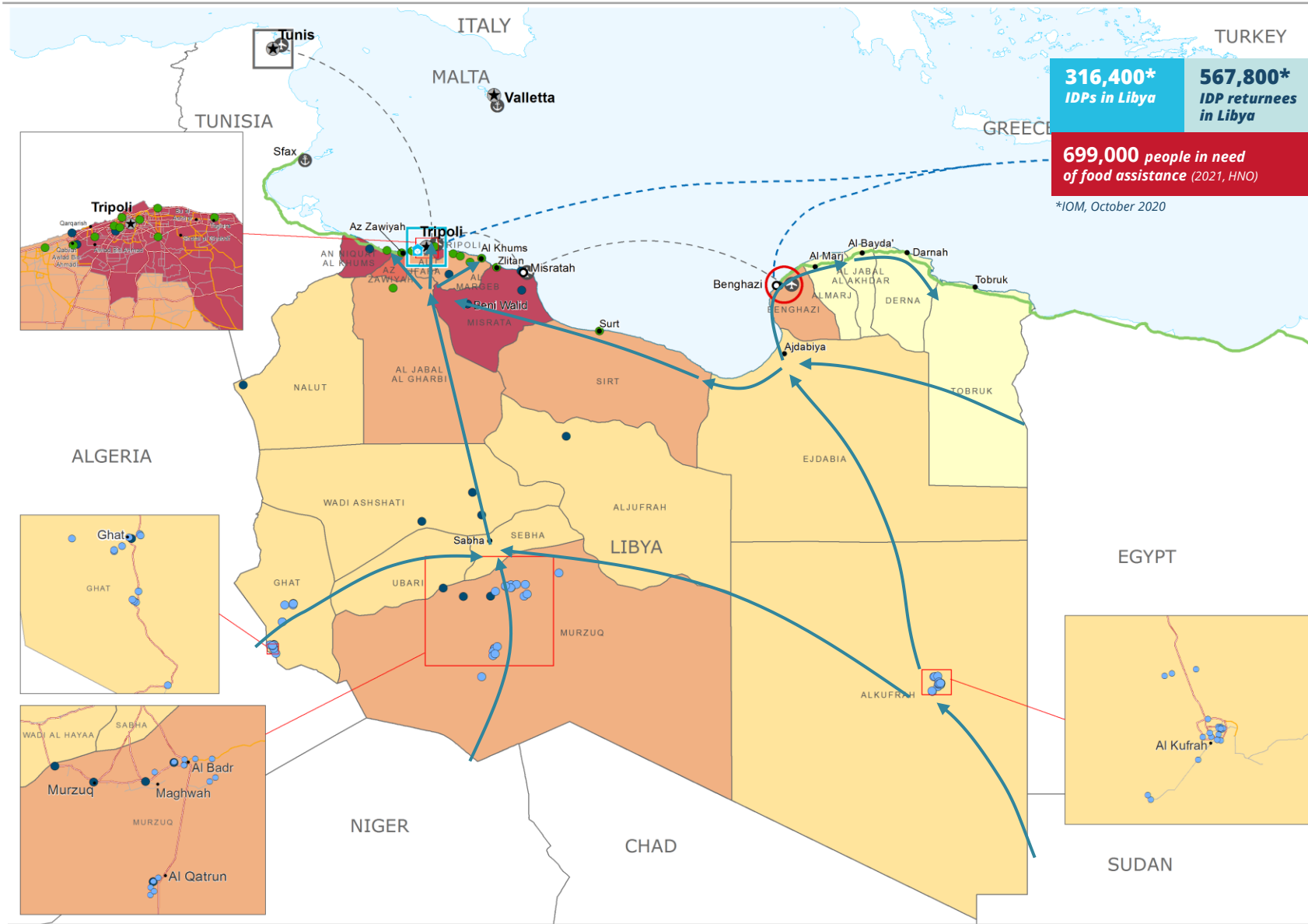
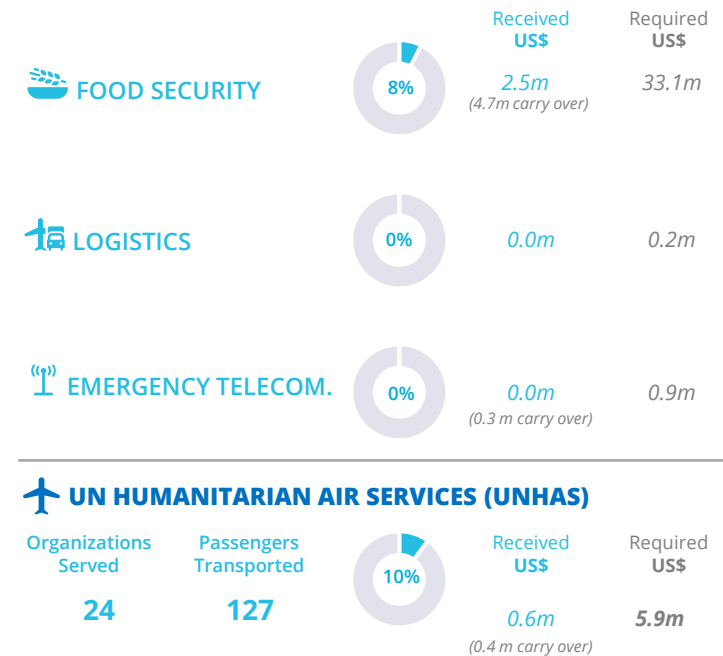
AVERAGE MONTHLY FUNDING REQUIREMENTS (6 Months -US\$)

2.4m

EXPECTED SHORTFALLS



WFP-LED AND SUPPORTED SECTORS



Data Sources: WFP, UNGIWI, GAUL, GLCSC, OCHA, MSNA/HNO
 The designations employed and the presentation of material in the map(s) not imply the expression of any opinion on the part of WFP concerning the legal or constitutional status of any country, territory, city or sea, or concerning the delimitation of its frontiers or boundaries.
 ©World Food Programme 2020

WFP LEVEL 2 EMERGENCY since 26 NOVEMBER 2014

Situation Report and Country Brief

Gender and Age Marker