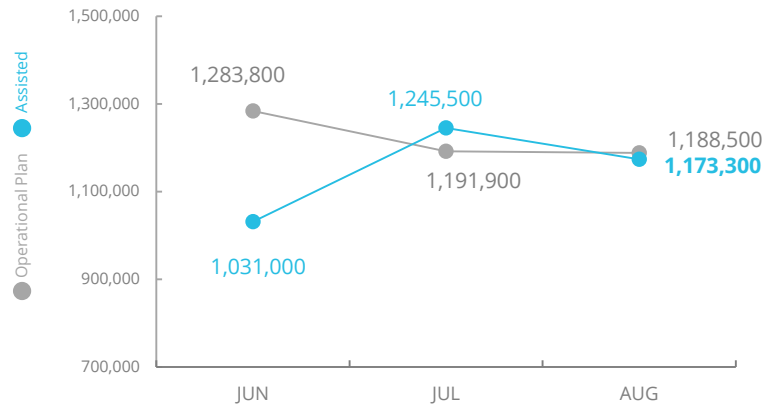


Burkina Faso

PEOPLE ASSISTED Country Strategic Plan (CSP)



SOURCE: WFP, 31 AUG 2020

FUNDING Burkina Faso Country Strategic Plan (CSP) of which for the Emergency Response:

October 2020 – March 2021
Net funding requirements

US\$ 91.0m

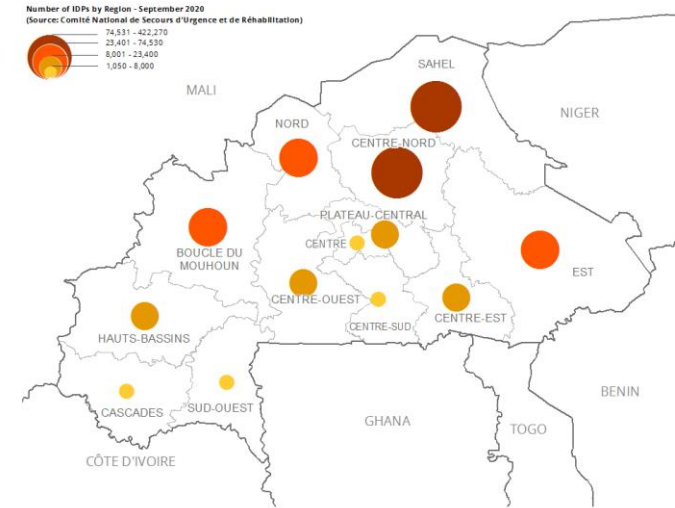
2020 COUNTRY STRATEGIC PLAN (CSP)



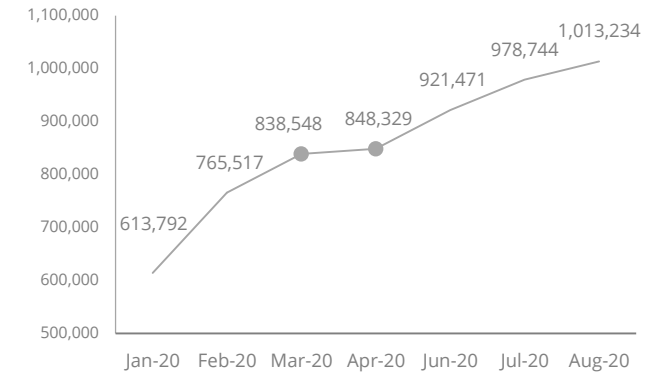
Contributions: USD 126.5m
Requirements: USD 201.8m

SOURCE: WFP, 24 SEP 2020

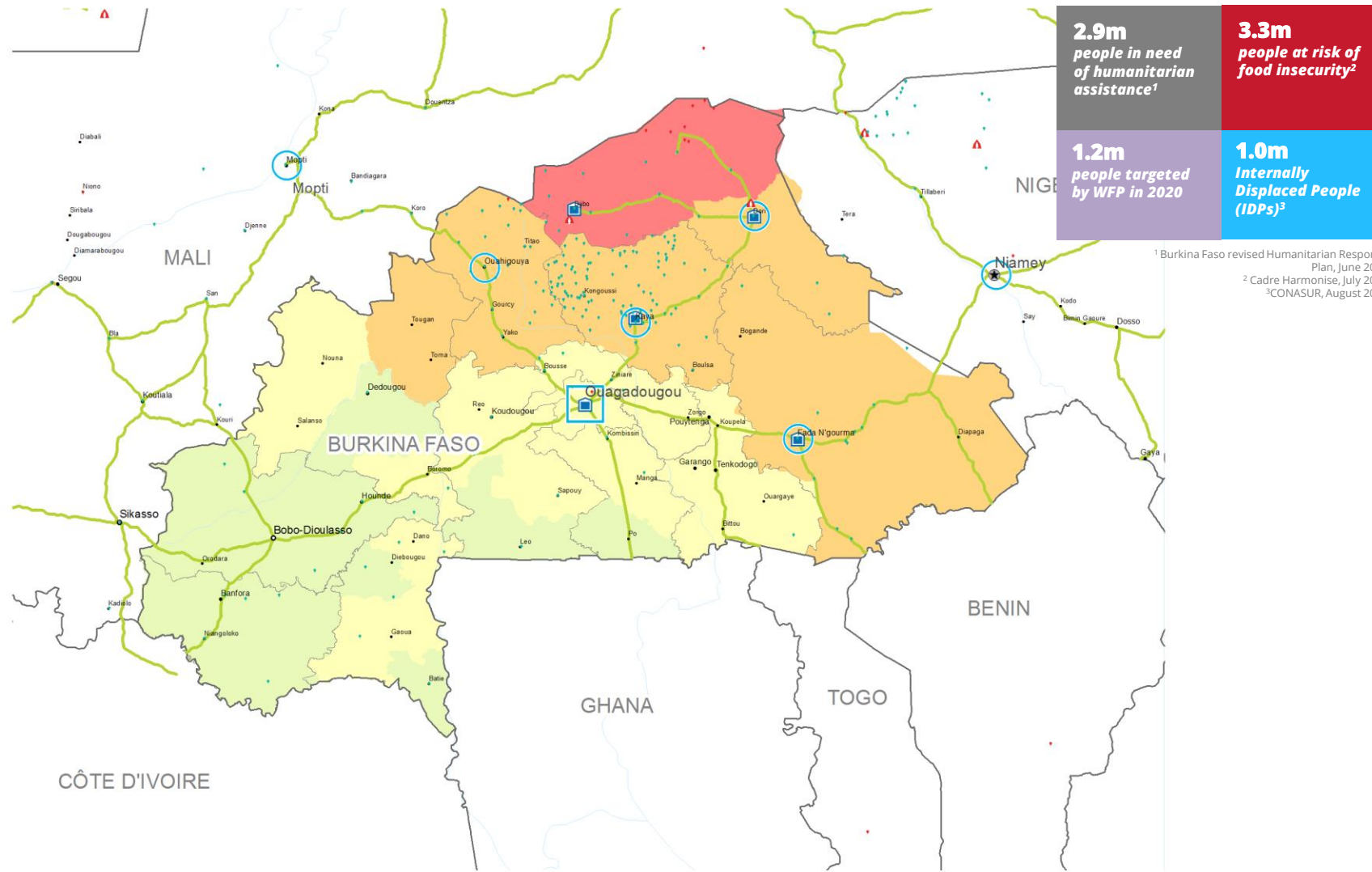
INTERNAL DISPLACEMENT CONCENTRATION AS OF SEPTEMBER 2020



INTERNAL DISPLACEMENT FIGURES



SOURCE: Government, SEP 2020



SOURCE: FTS, SEP 2020

WFP-LED AND SUPPORTED CLUSTERS



This data includes the Food Security COVID-19 response requirements: USD 52.8 m (27% funded) and the Nutrition COVID-19 response requirements: USD 2 m (0% funded)

WFP LEVEL 3 EMERGENCY

Level 2 Emergency since **10 May 2019**
part of the Central Sahel Level 3 Emergency since **09 September 2019**



SITUATION REPORT and COUNTRY BRIEF

Produced by the WFP Operations Centre (OPSCEN) jointly with Country Office and Regional Bureau Dakar. This dashboard is based on best available information at the time of production. Future updates may vary as new information becomes available.

CH Food Security Classification June - August 2020 projection

- No data
- Minimal (Phase1)
- Stressed (Phase2)
- Crisis (Phase3)
- Emergency (Phase 4)
- Famine (Phase5)

- Country Office
- Sub Office
- Field Office
- IDP Camp
- IDP Center
- IDP Location
- Refugee Camp
- Refugee Center
- Refugee Location
- Warehouse
- Road Supply Route
- National Capital
- Major Town
- Intermediate Town
- Small town
- International Boundary
- Region Boundary
- River

Sources: WFP, OCHA, UNHCR, CONASUR.

The designations employed and the presentation of material in the map(s) do not imply the expression of any opinion on the part of WFP concerning the legal or constitutional status of any country, territory, city or sea, or concerning the delimitation of its frontiers or boundaries.
© World Food Programme 2020.