

WFP Ethiopia, Tigray Region

Drought Emergency Targeted Supplementary Feeding Programme



November 2016

NOVEMBER
OVERALL STATUS
AS OF 30 NOV 2016

DISPATCHES AND DELIVERIES



KEY FIGURES



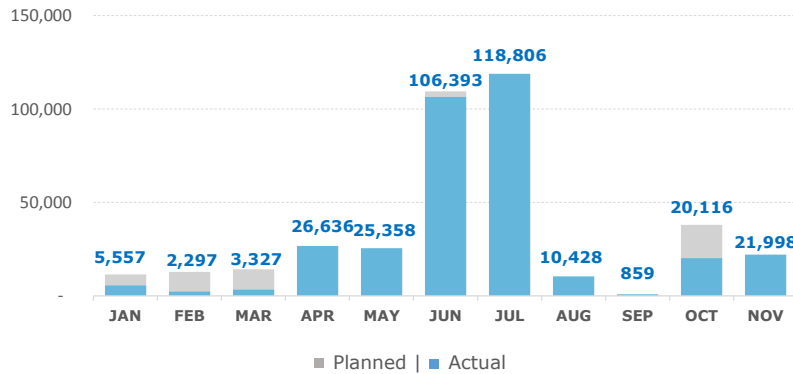
TSFP HIGHLIGHTS

- Treatment of a Moderately Acute Malnutrition cases continued as usual in November, with Targeted Supplementary Feeding Programme activities reported in all the targeted woredas.
- The number of actual beneficiaries reached in November has remained relatively stable compared to October 2016.
- The performance indicators, show cure rate of 76% for children under five, and 96% cure rate for pregnant and lactating women (PLWs). Even though less concerning, other indicators like death and default rates reported relatively higher rates among children under five compared to pregnant and lactating women.



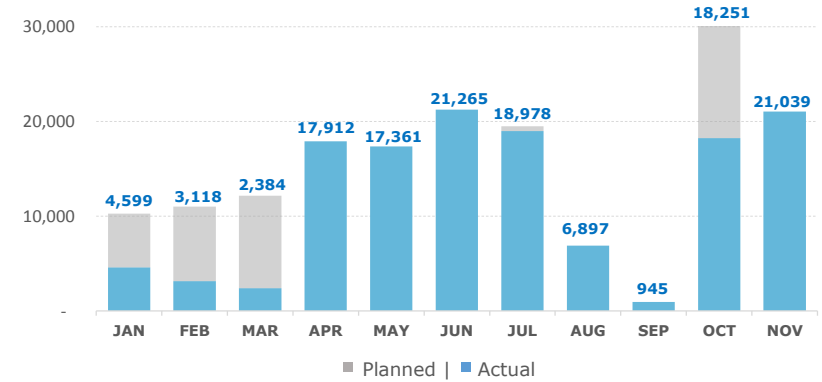
TSFP MAM CHILDREN 6-59 MONTHS, BY MONTH

Planned vs. Actual



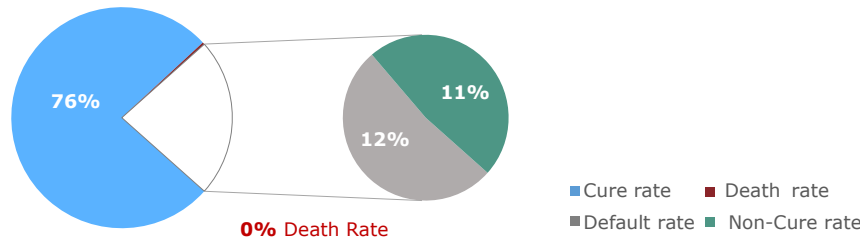
TSFP PREGNANT AND LACTATING WOMEN, BY MONTH

Planned vs. Actual



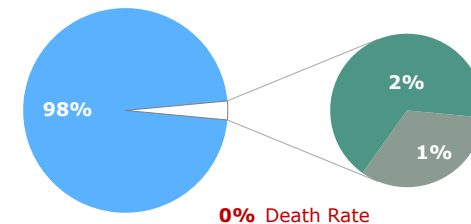
TSFP - MAM CHILDREN 6-59 MONTHS

November TSFP performance indicators¹



TSFP - PREGNANT AND LACTATING WOMEN

November TSFP performance indicators^{1,2}



Sphere standards: Cured >75% | Death <3% | Default <15%

¹ TSFP performance indicators reflect IMAM model of implementation ² PLW cure rate reflects combined admission and discharge criteria per 2012 CMAM Guidelines