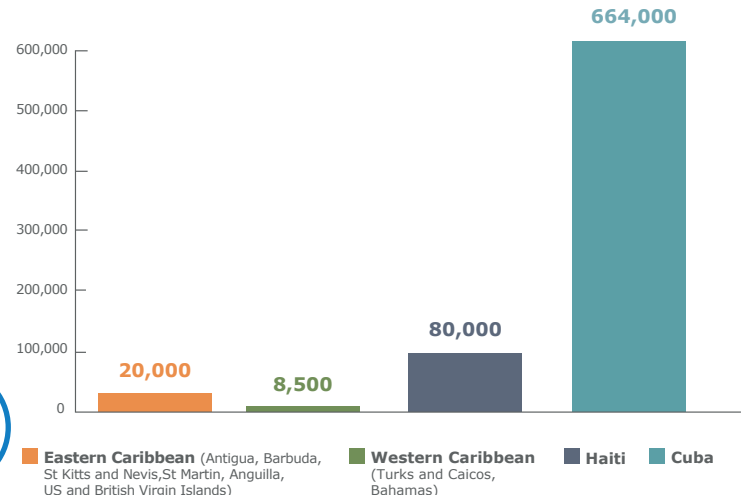


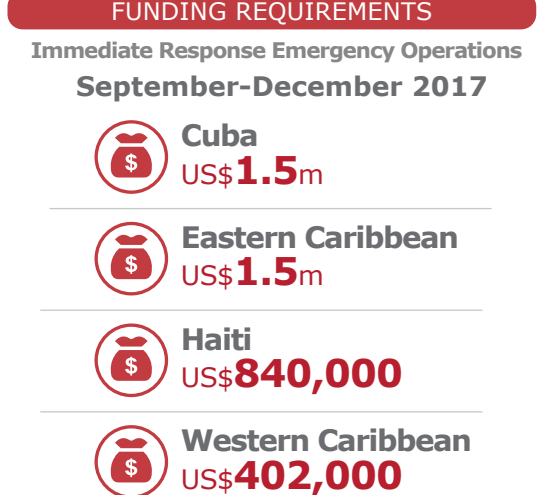
PEOPLE TARGETED



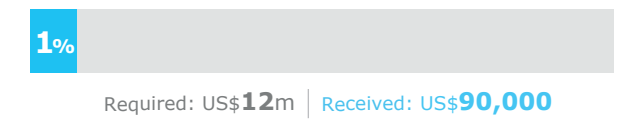
OPERATIONAL PROFILE



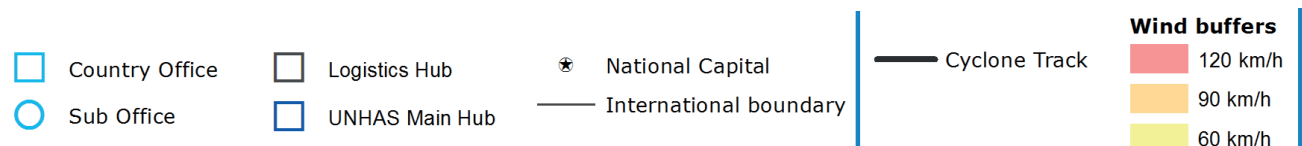
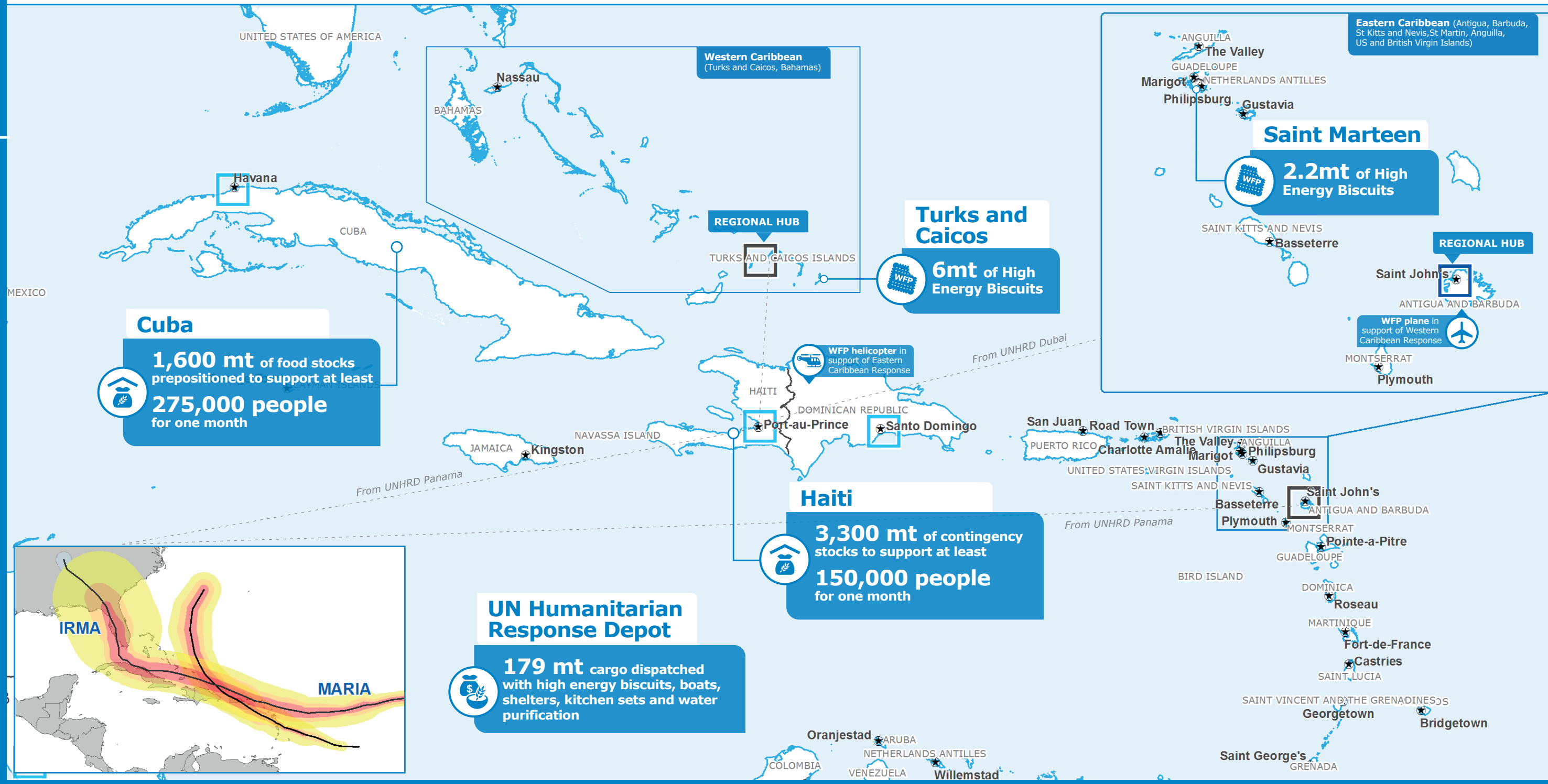
FUNDING



Special Operation in Eastern Caribbean 201105
Supply Chain and Telecom



Overall WFP needs for the region
US\$20m



Sources: WFP, UNGIWG, GAUL, GLCSC, UNHCR, IOM. The designations employed and the presentation of material in the map(s) do not imply the expression of any opinion on the part of WFP concerning the legal or constitutional status of any country, territory, city or sea, or concerning the delimitation of its frontiers or boundaries. © World Food Programme 2017

This dashboard is based on best available information at the time of production. Future updates may vary as new information becomes available.