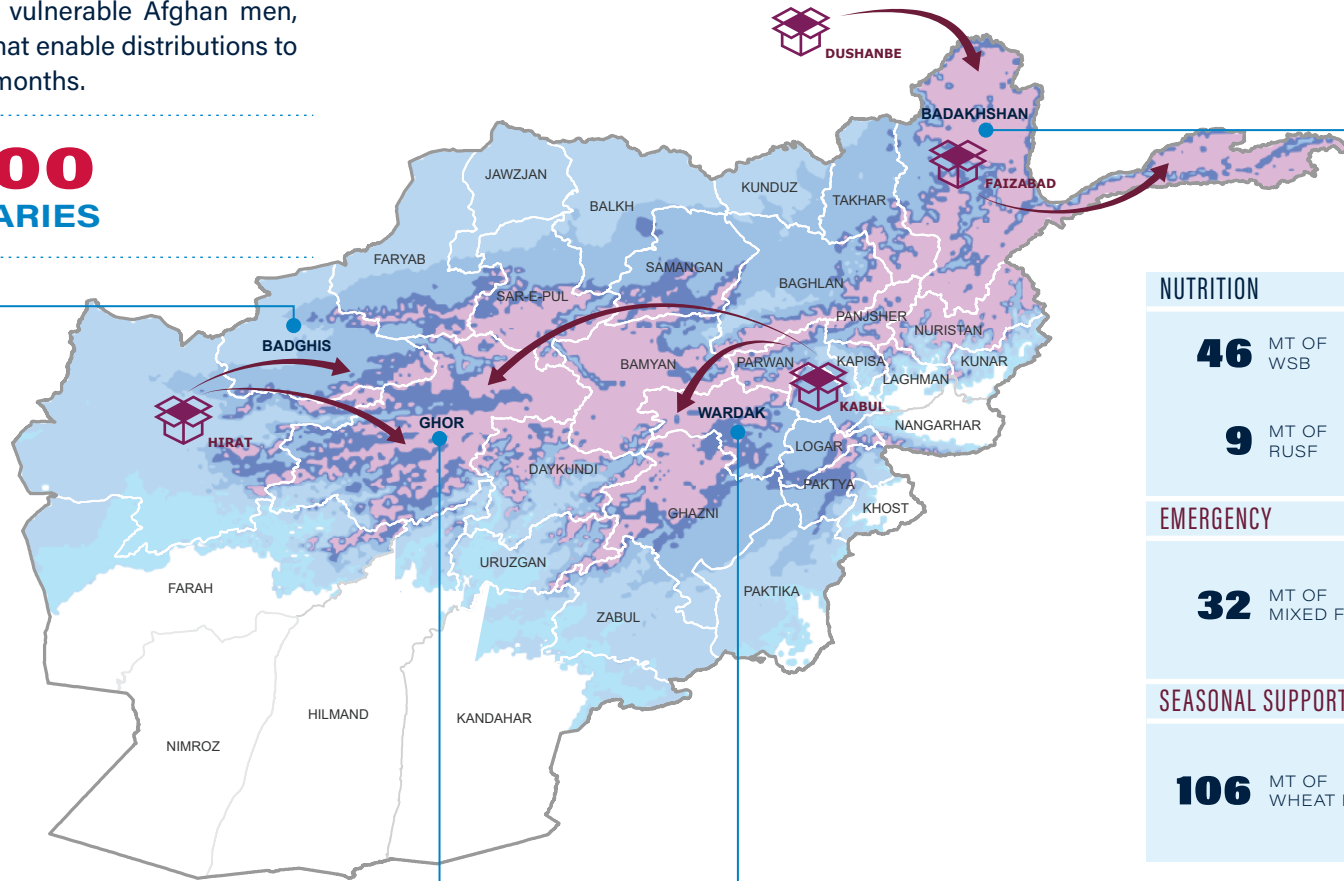


WFP WINTER STOCK PREPOSITIONING

As a mountainous country with poor road infrastructure, large swathes of Afghanistan are inaccessible in winter due to adverse weather conditions and snow cover. In 2017 WFP Afghanistan plans to preposition 1,600 mt of food for 74,600 vulnerable Afghan men, women and children to strategic locations that enable distributions to continue uninterrupted through the winter months.



74,600
BENEFICIARIES



NUTRITION

120 MT OF WSB	[5,350]
45 MT OF RUSF	[2,650]
	[2,750]

EMERGENCY

81 MT OF MIXED FOODS	[1,200]
	[1,250]

SEASONAL SUPPORT

450 MT OF MIXED FOODS	[8,600]
	[8,950]

NUTRITION

46 MT OF WSB	[1,000]
9 MT OF RUSF	[500]
	[550]

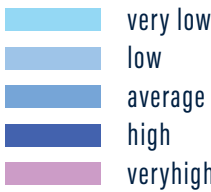
EMERGENCY

32 MT OF MIXED FOODS	[500]
	[550]

SEASONAL SUPPORT

106 MT OF WHEAT FLOUR	[3,650]
	[3,800]

SNOW COVERAGE LIKELIHOOD (AVERAGE)



SEASONAL SUPPORT

360 MT OF MIXED FOODS	[6,850]
	[7,150]

NUTRITION

170 MT OF WSB	[5,050]
73 MT OF RUSF	[4,100]
	[4,250]

NUTRITION

83 MT OF WSB	[2,750]
25 MT OF RUSF	[1,550]
	[1,600]

WFP DONORS

