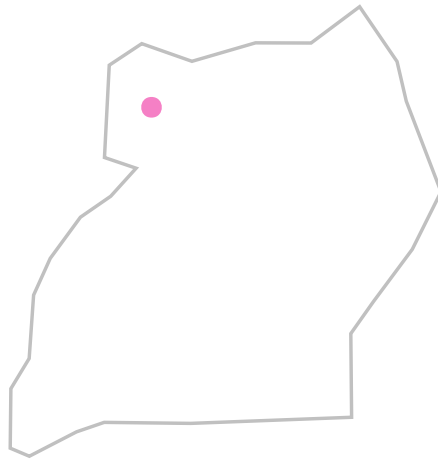
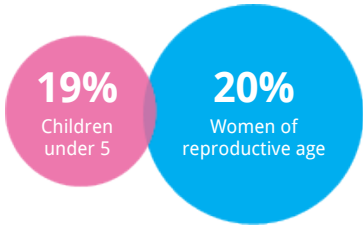


Site report 2017 Rhino Camp UGANDA



Population

116,250 refugees



Origin of refugees

SOUTH SUDAN **DRC**

Site opened
Jan 1980

Partners



Key Indicators

CRUDE MORTALITY RATE

0.0 Deaths/1,000 refugees/month

U5 MORTALITY RATE

0.1 Deaths/1,000 refugees/month

MATERNAL MORTALITY

0 Deaths

SKILLED BIRTH ATTENDANCE

98% of all births

GAM

NC Global Acute Malnutrition

SAM

NC Severe Acute Malnutrition

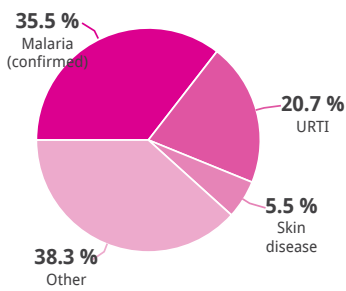
WATER SUPPLY

17 Liters/ person/ day

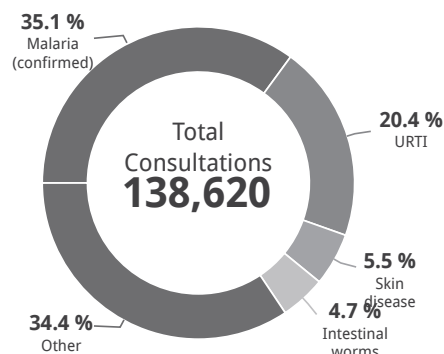
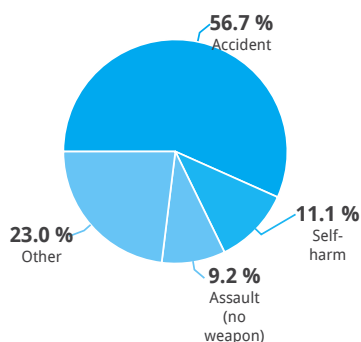
LATRINE COVERAGE

18 Refugees/communal toilets or latrines

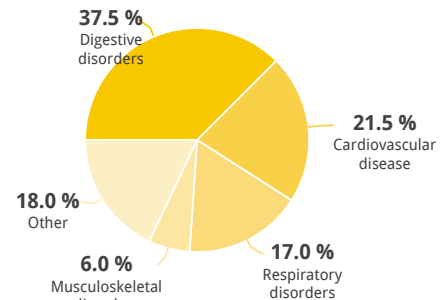
COMMUNICABLE DISEASES



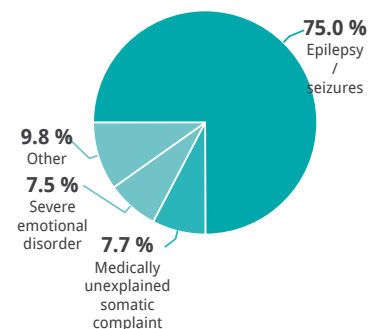
INJURIES



NON-COMMUNICABLE DISEASES



MENTAL HEALTH



Public Health

| HEALTH STAFFING | | | MORBIDITY | | |
|---|-----------|--------------|-----------------------------|-------------------------------|----------|
| | INDICATOR | STANDARD | | INDICATOR | STANDARD |
| Number of medical doctors | 5 | 1 : < 50,000 | ✓ | 72 | |
| Number of qualified nurses | 69 | 1 : < 10,000 | ✓ | 11 | |
| Number of community health workers | 194 | 1 : < 1,000 | ✓ | 6 | |
| ACCESS AND UTILIZATION | | | VACCINATION | | |
| | INDICATOR | STANDARD | | INDICATOR | STANDARD |
| Consultations per trained clinician per day | 55 | < 50 | ⚠ | 45% | < 95% |
| Health utilisation rate (new visits / refugee / year) | 1.1 | 1 - 4 | ✓ | Not collected | |
| Proportion of host population consultations | 38% | | ✓ | HIS | |
| MORTALITY | | | IN-PATIENT DEPARTMENT (IPD) | | |
| | INDICATOR | STANDARD | | INDICATOR | STANDARD |
| Crude Mortality Rate (CMR) (/1000/month) | 0.0 | < 0.75 | ✓ | Average length of stay (days) | 3.4 |
| Under-five Mortality Rate (U5MR) (/1000/month) | 0.1 | < 1.5 | ✓ | Case fatality rate | 0.0 |
| Infant Mortality Rate (IMR) (/1000 livebirths) | 8.0 | < 30 | ✓ | Hospitalisation rate | 17.1 |
| Neonatal Mortality Rate (NNMR) (/1000 livebirths) | 3 | < 20 | ✓ | | 50 - 150 |
| OUTBREAK ALERT AND RESPONSE | | | | | |
| | INDICATOR | STANDARD | | INDICATOR | STANDARD |
| Proportion of outbreaks investigated within 48 hours | | 100% | | | |
| Number of outbreaks reported | 0 | | | | |

Reproductive Health

| ANTENATAL CARE | | | FAMILY PLANNING | | |
|--|-----------|----------|---|--|----------|
| | INDICATOR | STANDARD | | INDICATOR | STANDARD |
| Antenatal care coverage | 93% | > 90% | ✓ | 17% | ≥ 30% |
| Coverage of antenatal tetanus vaccination | 97% | > 95% | ✓ | HIS | |
| DELIVERY CARE | | | SEXUAL AND GENDER-BASED VIOLENCE (SGBV) | | |
| | INDICATOR | STANDARD | | INDICATOR | STANDARD |
| Proportion of births attended by skilled personnel | 98% | ≥ 90% | ✓ | Total number of reported rapes | 22 |
| Proportion of births conducted by caesarean section | 0% | 5 - 15% | ✗ | Proportion of eligible rape survivors provided with PEP within 72 hours | 93% |
| Proportion of newborn infants with low birth weight (<2500 gs) (weighed within 72 hrs) | 4% | < 15% | ✓ | Proportion of eligible rape survivors provided with ECP within 120 hours | 56% |
| Proportion of teenage pregnancies | 5% | | | SEXUALLY TRANSMITTED INFECTIONS (STIS) | |
| Still birth rate (/ 1000 total births / month) | 1 | | | Number of genital ulcer diseases | 40 |
| Number of maternal deaths | 0 | | | Number of Pelvic Inflammatory diseases | 206 |
| Proportion of maternal deaths investigated within 48 hours | | 100% | | | |

HIV/AIDS

PREVENTION & TREATMENT

Proportion of blood units screened for HIV

INDICATOR STANDARD

100%

Condom distribution rate

0.28 > 0.5

Proportion of TB patients tested for HIV

100%

PREVENTION & TREATMENT

Number of PoCs receiving ART

INDICATOR STANDARD

355

✘ Proportion of HIV positive mothers who swallowed ARV during delivery

100%

PMTCT coverage

99% 100%



Nutrition

NUTRITION GENERAL

Prevalence of global acute malnutrition (6-59 months)

INDICATOR STANDARD

Not collected

Prevalence of stunting (6-59 months)

Not collected

Prevalence of severe acute malnutrition (6 - 59 months)

Not collected

Prevalence of anaemia in children (6-59 months)

Not collected

Prevalence of anaemia in women of reproductive age (15-49 yrs)

Not collected

INFANT AND YOUNG CHILD FEEDING (IYCF)

Proportion of children 0-23 months who were put to the breast within one hour of birth

INDICATOR STANDARD

Not collected

Proportion of infants aged between 0-5 months who received only breast milk during the previous day

Not collected

IYCF programmes targeting pregnant and lactating women established or maintained?

Yes

MICRONUTRIENT DEFICIENCY

Percentage coverage of special nutrition product for prevention of undernutrition in young children (LNS/MNP/FBF)

INDICATOR STANDARD

96% > 70%



CMAM: SAM TREATMENT

Number of new severe acute admissions (6-59 months)

INDICATOR STANDARD

5

Recovery rate

63% > 75%

Default rate

13% < 0%

Death rate

0% < 10%

Referral rate

25%

MAM TREATMENT

Number of new moderate acute admissions (6-59 months)

INDICATOR STANDARD

1084

✘ Recovery rate

66% > 75%



✘ Default rate

21% < 15%



✔ Death rate

1% < 3%



Referral rate

10%

Water, Sanitation and Hygiene (WASH)

WATER

Average number of litres of potable water available per person per day

INDICATOR STANDARD

17 < 20

Proportion of households collecting >= 15 litres per person per day

64% > 95%

Number of persons of concern per water tap

285 < 80

Proportion of tests at chlorinated water collection points indicating a measurable chlorine residual (>= 0.1 mg/litre) and NTU <5

79% > 95%

Proportion of tests at unchlorinated water collection points showing 0 Faecal Coliforms/ 100 ml

90% > 95%

Proportion of households collecting drinking water from protected water sources only

47% > 95%

Proportion of households with sufficient daily water storage capacity

47% > 80%

WATER STAFFING

✘ Number of hygiene promoters

INDICATOR STANDARD

170 1 : < 20,000



SANITATION

Refugees per latrine/toilet

INDICATOR STANDARD

18 < 20



✘ Proportion of households with drop-hole latrine or drop-hole toilet

18%

Proportion of households report defecating in a toilet

42% > 85%



Proportion of communal latrines compliant with UNHCR standards (cleanable slabs, privacy & structural safety)

80% > 90%

