






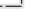


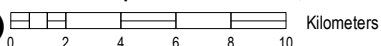


Satellite Detected Waters in Dombe Manica Province & Grudja Sofala Province, Mozambique, as of 19 March 2019

This map illustrates satellite-detected surface waters in Dombé and Grudja areas in Manica and Sofala provinces respectively as observed from a Sentinel-1 image acquired on 19 March 2019. Within the analysed extent of about 3,700 sq km, a total about 110 sq km of lands appear to be flooded as of 19 March 2019. This is a preliminary analysis and has not yet been validated in the field. Please send ground feedback to UNITAR - UNOSAT.

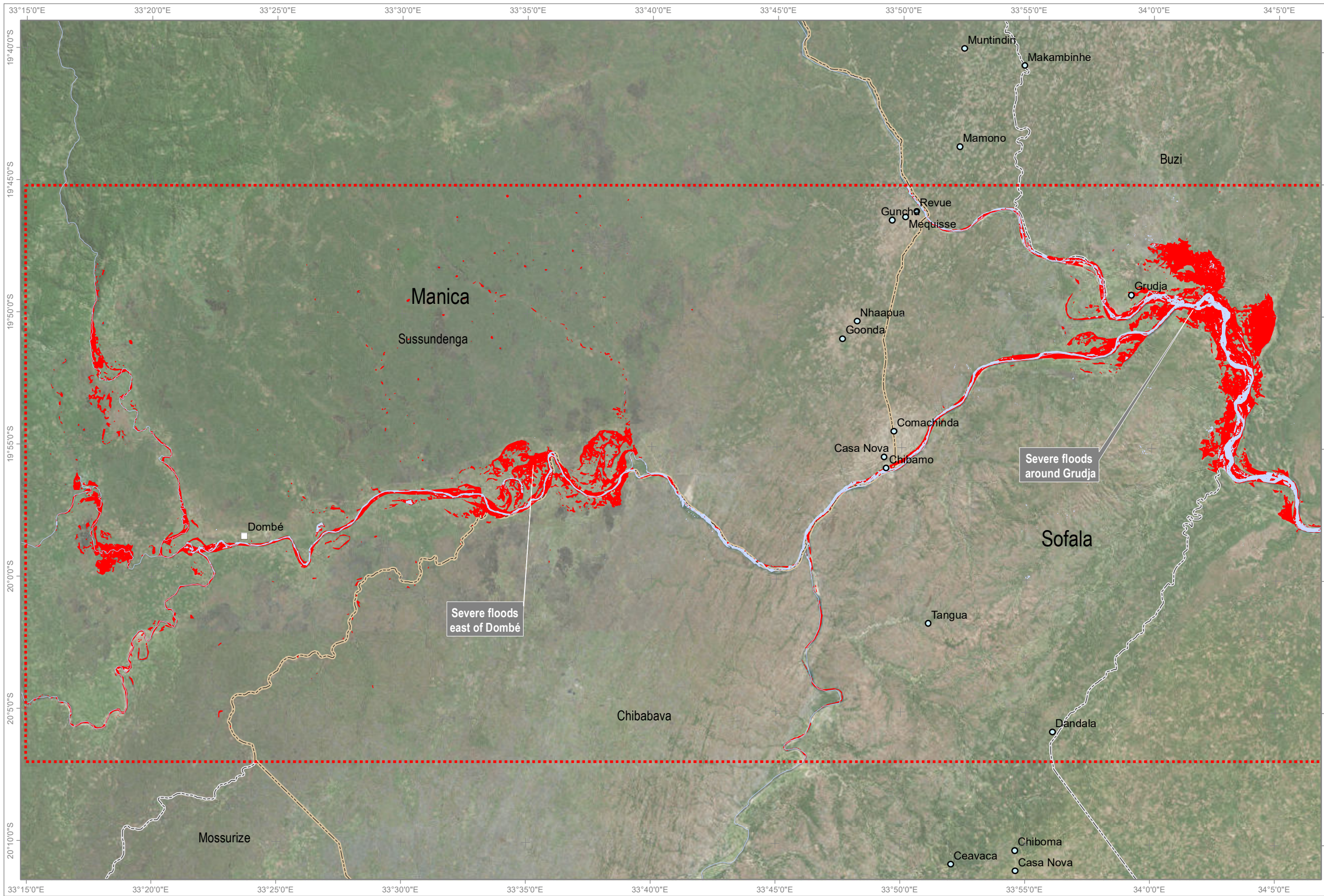
- Legend**
-  village
 -  City/Town
 -  Waterway
 -  Reference_Water
 -  Satellite detected waters (19 March 2019)
 -  Province boundary
 -  District boundary
 -  Analysis extent

Map Scale for A3: 1:275,000



Analysis conducted with ArcGIS v10.6.1

Coordinate System: WGS 1984 UTM Zone 36S
Projection: Transverse Mercator
Datum: WGS 1984
Units: Meter



Satellite data (post) : Sentinel-1
Imagery date: 19 March 2019
Resolution: 10 m
Copyright: Copernicus 2019/ESA
Source:ESA
Boundary data: OCHA ROSEA

Water body & waterway: COD
Analysis : UNITAR-UNOSAT
Analysis : UNITAR-UNOSAT
Production: UNITAR - UNOSAT



The depiction and use of boundaries, geographic names and related data shown here are not warranted to be error-free nor do they imply official endorsement or acceptance by the United Nations. UNOSAT is a program of the United Nations Institute for Training and Research (UNITAR), providing satellite imagery and related geographic information, research and analysis to UN humanitarian & development agencies & their implementing partners. This work by UNITAR-UNOSAT is licensed under a CC BY-NC 3.0.